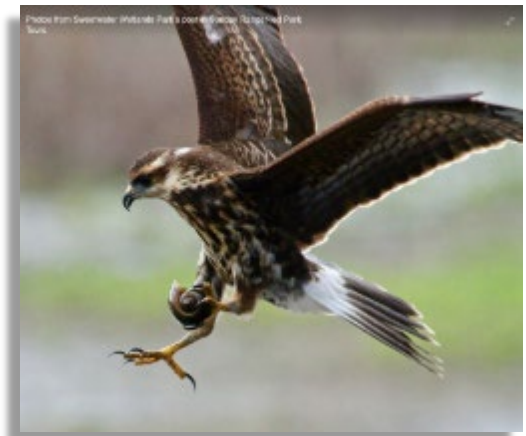


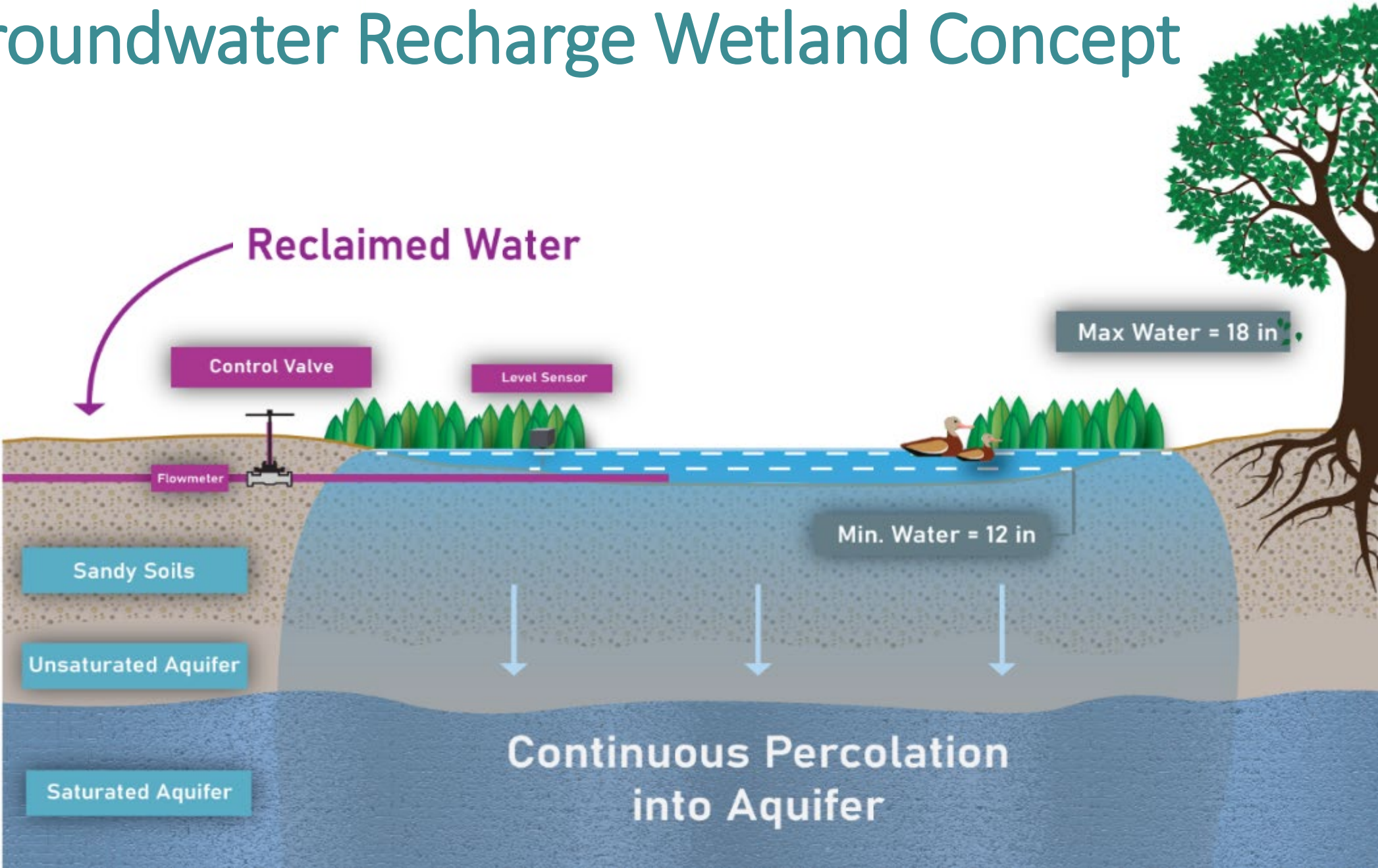
GRU Groundwater Recharge Wetlands



Sweetwater Wetlands Park



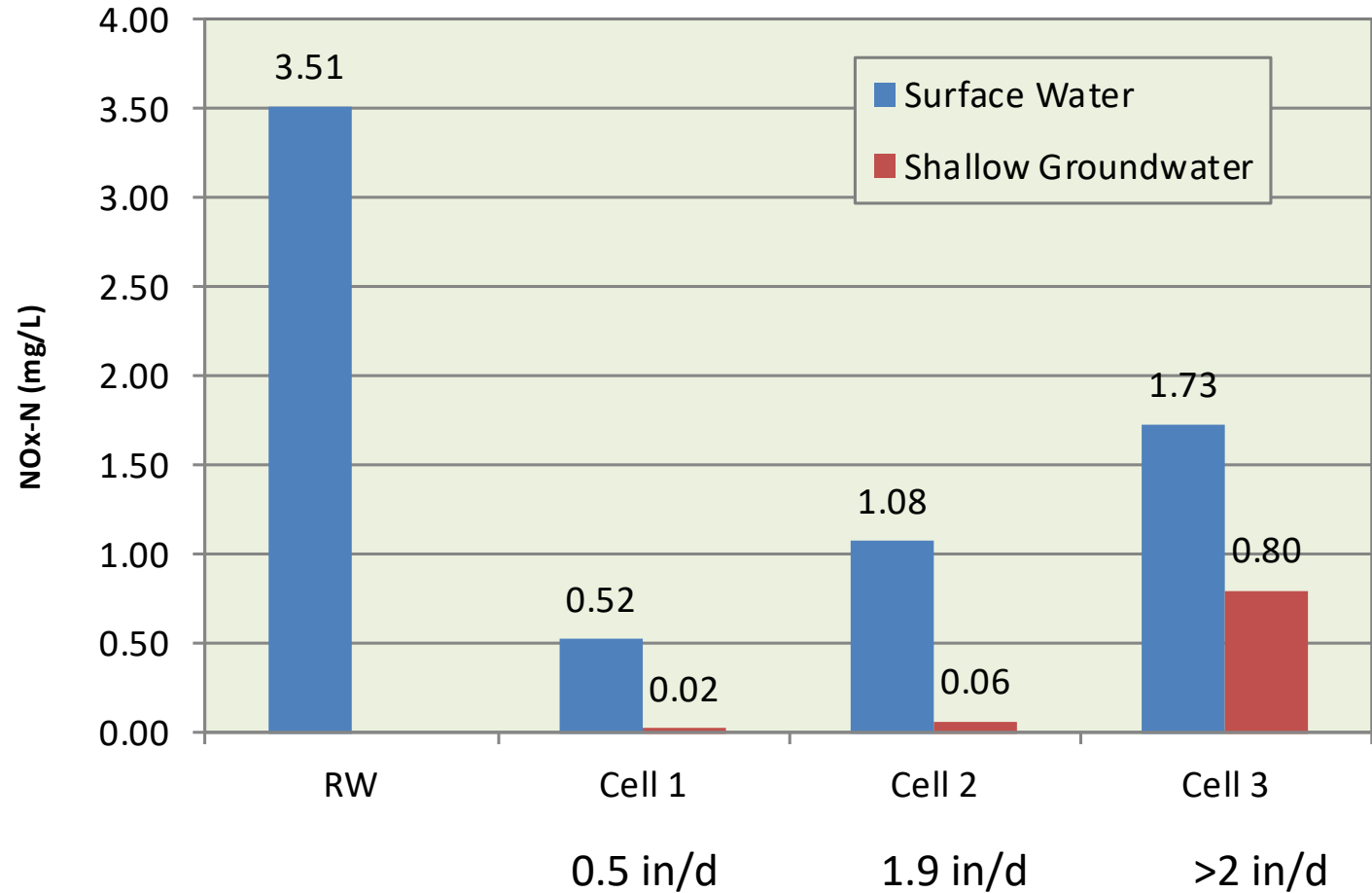
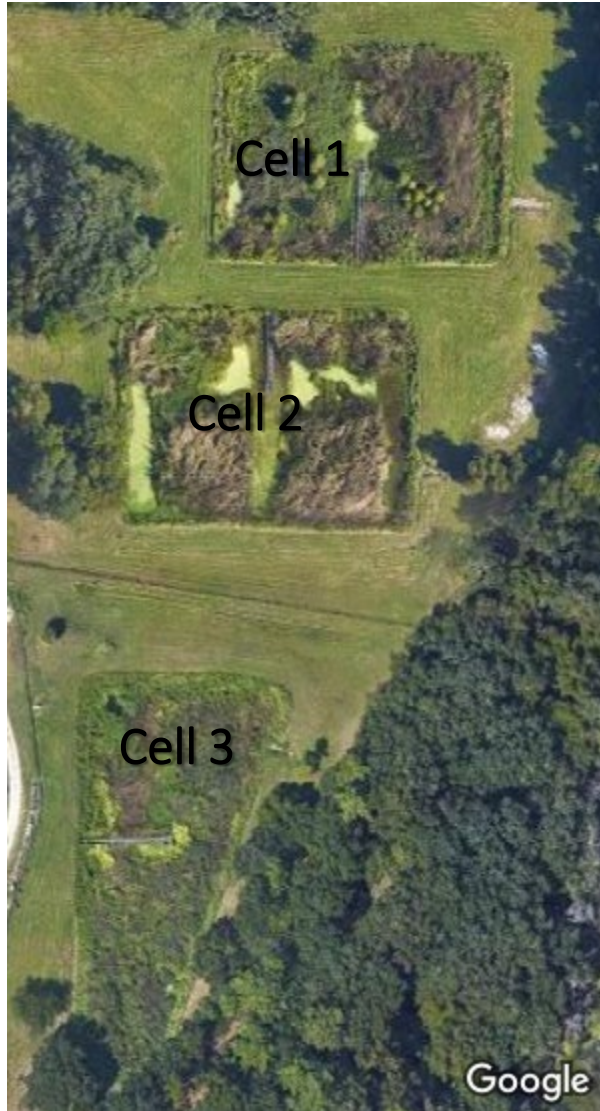
Groundwater Recharge Wetland Concept



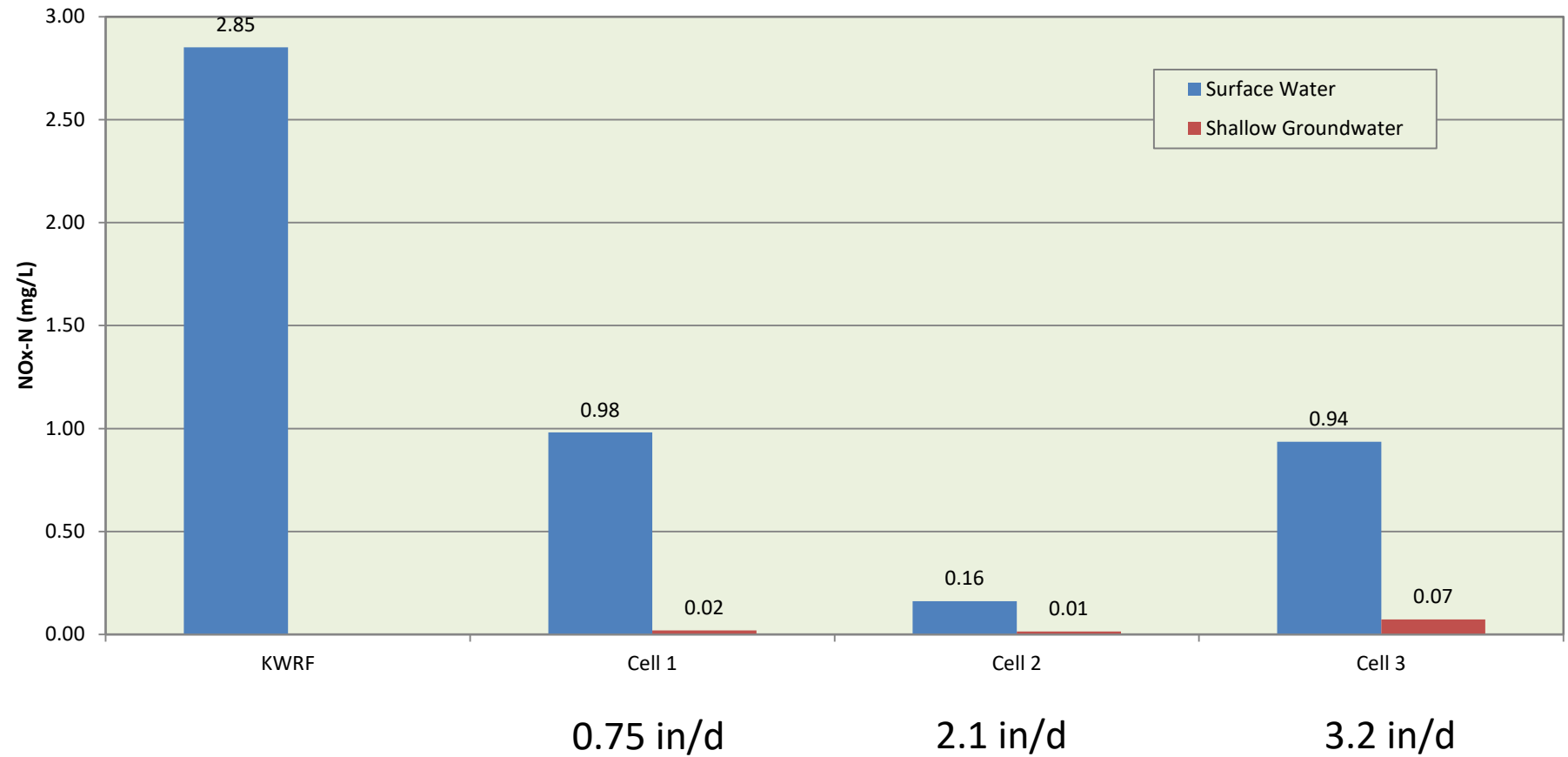
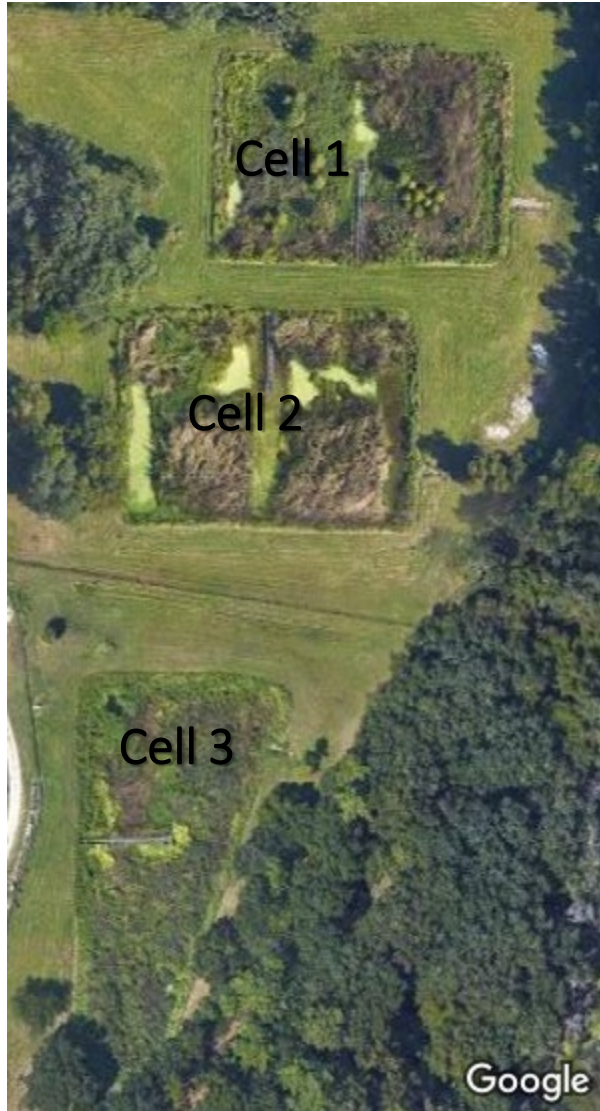
GRU Kanapaha Wetlands



Kanapaha WRF Wetlands – Nitrate (Phase 1)



Kanapaha WRF Wetlands – Nitrate (Phase 2)



Lake City Wetland



Ocala Wetland Recharge Park



Ocala Star Banner



Ocala Star Banner



**Gainesville Regional
Utilities, Groundwater
Recharge Wetland Park**

Project site

Diamond Sports Park
ACPS Property

SW 122ND ST

Oakmont
Elementary

OAKMONT

Wilds
Plantation

SW 24TH AVE

Haile
Plantation

SW 91ST ST

SW 75TH ST

Garrison
Way

KANAPAHA
WRF

KANAPAHA
BOTANICAL
GARDENS

Haile
Plantation

SW 44TH AVE

SW 104TH TER

SW 46TH BLVD

KANAPAHA
MIDDLE
SCHOOL

SW 63RD
BLVD

SW ARCHER RD
SW 75TH
ST



GRAPHIC LEGEND

Project Site

RCW Main

RCW Areas



NORTH

0 0.25 0.5 Miles



Project Benefits

- Recharges Floridan aquifer with 3 MGD (5 MGD build-out)
- Supports Santa Fe & Ichetucknee River flows
- Increases beneficial reuse
- Creates wetland habitat
- Alachua County plans to manage public access



Project Costs

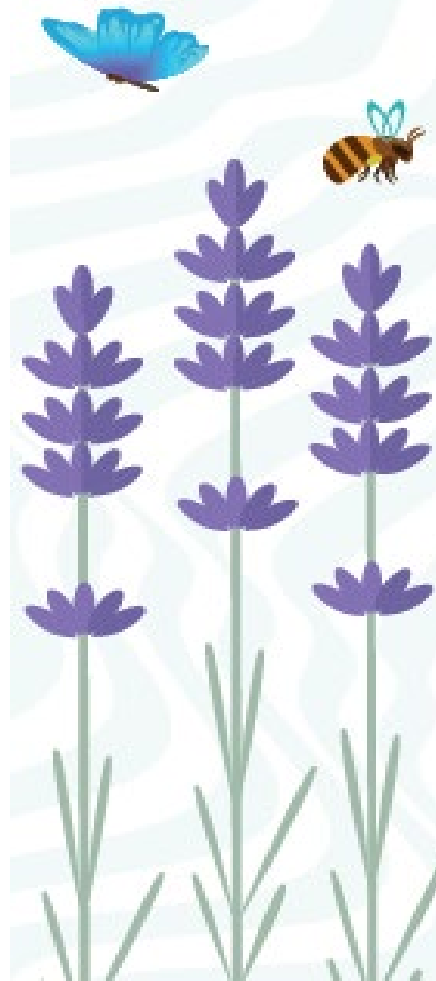
- Estimated \$10 to \$12 million
- FDEP/SRWMD partnering to provide cost-share
- GRU will seek additional funding opportunities



Proposed Schedule

Schedule	Calendar Year*
Purchase Property	2021 (complete)
Select Design-Build Team	2022
Design & Permitting	2022/2023
Wetland Construction	2023/2025
Start-up	2025-2026

* Schedule contingent upon funding



Artistic Rendering



Kristen Sealey, PE
sealeykm@gru.com

Kanapaha Middle School Wetland



Infiltration Rates
 Cell 4P = 2.75 in/d
 Cell 4W = 2.30 in/d
 Cell 5P = 1.84 in/d
 Cell 5W = 1.66 in/d