

McIntosh Wildlife Wetland Preserve

Preserving the Past - Embracing the Future



What is the McIntosh Wildlife Wetland Preserve?



1998: Purchased
Florida Communities Trust &
Hillsborough County
Environmental Land
Acquisition and Protection
Program
Owned by the City of Plant
City



2007: Nutrient improvement
project with SWFWMD

+/- 50 acres of site developed
as treatment wetlands to
treat stormwater from East
Canal.



2007: Preserve opened as
363-acre passive recreational
park.

Park amenities include
unimproved walking, hiking,
and mountain bike trails.

Existing Enhanced Stormwater Treatment Wetland

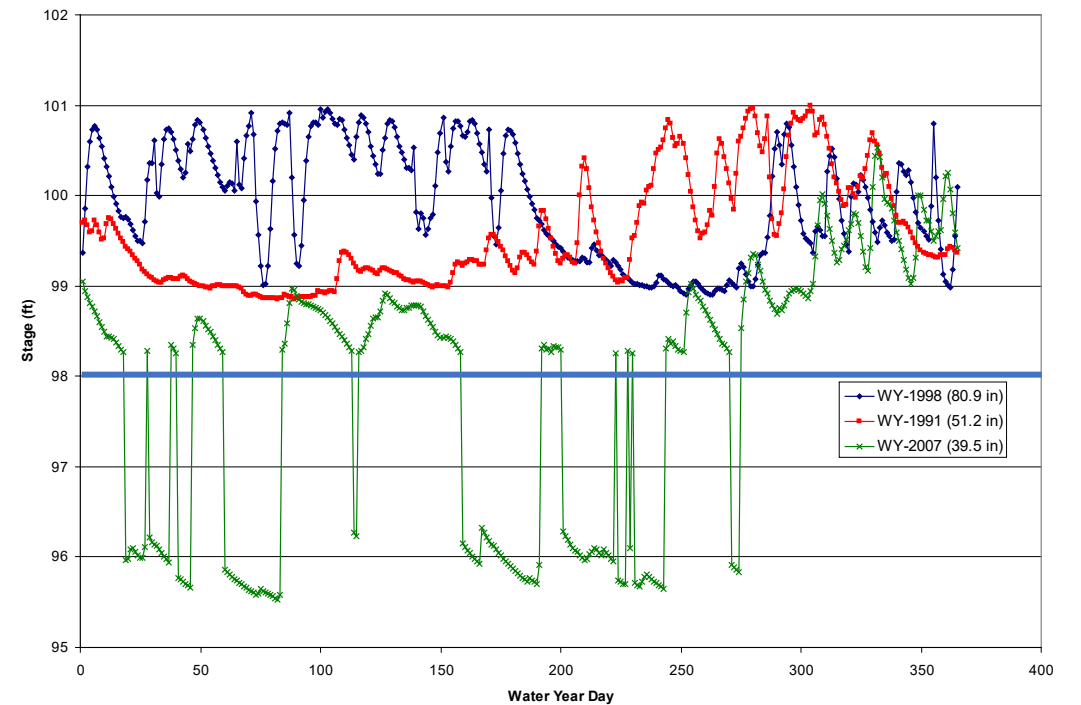
- 2007 Nutrient Improvement Project with SWFWMD can be improved:
 - Narrow intake diversion on East Canal
 - Existing system has challenging hydrology and requires a supplemental water source to maximize ecological functions
 - Existing alum system (nutrient control) is not functional
- Parks investment is currently under utilized due to overgrown habitat condition, lack of defined public access amenities, and limited parking.



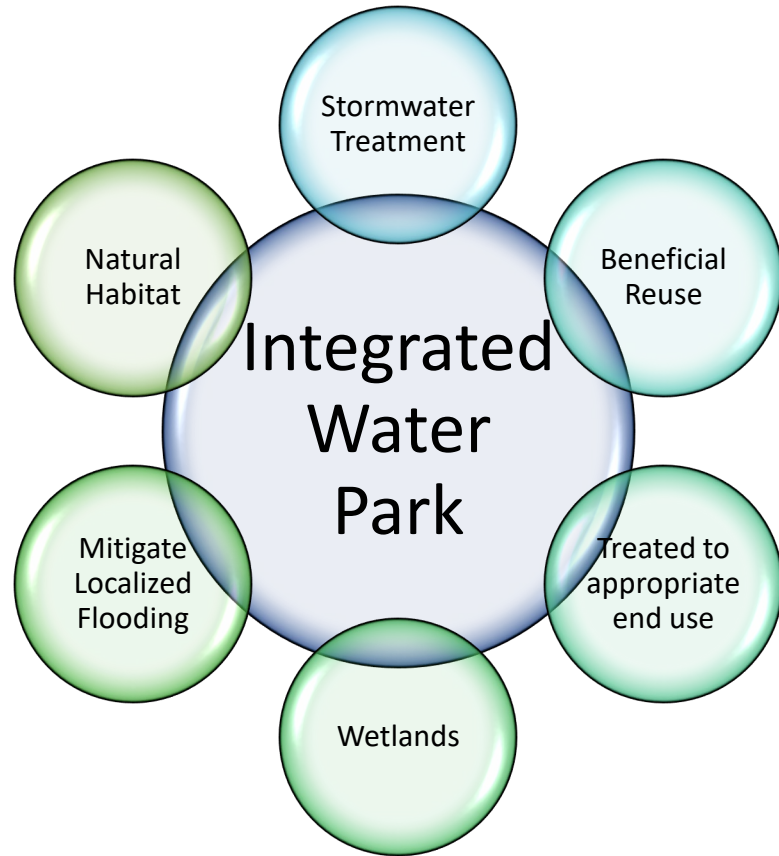
Water, water everywhere... or nowhere



- Existing stormwater treatment system suffers from feast-or-famine hydrologic regime
- Treatment wetlands that dry out can release previously trapped nutrients from oxidized sediments



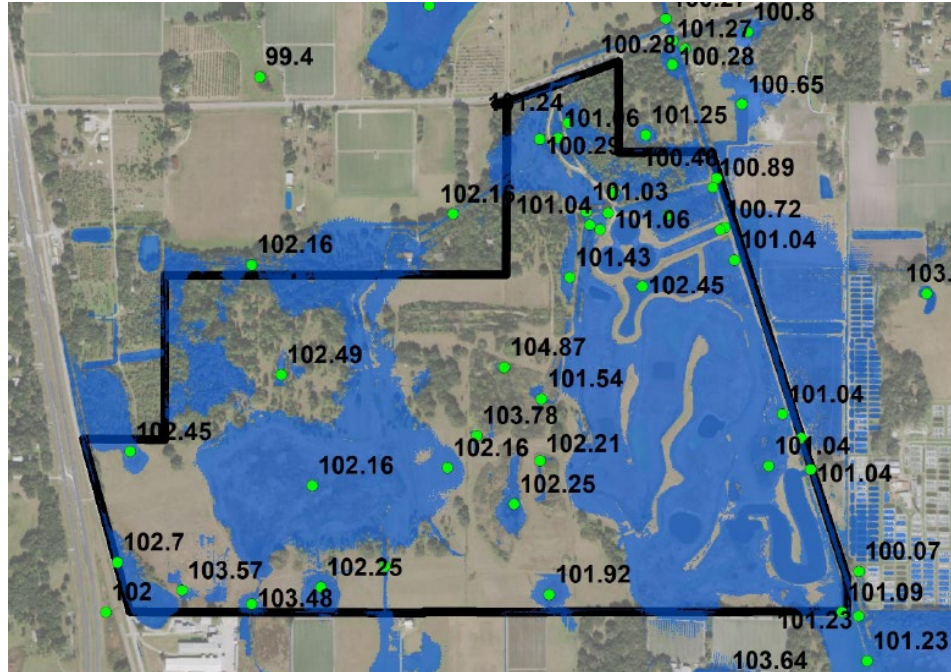
Integrated Water Park Concept



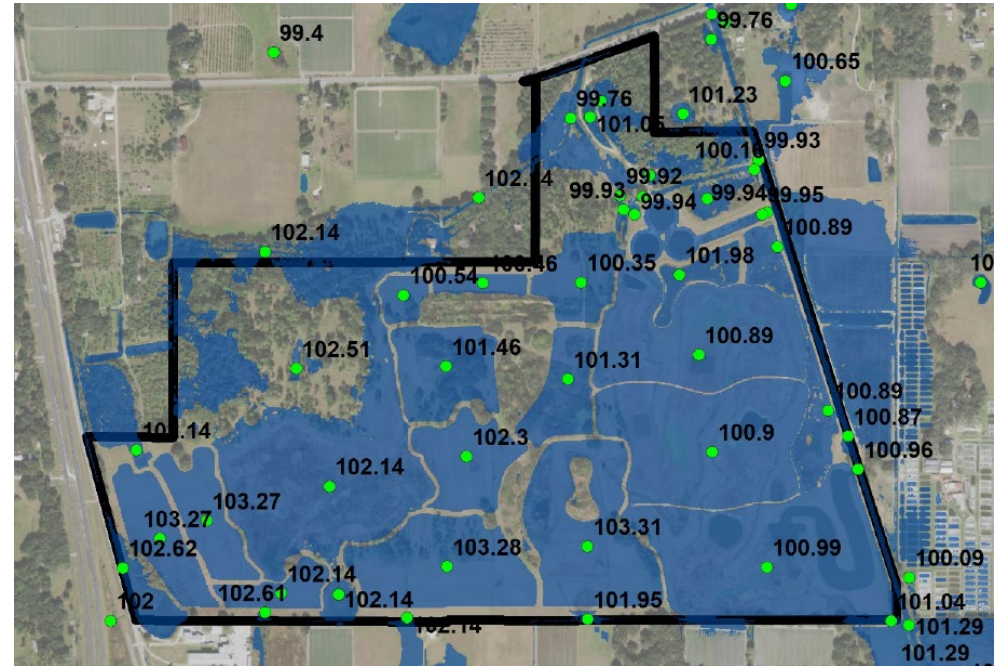
Development of an integrated water park to holistically manage all components of the water cycle as a finite and interconnected resource.

Mitigating Local Flooding

Project increases the capacity to store stormwater and reduce duration and extent of flooding events

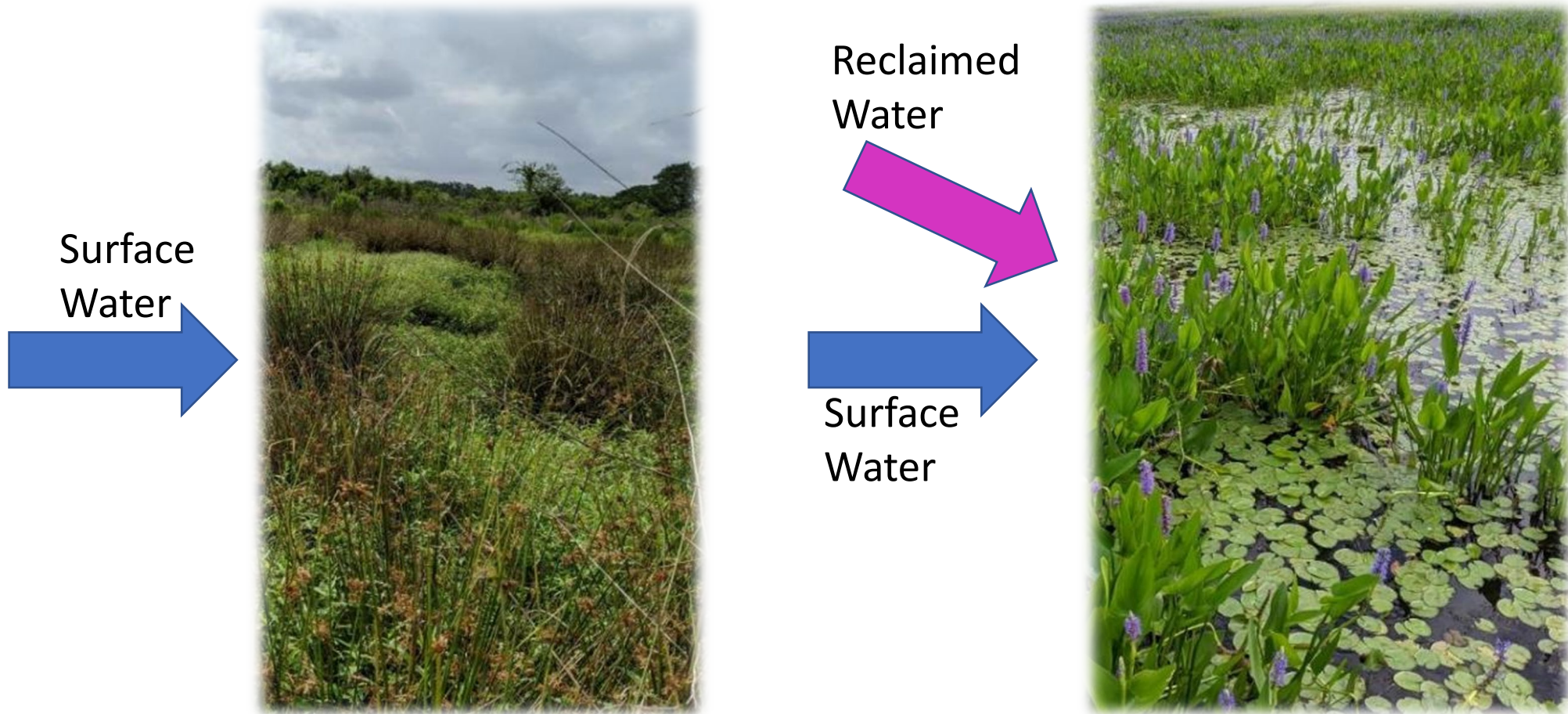


Current Condition



Proposed Condition

Hydrologic Improvement Facilitates Habitat Improvement

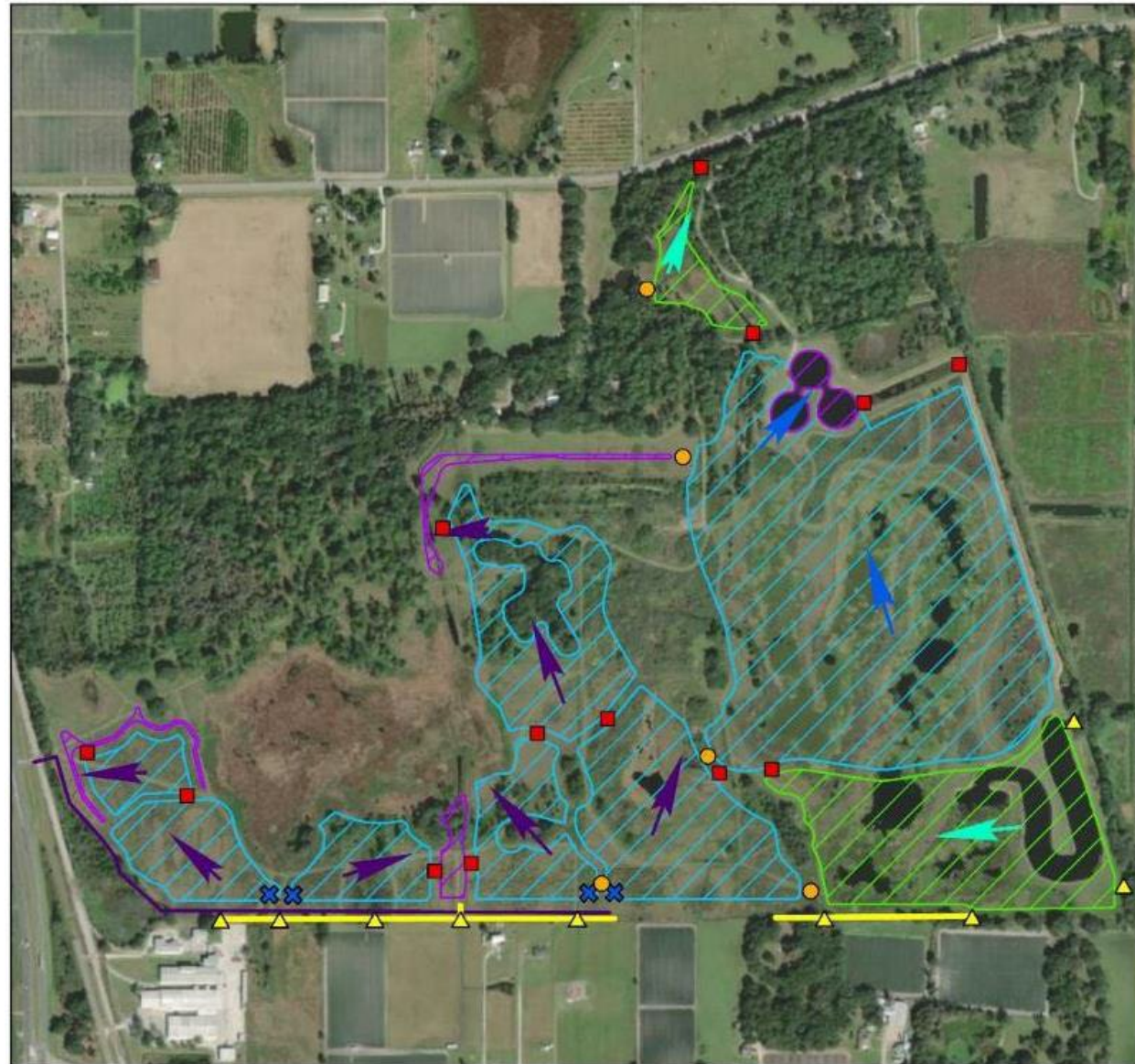


Improved Habitat Value by Design

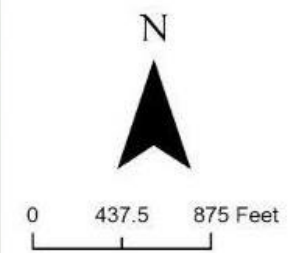


30% Design Features

- Avg Flows
 - SW = 7 MGD
 - RW = 2 MGD
- TN Removal
 - +7,000 lb/yr
- TP Removal
 - +2,000 lb/yr



- Legend**
- ✕ RCW Inflow
 - △ SW Inflow
 - FC Structure
 - Structure
 - RCW Pipe
 - SW Offsite
 - Comingled
 - Reclaimed
 - Surface Water
- Type
- ▨ Comingled
 - ▨ Stormwater
 - ▨ Percolation



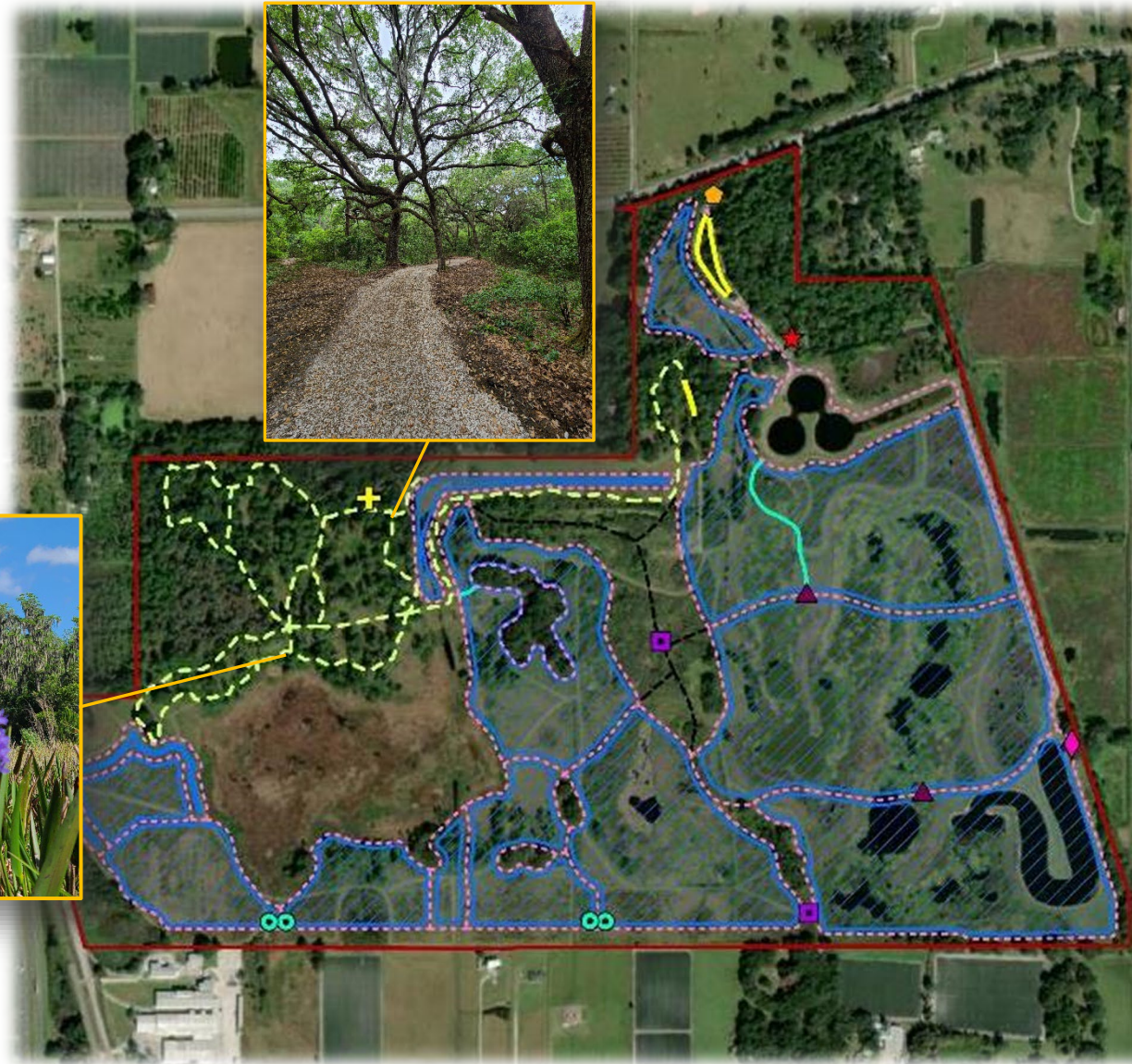
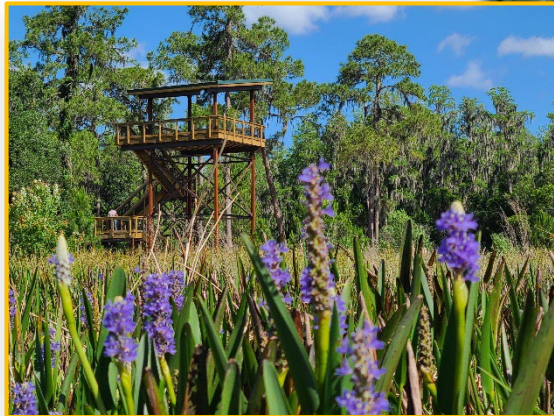
Expanded User Access to the Preserve



Project provides 2+ miles of pedestrian trail, an elevated wildlife observation tower, and parking improvements.



Family friendly trails will be wider and offer the shortest route to the observation tower.

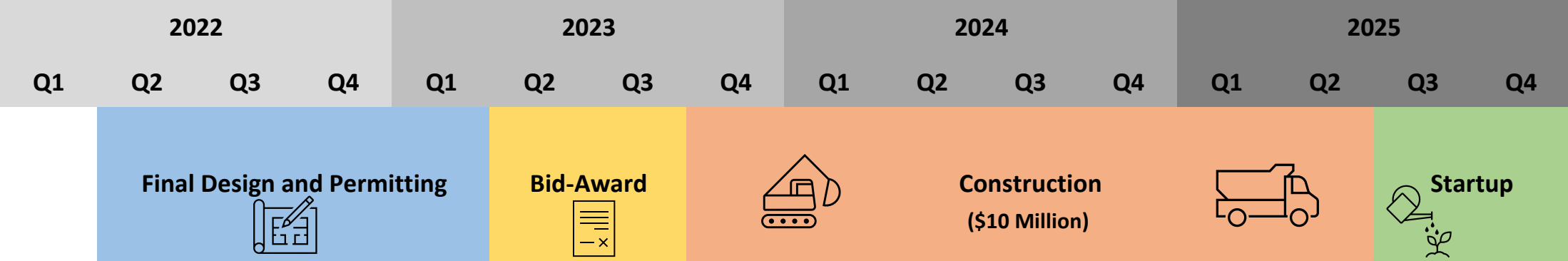


- Legend**
- Trail Phase 1
 - Parking Phase 1
 - Wetland Layout
 - Project Parcel
 - Conceptual Phase 2
 - Overlook Tower
 - Inflow Feature
 - Playground
 - Shade Structure
 - Tree Walk
 - Restroom
 - Bridge Retrofit
 - Boardwalk
 - Bridge
 - Overlook Trail
 - Parking
 - Trail



0 450 900 Feet

Project Timeline





Questions?

McIntosh Wildlife Wetland Preserve

Preserving the Past - Embracing the Future

The multiphase McIntosh Wildlife Wetland Preserve Project will include more than 100 acres of treatment wetlands and provide reclaimed water to protect those wetlands during dry-periods and drought. This project will improve water supply resiliency through recharge of the surficial and Upper Floridan aquifers.

McIntosh Wildlife Wetland Preserve embodies Plant City's commitment to preserve the past and protects and provides public access to the City's slice of natural Florida. The McIntosh Wetland Wildlife Preserve Project provides resiliency for our water supply and embodies our commitment to embrace the future.

Contact:

Chris Keller, PE, PWS – Wetland Solutions, Inc.

ckeller@wetlandsolutionsinc.com

