



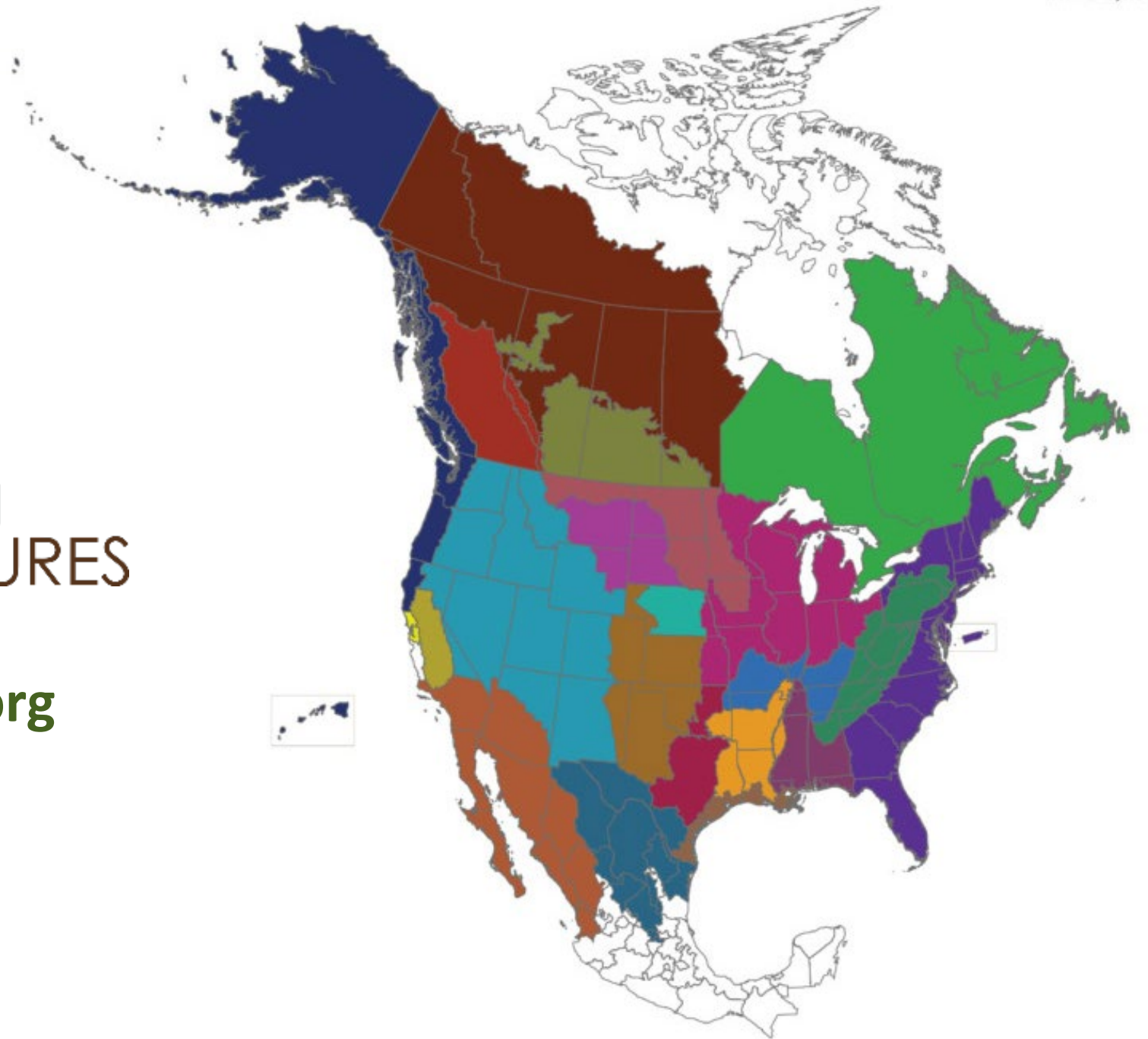
Photo: Aimee Roberson

Developing a Chihuahuan Desert Grasslands Conservation Investment Strategy



Migratory Bird
JOINT VENTURES

<http://mbjv.org>



Joint Venture Accomplishments

Since 1987, Joint Ventures have:


- Conserved 18.5 million acres of habitat
- Reversed the decline of wetland bird populations
- Leveraged U.S. congressional funds 35:1
- Partnered with more than 5,700 organizations
- Supported working lands, hunting and fishing, and birdwatching




RGJV Geographic Scope

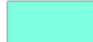


Rio Grande Joint Venture

 Rio Grande Joint Venture

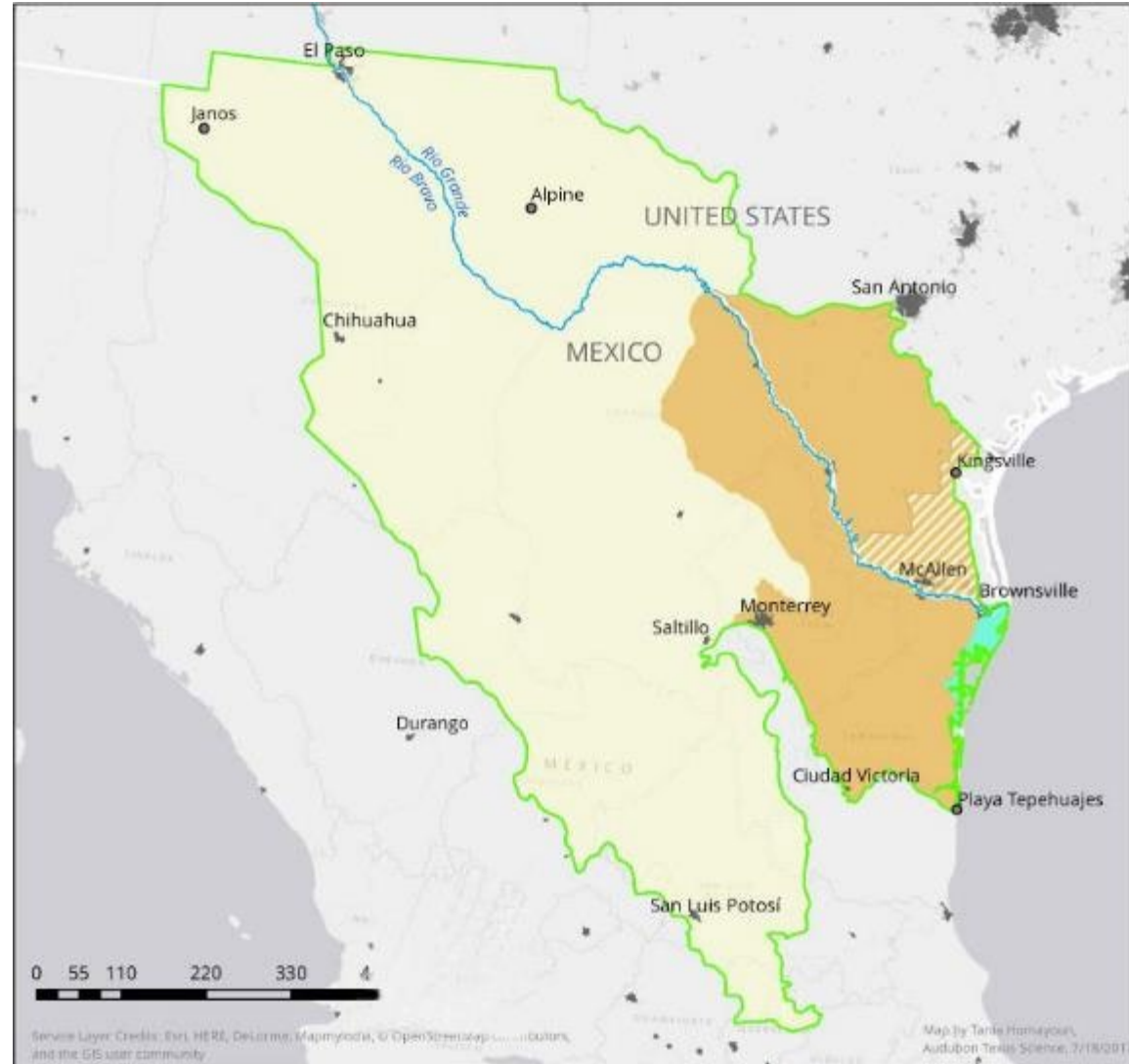
Bird Conservation Regions

 Chihuahuan Desert

 Gulf Coastal Prairie

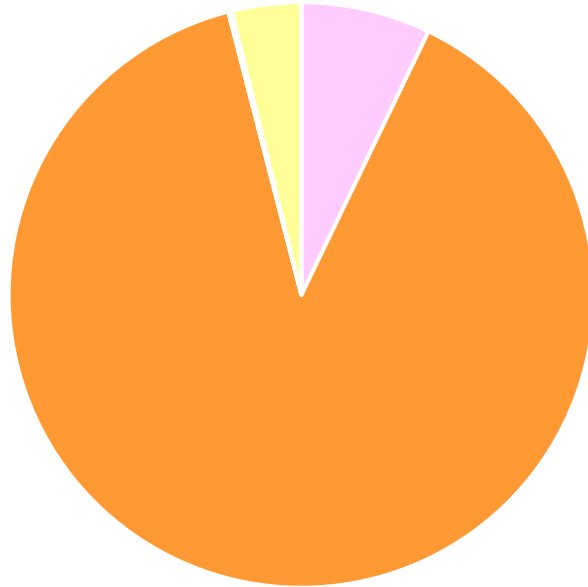
 Tamaulipan Brushlands

 Tamaulipan Brushlands - Shared Management*

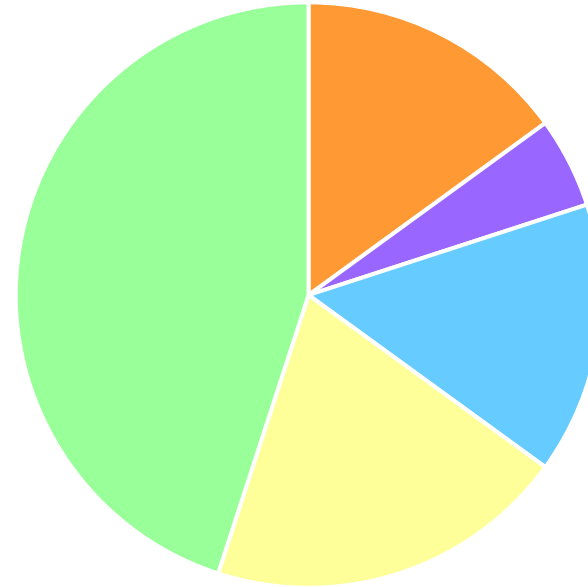


JV Structure: Strengths & Priorities Evolve

RGJV 2016
\$269K



RGJV 2024
\$500K



- Regional Support
- Communication
- Monitoring/Research

- Coordination
- Planning
- Conservation & habitat delivery



Management Board



The mission of the Río Grande Joint Venture is to conserve birds and their habitats across the JV geography in the U.S. and Mexico.



Priority Bird Habitats

CHIHUAHUAN DESERT

- Grasslands
- Riparian corridors and wetlands

TAMAULIPAN BRUSHLANDS

- Grassland-dominated habitats
- Riparian corridors

GULF COAST PRAIRIE – MEXICO

- Laguna Madre
- Riparian corridors
- Coastal habitats



Priority Species



Conservation Investment Strategies

- Will be completed for each habitat area, starting with grasslands
- Connect to other planning efforts for the central grasslands of North America (full annual life cycle)

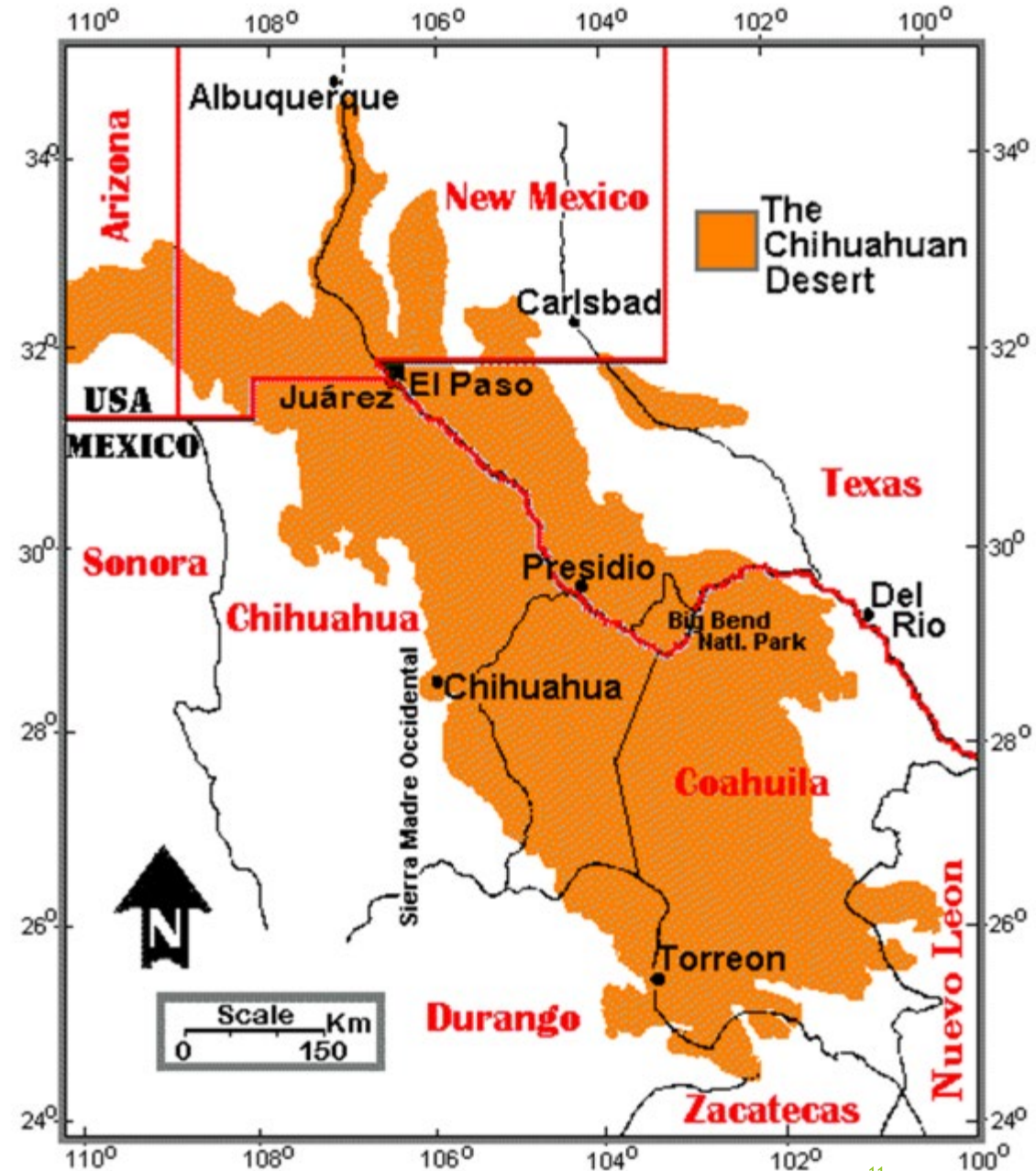


Chihuahuan Desert Conservation Investment Strategy

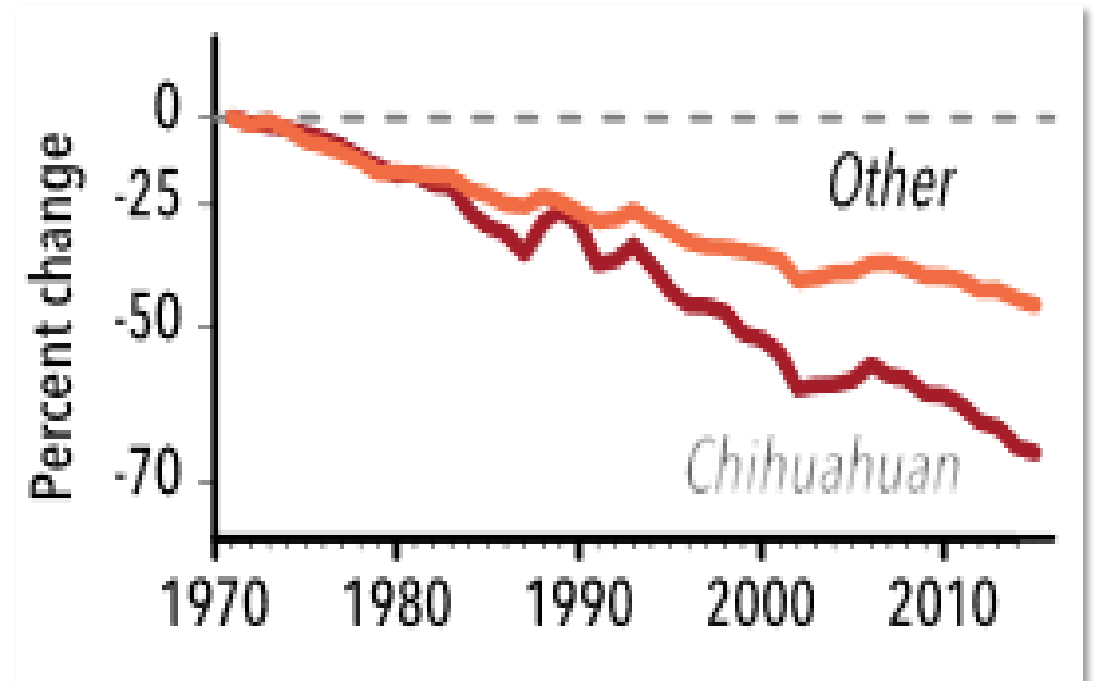
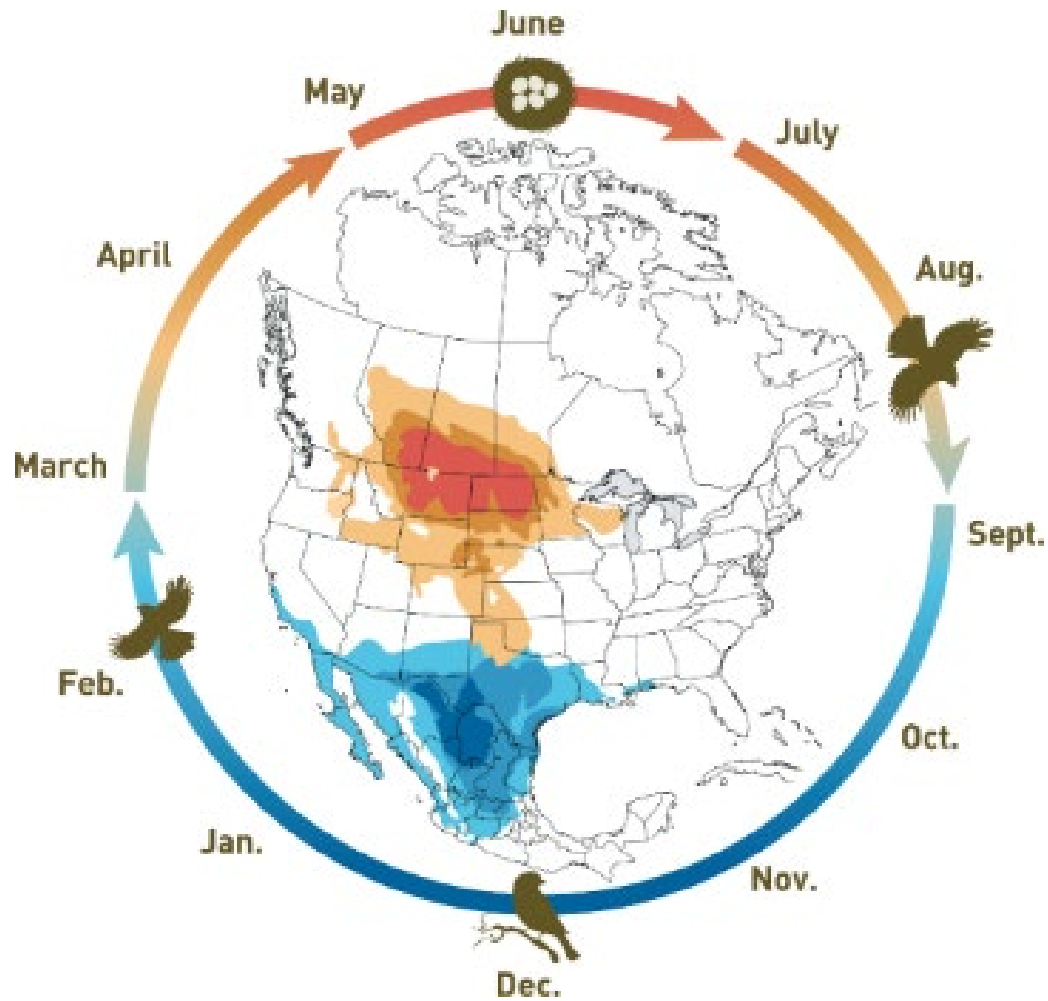
Largest desert in North America

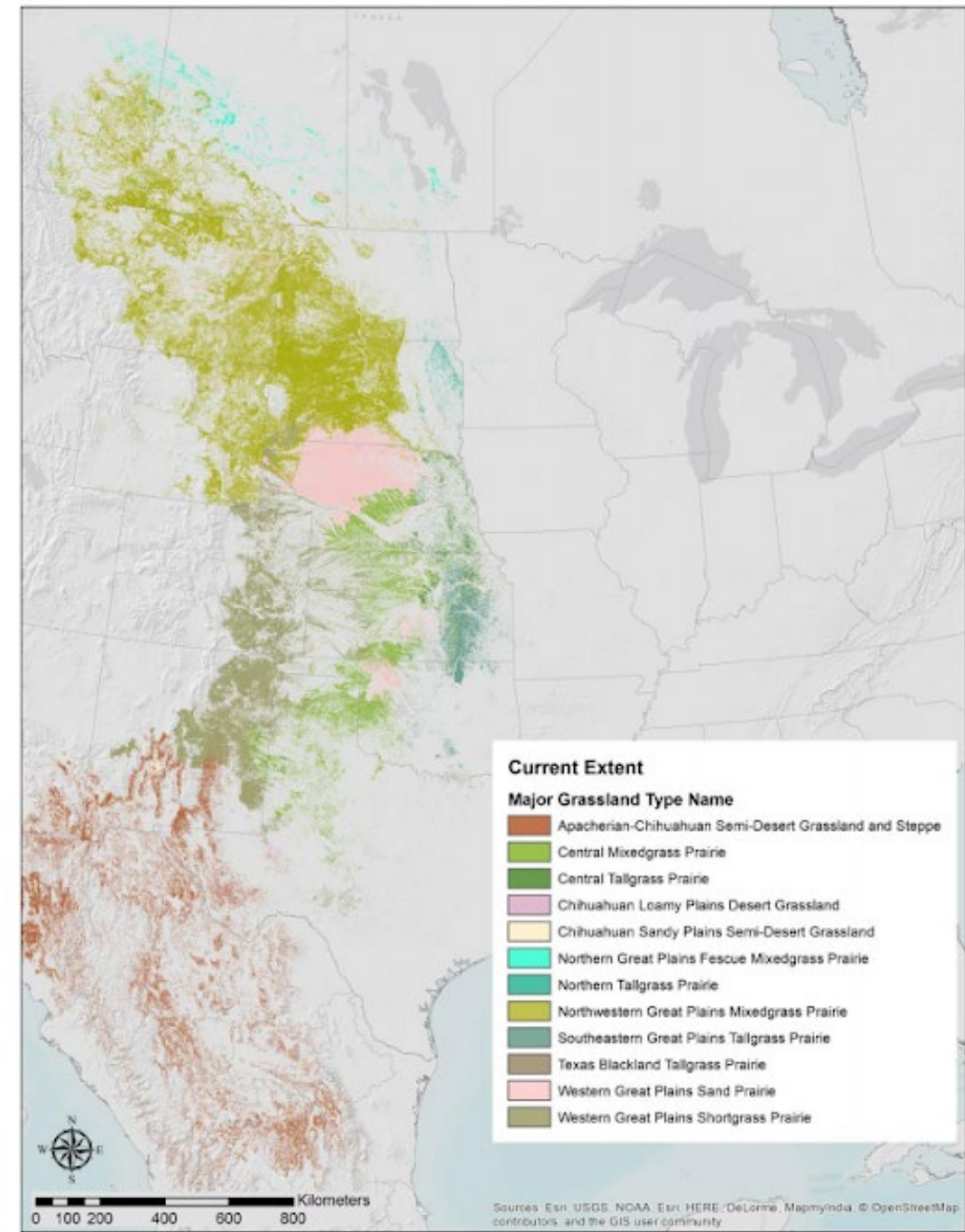
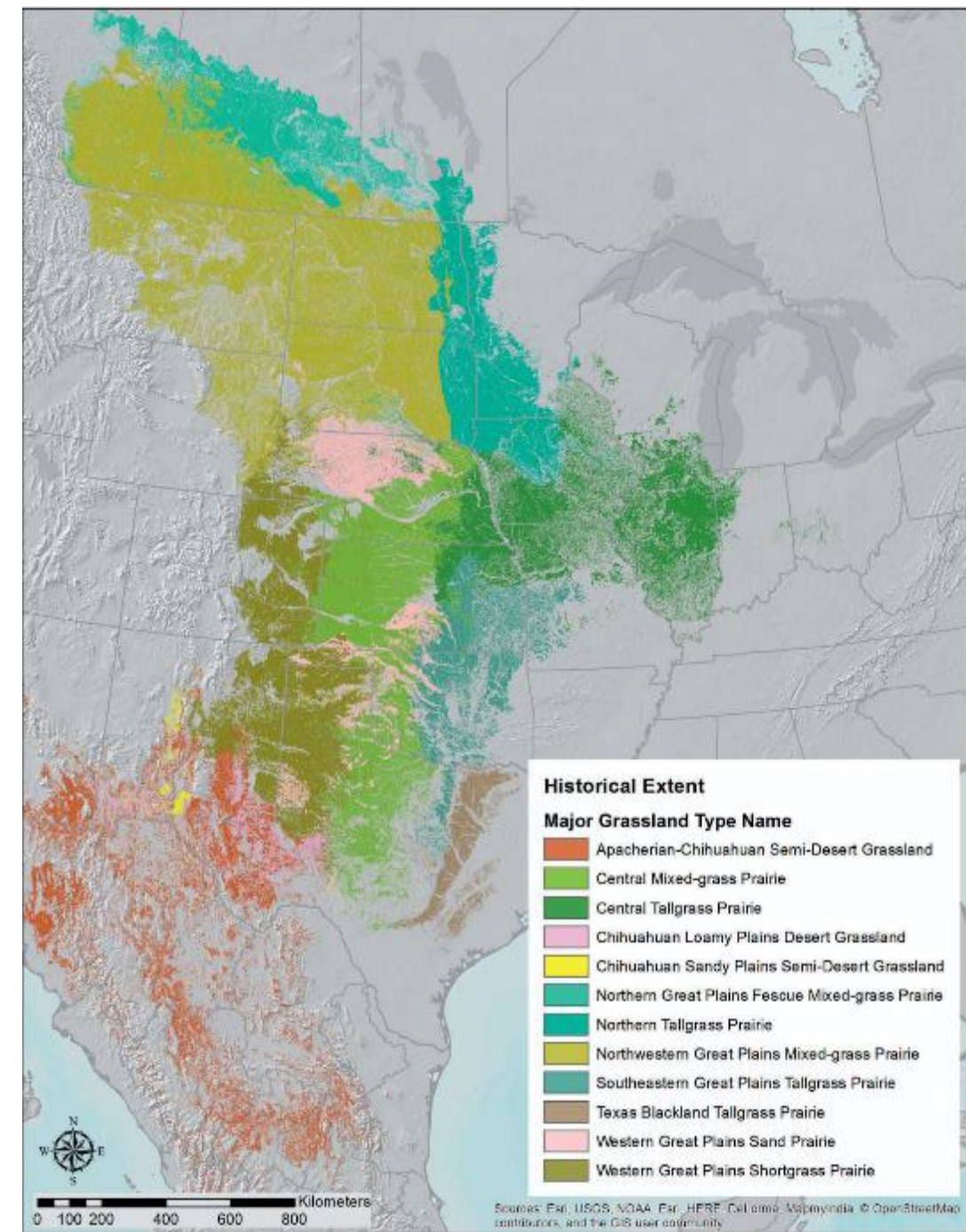
90% of its territory is in Mexico

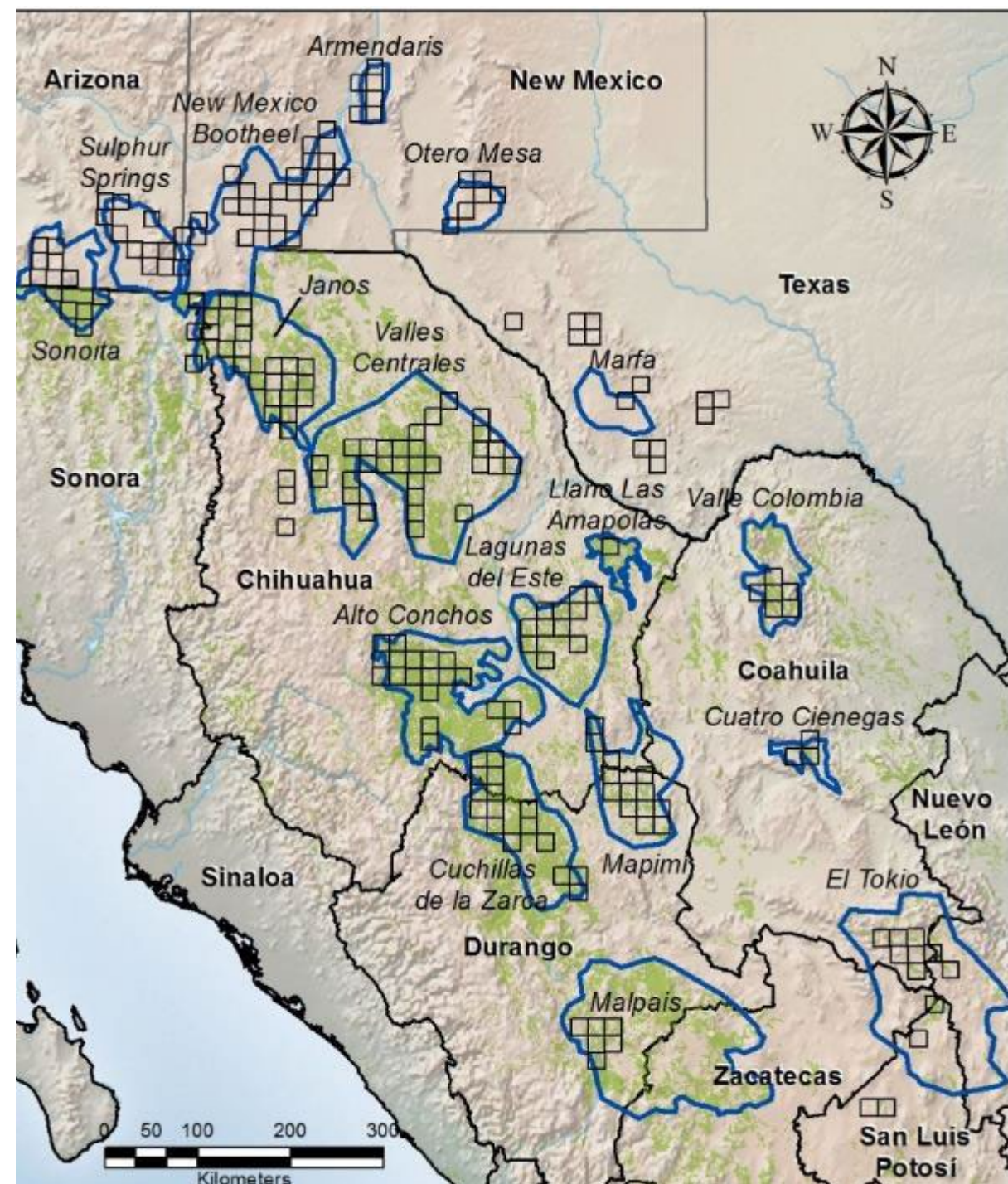
Almost 250,000 square miles



Why a Conservation Investment Strategy for the Chihuahuan Desert Grasslands?





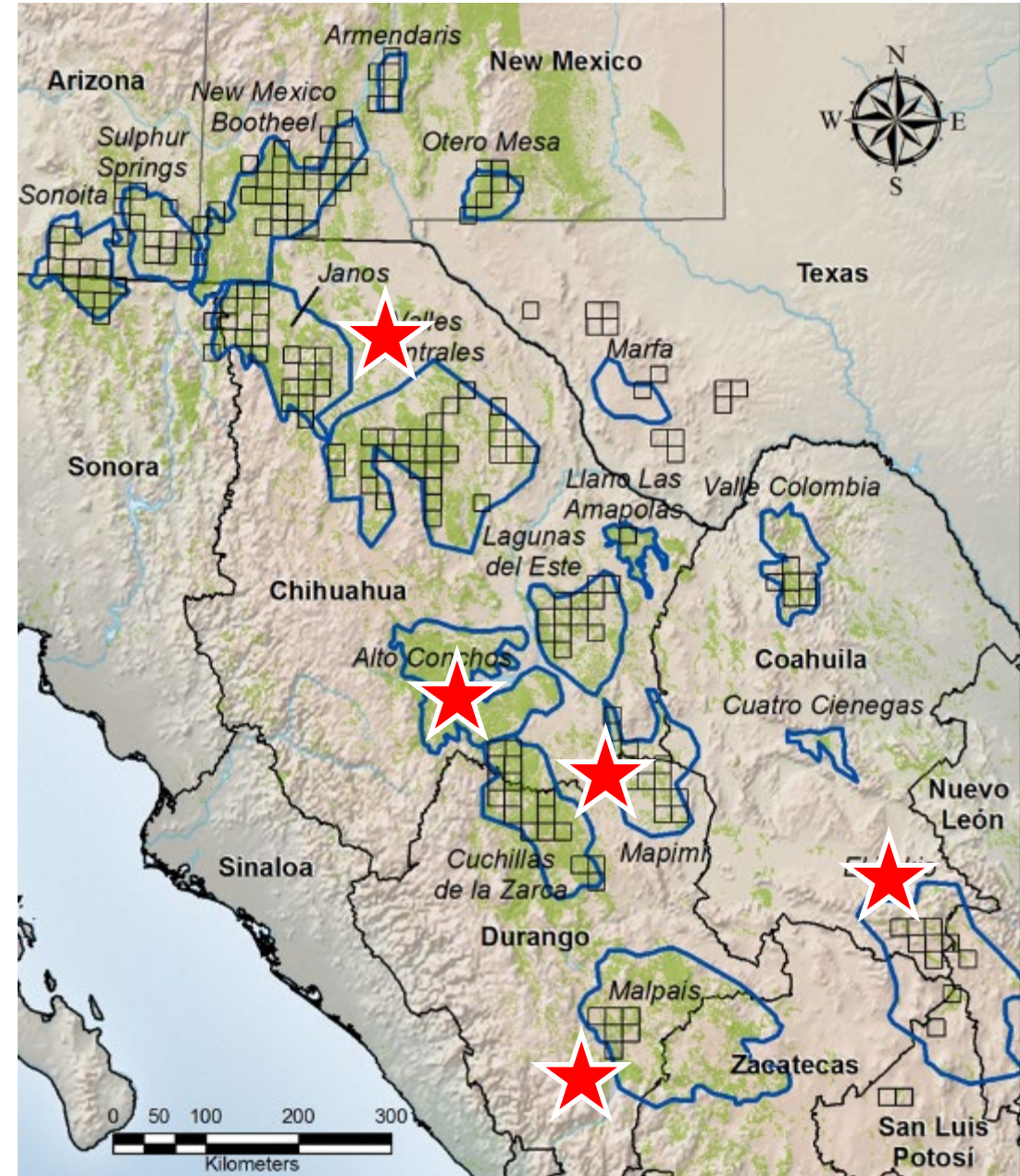


Grassland Priority Conservation Areas (GPCAs) in the Chihuahuan Desert

Established by the Commission for Environmental Cooperation in collaboration with the Nature Conservancy in 2005 and enhanced with winter grassland bird sampling blocks in 2011 from Bird Conservancy of the Rockies.

Stakeholder Workshops & Timeline

Location	Date	GPCAs
Alpine, TX	9.11.2019	Marfa
Tucson, AZ	10.17.2019	AZ GPCAs
Santa Fe, NM	10.29.2019	NM GPCAs
Durango, DG	8.15.2022	Cuchillas, Malpais
N Casas Grandes, CH	1.19.2023	Janos, Vce
Parral, CH	1.23.2023	AC, LE, Amapolas
Saltillo, COAH	2.28.2023	El Tokio, CC, Vco
Ejido La Flor, DG	3.27.2023	Mapimi





Nearly 200 participants provided feedback during 2-day workshops in Mexico



CAMBIO CLIMÁTICO

<p>De quita</p> <p>Diminución de agua</p> <p>Cambio climático</p> <p>Temperaturas extremas</p> <p>Cambios en los Regímenes de lluvia</p> <p>Aguas</p> <p>EROSIÓN EN ESPACIOS NATURALES ENLARGA A LOS TIEMPOS DE RECARGA</p>	<p>ESTRATEGIAS DE PASTOREO, RESERVAS DE SOFISTE</p> <p>REVLINTE Y OBRAS DE RESTAURACIÓN DE SUELO</p> <p>CURSOS DE CAPACITACIÓN A PRODUCTORES, Casos de agua de lluvia, SED MITIGACIÓN (ALMACENAMIENTO Y DISTRIBUCIÓN DE AGUA)</p> <p>PROGRAMA DE SURELEVACIÓN CORRECTA PARA SAUADO Y FAUNA</p> <p>LEGISLACION PUBLICAS PARA REDUCIR EMISIONES DE CARBONO</p> <p>CONCIENCIAR Y SENSIBILIZAR ESPECIES ADAPTADAS AL CAMBIO CLIMÁTICO</p> <p>PROMOVER EL MERCADO DE BIENES DE CARBONO</p> <p>PROTEGER LAS ZONAS ARTIFICIALES, SOBORNOS PARA MAANA</p> <p>CORRIDORES PARA FACILITAR LA MIGRACION DE ESPECIES EN GRADIENTES ALTITUDINALES.</p> <p>Introducción de especies en la zona silvestre</p>
---	---

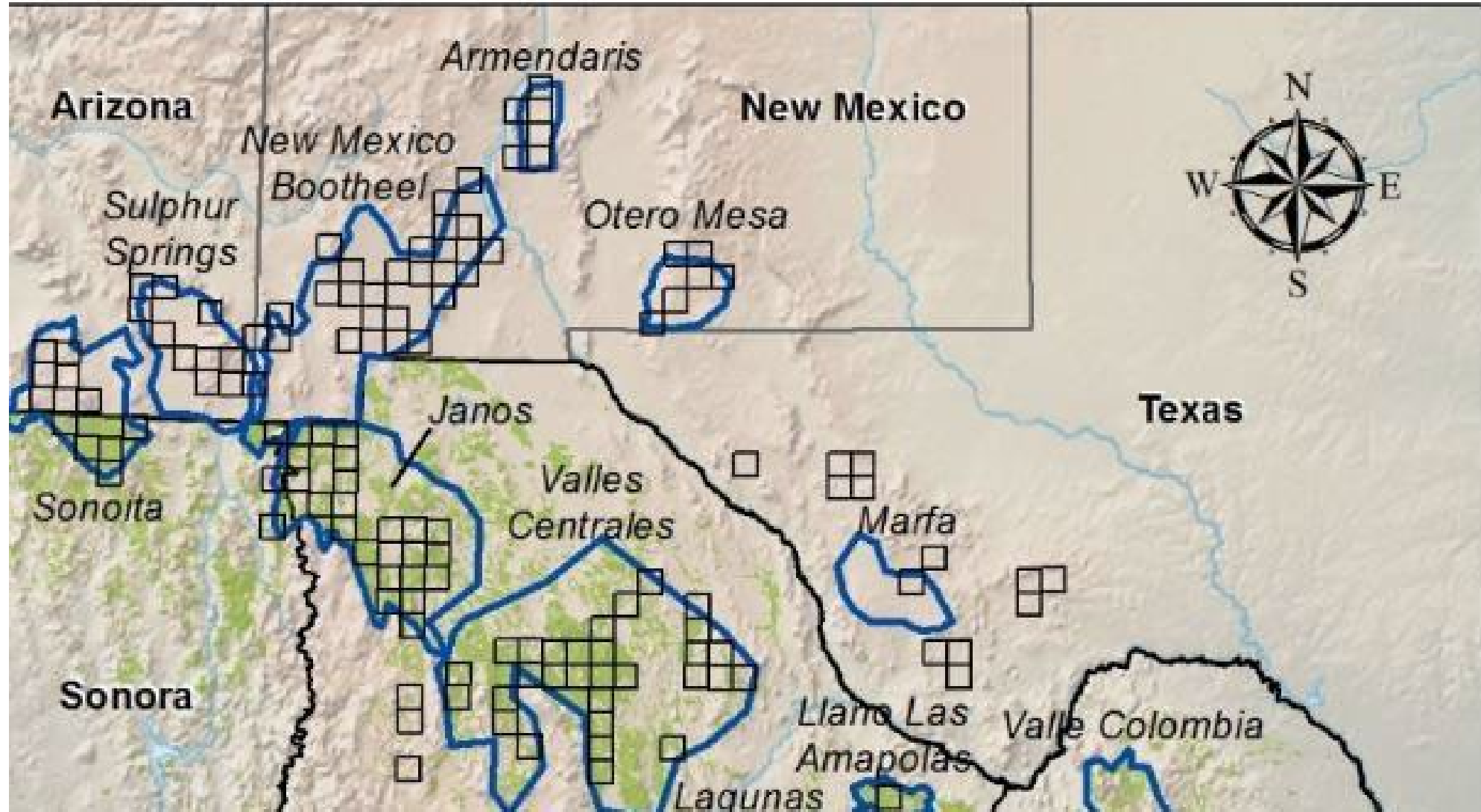
Conservación	Amenazas	Factores Contribuyentes
✓ PASTIZAL (Ecosistema) NATIVO	→ SOBREPASTOREO	→ FALTA DE INFORMACIÓN
✓ FAUNA SILVESTRE	→ CACERIA FORTIVA	→ COSTUMBRES TRADICIONALES
✓ SUELO	→ SIEMBRAS PASTOS EXÓTICOS	→ FALTA TIRAJA Y EXTENSION
✓ GANADO	→ USO INAD. MEDIC. VETER.	→ FALTA DE AJUST. MARCO LEGAL PASTORILES
✓ AVES DE PASTIZAL PRIORITARIAS	→ FALTA ACCESO A LA INFOB.	→ FALTA DE VINCULACION PAST.
✓ AGUA (SUPERF. Y SUBTERR.)	→ SOBREEXPLOTACIÓN AGUA	→ TENENCIA DE LA TIERRA
	→ LEGALIDAD ADMIN. AGUA	→ FALTA DE INVER. BIEN DA Y ADMIN.
	→ INVASION DE ARBUSTIV.	→ CORRUPCIÓN
	→ CAMBIO DE USO DEL SUELO	→ MALAS PRACTICAS PASTORES
	→ FRAGMENTACIÓN HAB.	
	→ CAMBIO CLIMÁTICO	
	→ ENFERM. EXÓTICAS Y PARAS.	

David Borne
Arvind Panjabi
Jesús Ochoa
Federico Vidaneal
Alan Álvarez
Carlos Morales

Conservación	Amenazas	Factores Contribuyentes
✓ PASTIZAL (Ecosistema) NATIVO	→ MAIAS PRACTICAS GANADERAS. *	→ ASESORIAS (FALTA)
✓ FAUNA SILVESTRE	→ CAMBIO CLIMÁTICO ***	→ SOBRE EXPLOTACIÓN DE REC. NAT.
✓ SUELO	→ INCENDIOS NATURALES **	→ MALA INFORMACIÓN
✓ GANADO	→ CIERTOS GRUPOS AMBIENTALISTAS	→ CAMBIO CLIMÁTICO
✓ AVES DE PASTIZAL PRIORITARIAS	→ SEQUIA ATÍPICA *	
✓ AGUA (SUPERFICIAL Y SUBTERR.)	→ **	
	→ SOBRE EXPLOTACIÓN	→ AGRICULTURA INDUSTRIAL
	→ * SEQUIA	→ CRECIMIENTO DEMOGRÁFICO
	→ CONTAMINACIÓN DE MANTOS ACUIFEROS.	→ LA ACTV. INDUSTRIAL.
	→ SOBRECARGA ANIMAL *	→ TENENCIA DE LA TIERRA.
	→ ***	
	→ AGRICULTURA	→ DEMANDA ALIMENTICIA
	→ FALTA DE COBERTURA VEGETAL	→ FALTA DE CONCIENCIA AMBIENTAL
	→ CAZA FORTIVA	
	→ ENFERMEDADES	
	→ DISMINUCIÓN DE SU HABITAT	

LUIS PACHECO
ADRIAN ARRAS
NANI BUWANDA
JOSE ALVARO ST
OSCAR STZ
RAFAEL ARZN

Revisiting US GPCAs



Key take-aways from the meeting results

- Create a culture of sustainability (education, dissemination, training)
- Implementation of best practices (grazing management, peer-to-peer)
- Develop economic incentives (certification processes, grass banks, carbon markets)
- Planning, Policy and Governance (institute native grass planting programs, grassland protection policies)
- Conservation (protection, restoration, management)
- Research, monitoring and transfer of knowledge (measure grassland and forage production, conduct flora and fauna surveys)

Key take-aways from the process

- Taking much longer than we thought
- Some of the meeting results difficult to categorize/interpret
- How to approach writing the final document
- Lots of great feedback and participation/interest from partners
- Built relationships
- Document is much-anticipated and should help fund-raise, but is not really the end goal



Next Steps

- Partners in NM and AZ will help shepherd the document to completion
- In the meantime, start developing outreach tools/briefs/talking points
- Alignment with broader grassland conservation efforts that are taking place across the biome





Karen (Mickey) Chapman
RGJV Coordinator

kchapman@abcbirds.org

(432) 349-3375

<http://rgjv.org>

