

Overview of the Bureau of Reclamation's Management of the Rio Grande

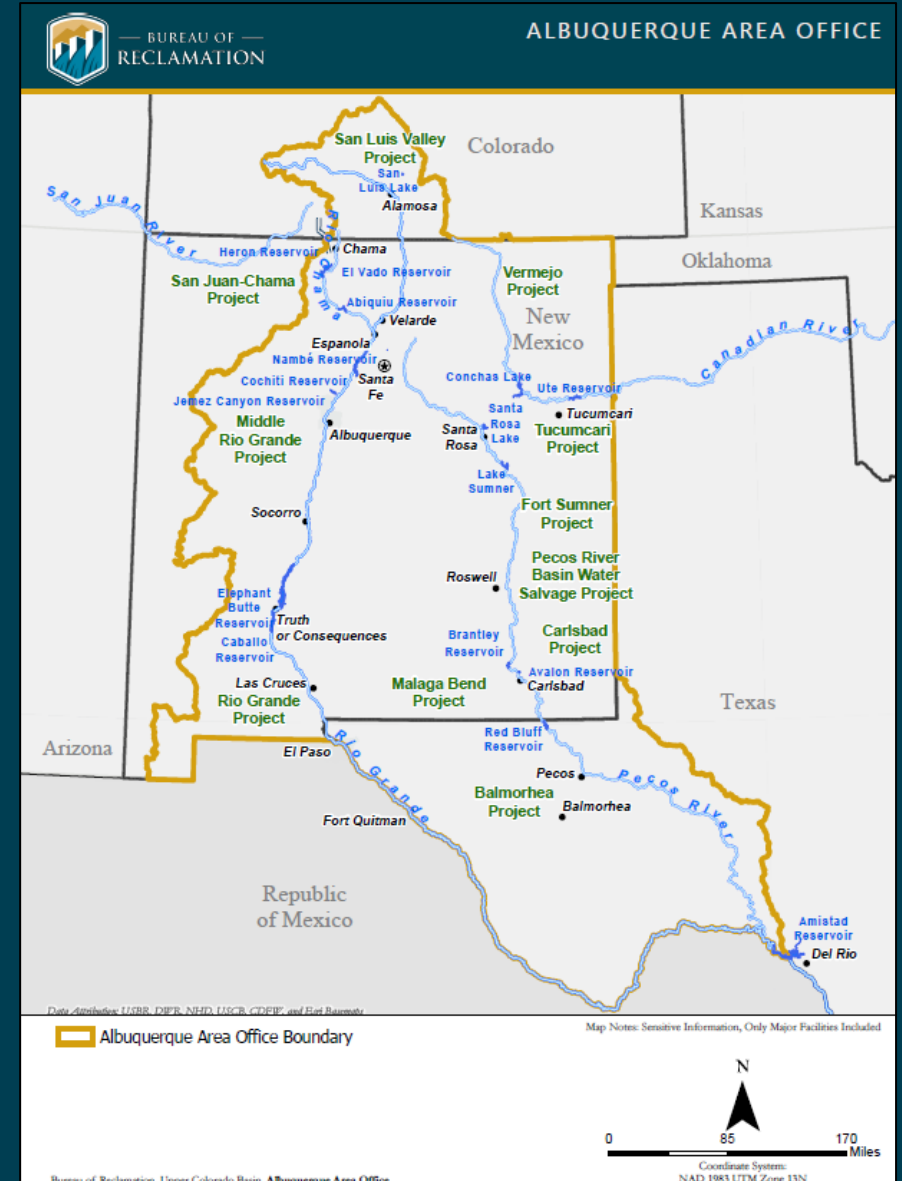
National Conference on Ecosystem Restoration
April 15, 2024

Jennifer Faler, P.E.
Area Manager
Albuquerque Area Office
Bureau of Reclamation



Albuquerque Area Office's Water Management Role

- Geographic Extent: Alamosa area of southern Colorado through central and eastern New Mexico and into west Texas
- Managing delivery of water on the Rio Grande, Rio Chama, and Pecos River
- Responsible for overseeing the management of nine high hazard dams with a combined reservoir storage capacity of more than 3.5 million acre-feet
- Facilities supply water for more than 439,000 acres of irrigated land and several municipal drinking water projects
- Hydropower production at Elephant Butte Dam
- Research and testing at the Brackish Groundwater National Desalination and Research Facility



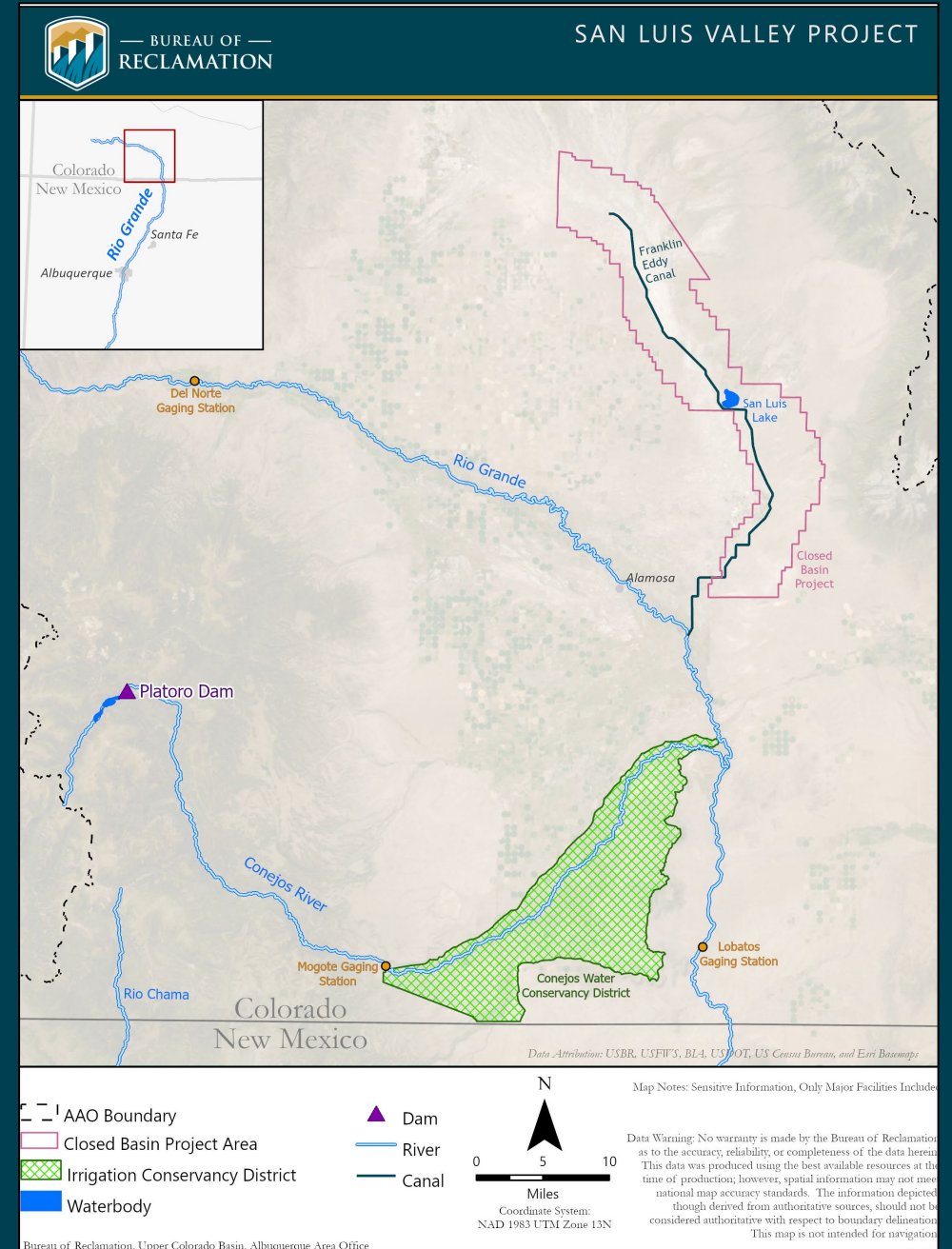
Overview of Presentation

- San Luis Valley Project
- San Juan-Chama Project
- Middle Rio Grande Project
- Rio Grande Project
- Other Reclamation Activities



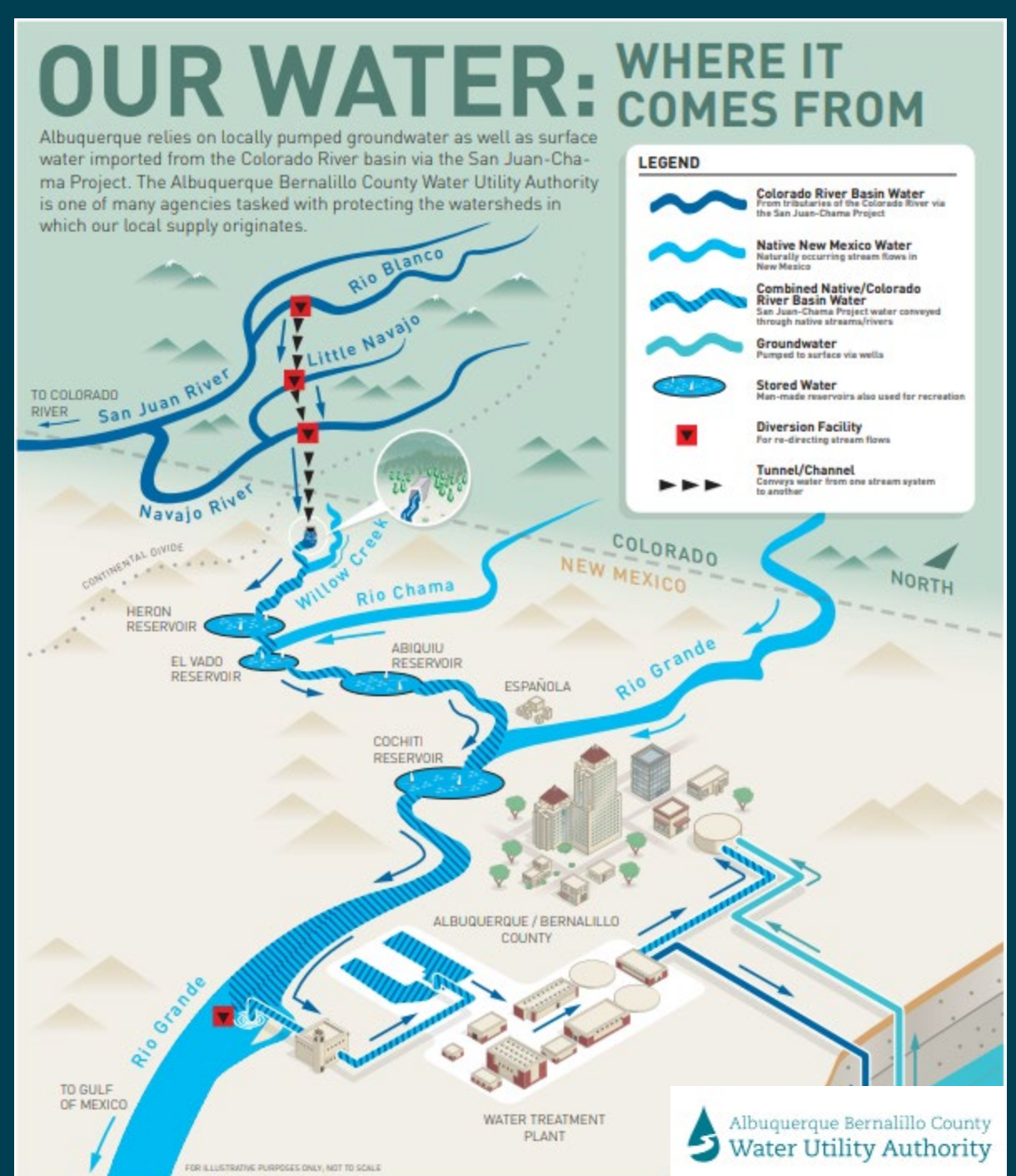
San Luis Valley Project

- Conejos Division
 - Supports 80k+ acres of land
 - Includes Platoro Reservoir
- Closed Basin Diversion
 - Shallow groundwater is salvaged and delivered to the Rio Grande
 - Supports the Colorado delivery of water to New Mexico under the Rio Grande Compact
 - Average annual delivery is ~8 kaf



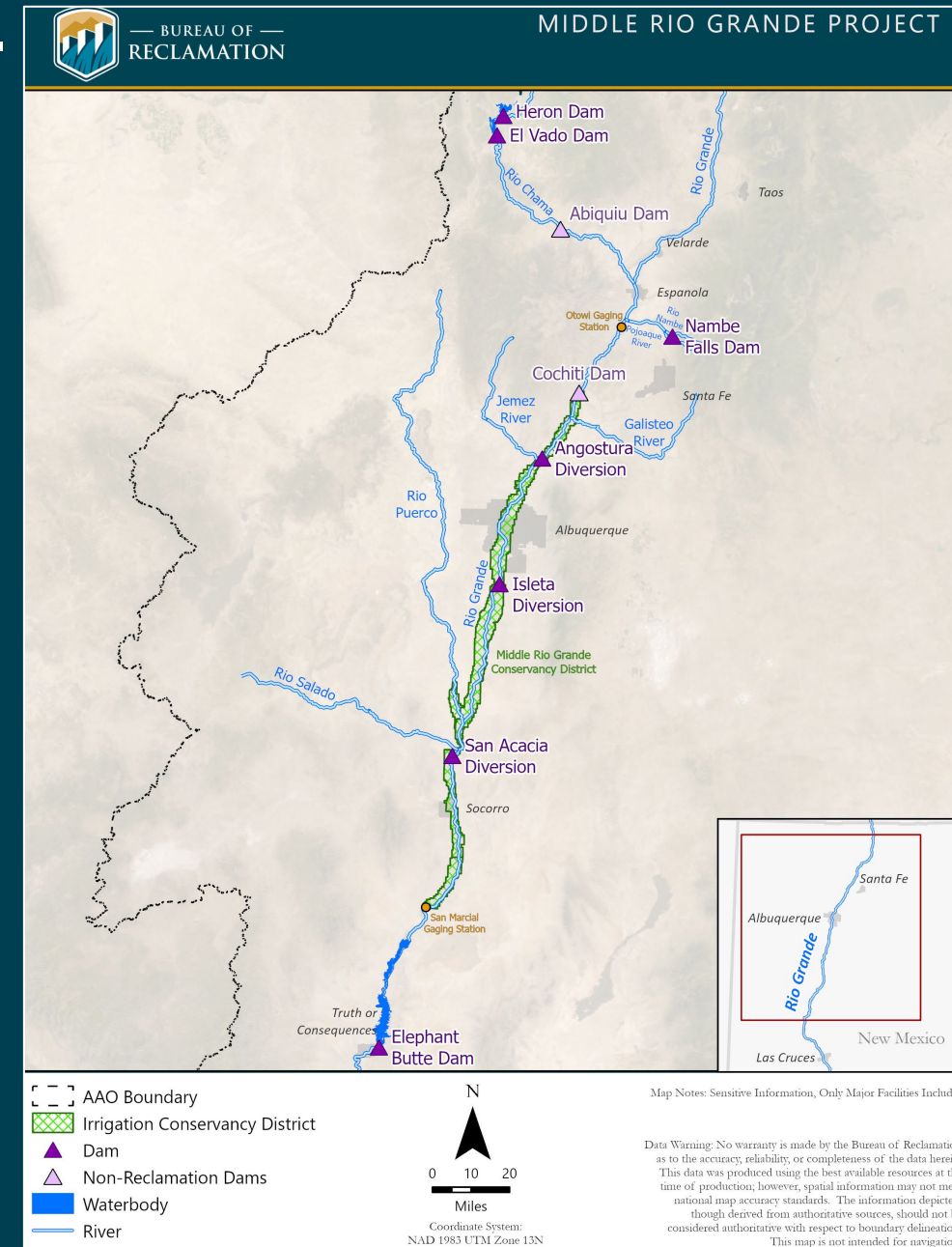
San Juan – Chama Project

- Three diversion dams, two siphons, a tunnel system, and Heron Reservoir
- Transbasin Water - originates in Colorado River watershed
- Customers include municipalities, pueblos, and irrigators
- Main source of water for environmental flows on the Rio Grande



Middle Rio Grande Project – Water Management

- El Vado Reservoir and Dam
- Angostura, Isleta, and San Acacia diversion dams
- The project provides water for irrigation, maintains valley drainage, and provides flood protection
- Fund the Environmental Water Leasing Program and Supplemental Water for the ESA listed species



Middle Rio Grande Project – River Maintenance

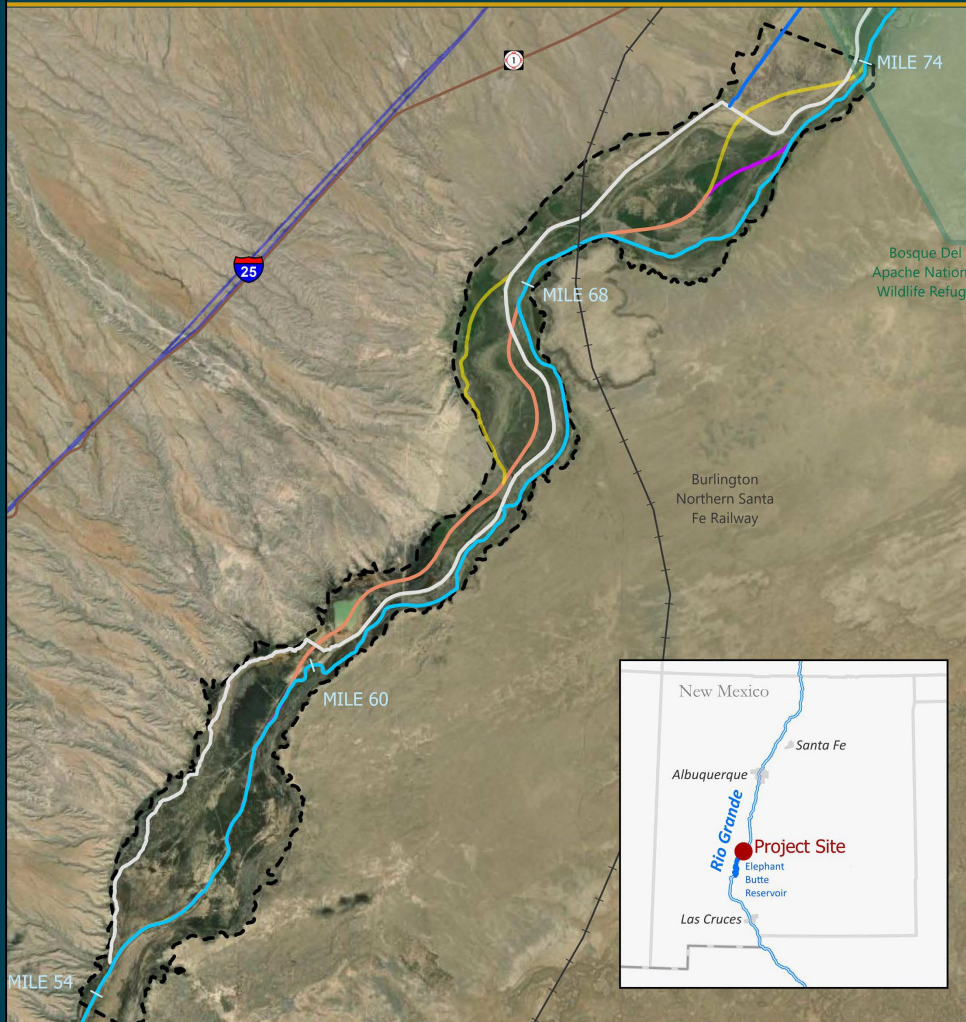
- Authorized by the Flood Control Acts of 1948 and 1950 to perform maintenance and restoration of the Rio Grande floodway and the Low Flow Conveyance Channel.
- Velarde, New Mexico to Caballo Reservoir: 260 river miles
- Goals
 - Effective Water Delivery
 - Channel Sustainability
 - Protection of Riverside Infrastructure and Resources
 - Ecosystem Compatibility





BUREAU OF RECLAMATION

LOWER SAN ACACIA REACH IMPROVEMENTS (LSARI) River Mile 74 - 54.5



Alternative A - No Action	LFCC	USFWS	 Miles Coordinate System: NAD 1983 UTM Zone 13N
Alternative B	Rio Grande River Miles	Project Boundary	
Alternative C	Elmendorf Drain		

Map Notes: Sensitive Information, Only Major Facilities Included

Data Warning: No warranty is made by the Bureau of Reclamation as to the accuracy, reliability, or completeness of the data herein. This data was produced using the best available resources at the time of production; however, spatial information may not meet national map accuracy standards. The information depicted, though derived from authoritative sources, should not be considered authoritative with respect to boundary delineation. This map is not intended for navigation.

Lower San Acacia Reach Improvements Project

- Goals:
 - Improve water delivery to Elephant Butte
 - Enhance ecosystem health
 - Protect and promote recovery of endangered species
 - Minimize river drying
 - Improve riparian health
 - Optimize long-term O&M activities
- Evaluating three alternatives
 - Alt A – No Action
 - Alt B – Removal of LFCC above railroad bridge
 - Alt C – Removal of LFCC below railroad bridge

LSARI Current Condition

The Low Flow Conveyance Channel (LFCC) functions as a drain for the floodplain. Maintaining the LFCC does not improve the function of the river or associated habitat.

During low flows in the summer months, the river dries, negatively impacting fish populations and riparian vegetation.

The spoil levee confines the channel and sediment deposition to the east side of the valley.

The river is perched because the channel is above the adjacent floodplain.

Following high-flow events, surface water ponding in the floodplain causes fish stranding and decreases downstream water delivery.

The river is disconnected from the water table resulting in high rates of seepage loss.

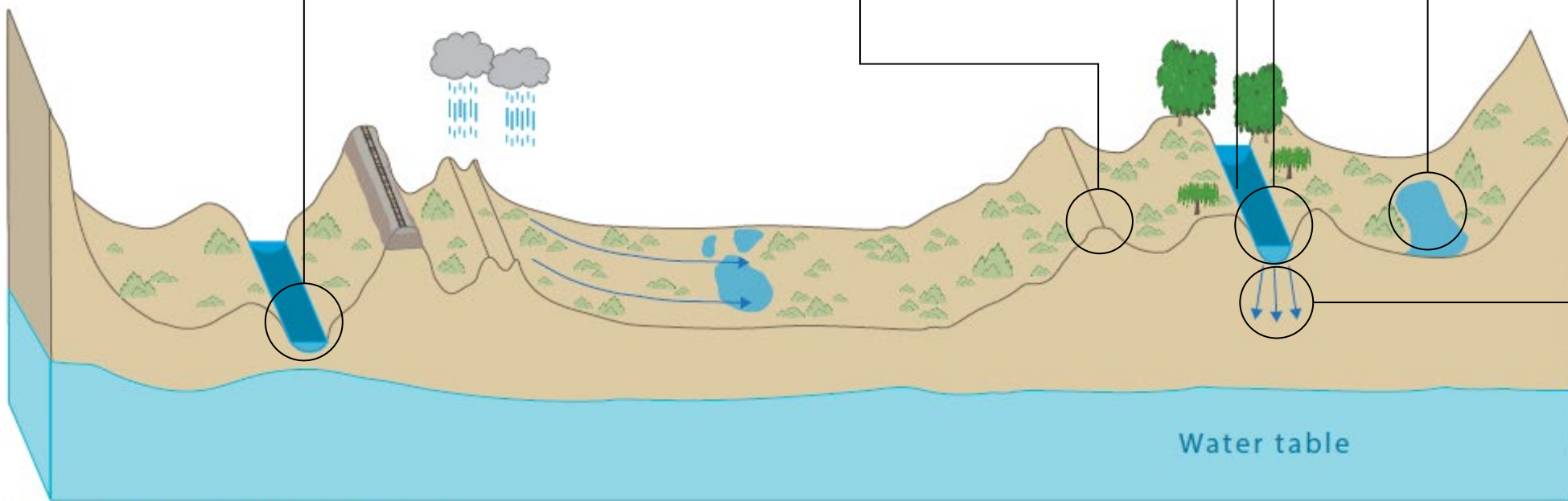


Figure is not to scale and is for illustrative purposes only.



LSARI Proposed Future Condition

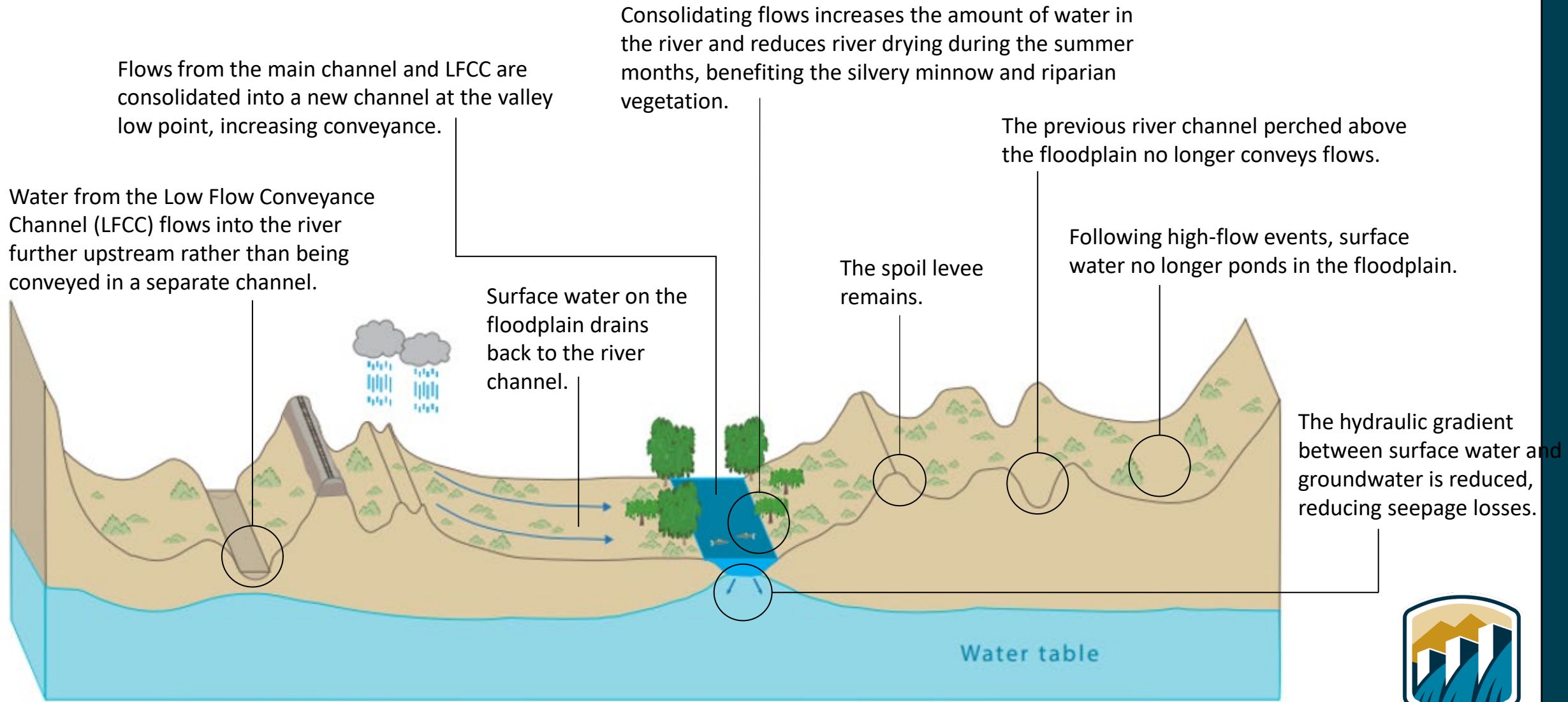
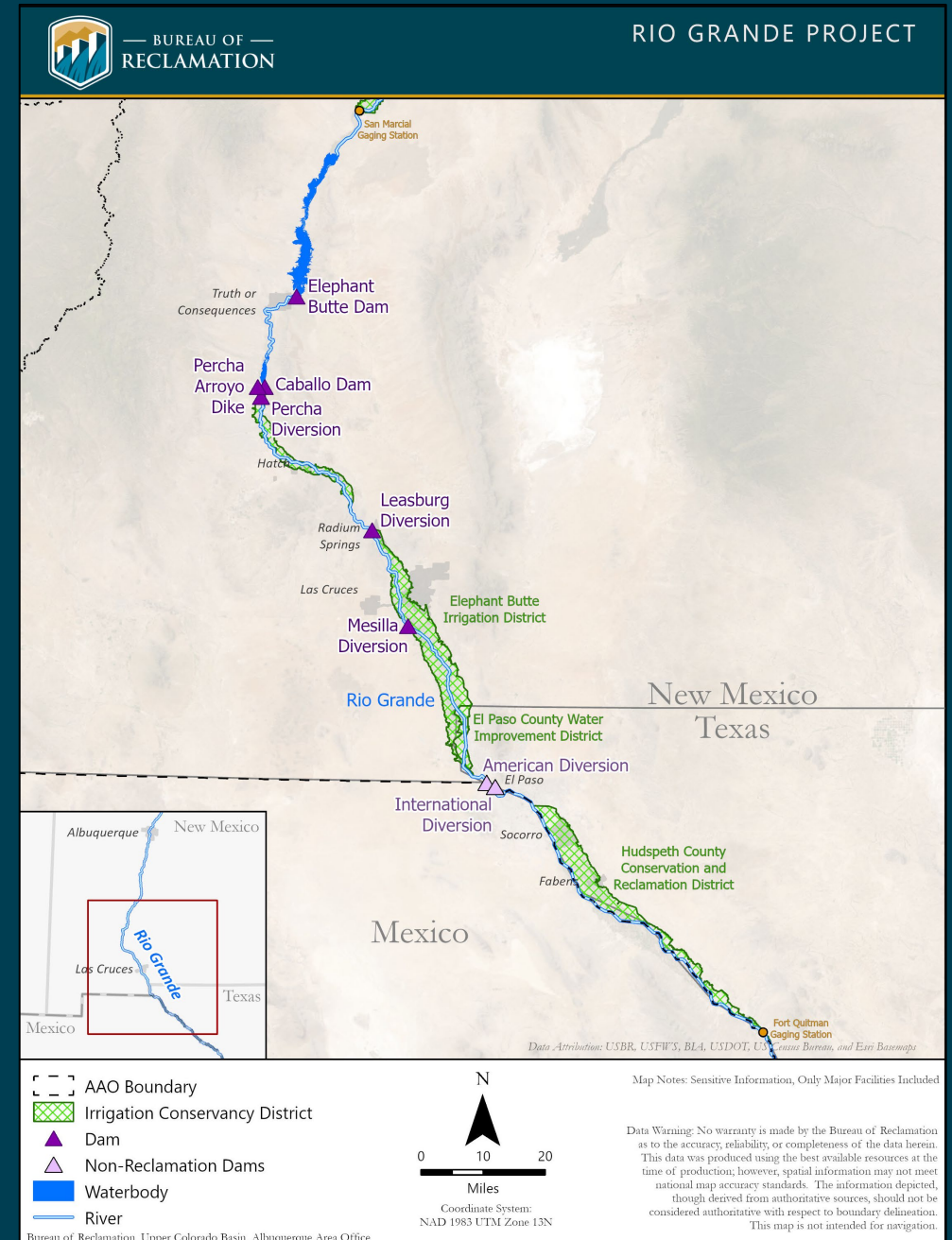


Figure is not to scale and is for illustrative purposes only.



Rio Grande Project

- Elephant Butte and Caballo dams and reservoirs
- Three Reclamation-owned diversion dams
- Water delivered to southern NM, west TX, and Mexico
- The Compact Point for the NM Delivery to TX is below Elephant Butte Reservoir
- Stakeholder collaboration for drought resilience and ecosystem restoration



Other Key Reclamation Activities

- Middle Rio Grande Major Environmental Programs
 - Environmental Water Leasing Program
 - Fish Passage projects at San Acacia and Isleta diversion dams
 - Middle Rio Grande Collaborative Program
- Extraordinary Maintenance Projects
- WaterSMART Grants and other Financial Assistance
- BIL and IRA Implementation
- Rural Water Program
- Rio Grande Pueblo Irrigation Infrastructure
- Indian Water Rights Settlements



Questions?

Jennifer Faler, P.E.
Area Manager
Albuquerque Area Office
Bureau of Reclamation
jfaler@usbr.gov

Carolyn Donnelly, P.E.
Water Operations Manager
Albuquerque Area Office
Bureau of Reclamation
cdonnelly@usbr.gov