

The Regional Waterway Management System

- 4 Counties
- Population ~ 1.6 million
- 12% of Florida's registered boats
- ~1,500 miles of boating access channels

Manatee
Sarasota
Charlotte
Lee

GUIDING DOCUMENT

MEMORANDUM OF AGREEMENT

Among

The Florida Department of Environmental Protection
Florida Sea Grant College Program
and
West Coast Inland Navigation District

Relating to

A REGIONAL WATERWAY MANAGEMENT SYSTEM

DATA AND INFORMATION NEEDS



- Field inventories to get the locations and attributes of boats, signs, and channel depths
- Spatial data on sea grass, mangroves, & management units (aquatic preserves)

CHARACTERIZE THE VESSEL TRANSPORTATION INFRASTRUCTURE

- ✓ Boat Accessibility
 - Not Restricted
 - Somewhat Restricted
 - Restricted
 - Severely Restricted
 - Blocked

- ✓ Channel Restrictions
 - Not Restricted
 - Somewhat Restricted
 - Restricted
 - Severely Restricted
 - Blocked



GOALS AND OBJECTIVES

Ensure safe, environmentally sustainable access to water

- Fit channel maintenance to boat draft needs



GOALS AND OBJECTIVES

Ensure safe, environmentally sustainable access to water

- Minimize impacts on bay habitats

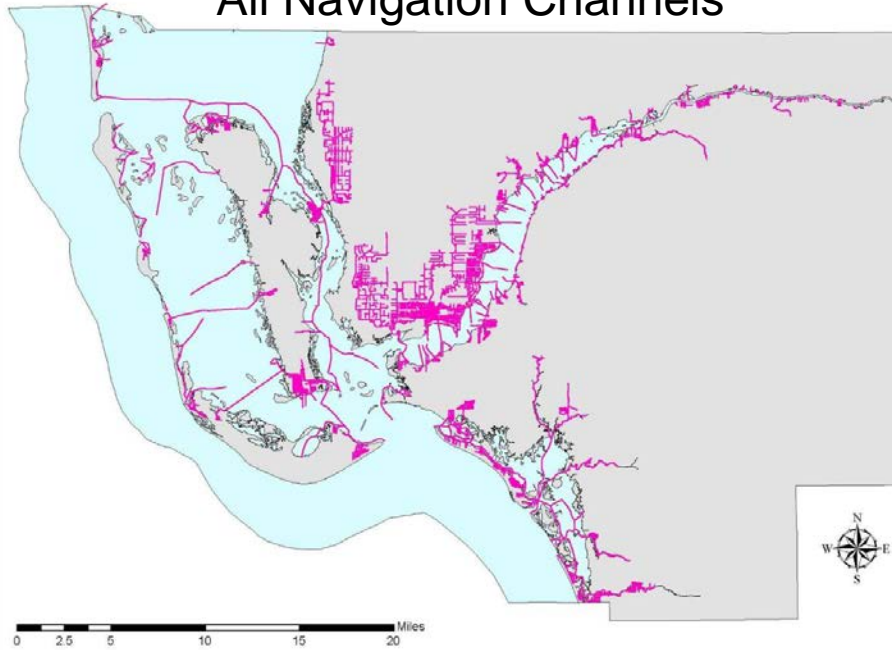


Prop Scarring of
Seagrass Beds

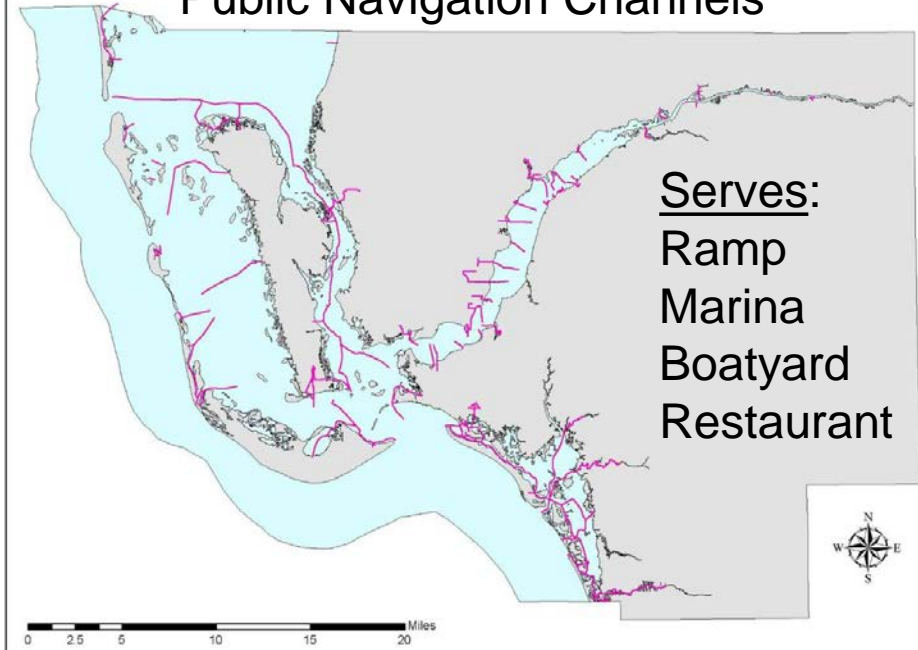
Photo Credit: USGS - Sirenia Project

DELINEATE THE PUBLIC TRANSPORTATION SYSTEM

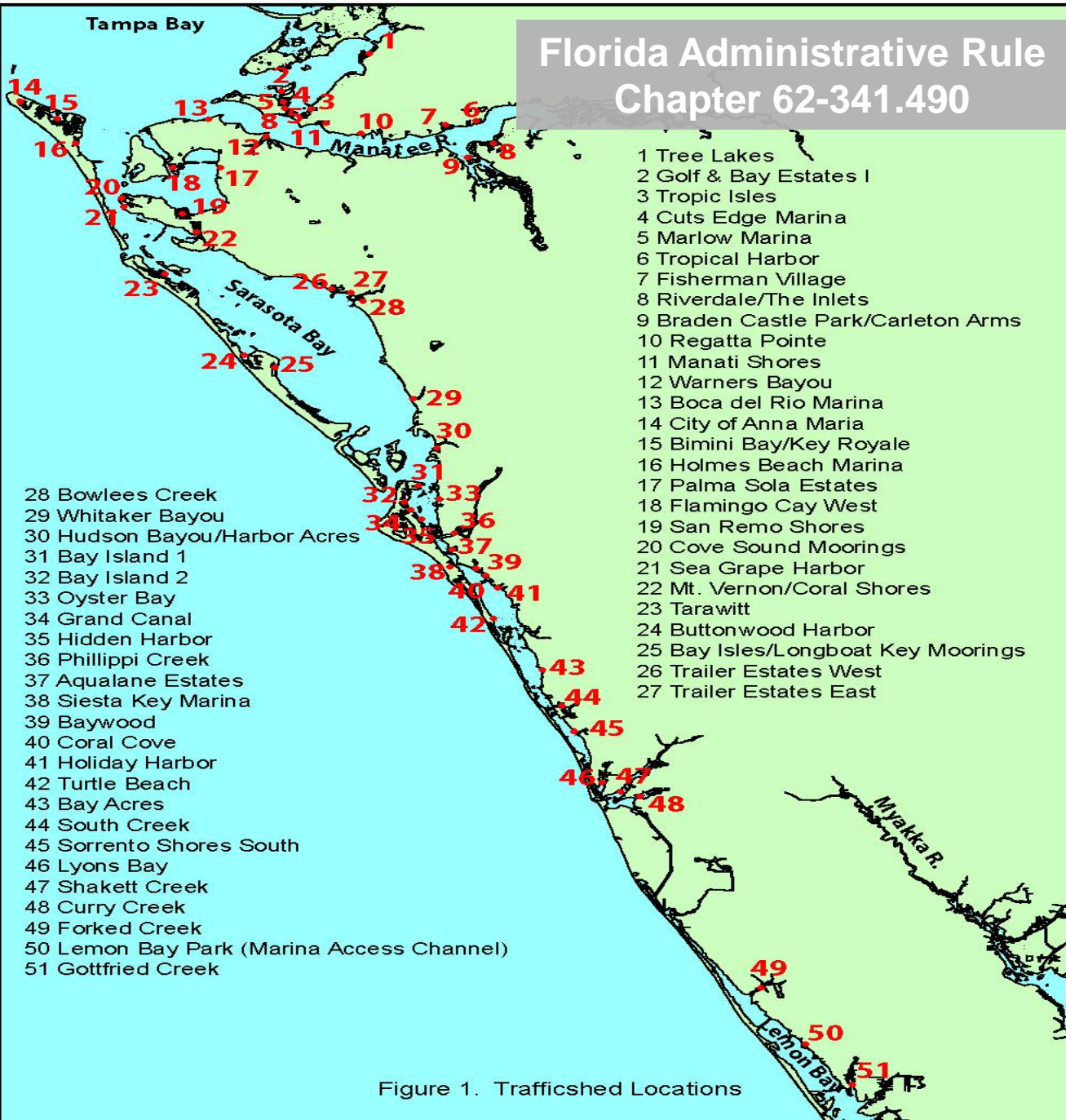
All Navigation Channels



Public Navigation Channels



Florida Administrative Rule Chapter 62-341.490



- 28 Bowlees Creek
- 29 Whitaker Bayou
- 30 Hudson Bayou/Harbor Acres
- 31 Bay Island 1
- 32 Bay Island 2
- 33 Oyster Bay
- 34 Grand Canal
- 35 Hidden Harbor
- 36 Phillippi Creek
- 37 Aqualane Estates
- 38 Siesta Key Marina
- 39 Baywood
- 40 Coral Cove
- 41 Holiday Harbor
- 42 Turtle Beach
- 43 Bay Acres
- 44 South Creek
- 45 Sorrento Shores South
- 46 Lyons Bay
- 47 Shakett Creek
- 48 Curry Creek
- 49 Forked Creek
- 50 Lemon Bay Park (Marina Access Channel)
- 51 Gottfried Creek

- 1 Tree Lakes
- 2 Golf & Bay Estates I
- 3 Tropic Isles
- 4 Cuts Edge Marina
- 5 Marlow Marina
- 6 Tropical Harbor
- 7 Fisherman Village
- 8 Riverdale/The Inlets
- 9 Braden Castle Park/Carleton Arms
- 10 Regatta Pointe
- 11 Manati Shores
- 12 Warners Bayou
- 13 Boca del Rio Marina
- 14 City of Anna Maria
- 15 Bimini Bay/Key Royale
- 16 Holmes Beach Marina
- 17 Palma Sola Estates
- 18 Flamingo Cay West
- 19 San Remo Shores
- 20 Cove Sound Moorings
- 21 Sea Grape Harbor
- 22 Mt. Vernon/Coral Shores
- 23 Tarawitt
- 24 Buttonwood Harbor
- 25 Bay Isles/Longboat Key Moorings
- 26 Trailer Estates West
- 27 Trailer Estates East

Figure 1. Traffiched Locations

Noticed
General
Permit with
the Florida
Department of
Environmental
Protection

THE ADVANTAGES: A COUNTY PERSPECTIVE

- Science based management
- Greater regulatory certainty
- Streamlined process
- Lower pre/post-construction costs
- Defined public expectations



FIRST BOAT RIDE!

THANK YOU