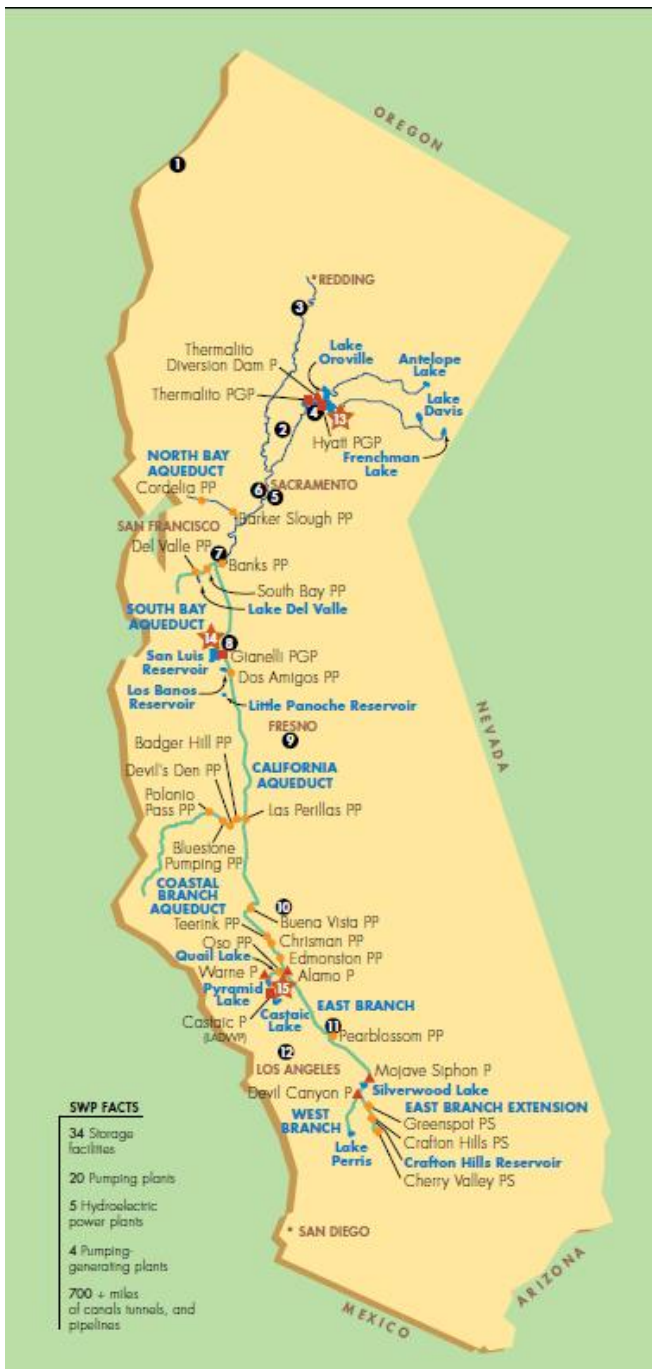


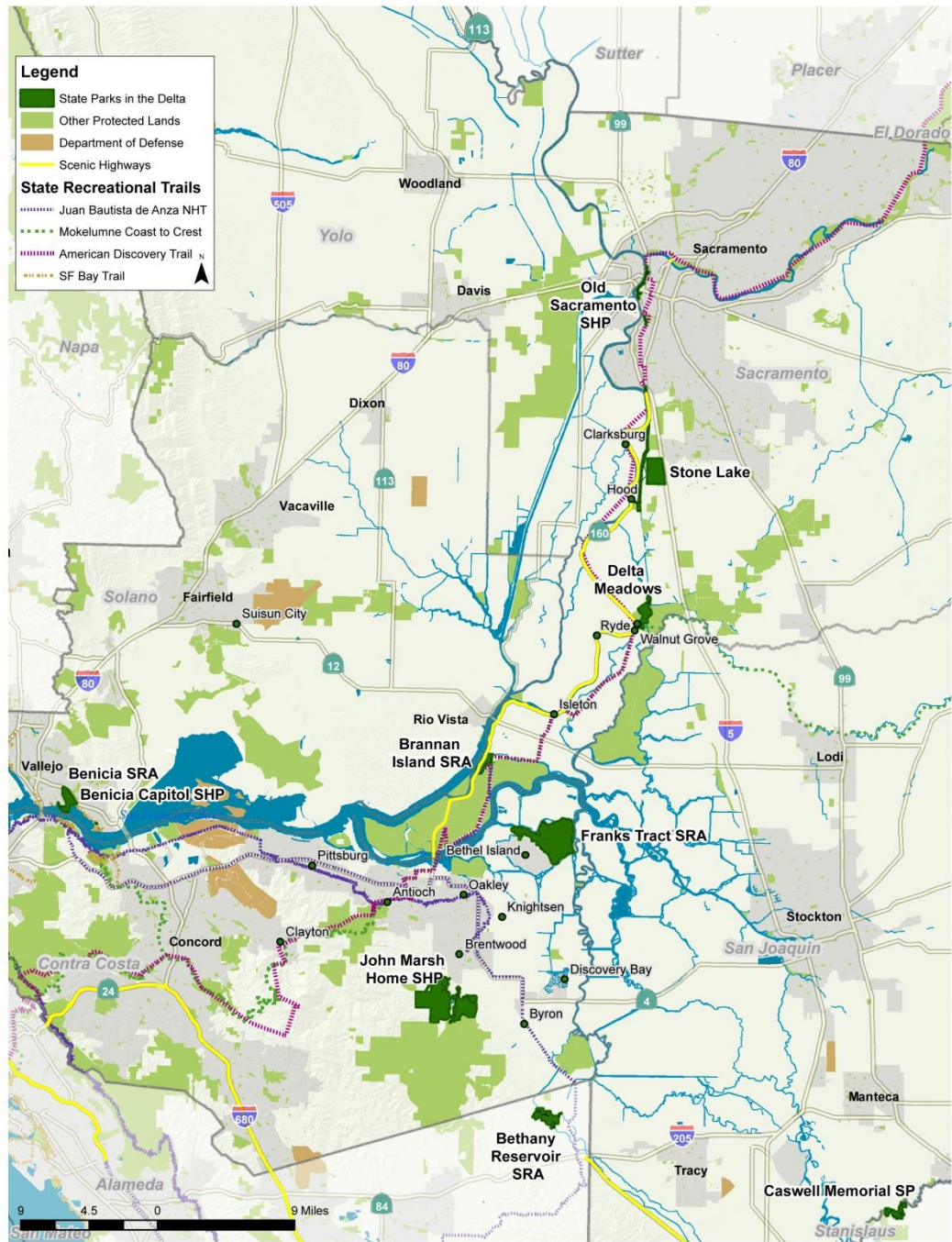
California State Parks' Recreation Proposal for the Delta and Suisun Marsh

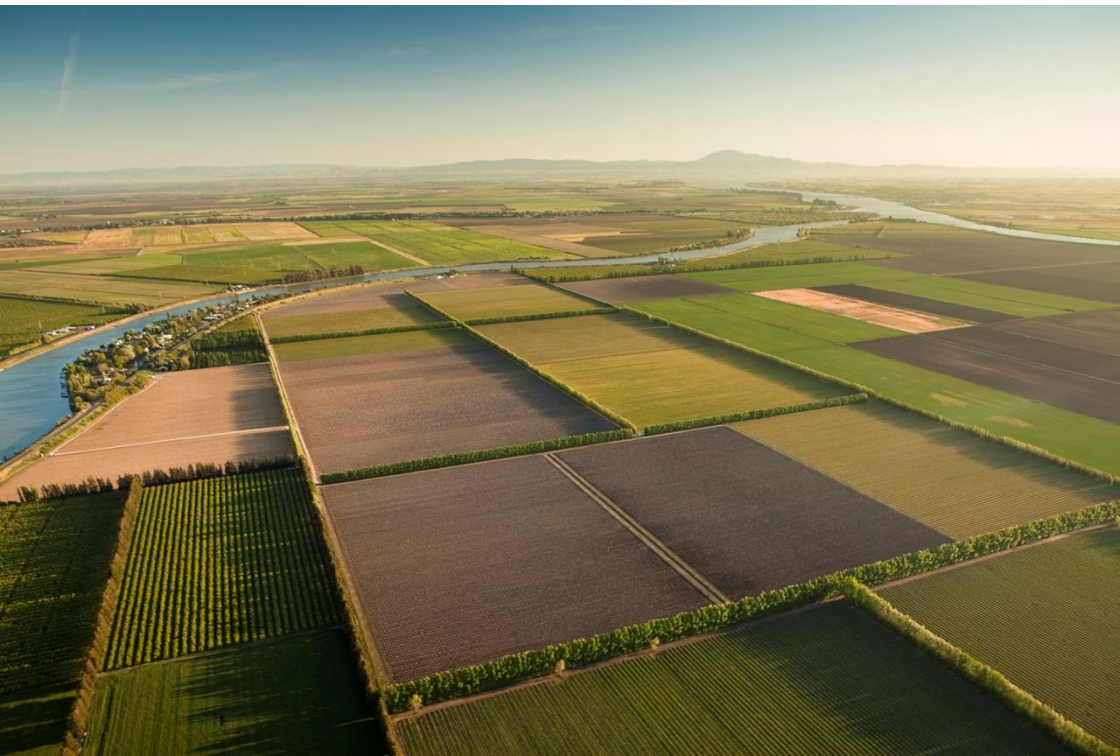


NCER July 29-
August 3, 2013



Where are we?





The Sacramento-San Joaquin Delta today

Photo credit: David Lloyd, AECOM

Suisun Marsh today



Drivers of Change



Delta Planning Efforts



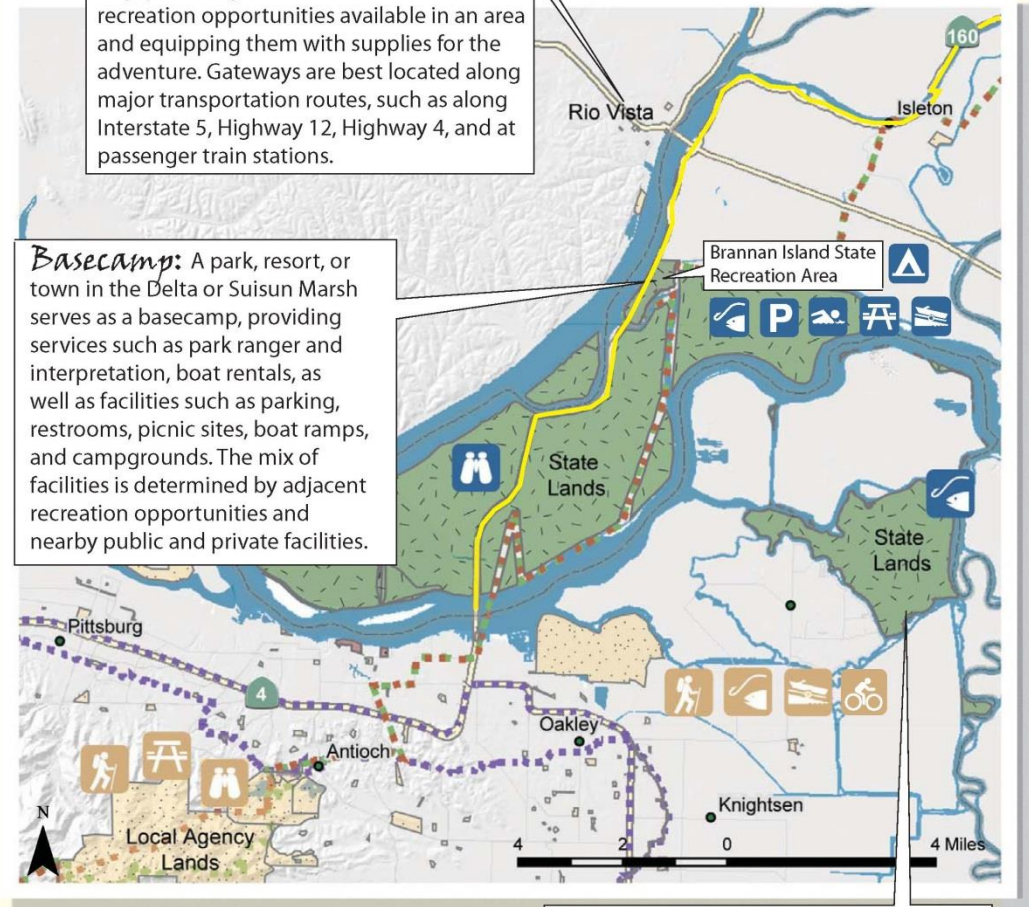
Delta Days: Gateways and Basecamps lead to Adventure



Gateway >
 Basecamp >
 Adventure

Gateway: A community on the edge of the Delta or Suisun Marsh serves as a gateway, providing information to visitors about recreation opportunities available in an area and equipping them with supplies for the adventure. Gateways are best located along major transportation routes, such as along Interstate 5, Highway 12, Highway 4, and at passenger train stations.

Basecamp: A park, resort, or town in the Delta or Suisun Marsh serves as a basecamp, providing services such as park ranger and interpretation, boat rentals, as well as facilities such as parking, restrooms, picnic sites, boat ramps, and campgrounds. The mix of facilities is determined by adjacent recreation opportunities and nearby public and private facilities.



Legend

Scenic Highways

Public Lands
 Local Agency
 State

State Recreational Trails

Juan Bautista de Anza National Historic Trail (NHT)
 Mokelumne Coast-to-Crest Trail
 American Discovery Trail

Adventure: Offering diverse recreation activities may entice more visitors to stay longer, visit for the first time, or visit more often. Visitors may take scenic roadways, multi-use trails, water trails, and heritage corridors to nearby hiking, wildlife viewing, angling, hunting, and other activities on public and private land, as well as tour heritage and agri-tourism sites.

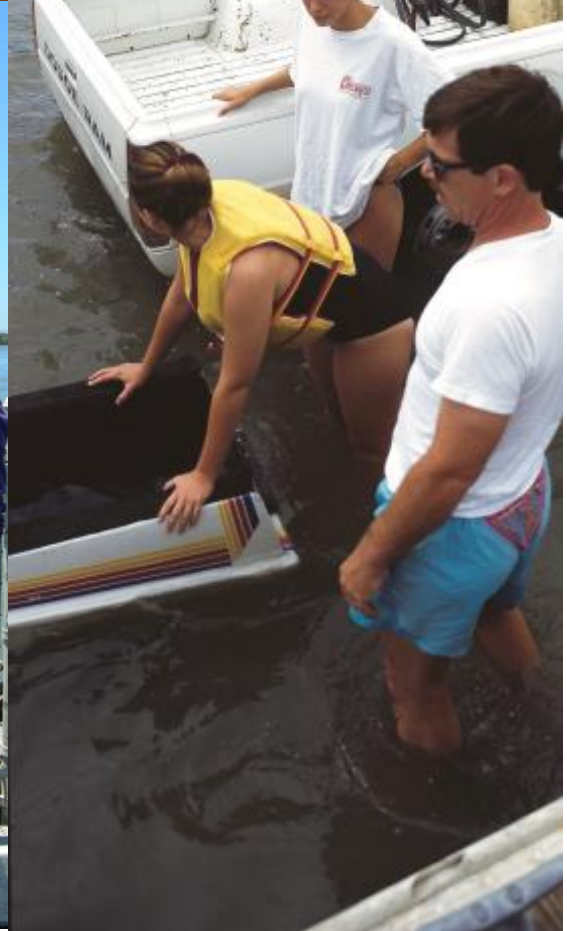


Basecamps





Adventures



Delta Adventures: Bird Watching Safari



Photo by Del Davidson via City of Suisun City



www.parks.ca.gov/deltarecreation

Delta.Recreation@parks.ca.gov

**Cheryl Essex,
Associate Landscape
Architect**

