

Sage-Grouse Initiative (SGI)

A STRATEGIC APPROACH TO FARM BILL CONSERVATION PROGRAM DELIVERY



World-class Wildlife

Tim Griffiths
SGI National Coordinator



Rural Ways of Life

David Naugle
SGI Science Advisor

NRCS' Sage-Grouse Initiative

- ◎ Remove threats to sage-grouse and improve sustainability of working ranches
- ◎ Implement enough of the right practices in the right places to benefit populations
- ◎ Assess effectiveness, quantify benefits and adapt program delivery



What's Good for Rangelands Is Good for Grouse



Beneficial for both

- Large and intact rangeland
- Rangeland plant diversity
- Healthy rangeland

Negative for both

- Urbanization/subdivision
- Encroached conifer

**Identify and
articulate
shared 'vision'**



subdivision



encroached conifers



FRAGMENTATION

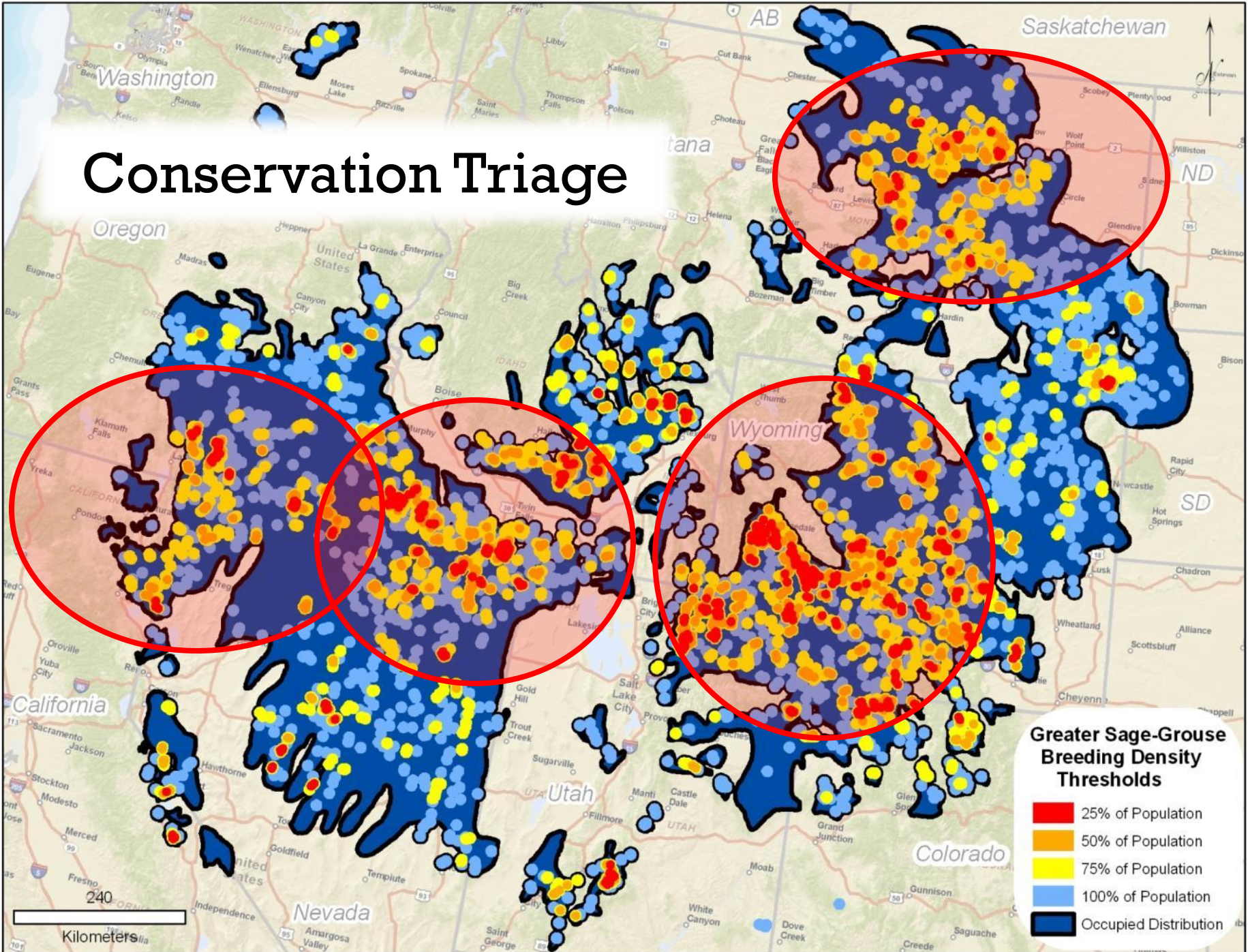
tillage

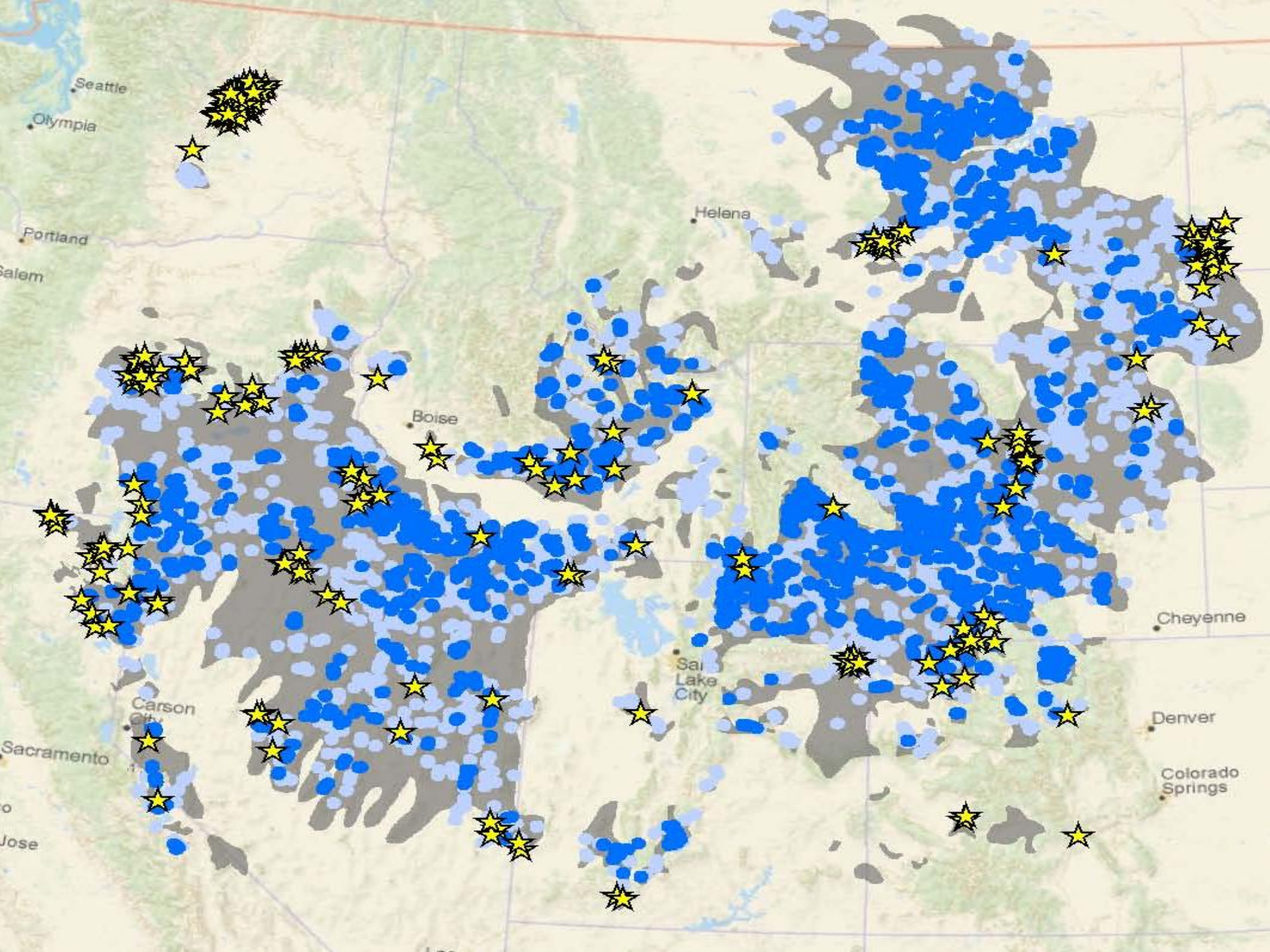


energy

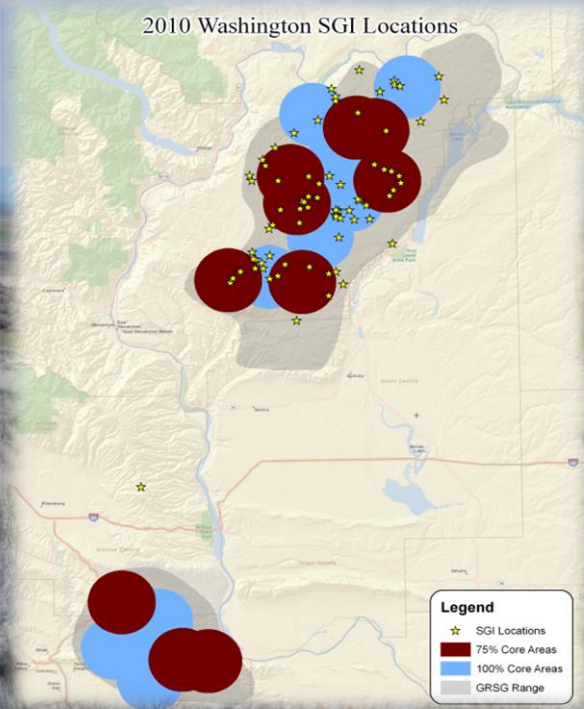


Conservation Triage





WASHINGTON

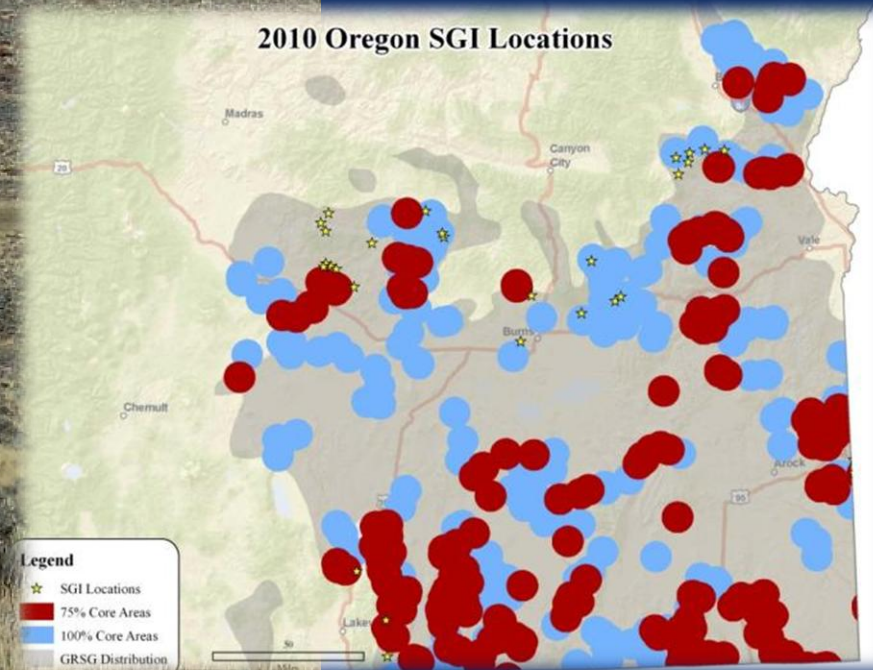


OREGON

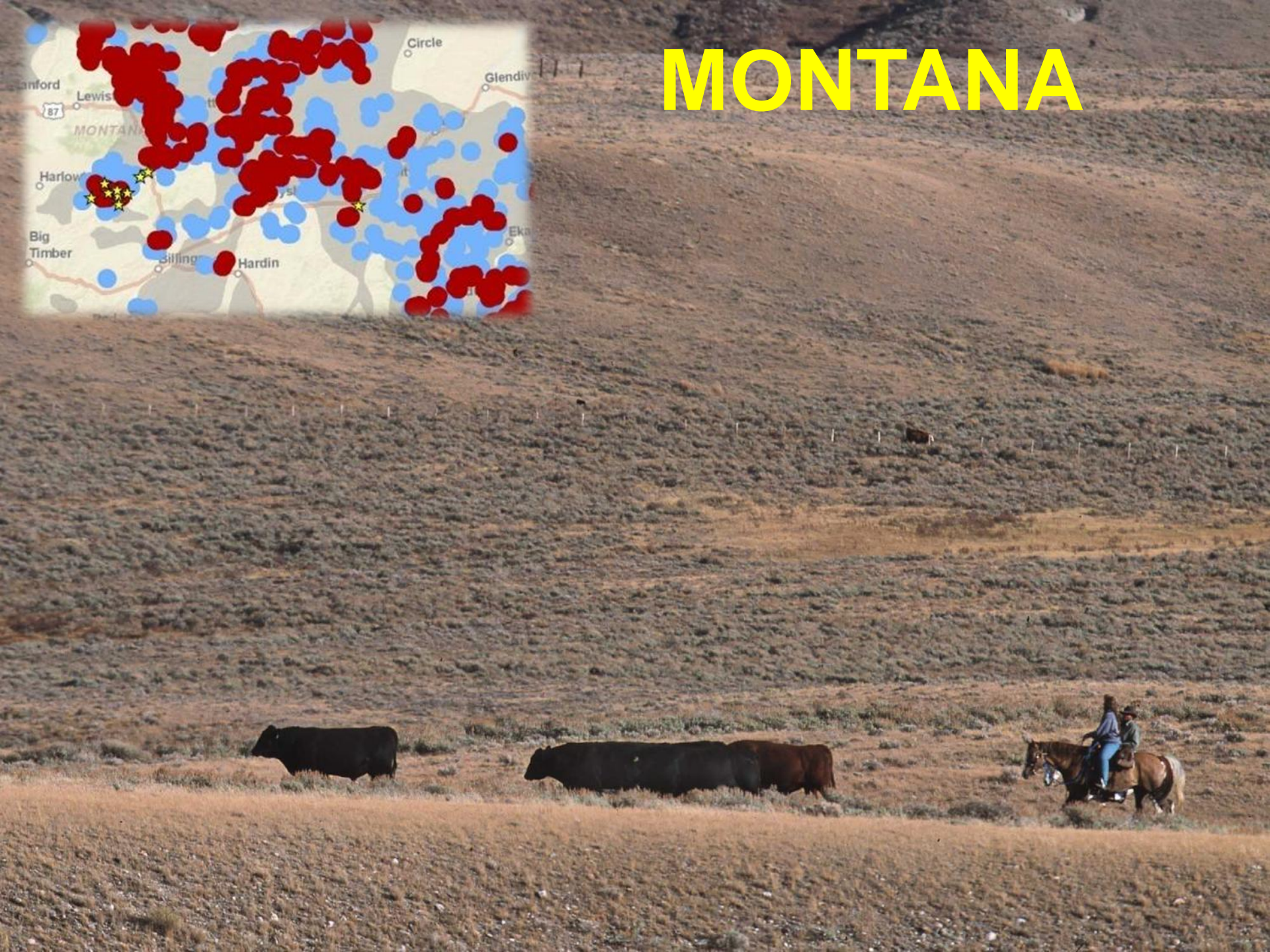
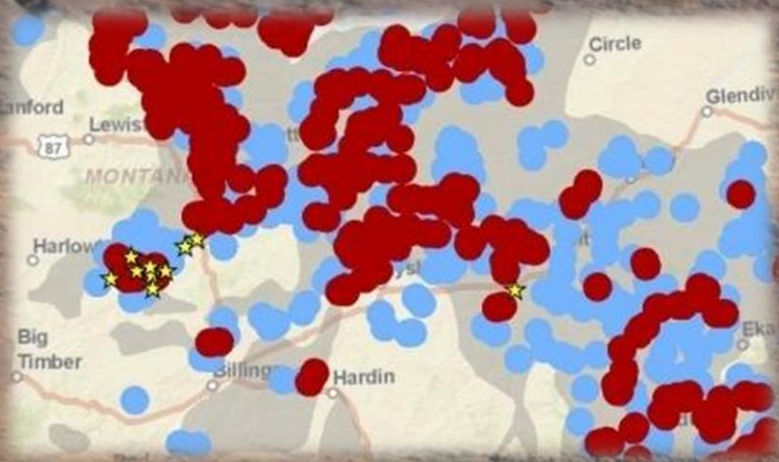
BEFORE



AFTER



MONTANA



Improve Grazing Management

1,000 sq miles



Remove Encroached Conifers

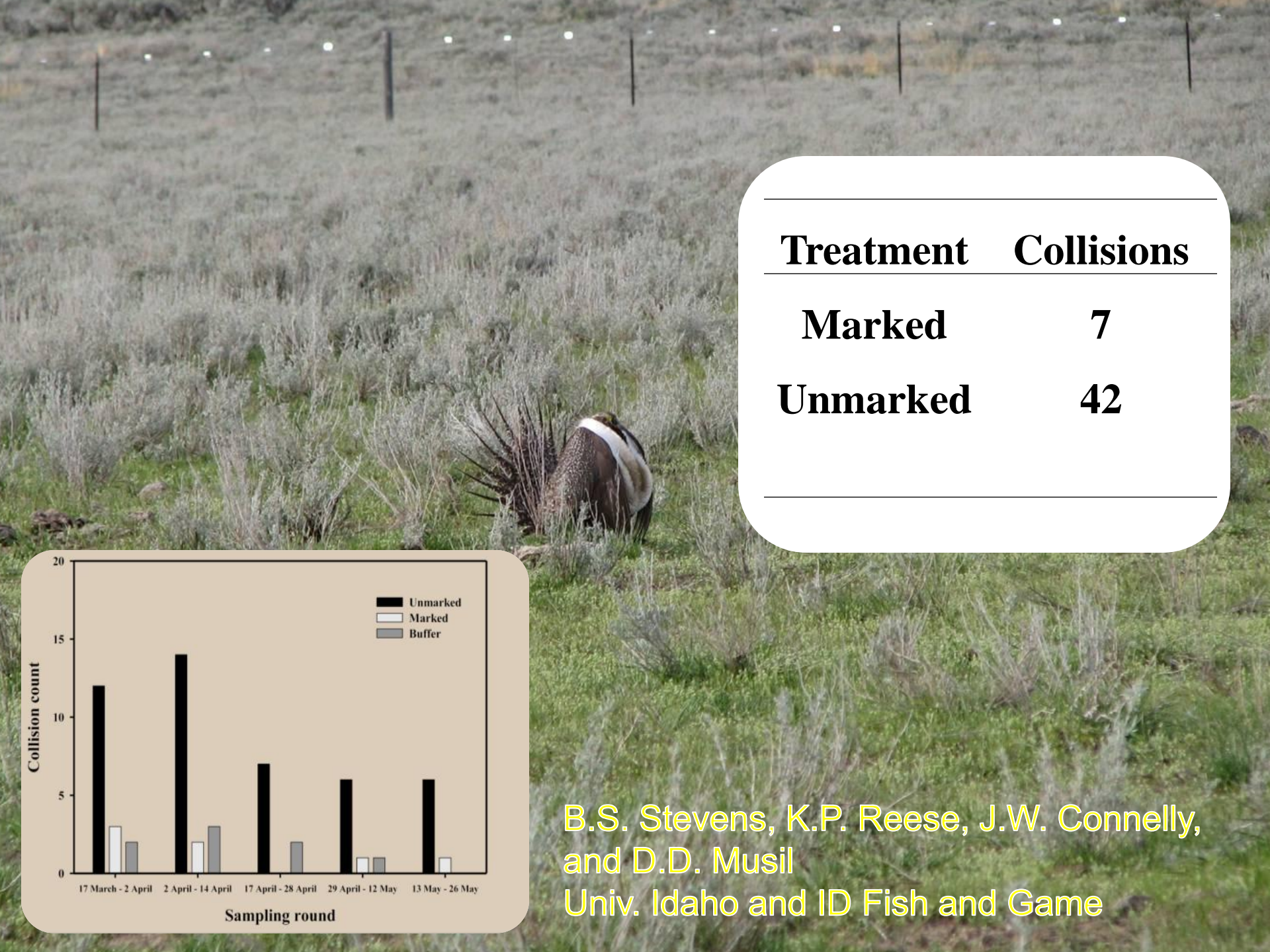
40,000 Ac



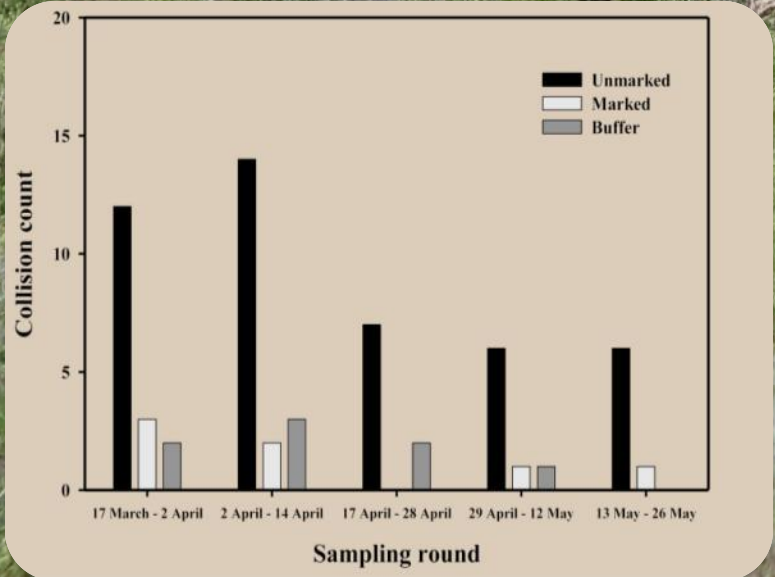
**Mark or Move 'High Risk' Fence
Within 0.25 mi of Leks**

180 miles





| Treatment | Collisions |
|------------------|-------------------|
| Marked | 7 |
| Unmarked | 42 |

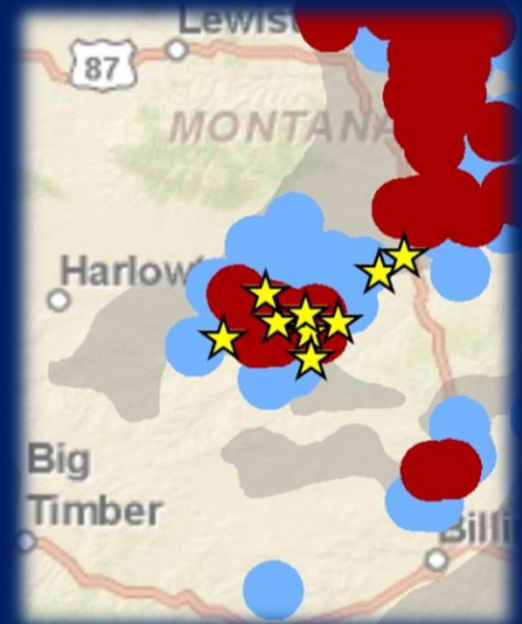


B.S. Stevens, K.P. Reese, J.W. Connelly,
and D.D. Musil
Univ. Idaho and ID Fish and Game

2 inch increase in grass height



8% increase in nest success



equates to 10% increase in population growth



Conference Report

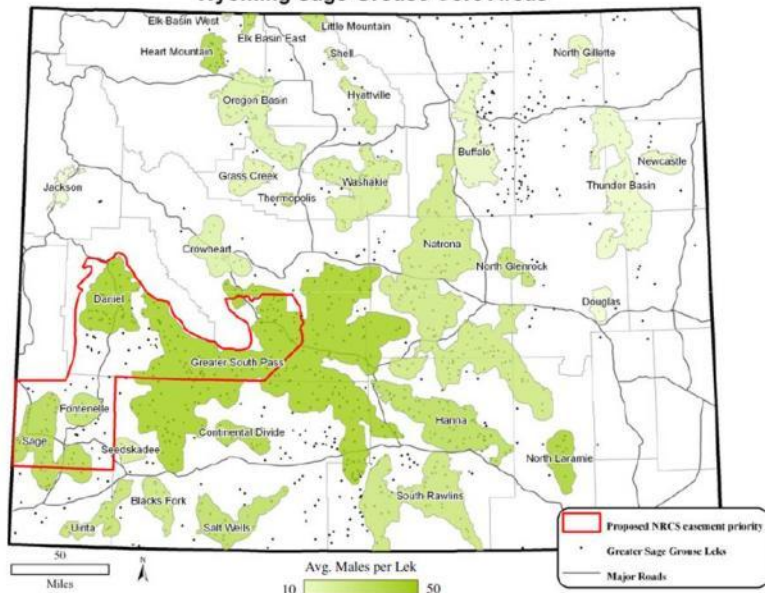
- *Conditioned 40 practices to ensure benefits to sage-grouse*
- *Provides ‘certainty’ to landowners*
- *FWS Report recommendations*



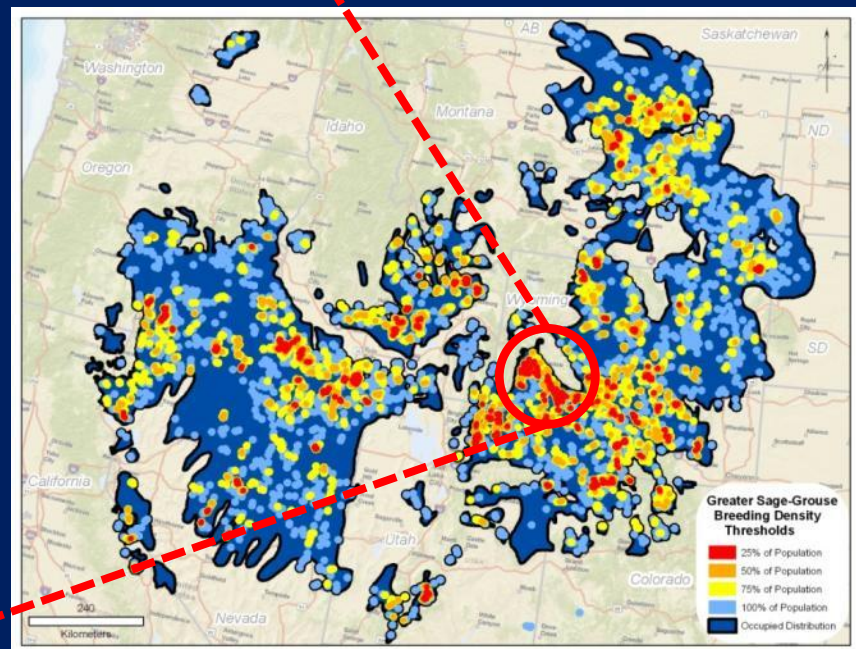
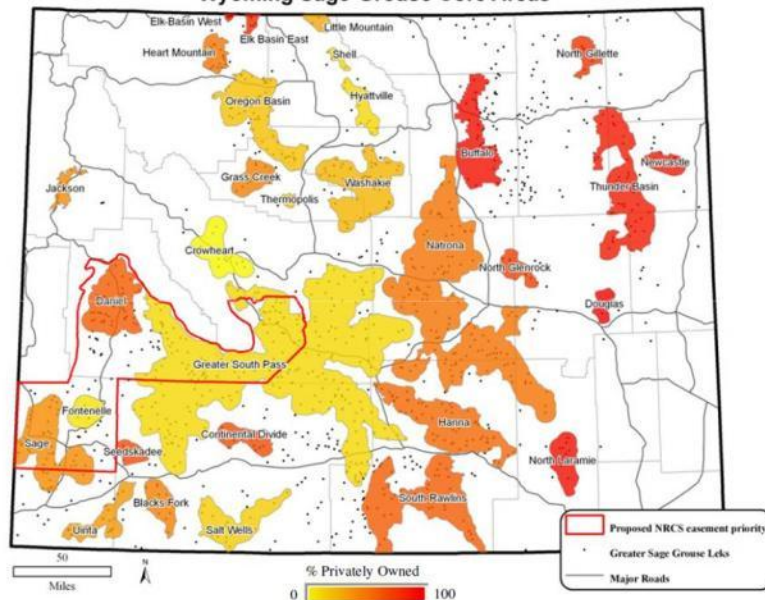
WYOMING



Wyoming Sage-Grouse Core Areas



Wyoming Sage-Grouse Core Areas



sage-grouse is a landscape 'focal' species



The 'Buy-In' for SGI

“The feds really stepped up to keep sage grouse off endangered species list. It’s mind-boggling how fast and well funded it is...and applying science this way is unprecedented.”
-Tom Remington, director CDOW.

“[SGI] has won ranchers' support...for working alongside livestock owners rather than removing land from the grazing system,”

Mike Deering, National Cattlemen's Beef Association





SGI SWAT

\$6.25M to increase capacity

- 24 Partners

- 17 partner positions

- Science capacity

- Outreach

We may have branded SGI with a sage-grouse but our creation now transcends that of a bird and instead embodies our commitment to maintaining rural ways of life and world-class wildlife populations in the West.

