

Sacramento-San Joaquin Delta

Levee Stability Program

McCormack-Williamson Tract Project

Sacramento District
and Reclamation District 2110

In cooperation with:
The Nature Conservancy
California Dept. of Water Resources

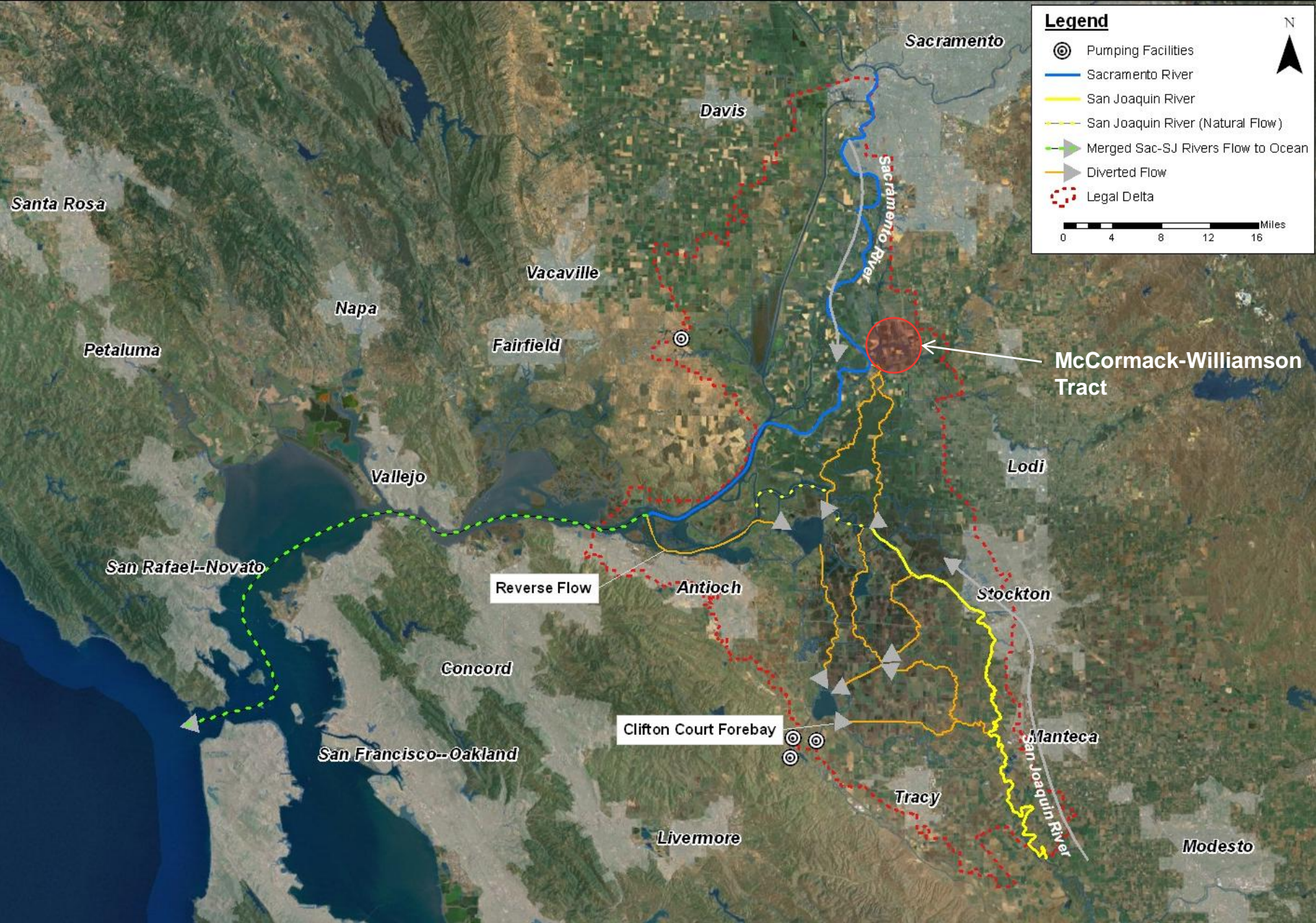
Brooke Schlenker
Sacramento District
August 2011



®

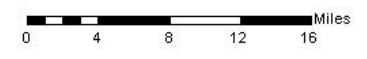
US Army Corps of Engineers
BUILDING STRONG®





Legend

- ⊙ Pumping Facilities
- Sacramento River
- San Joaquin River
- - - San Joaquin River (Natural Flow)
- Merged Sac-SJ Rivers Flow to Ocean
- Diverted Flow
- ⋯ Legal Delta





Sacramento River

North Mokelumne River

McCormack-Williamson Tract

Cosumnes River

Mokelumne River

Diverts water south for water supply

Delta Cross Channel

North Mokelumne River

South Mokelumne River

McCormack-Williamson Tract History

- Last to “reclaim” the land
- Legal agreement with adjacent landowners
 - Must have the *lowest* levees
- First to flood
 - Floods from the north
 - Ponds at the south
 - South levee fails, causing surge effect
- The Nature Conservancy purchased the land for ecosystem restoration



Identified Problems

Ecosystem

- Prior to “reclamation” of land, area comprised of tule marsh – None remains
- 35+ Federally listed species in the Delta
- Numerous invasive species throughout the Delta

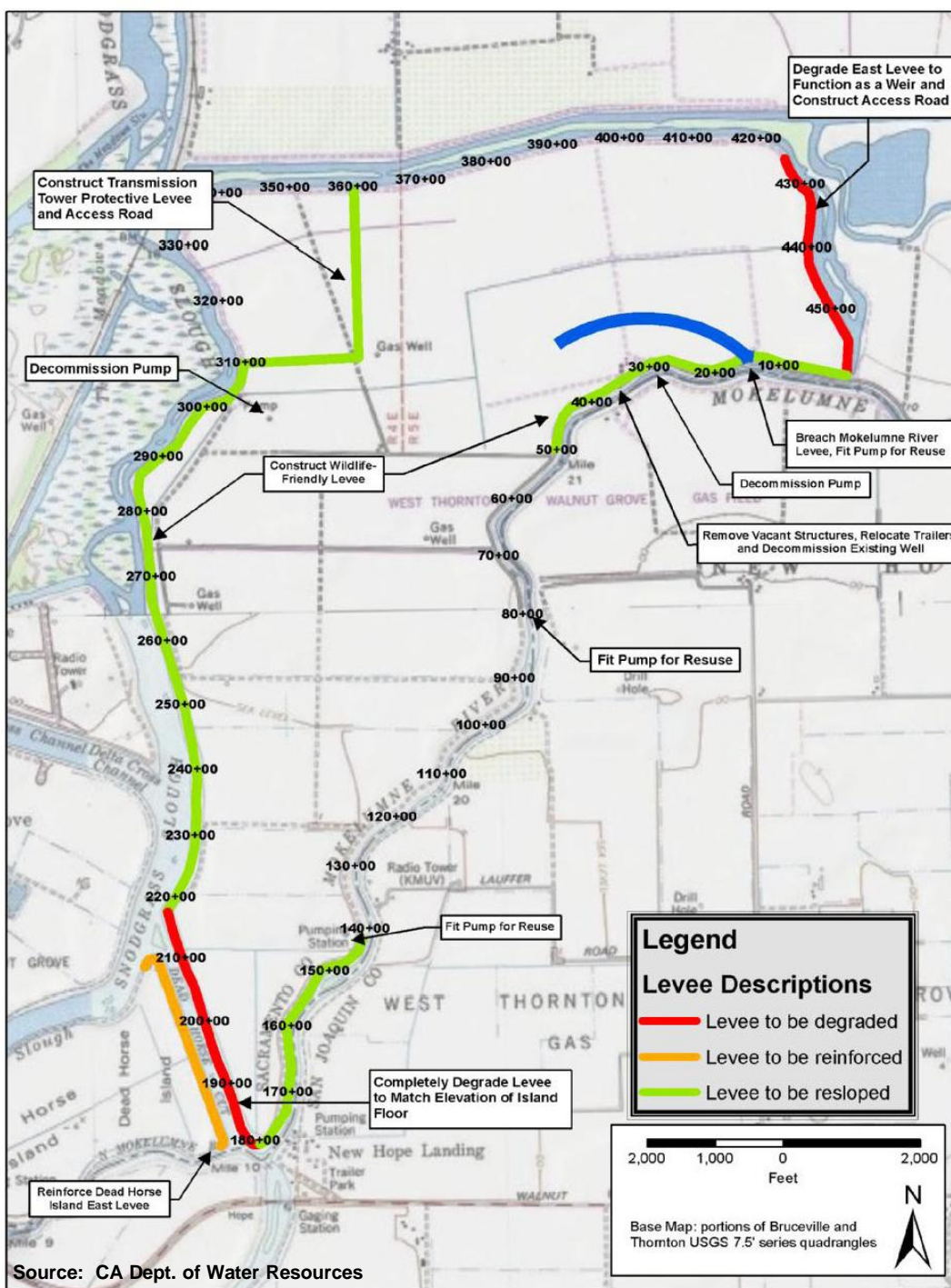
Flood Risk

- On-island – Low Risk
- Adjacent areas – Higher Risk



The Plan

- Degrade north-east levee to function as a weir
- Breach Mokelumne River levee to create tidal channel
- Degrade south levee to match elevation of island floor
- South-west portion of island restored to tidal marsh
- Habitat berms created along levees
- Levee improvements to adjacent island



Source: CA Dept. of Water Resources



BUILDING STRONG[®]

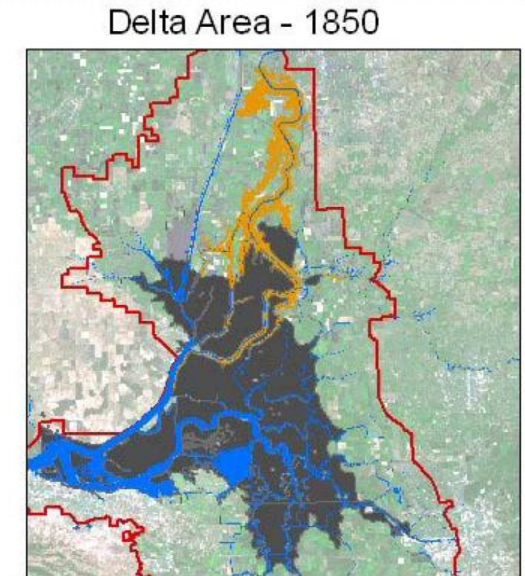
Objectives

Ecosystem

- Restore McCormack-Williamson Tract to:
 - Restore ecosystem *functions*
 - Benefit native species
 - Discourage invasive species

Flood Risk

- On-island
 - Restore to floodplain
- Adjacent areas
 - Reduce surge effect to minimize damages
 - Local benefits of restored floodplain



Develop concepts that can be applied throughout the Delta



Partnerships Make It Possible

Reclamation District 2110

- Corps' Non-Federal Partner
- Legal subdivision responsible for managing the tract



The Nature Conservancy

- Owns the land
- Relationship with Reclamation District 2110



California Department of Water Resources

- Finalized Environmental Impact Report (State EIS equivalent)
- Fund Reclamation District 2110 to partner with Corps



U.S. Army Corps of Engineers

- Authorized to implement and construct the project
- Partnering with Reclamation District 2110

