



# Setting Salinity Targets for Restoration in South Florida's Estuaries

National Conference on Ecosystem Restoration; Baltimore, MD; August 2011  
Susan Kemp (USACE), Patrick Pitts (USFWS), Greg Graves (SFWMD)

# Background

## Salinity target for restoration

- No agreement among stakeholders
- Lack of available tools
- Need for common physical or ecological “currency”



# Targets

## Types

- Best Professional Judgment (BPJ) targets
- Modeled targets

## Goal

- Pre-drainage
- Paleo-ecological
- Restoration

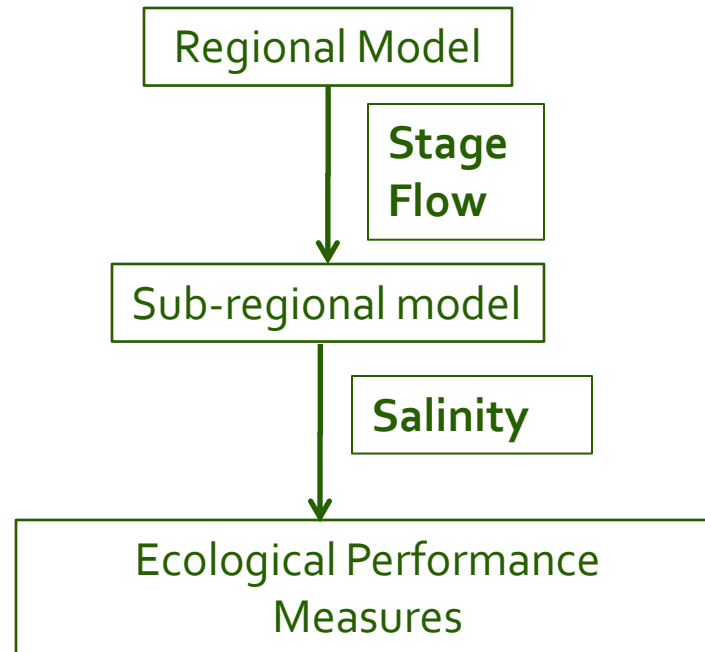


# Workshop

- Requested participants from all RECOVER stakeholders
  - 14 Federal, State, Local, and Tribal agencies
- Agreement on:
  - Tools used to set targets
  - Goal of target
- Outcome would feed into performance measure refinement



# General Flow of Models to Performance Measures



## **Biscayne Bay**

- Mangrove fish
- Pink shrimp and associated epifauna
- Seagrass

## **Florida Bay**

- Juvenile Seatrout
- Pink shrimp and associated epifauna
- Seagrass



**Ten Thousand Islands**

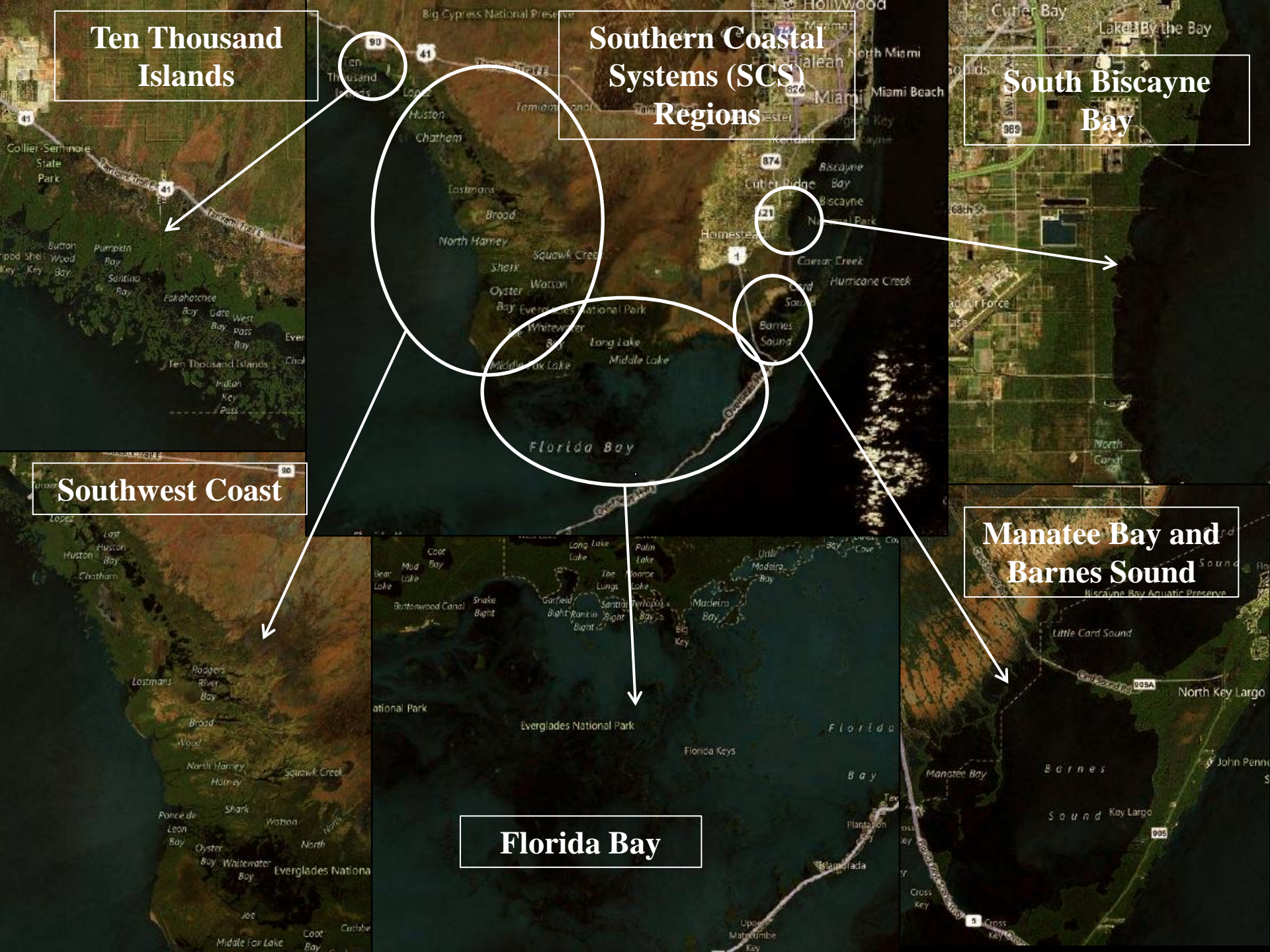
**Southern Coastal Systems (SCS) Regions**

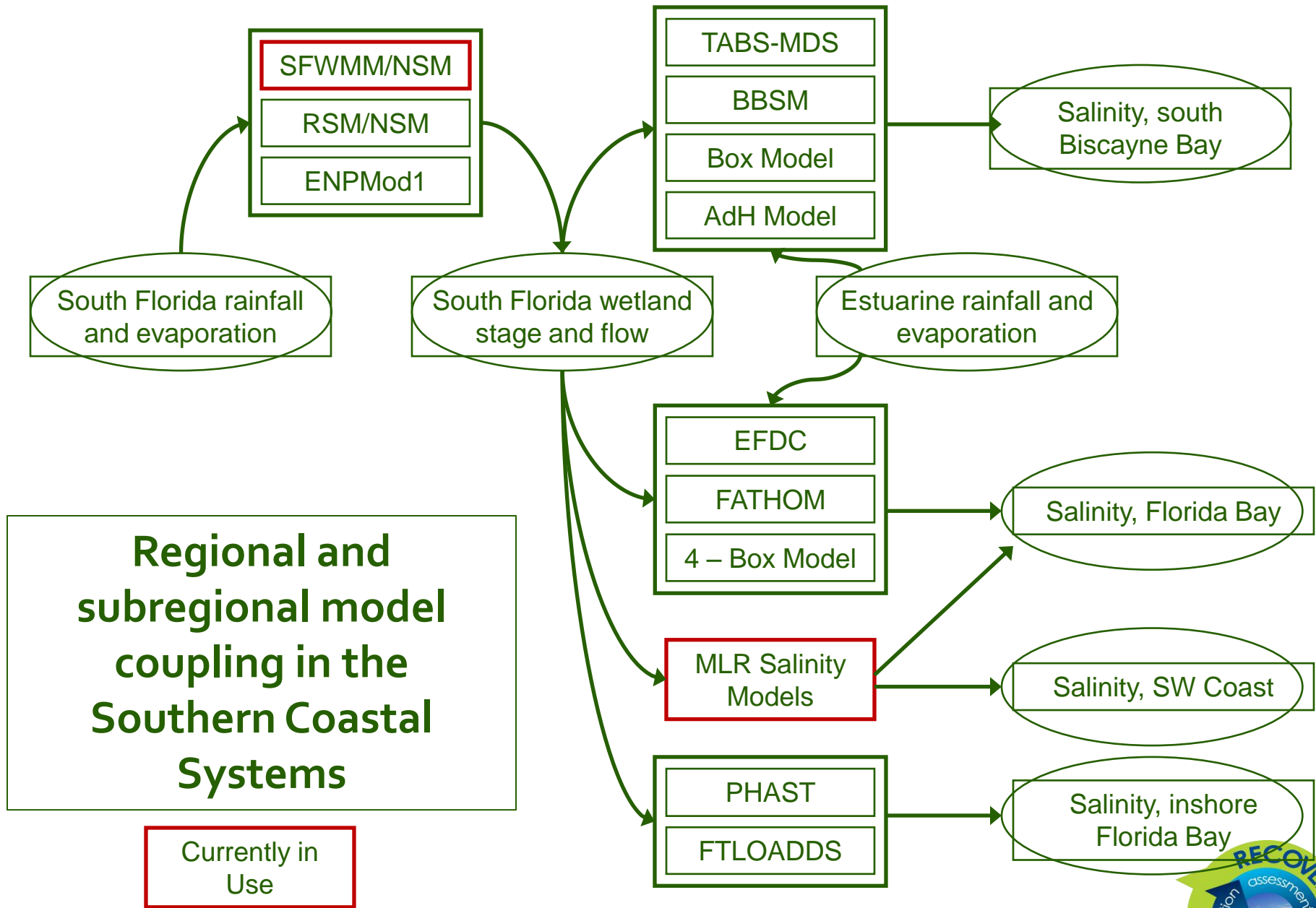
**South Biscayne Bay**

**Southwest Coast**

**Manatee Bay and Barnes Sound**

**Florida Bay**





# Performance Measure Metrics

## ➤ Regime

➤ **Salinity Envelope:** desired range for a given basin/embayment

➤ **Mean offset:** how far predicted/observed range is from target

➤ **Hypersalinity** – Frequency of hypersaline events





# Application

The same metrics are used for both evaluation and assessment purposes

- For **evaluation**: model output from the CERP regional model for different scenarios are compared to the target at site specific locations.
- For **assessment**: the site specific targets are compared to hi-resolution salinity data collected at those same locations.



# Regime Metric – Salinity Envelope

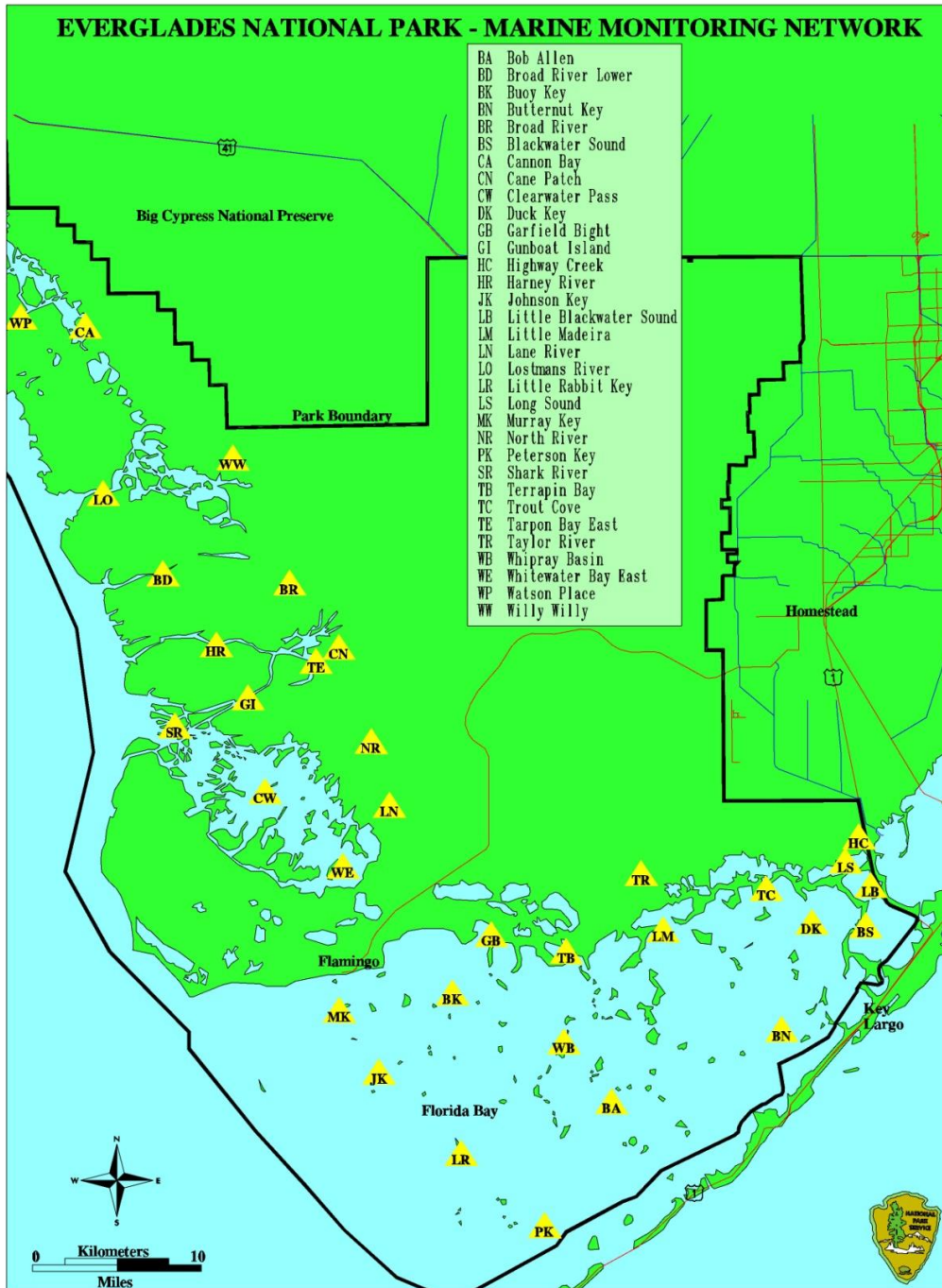
The target is the “mid-range” (25<sup>th</sup> to 75<sup>th</sup> percentile) of the full 36 year POR NSM/selected sub-regional model.

- **Evaluation** compares mid-range of target to the mid-range of the predicted CERP alternative.
- **Assessment** compares mid-range of target to observed data.
- **Score** = the percentage of the mid-range values per month that the observed /predicted data falls within the mid-range of the target.

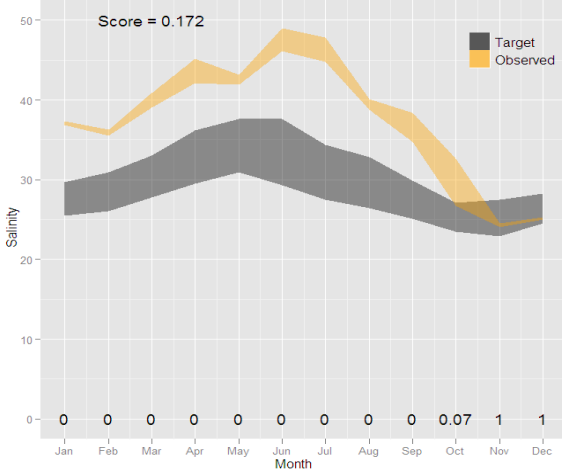


# EVERGLADES NATIONAL PARK - MARINE MONITORING NETWORK

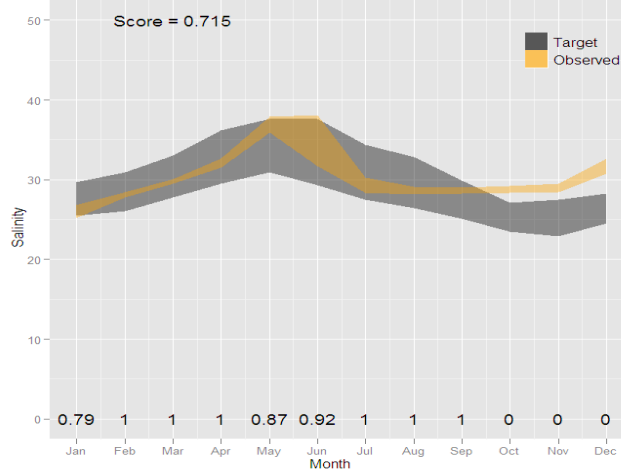
- BA Bob Allen
- BD Broad River Lower
- BK Buoy Key
- BN Butternut Key
- BR Broad River
- BS Blackwater Sound
- CA Cannon Bay
- CN Cane Patch
- CW Clearwater Pass
- DK Duck Key
- GB Garfield Bight
- GI Gunboat Island
- HC Highway Creek
- HR Harney River
- JK Johnson Key
- LB Little Blackwater Sound
- LM Little Madeira
- LN Lane River
- LO Lostmans River
- LR Little Rabbit Key
- LS Long Sound
- MK Murray Key
- NR North River
- PK Peterson Key
- SR Shark River
- TB Terrapin Bay
- TC Trout Cove
- TE Tarpon Bay East
- TR Taylor River
- WB Whipray Basin
- WE Whitewater Bay East
- WP Watson Place
- WW Willy Willy



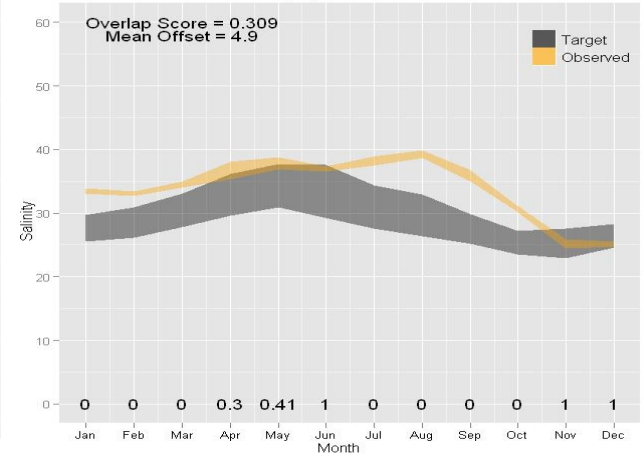
WB 2001



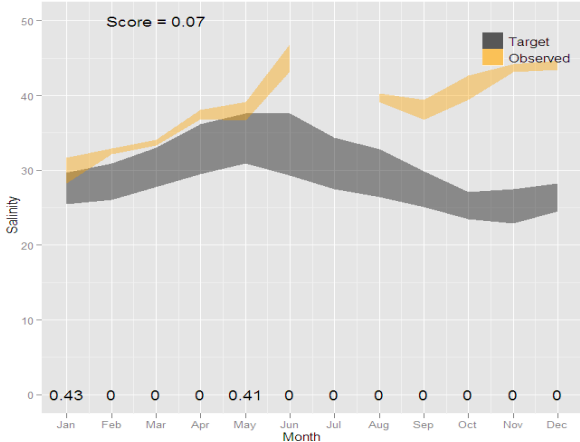
WB 2002



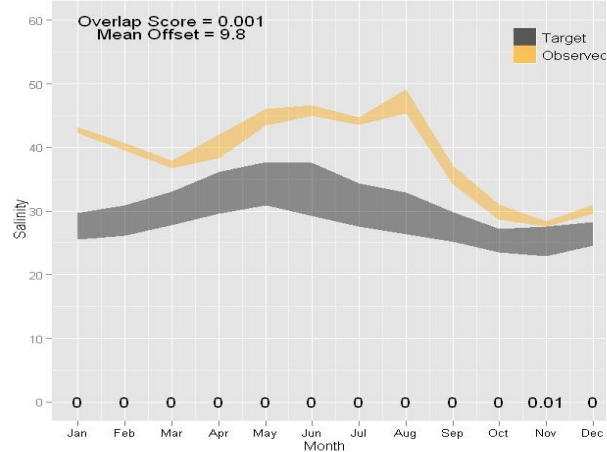
Whipray Basin 2003



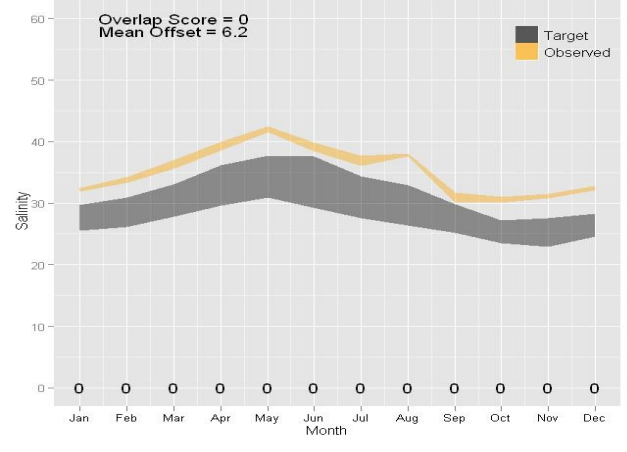
WB 2004



Whipray Basin 2005



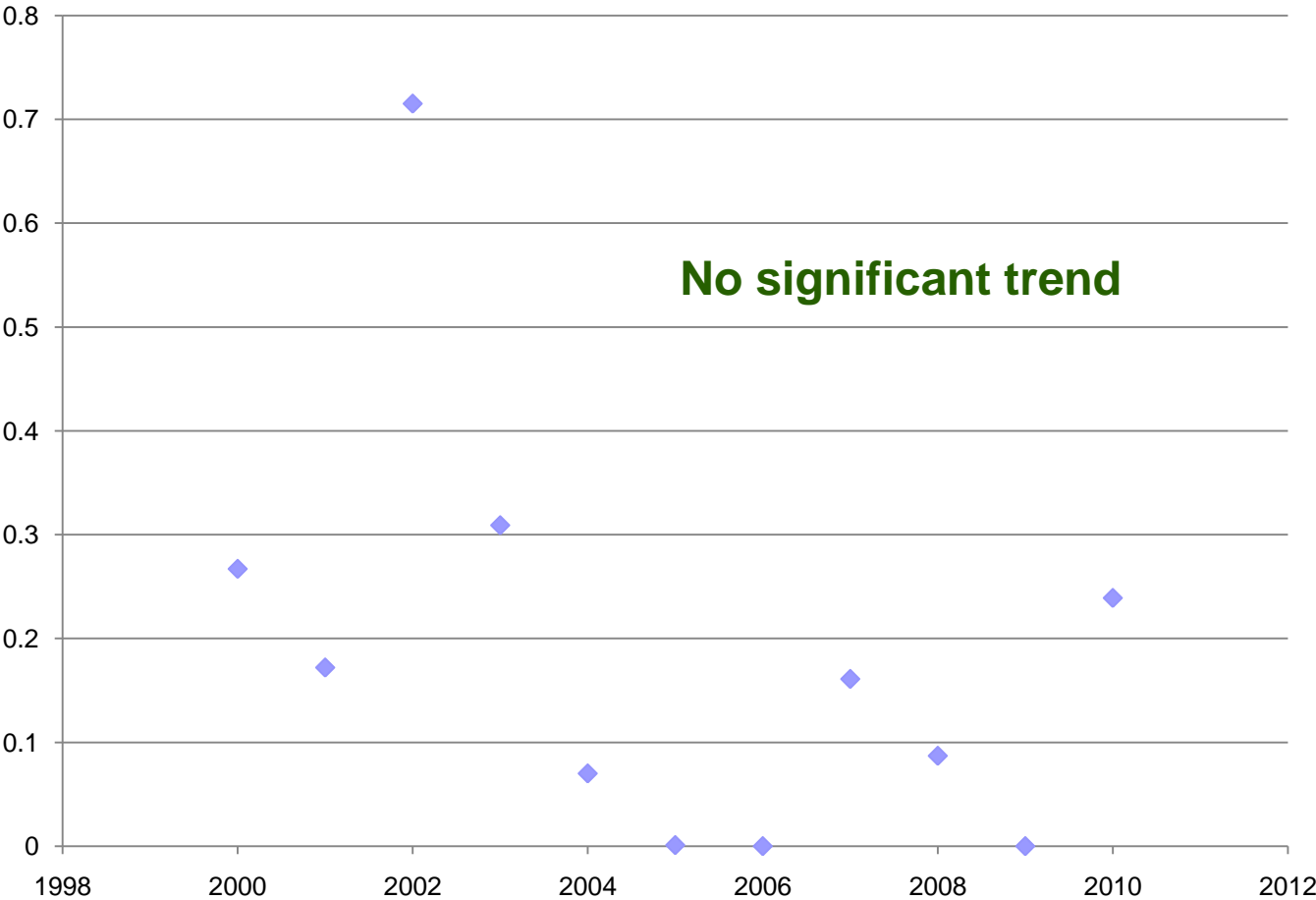
Whipray Basin 2006



# Annual results from 2001 through 2006

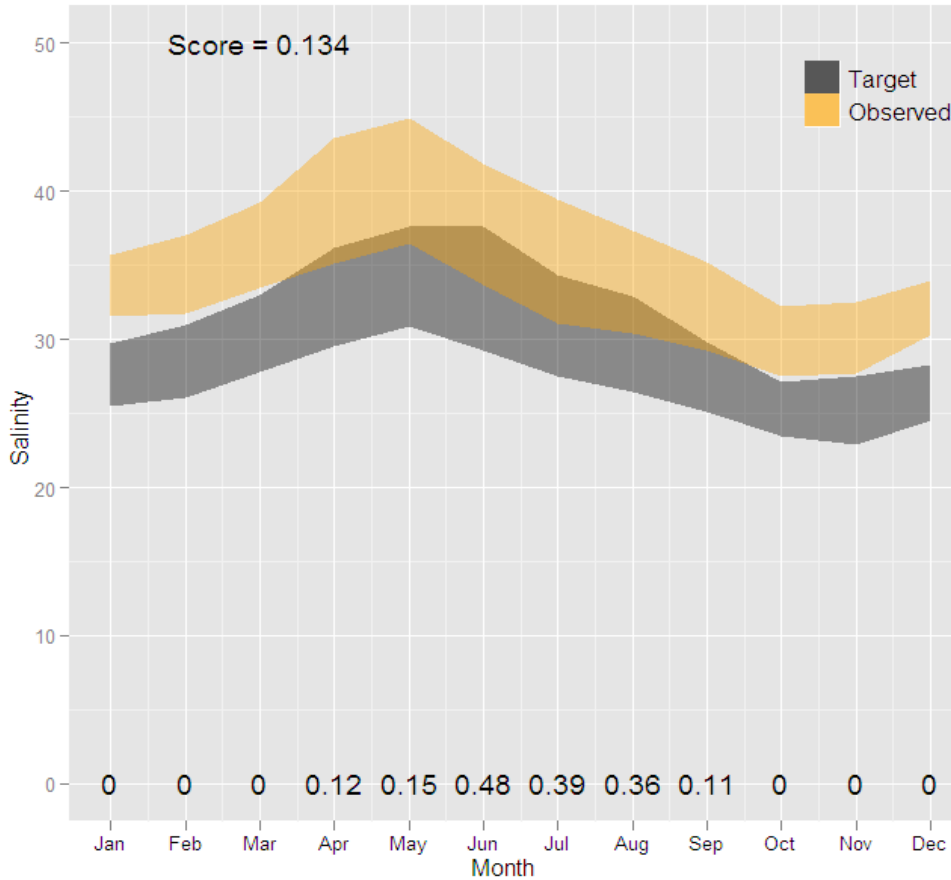


# Regime Annual Scores

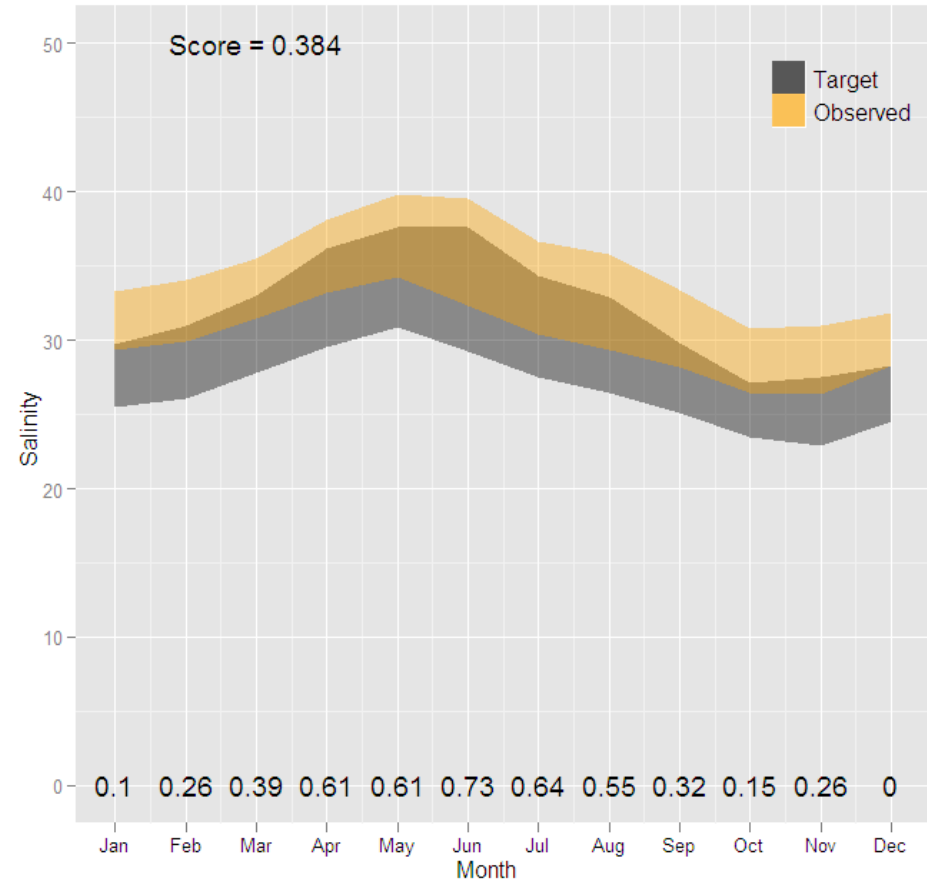


# Example of PM Regime Metric used for Evaluation of CERP Alternative

WB2050B3 vs Paleo-adj NSM



WBCERP0 vs Paleo-adj NSM



# Questions?

Susan.K.Kemp@usace.army.mil

Patrick\_Pitts@fws.gov

[www.evergladesplan.org](http://www.evergladesplan.org)

Shark River looking out into Florida Bay at moonrise

