

Governance in Ecosystem Restoration Initiatives: Legislative Perspective

Pervaze A. Sheikh
Specialist in Natural Resources Policy
Congressional Research Service

Disclaimer: The views expressed herein are those of the author and are not presented as those of the Congressional Research Service or the Library of Congress

What is CRS?

Congressional Research Service is a congressional agency

- CRS helps Members of Congress and their staff through each stage of the legislative process
- Provides balanced, unbiased, and confidential information.



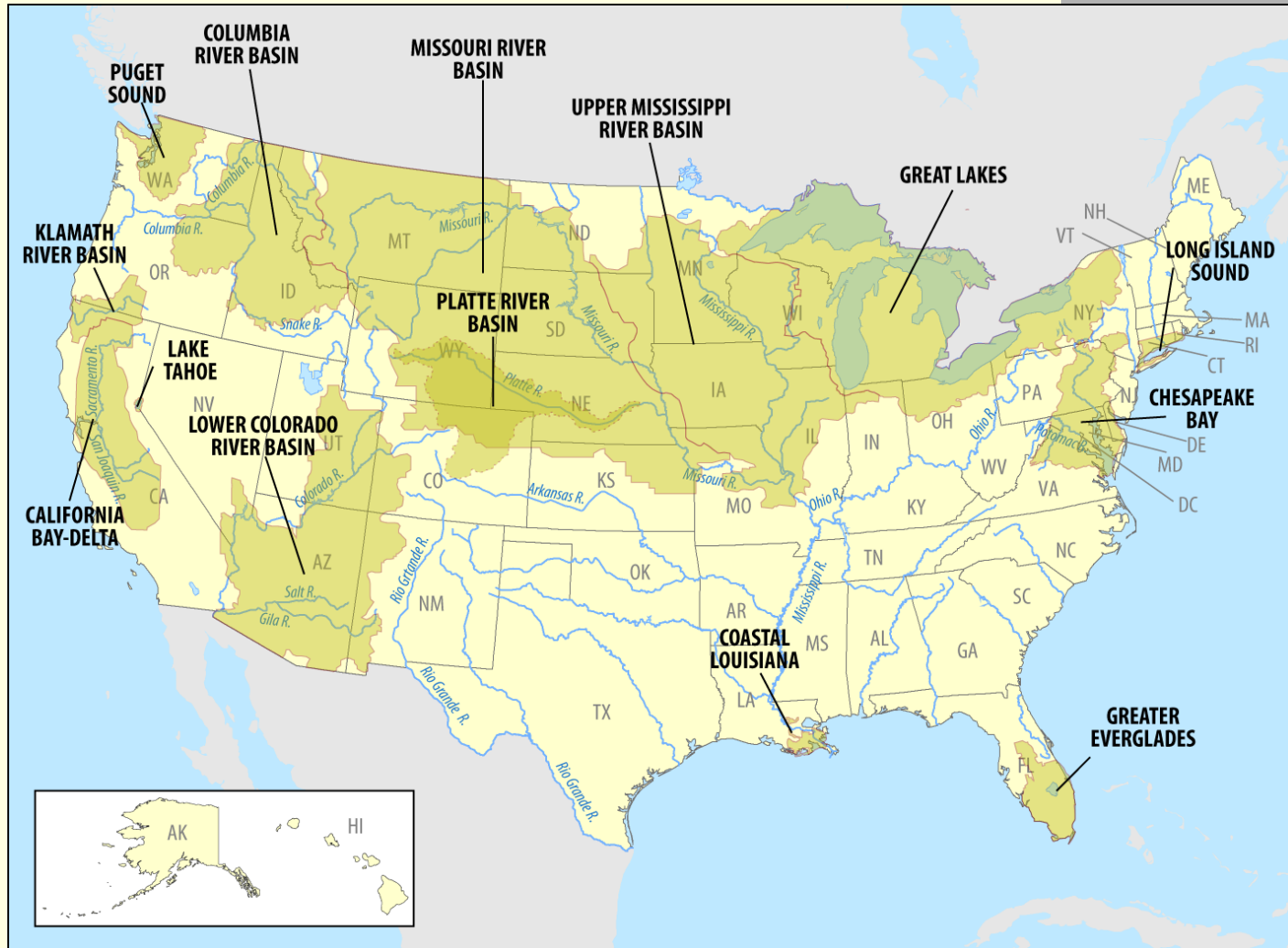
Ecosystem Restoration and Congress

- Congress provides appropriations, oversight, and authority
- Several issues form the basis of discussion in the legislative realm
- Several questions on how to create legislation for restoration initiatives.
- **Objective:** Analyze components of ecosystem restoration initiatives

Components in Ecosystem Restoration Initiatives

- Background information: program documents, geography
- Purpose/Mission
- Goals and objectives
- Decision-making structure
- Coordination/stakeholder involvement
- Implementation process
- Comprehensive plan or strategy
- Funding
- Monitoring
- Oversight and accountability
- Formal agreements
- Legislative authority
- Adaptive management
- Science
- Special policy mechanisms

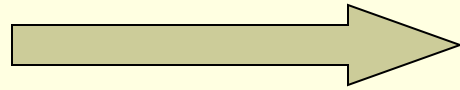
Ecosystem Regions Considered



Matrix of Components

Components	Chesapeake Bay	Great Lakes	Lake Tahoe
Coordination	The EPA is the lead agency for implementing the Chesapeake Bay Program (CBP), as authorized under the Clean Water Act (33 U.S.C. §1251 et seq). Etc...	The EPA coordinates with the Task Force and other agencies to implement federal activities aimed at restoring the Great Lakes. Etc...	Under P.L. 106-506, the Secretary of Agriculture is directed to consult with and seek the advice and recommendations of the Lake Tahoe Regional Planning Agency, Lake Tahoe Federal Interagency Partnership, etc...

Matrix



Analysis

-
- Chose selected components
 - Provide a set of approaches that are representative of initiatives
 - Pros and Cons of approaches
 - Legislative issues
 - Lessons learned

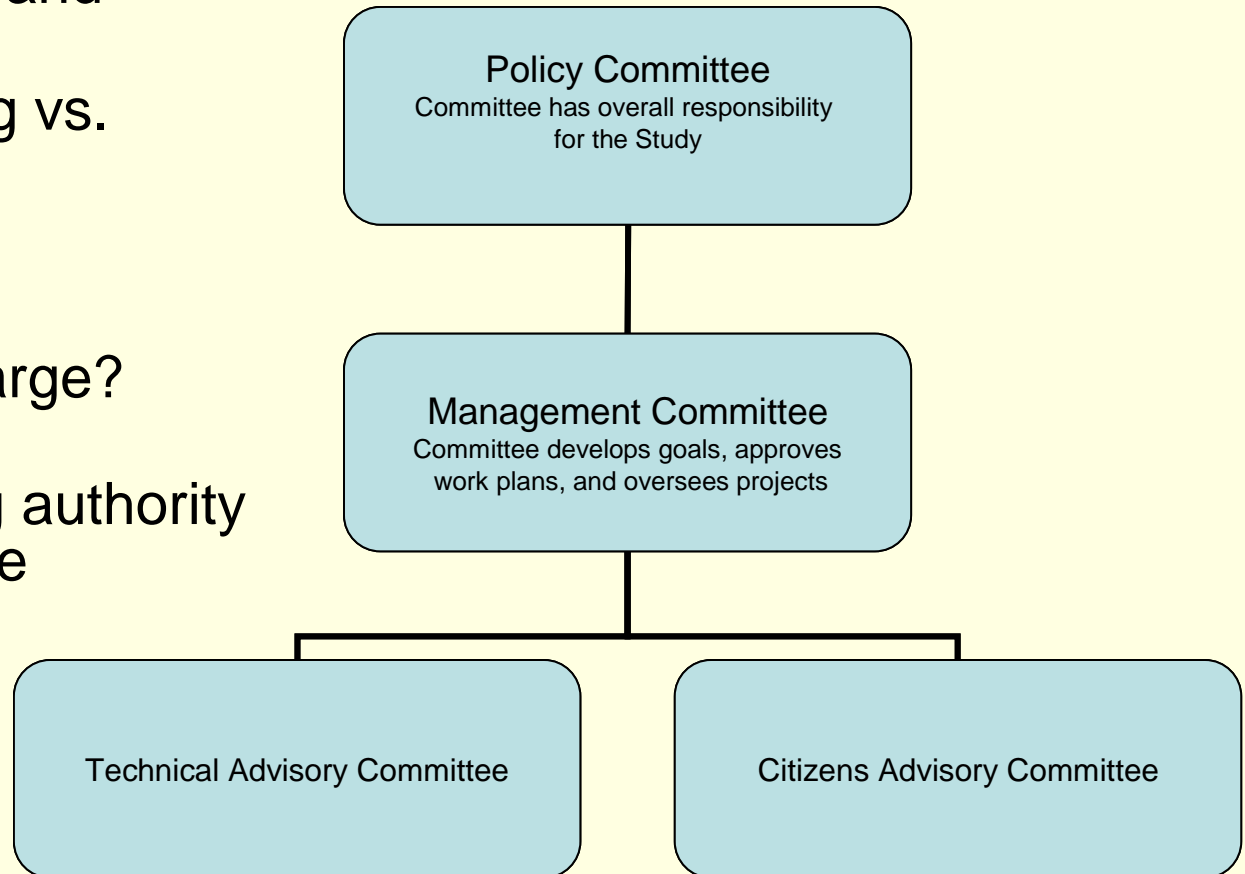
Components: Decision-making

Variation in decision-making roles and entities

Decision-making vs. Advisory

Issues

- Who is in charge?
- What is the implementing authority for guiding the program?



Long Island Sound
Restoration

Components: Regulatory Framework

Is the ecosystem initiative being driven, in part, by a regulatory framework?

- Endangered Species Act – Habitat Conservation Plans
- Clean Water Act - Total Maximum Daily Loads (TMDLs)

Issues

- How influential is the regulatory framework in restoration?
- Does the regulatory framework constrict restoration ?

Components: Funding

Federal and State funding –
Separate or Joint

Alternative methods:
Beneficiaries pays

Issues

- How to determine the right cost-share
- Tracking restoration funding
- Are we getting the biggest bang for our buck?



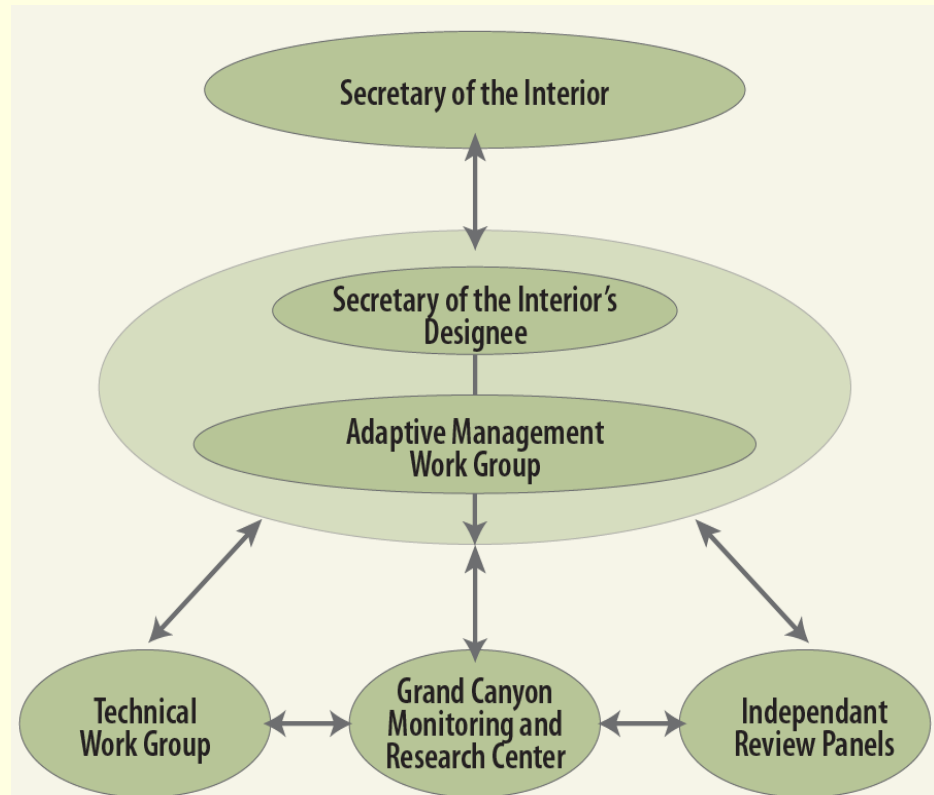
Components: Adaptive Management

Passive vs. Active

Formal vs ad-hoc process

Issues

- Process for implementing recommendations
- Balancing flexibility and certainty
- The role of stakeholders



Glen Canyon Adaptive Management Program

Questions ?

Contact:

Pervaze Sheikh

psheikh@crs.loc.gov

202-707-6070