

Skokie River Woods Wetland Restoration

Tony St. Aubin

- Ecological Consulting
- Native Plant Nursery
- Restoration Services
- Cultural Resource Management





Project Background

- County Stormwater Commission Wetland Violation Fund
- Illinois High-quality aquatic resource (based on FQI)
- Natural communities includes:
 - Shallow emergent marsh
 - Sedge meadow
 - Wet prairie
 - Red oak woodland
 - Swamp White Oak flatwoods
- Forest understory dominated by invasive trees/ shrubs



ILLINOIS STATE MAP
NOT TO SCALE



SOURCE: <http://earth.google.com/>

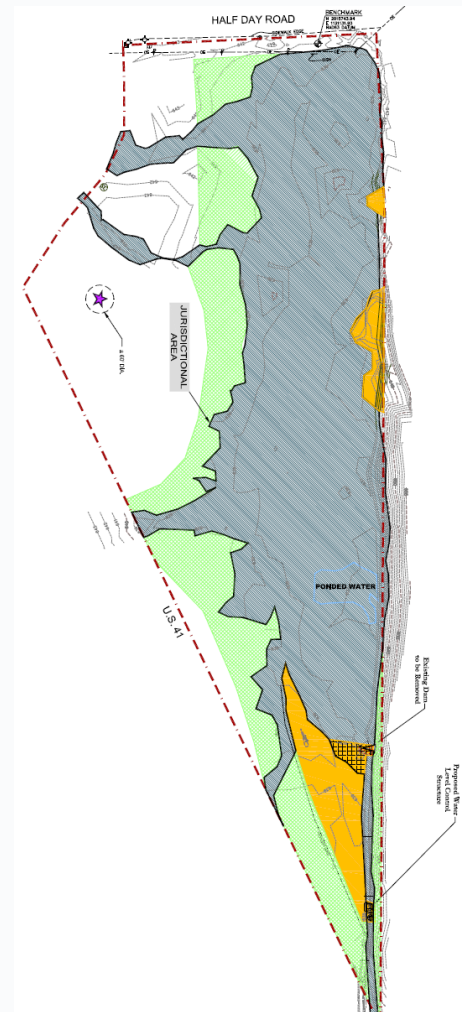
PROJECT LOCATION MAP

NOT TO SCALE



Project Goals

- Create 1.5 acres of additional wetland
- Enhance 15.0 acres of existing wetland
 - Increase native plant coverage
 - Expand habitat (Blue Spotted Salamander)
- Improve 5.0 acres of wetland buffer
 - Decrease invasive plant coverage



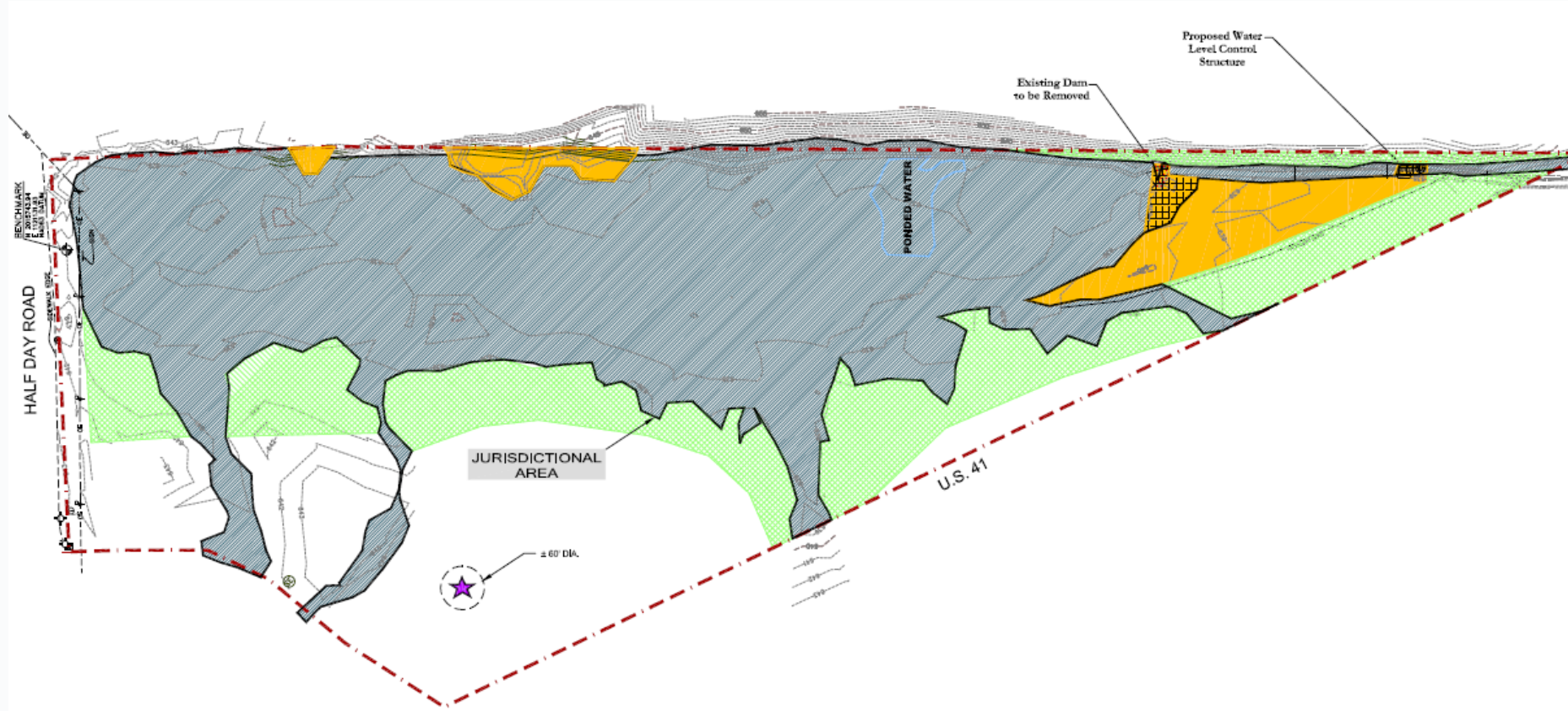


Project Scope

- Wetland construction design
- Federal and state permitting
- Surveys include:
 - Topographic
 - Construction layout
 - As-built
- 5,500 cy excavation and disposal
- Soil Amendments
- Installation of water control structure (Agridrain)
- Dam removal
- Sediment and Erosion Control
 - Silt fence
 - PAM
 - straw waddles
- 15.0 acres of woody invasive species removal
- 20.5 acres of herbaceous herbicide control
- 20.5 acres of native seeding/ planting
- 5 years of natural areas maintenance (selective herbicide, mowing)
- 5 years of monitoring (vegetative, hydrological)



Design & Permitting





Invasive Species Removal

Rhamnus frangula

- Cut-stump treatment
- Forestry mowing
- Garlon 3a herbicide

Typha angustifolia

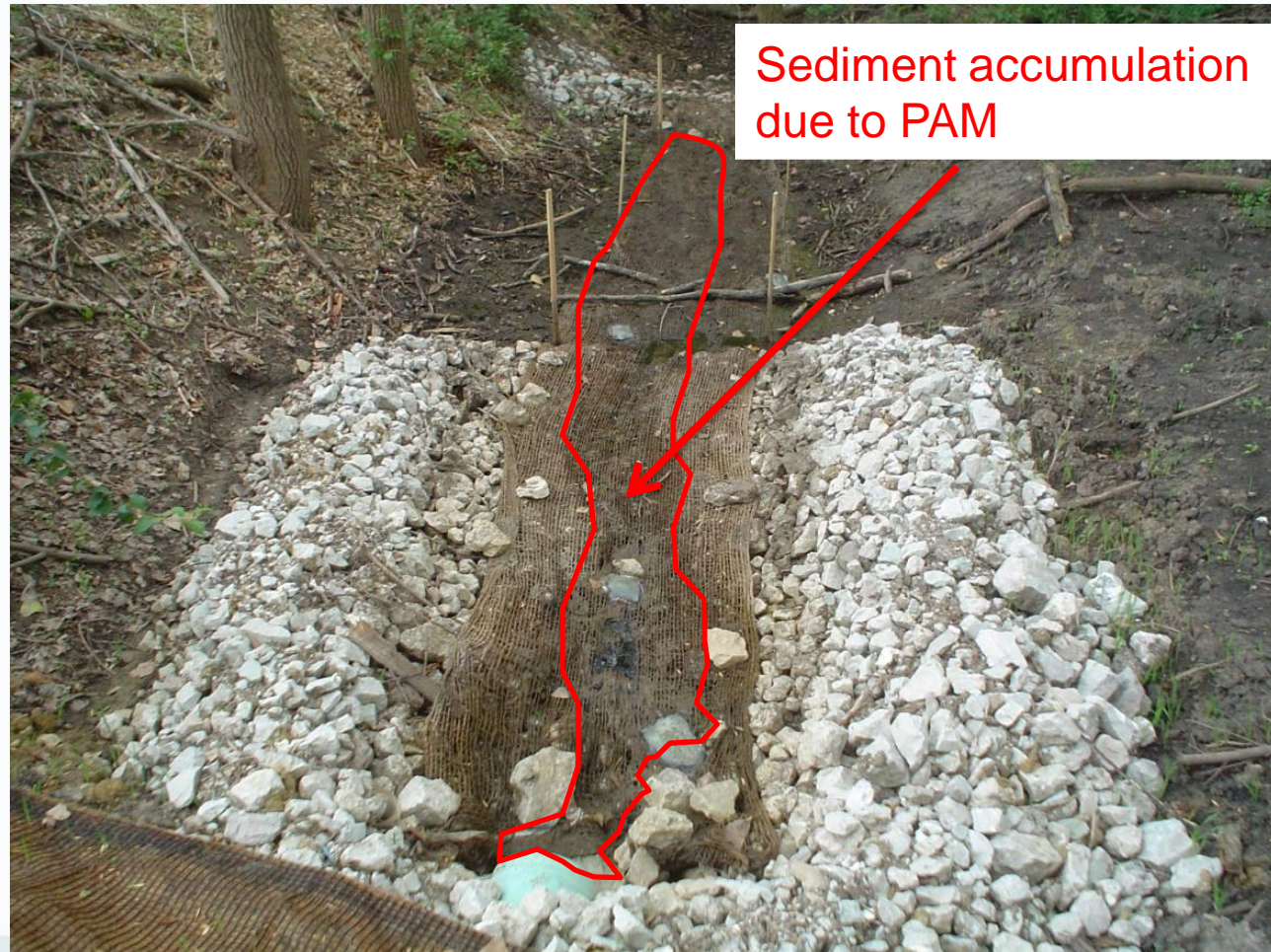
- Selective herbicide
- Aquaneat





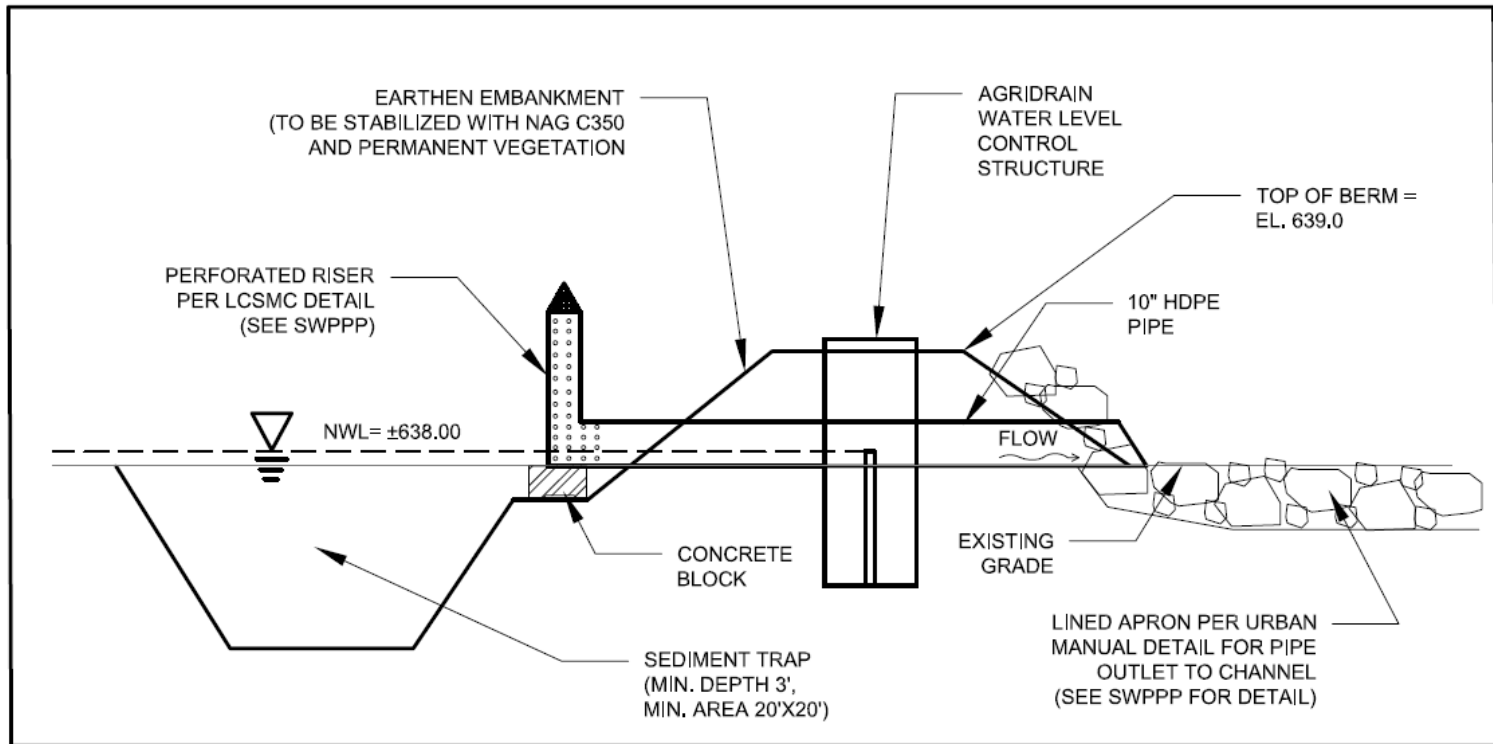
Sediment and Erosion Control

- Silt fence
- PAM
 - Water soluble polymers
 - Bind soil particles to floc logs
 - Due to extended soil exposure
- Straw Saddles/ Check Dams





Water Control Structure (Agridrain)



WATER LEVEL CONTROL STRUCTURE DETAIL

NTS





Excavation





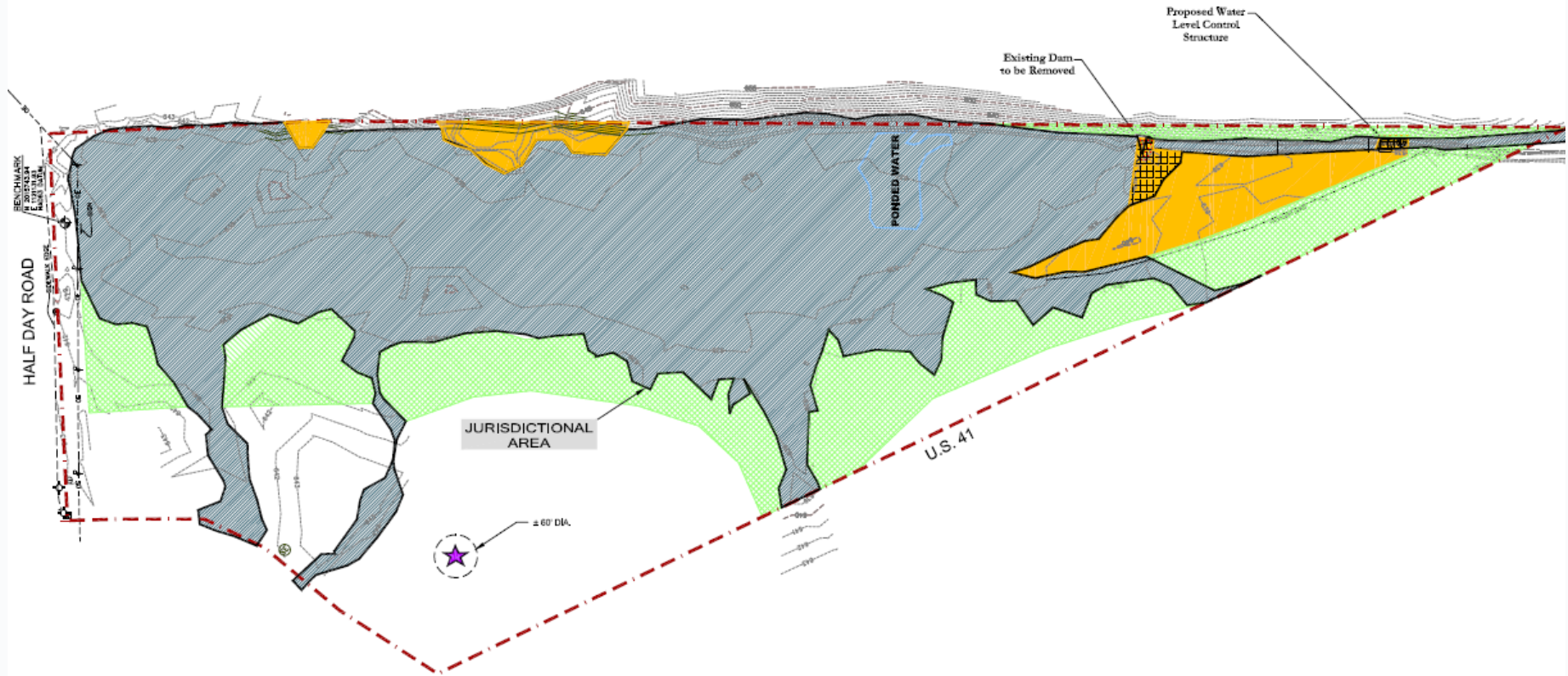


Cardno
JFNew









Shaping the Future







LEGEND

	PROJECT BOUNDARY
	ON-SITE JURISDICTIONAL AREA (± 13.90-ACRES) TO BE ENHANCED
	EXISTING GRADE
	WETLAND RESTORATION AREAS WHERE GRADING SHALL OCCUR (± 1.50-ACRES)
	Site 11-L-874 (AREA OF KNOWN CULTURAL ARTIFACTS)
	WETLAND IMPACT AREAS (± 0.13-ACRE)
	PROPOSED GRADE
	WETLAND BUFFER UPLAND RESTORATION AREA (± 5.0-ACRES)

NOTES

- 1.) IMPACTS ARE ASSOCIATED WITH MINOR GRADING ASSOCIATED WITH REMOVING EXISTING FILL/SPOILS, REMOVAL OF DAM, INSTALLATION OF ADJUSTABLE WATER CONTROL STRUCTURE, AND ADDRESSING EROSION, AND PROMOTING EXPANDED WETLAND HYDROLOGY.
- 2.) DRAWINGS ARE BASED ON CONCEPTUAL DRAWINGS PREPARED BY HEY AND ASSOCIATES, INC. MINOR ADJUSTMENTS IN THE FIELD MAY BE NECESSARY DURING IMPLEMENTATION OF THE PROJECT.
- 3.) BASE MAP PROVIDED BY WOOLPERT, INC.







Cardno
JFNew

Shaping the Future





Cardno
JFNew

Shaping the Future





Direct Additional Questions to:

Tony St. Aubin

Operations Manager, Northwest Region

tony.staubin@cardno.com

(708) 534-3450

www.cardnojfnew.com