



Mayra Ashton¹, Jennifer Báez¹, Matt Mitchell¹ and Nanette O'Hara²

²O'Hara Communications, LLC, Clayton, GA



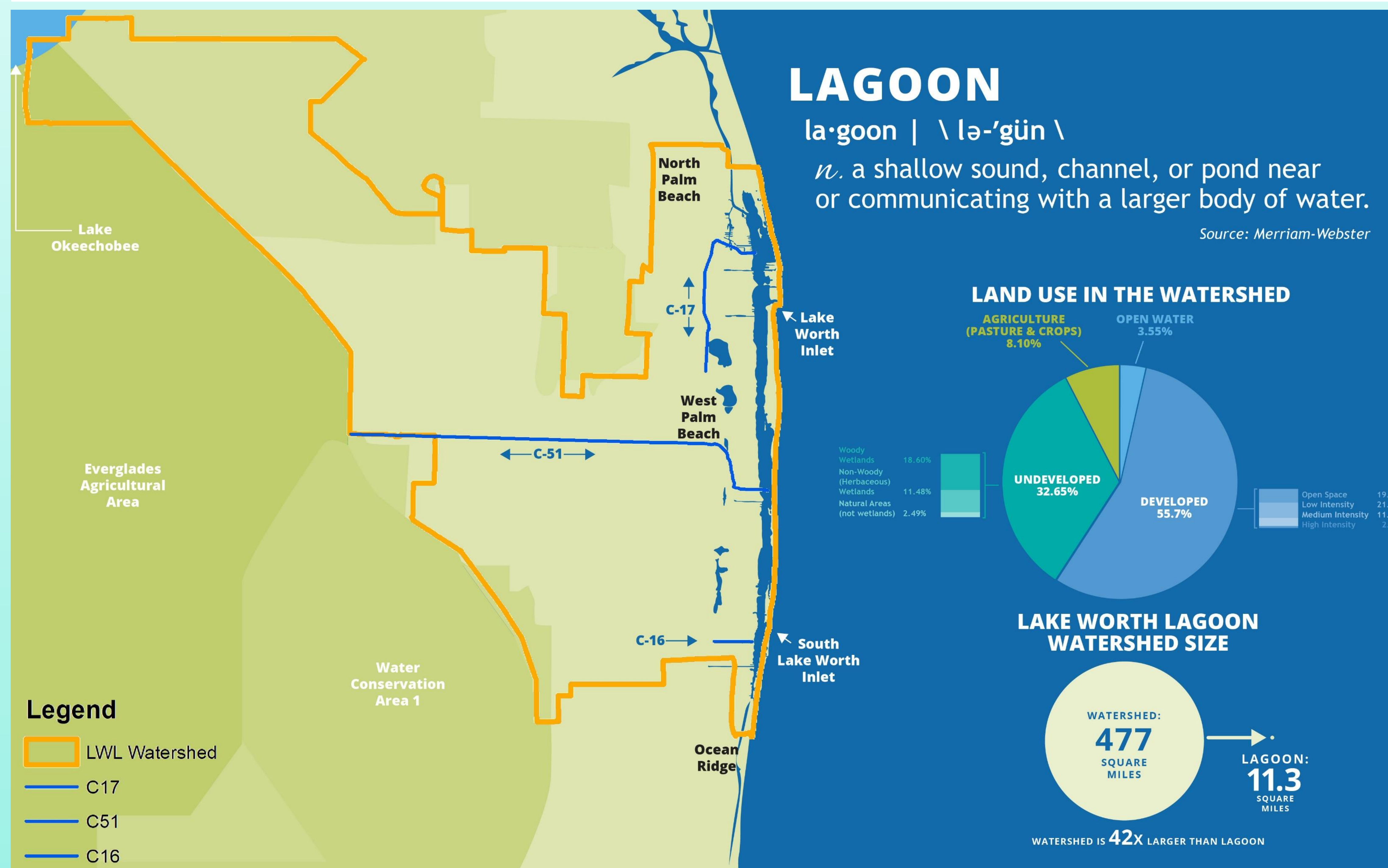
The Lagoon is bordered by 13 municipalities, from the Village of North Palm Beach in the north to the Town of Ocean Ridge in the south, but its watershed includes over 30 municipalities and unincorporated areas, in addition to 8 independent drainage or water management districts. There are close to 1 million residents that are part of the Lagoon's watershed and hence linked to the Lagoon.

Additionally, the County and Lake Worth Lagoon Initiative partners continue with long-term biological monitoring for oysters, seagrass, fisheries, birds and turtles, all linked to assessing the health and productivity of the Lagoon.

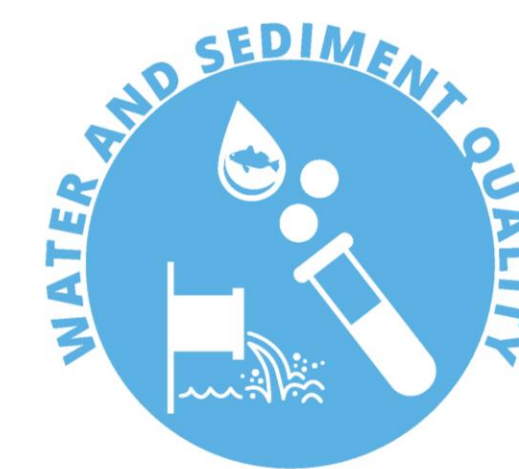


Stakeholders who took a 2020 online survey were asked to list adjectives that best describe the Lagoon. This Word Cloud shows the words they submitted, in the form of a spotted eagle ray—the mascot of the Lake Worth Lagoon.

Source: Merriam-Webster



The plan lays out 25 action plans that identify the management priorities for the Lagoon. The Plan presents achievable goals and actions for improving water quality, enhancing habitat, protecting fish and wildlife, preparing for a changing climate, and fostering public awareness and responsible enjoyment of the Lagoon.



WATER AND SEDIMENT QUALITY

WATER QUALITY	WASTEWATER
<p>WQ-1 Expand Water Quality Monitoring <i>*Renamed from 2013 Plan</i></p> <p>WQ-2 Develop a Watershed-Based Modeling Program <i>*NEW</i></p> <p>WQ-3 Implement Best Management Practices for Drainage Canals <i>*NEW</i></p> <p>WQ-4 Monitor and Assess Ways to Reduce Bacterial Contamination and Harmful Algal Blooms <i>*NEW</i></p> <p>WQ-5 Identify and Assess the Impacts of Emerging Contaminants <i>*NEW</i></p> <p>WQ-6 Manage Freshwater Inflows to Optimize Environmental Benefits <i>*NEW</i></p>	<p>WW-1 Assess and Reduce Occurrence of Sewer Overflows <i>*Renamed from 2013 Plan</i></p> <p>WW-2 Identify Priority Areas for Conversion of Septic Systems to Central Sewer <i>*Renamed from 2013 Plan</i></p> <p>STORMWATER</p> <p>SW-1 Reduce Stormwater Runoff from Urban Landscapes <i>*NEW</i></p> <p>SW-2 Expand Use of Green Infrastructure and Low Impact Development Practices <i>*Renamed from 2013 Plan</i></p> <p>SEDIMENT MANAGEMENT</p> <p>SE-1 Assess and Manage Sediment Loading <i>*Renamed from 2013 Plan</i></p>



HABITAT ENHANCEMENT AND PROTECTION

- HE-1 Create, Protect and Monitor Hardbottom Habitats **NEW*
- HE-2 Restore, Create and Protect Intertidal Habitats **Renamed from 2013 Plan*
- HE-3 Maintain and Expand Seagrass Habitats **Renamed from 2013 Plan*
- HE-4 Acquire Ecologically Significant Submerged and Intertidal Lands **Renamed from 2013 Plan*

FISH AND WILDLIFE
MONITORING AND PROTECTION

FW-1 Continue Implementing Palm Beach County's Manatee Protection Plan **Renamed from 2013 Plan*

FW-2 Continue Sea Turtle Monitoring **Renamed from 2013 Plan*

FW-3 Continue Fisheries Monitoring **Renamed from 2013 Plan*

FW-4 Manage and Monitor Shorebird Habitat **Renamed from 2013 Plan*

FW-5 Implement Remote Tracking Technologies for Fish and Wildlife Monitoring **NEW*



CLIMATE CHANGE AND SEA LEVEL RISE

CC-1 Conduct a Vulnerability Analysis of Resources at Risk from Climate Change **NEW*

CC-2 Improve Resiliency of Critical Habitats to Climate Change and SLR **NEW*



PUBLIC OUTREACH AND ENGAGEMENT

PO-1 Foster Public Awareness and Engagement **NEW*

PO-2 Promote Youth Education and Engagement **NEW*



PUBLIC USES OF THE LAGOON

PU-1 Ensure Adequate and Appropriate Public Access to the Lagoon *NEW

15 FACTS ABOUT THE PALM BEACH WATERSHED

- WATERSHED X TIMES LARGER THAN LAGOON: 42
- SQUARE MILES OF WATERSHED: 477
- NUMBER OF MAJOR FRESHWATER DRAINAGE CANALS: 3
- NUMBER OF INLETS: 2
- MAX WIDTH IN MILES: .5
- MILES LONG: 20
- PARTS PER THOUSAND IN SALINITY VARIATION: 1-35
- SPECIES OF BIRDS: 100+
- SPECIES OF FISH: 250+
- NUMBER OF MUNICIPALITIES + UNINCORPORATED AREAS IN WATERSHED: 30
- POPULATION OF PALM BEACH COUNTY: 1.5 MIL
- % OF SHORELINE ARMORED BY SEAWALLS: 70%

Lake Worth Lagoon is a unique urban estuary of significant ecological and economic value. A 2019 Economic Valuation study estimated the value of recreational uses and business activities related to the Lagoon at \$813.9 million per year¹.

The successful implementation of the action plans and specific strategies identified for management of the Lagoon, including restoration of water quality, protection of fish and wildlife and enhancement of its unique estuarine habitats requires coordinated efforts from all of the agencies with management responsibilities, including local, state, regional, and federal entities as well as the stakeholders and community that work, live and enjoy the natural resources found throughout the Lagoon and its watershed.

It is crucial to work towards revitalizing and maintaining this important estuary for the long term not only for the diverse environmental and biological resources found here but also for the vast quality of life, recreational and economic benefits the Lagoon provides to the residents and visitors to this region.

ACKNOWLEDGEMENTS

- Funding provided by Palm Beach County Board of County Commissioners.
- Plan review, comments & feedback provided by Lake Worth Lagoon Initiative Partners & Stakeholders.
- Writing & design provided by O'Hara Communications & Bazany Design.

1 Economic Valuation of Lake Worth Lagoon, Palm Beach County, FL. PFM Group Consulting LLC. 2019.