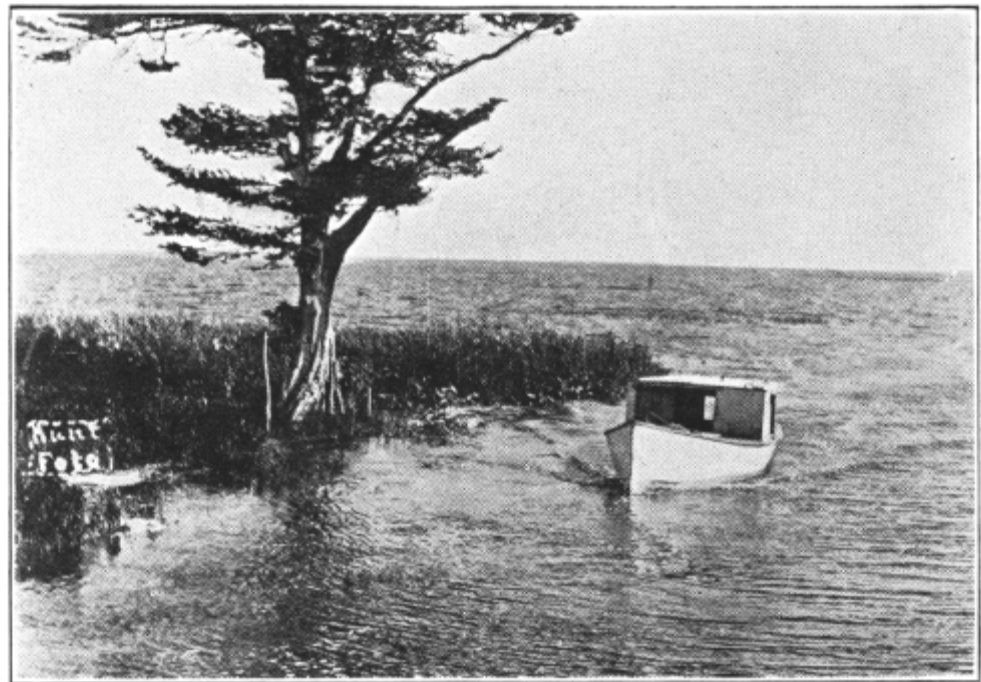


Lake Okeechobee: Historic Assessment (or an Environmental History)

- **Key Points**

- **Predrainage Lake stages: 18 – 21 ft (NGVD)**
- **Predrainage Lake shoreline: largely sawgrass plains = a relatively long hydroperiod**
- **Large fluctuations in lake levels since 1913, even with established regulation schedules**

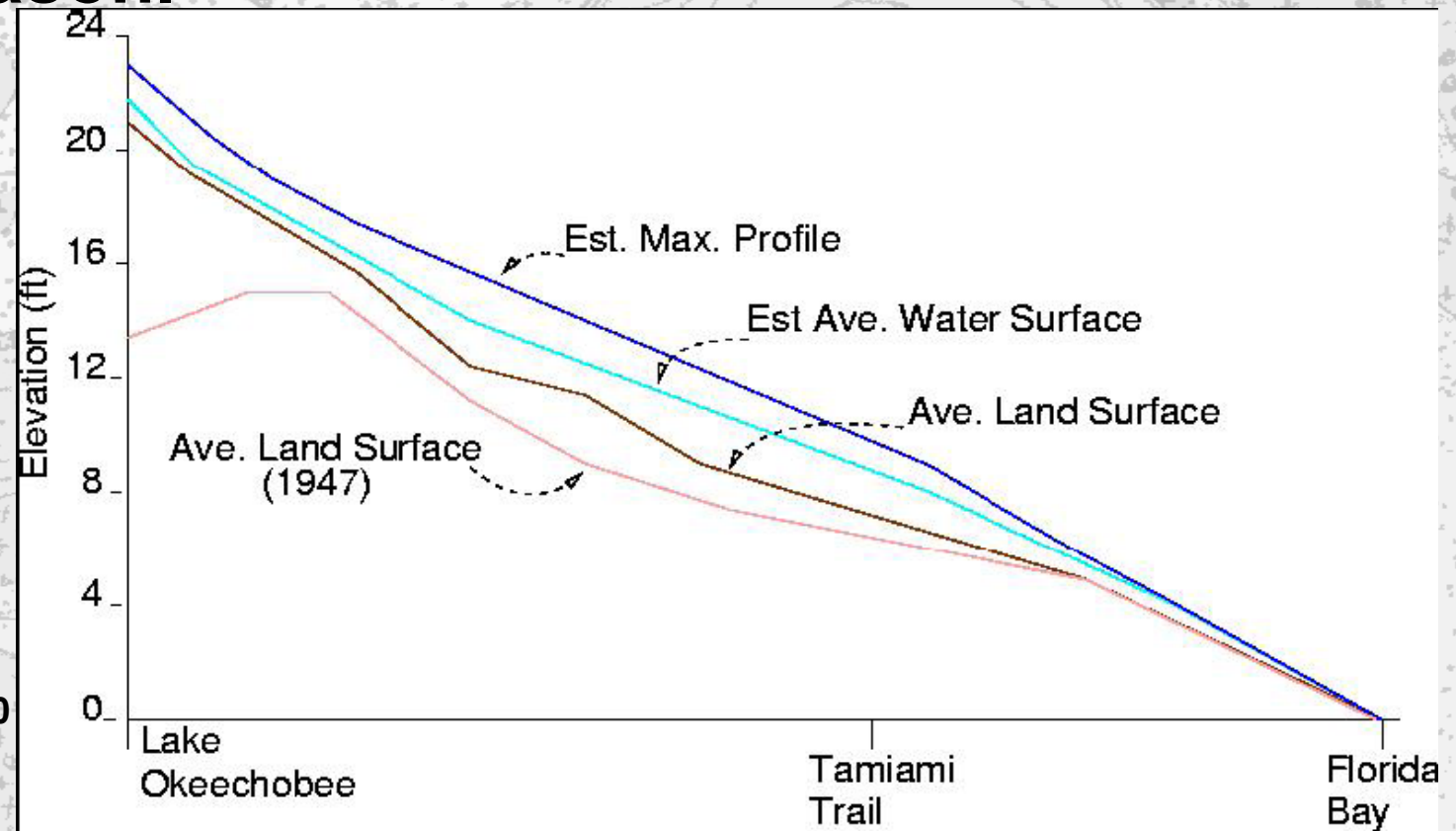


OUTLET OF LAKE OKEECHOBEE IN 1911.

Source: McVoy et al. (2005),
reproduced from Blatchley (1932).

Historic Functionality

- Historically, high lake stages provided hydraulic head to maintain persistent flows downstream to Everglades. This was especially important during the dry season.



Source: Adapted
from USACE, 1960

Panel Discussion Conclusions

- Need to consider restoring Lake's historic storage function, BUT
- Need to clean up the Lake before deciding upon storage options, AND
- Need to open up system in south in order to move flows through Everglades and to Florida Bay, BUT
- Timing of flows is critical