

Nutrient Storage and Transport Processes on Ranchlands in the Northern Everglades: Consequences for Greater Everglades Restoration

Patrick J. Bohlen, Sanjay Shukla, Mark, W. Clark



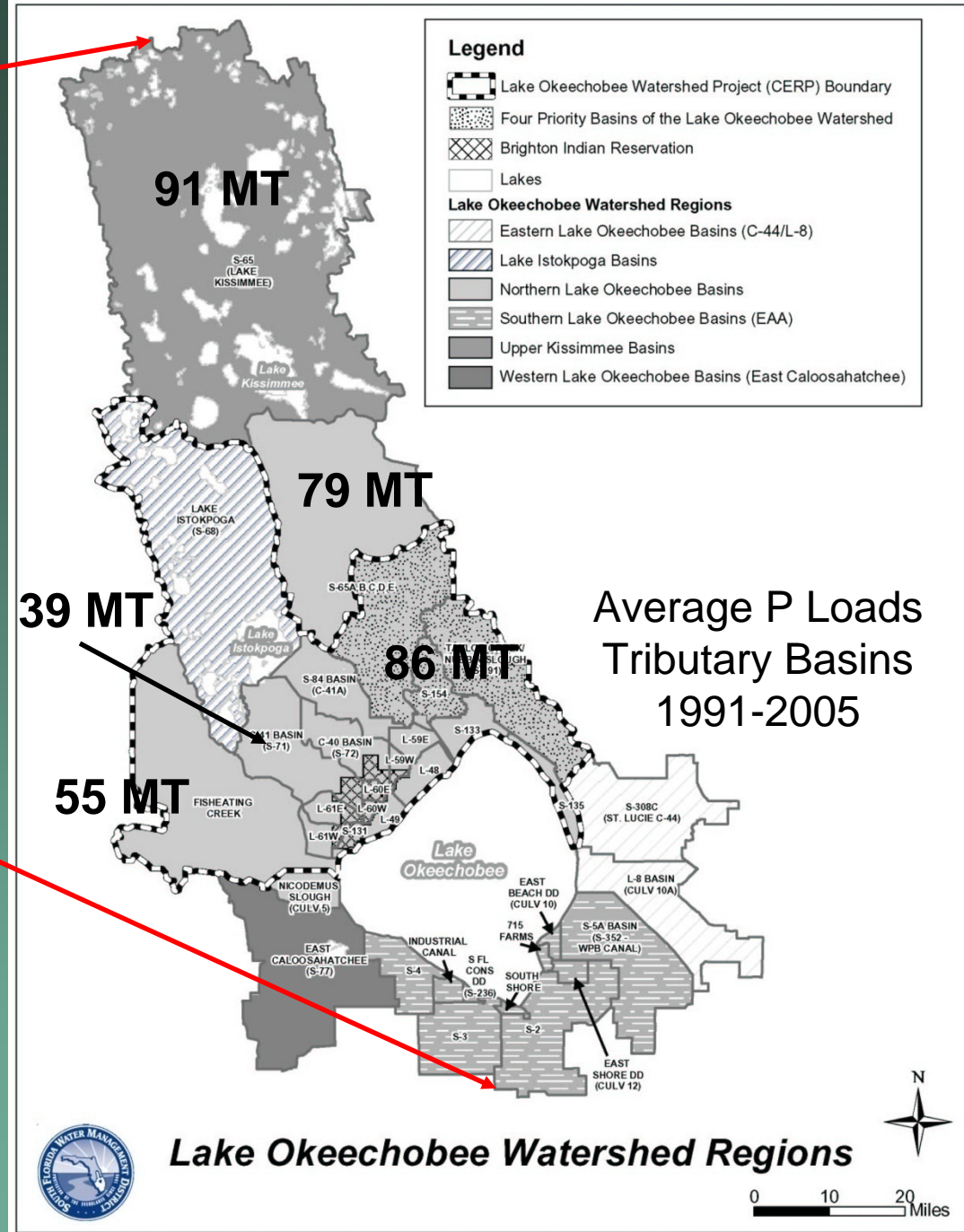
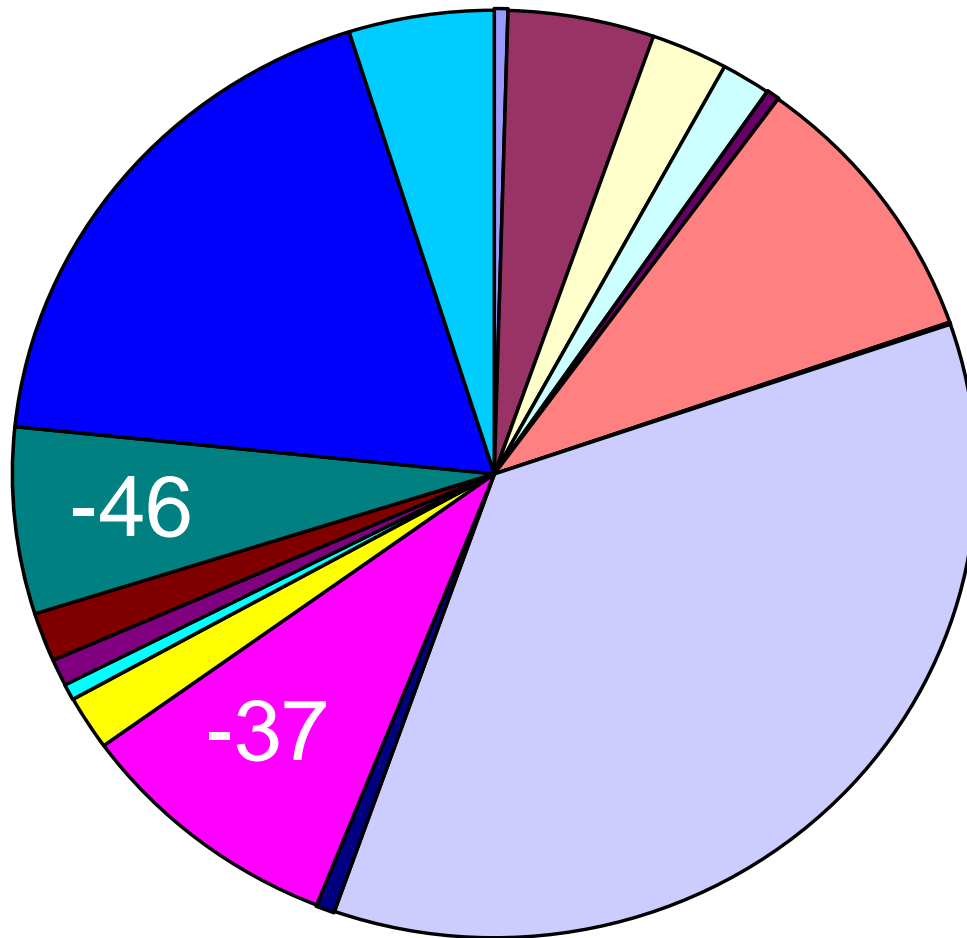




Photo by: Carlton Ward

Ranches are the Major Land Use in the Northern Everglades

Land Use Lake Okeechobee Watershed



- Abandoned dairy
- Citrus
- Commercial forestry
- Dairy
- Field crop
- Forested upland
- Golf course
- Improved pasture
- Ornamentals
- Rangeland
- Residential
- Row crops
- Sod farm
- Sugarcane
- Unimproved pasture
- Wetland
- Water and other land uses

From Hiscock et al. 2003



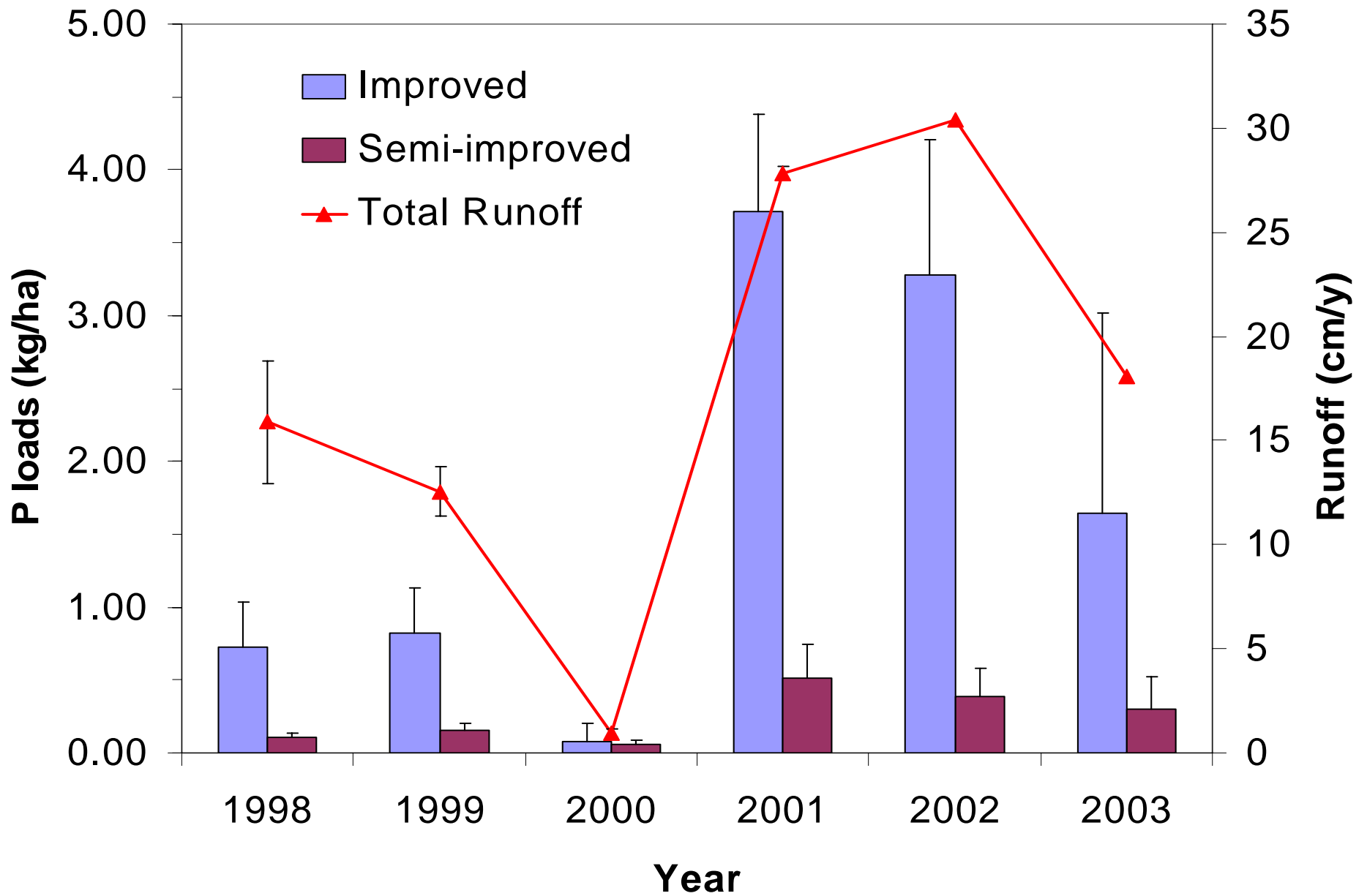
© alex calzadilla 2002



© alex calzadilla 2002

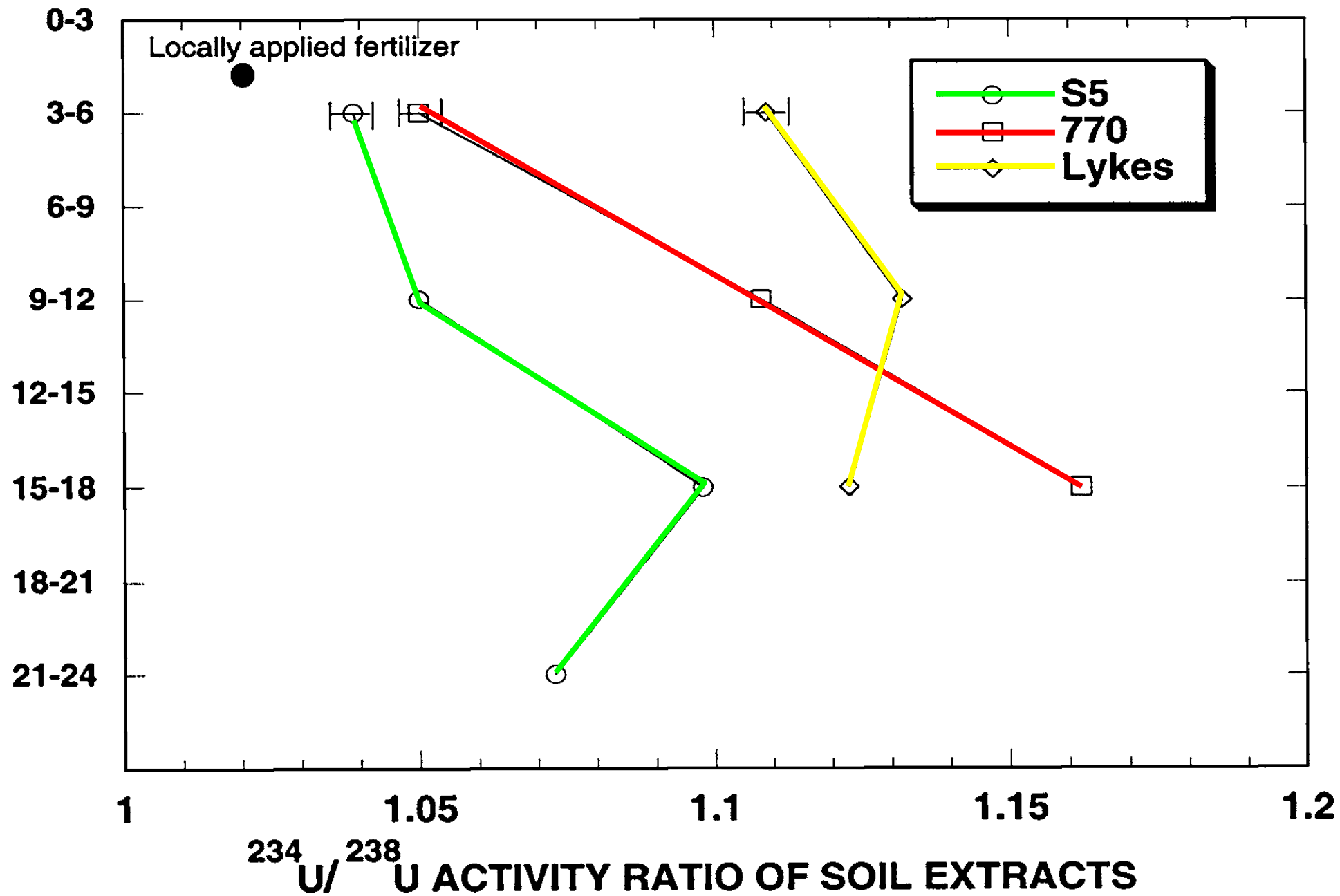






Also more SRP in the improved pasture runoff, ~70% vs. ~40%

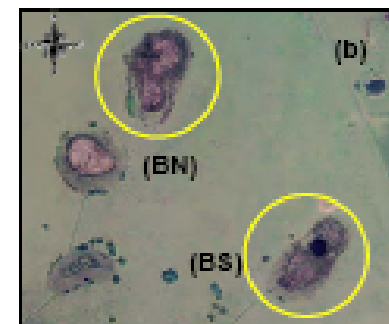
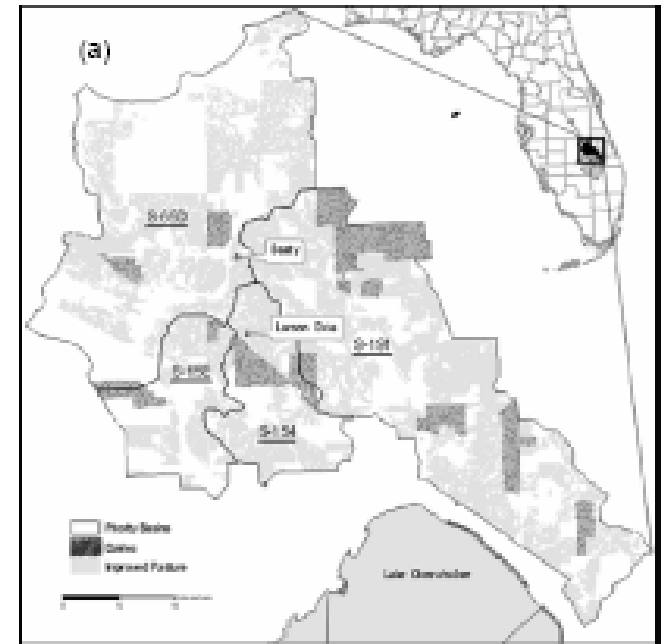
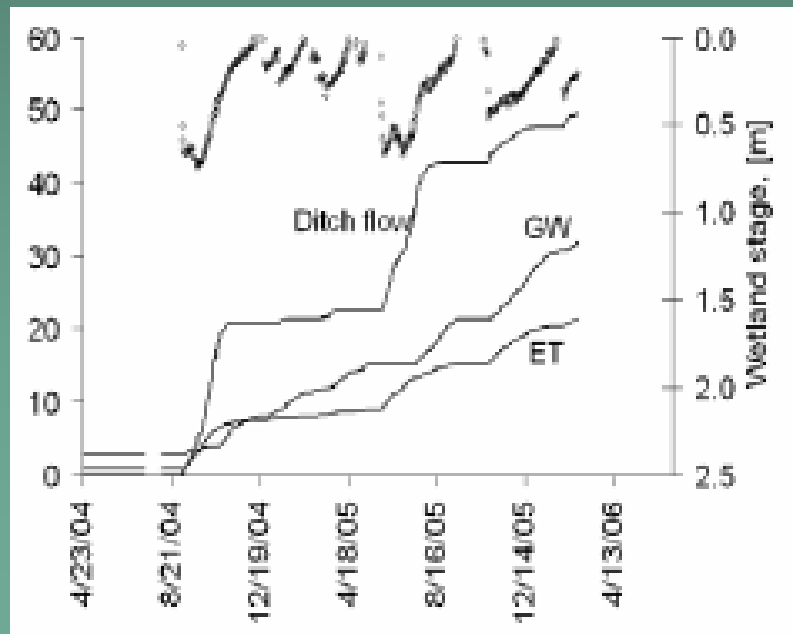
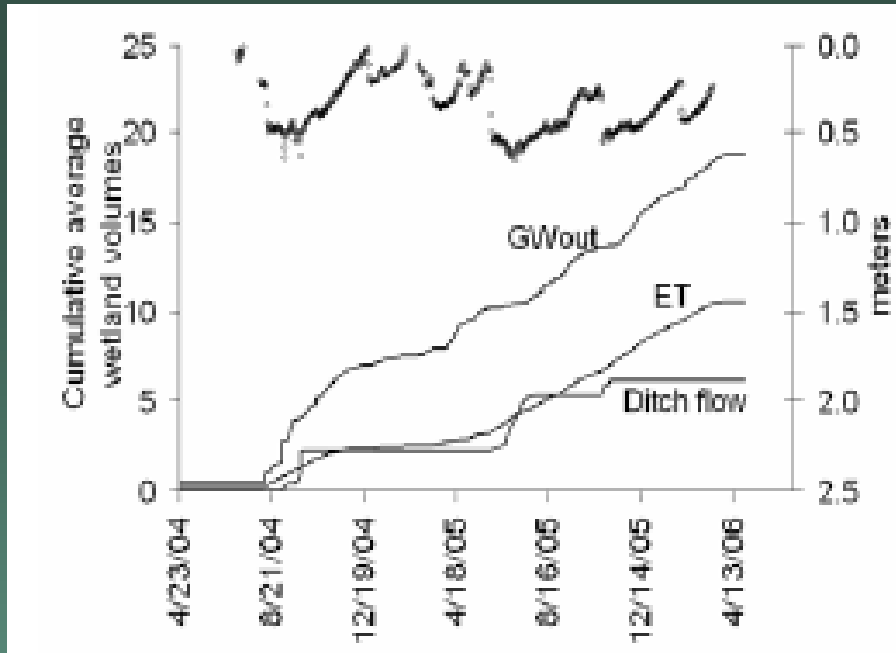
DEPTH INTERVAL (CM)





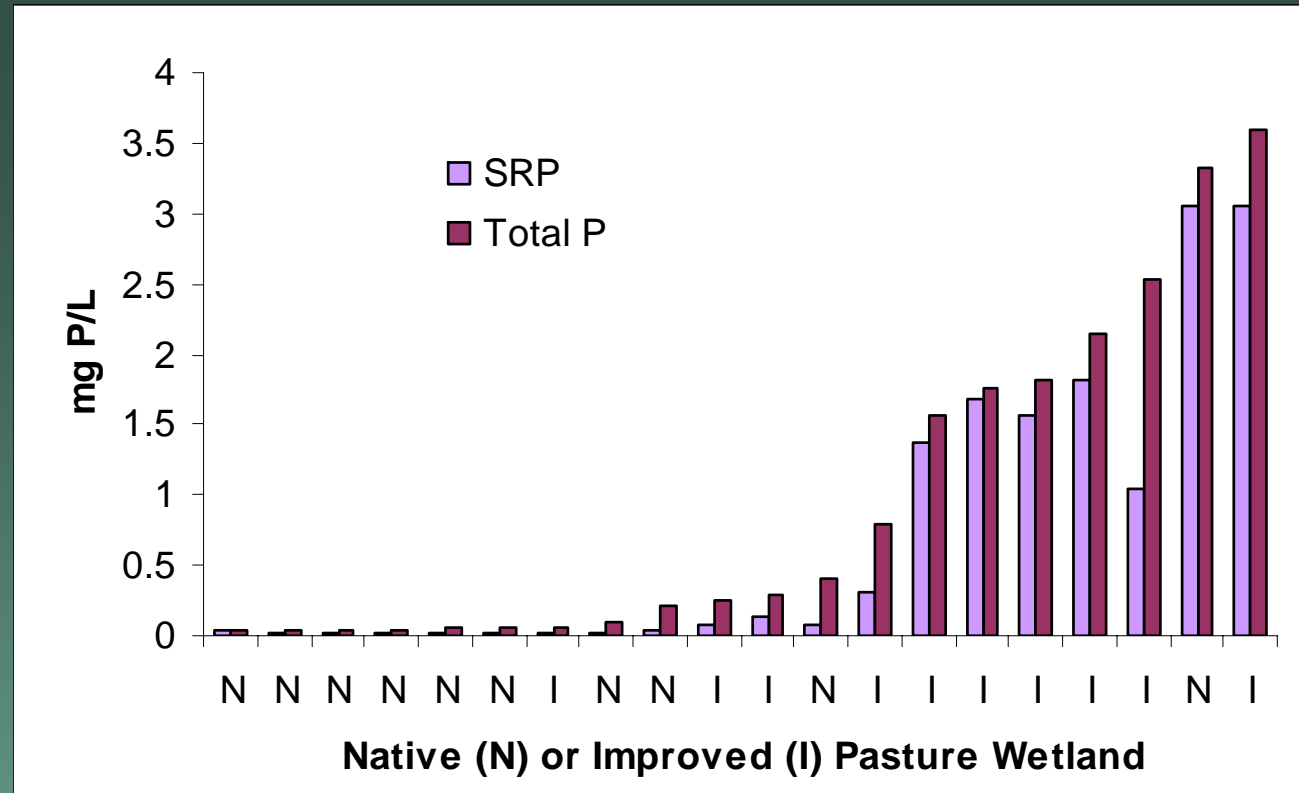


UF-IFAS Isolated Wetland Studies -- Hydrology



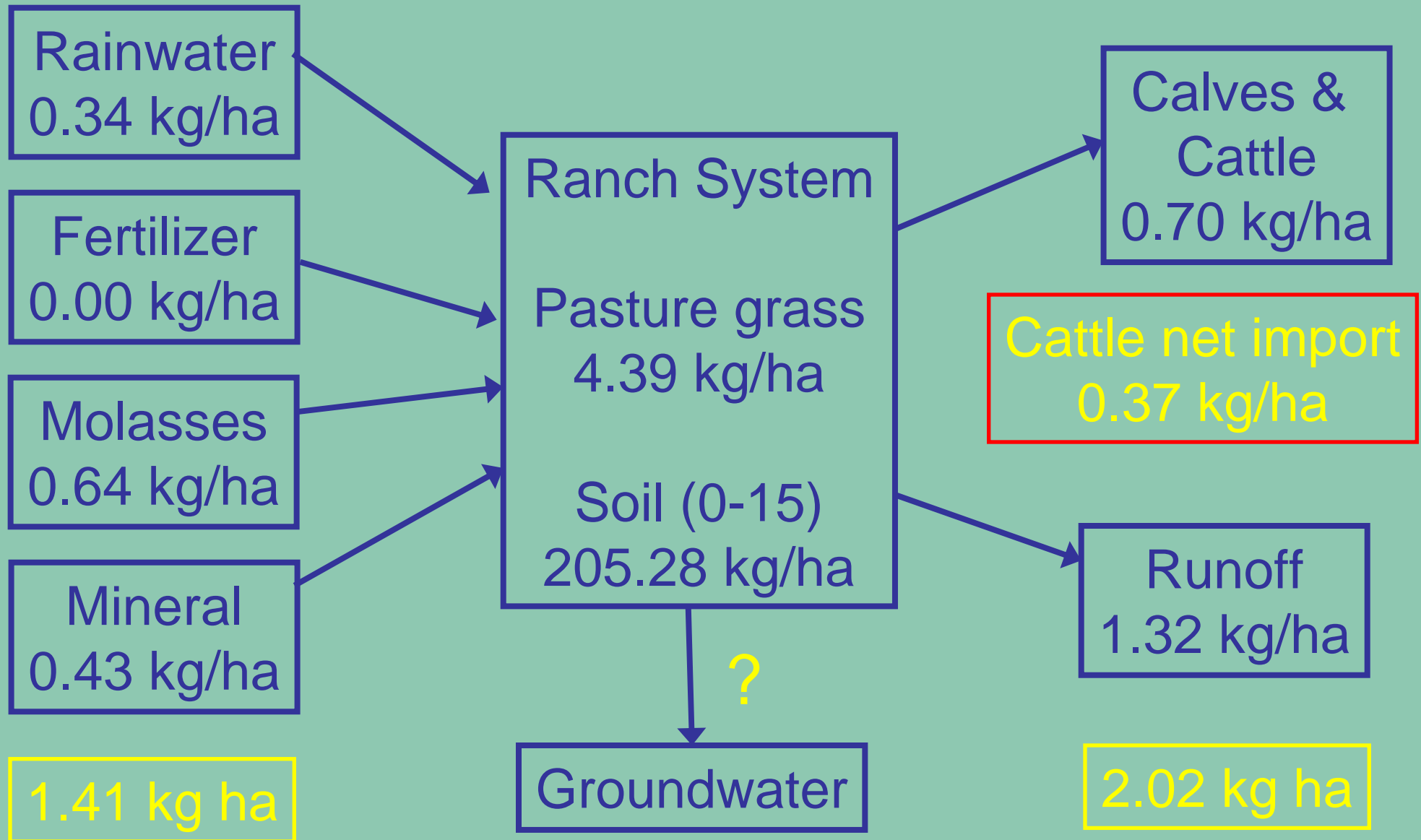
Nutrient Studies

Eutrophication of Pasture Wetlands



Land Use	Sites	Total P	TDP	SRP
Dairy	4	2.52 ± 0.83	1.92 ± 0.8	1.96 ± 0.7
Improved	11	0.29 ± 0.05	0.21 ± 0.04	0.16 ± 0.03
Unimproved	1	0.04 ± 0.00	0.027 ± 0.003	0.016 ± 0.004

Phosphorus Management and Balance



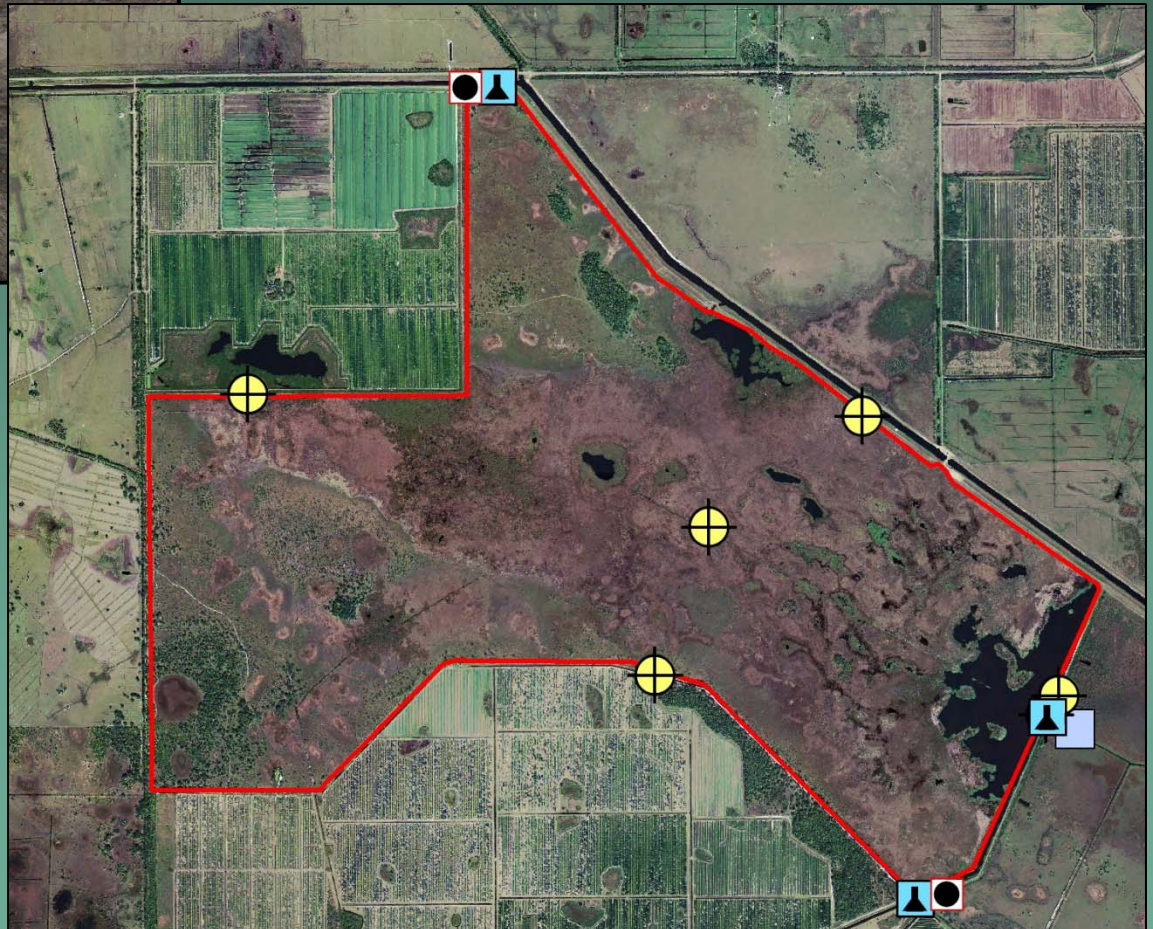
Ranchlands and Everglades Restoration

- Potential for water storage
 - ~900,000- 1.3 mil acre feet of storage needed
 - Ranches have infrastructure for managing water
 - Wetland restoration
 - Pasture water management
 - Pumping systems
- Nutrient load reduction
 - BMPs
 - Private STAs and water-related services

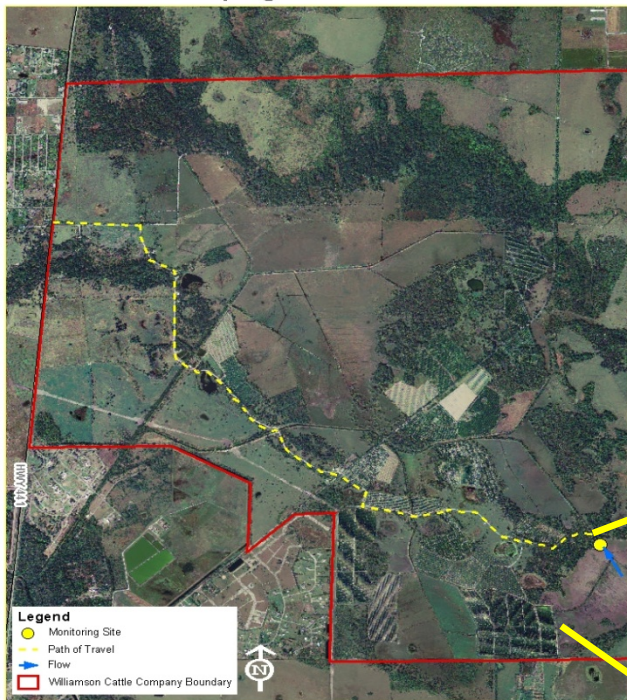
Treating regional water on private land



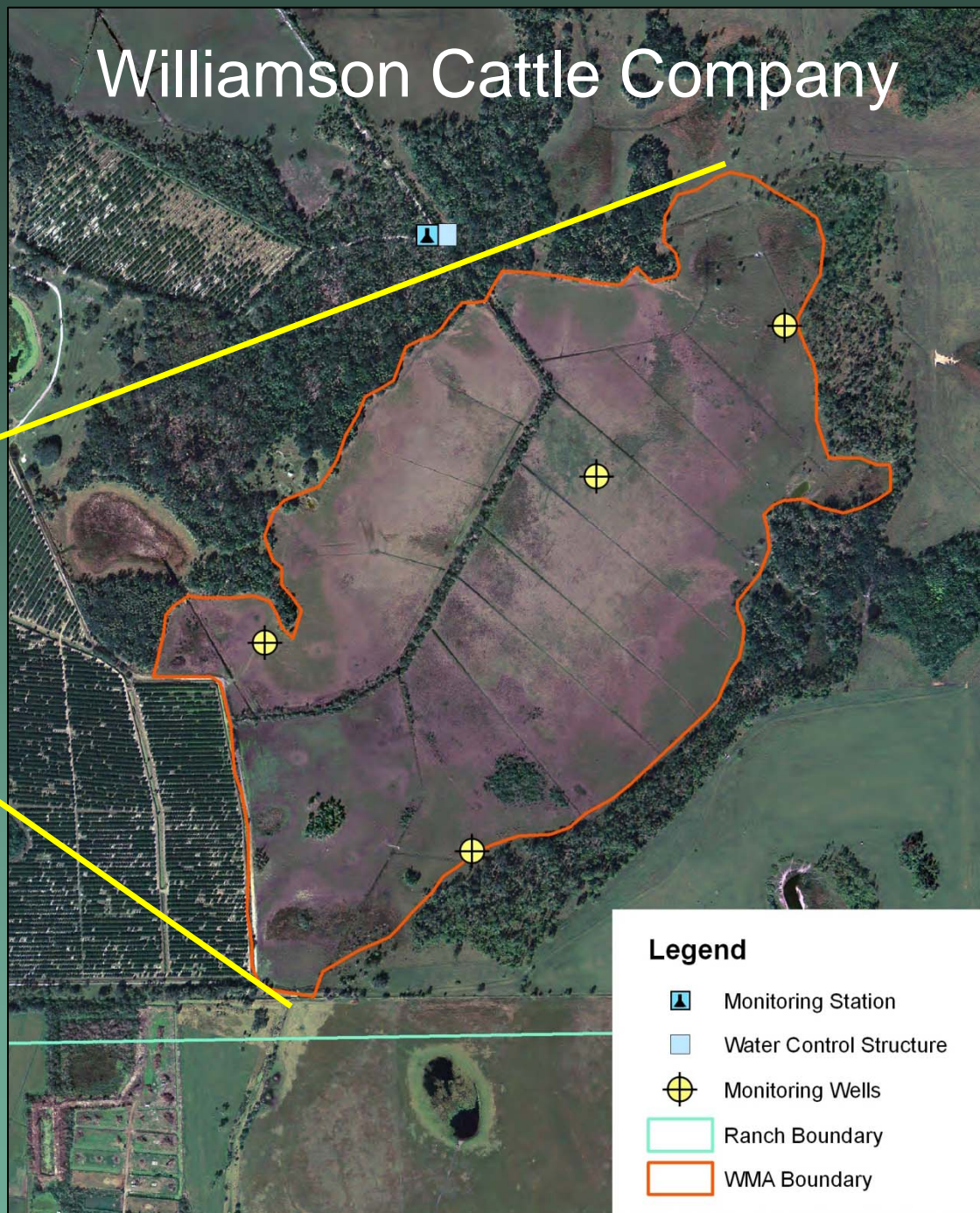
Lykes Bros. West
Waterhole Marsh



WWF Sampling - Williamson Cattle Co.



Williamson Cattle Company

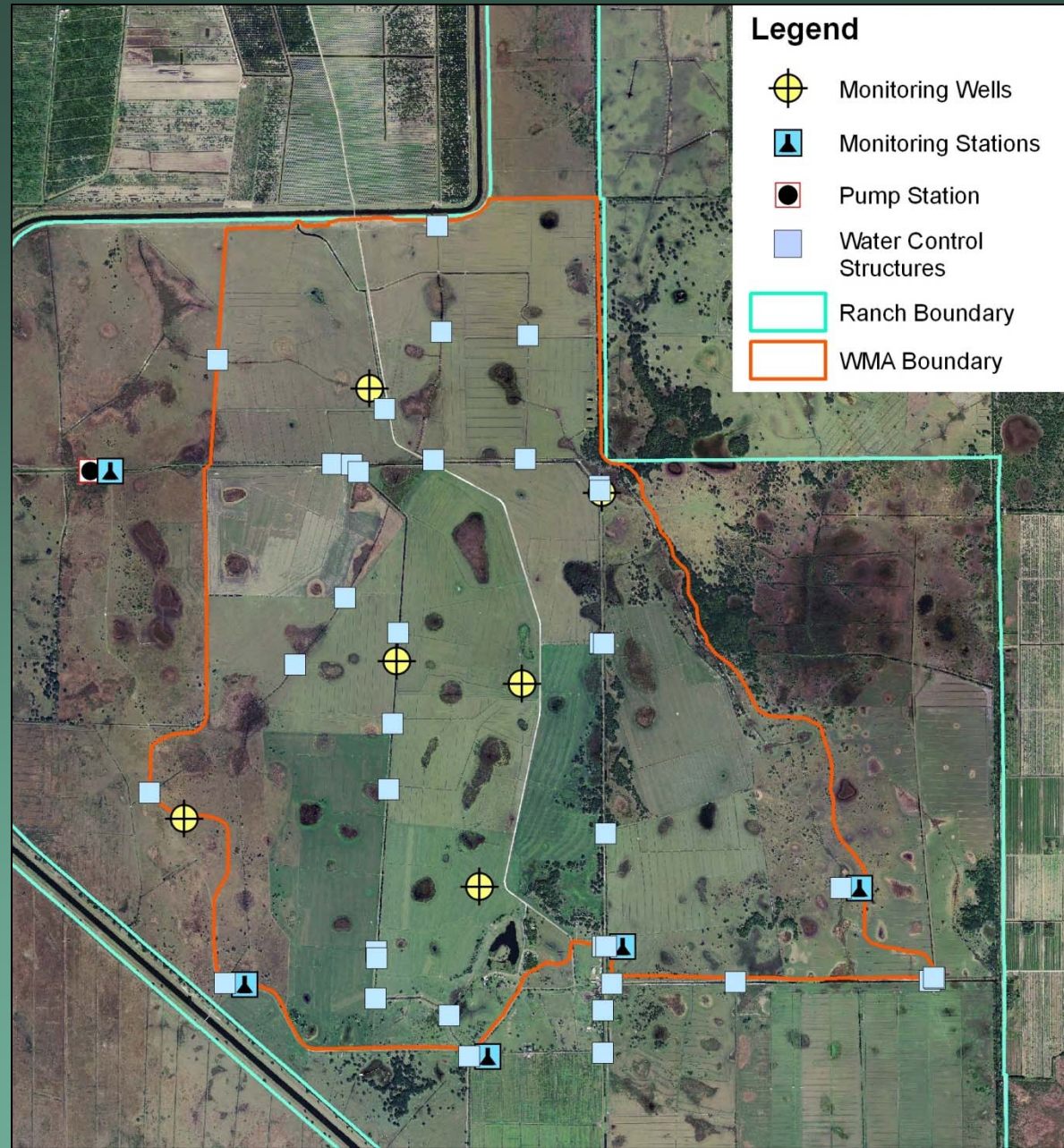


Restoring Drained Wetlands



Pasture Water Retention

Buck Island Ranch



Conclusions

Ranches can contribute to everglades restoration by:

- Maintaining a low-intensity land use on the landscape
 - Low nutrient runoff relative to other land uses
 - Native biodiversity and wildlife habitat
- Providing water-related environmental services
 - Water storage projects
 - Private storm treatment areas

But, ranches have low margins, high opportunity costs

- Pressure to intensify—counterproductive for restoration
- Need proper incentives
 - Cost share BMPs, conservation easements, environmental service payments

Thanks to all of our supporters and partners:

- South Florida Water Management District
- Florida Department of Agriculture and Consumer Services
- Florida Department of Environmental Protection
- USDA NRCS, CSREES
- World Wildlife Fund
- Florida Cattlemen's Association