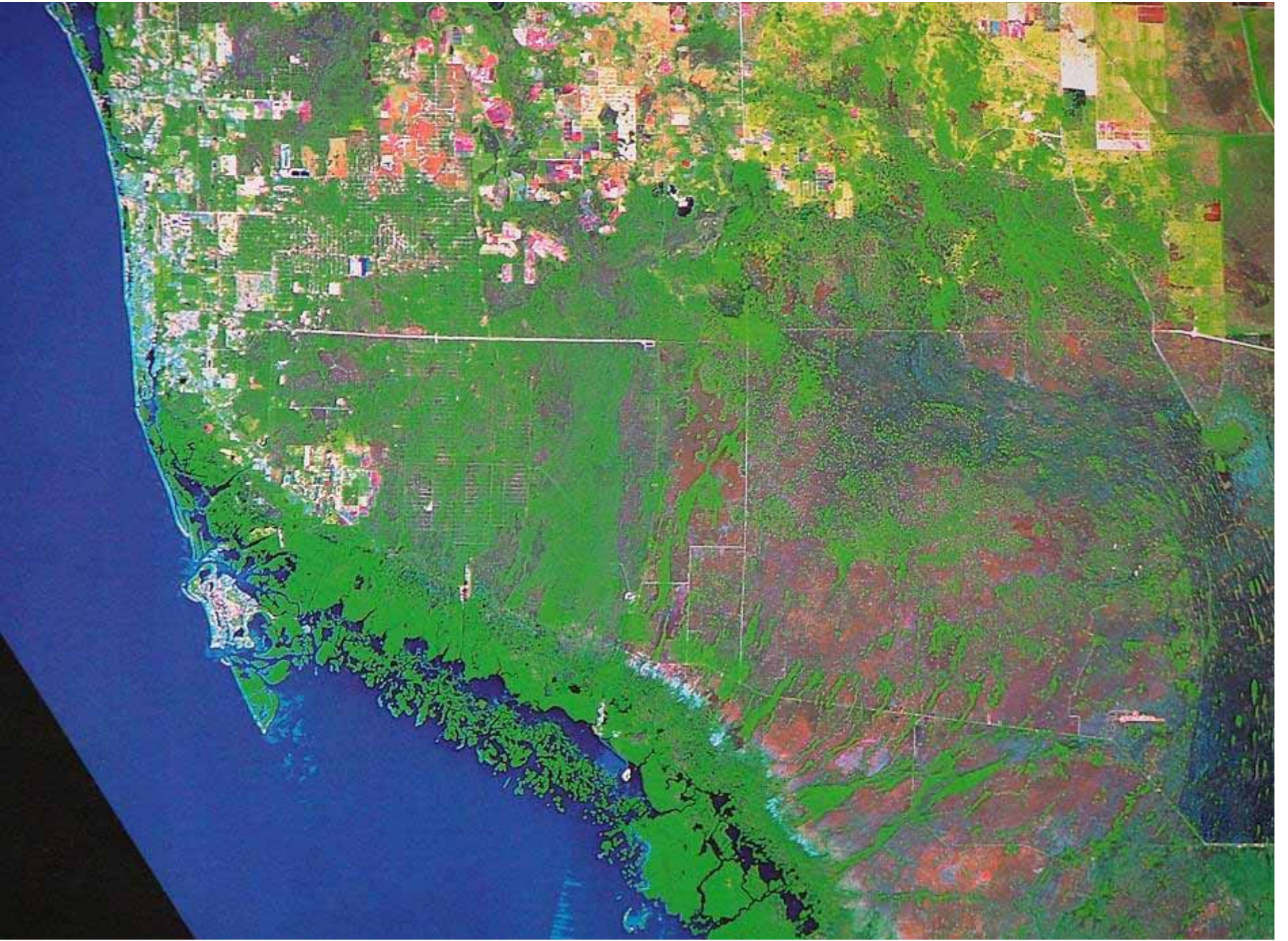


# **Hydrologic Impacts and Restoration in the Fakahatchee Strand of Southwest Florida**

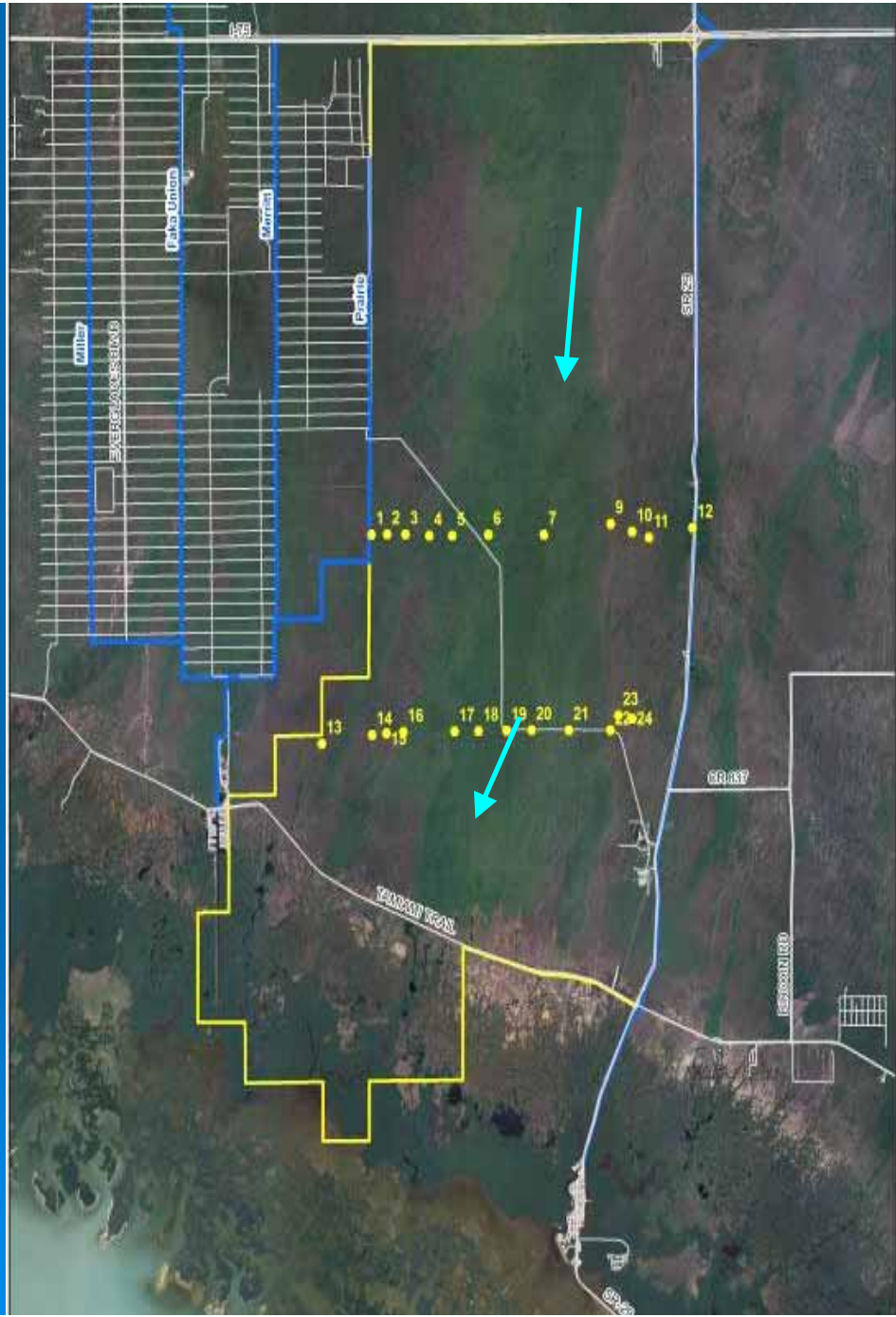
**Michael Duever**

**South Florida Water Management District**

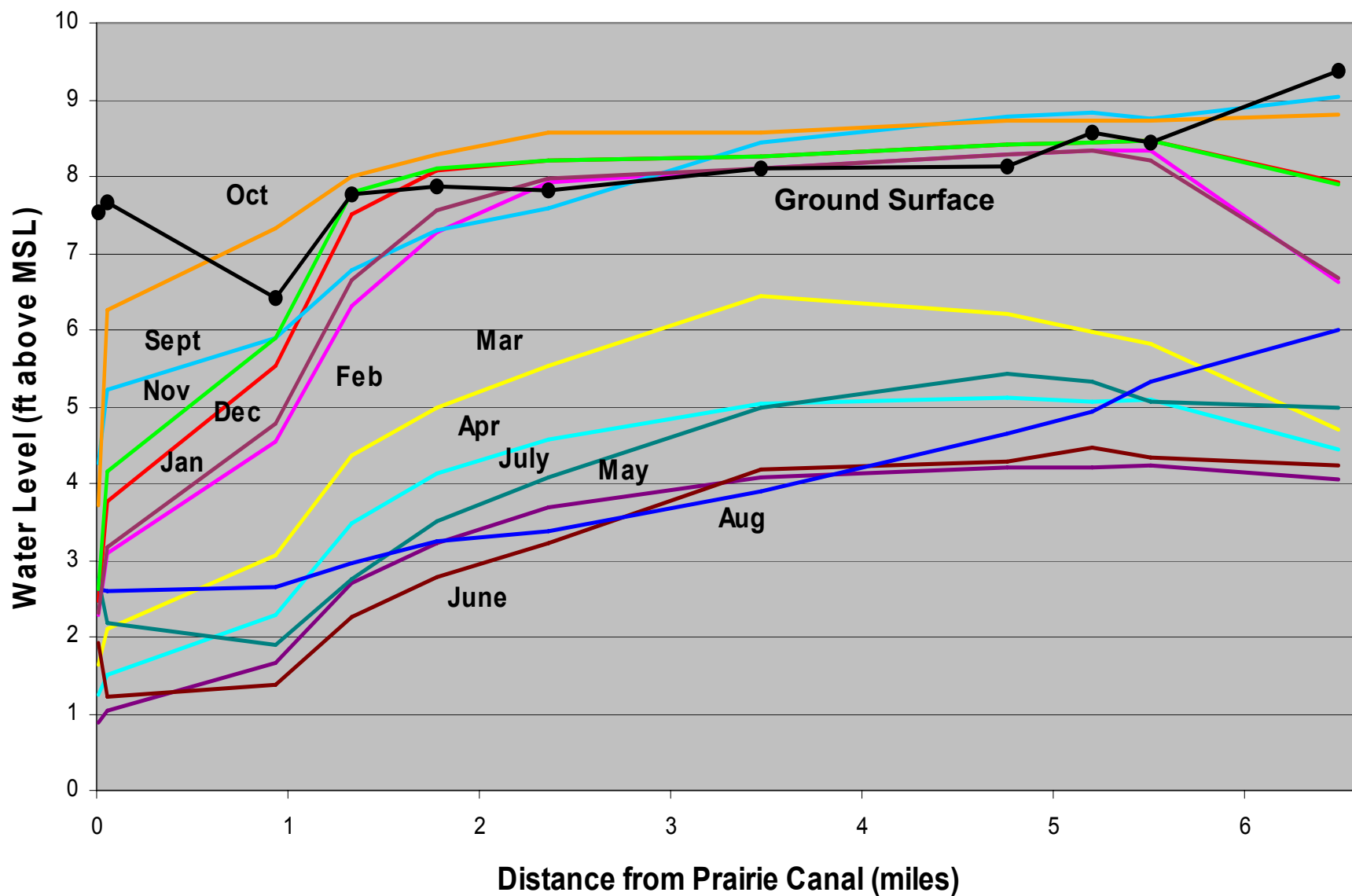




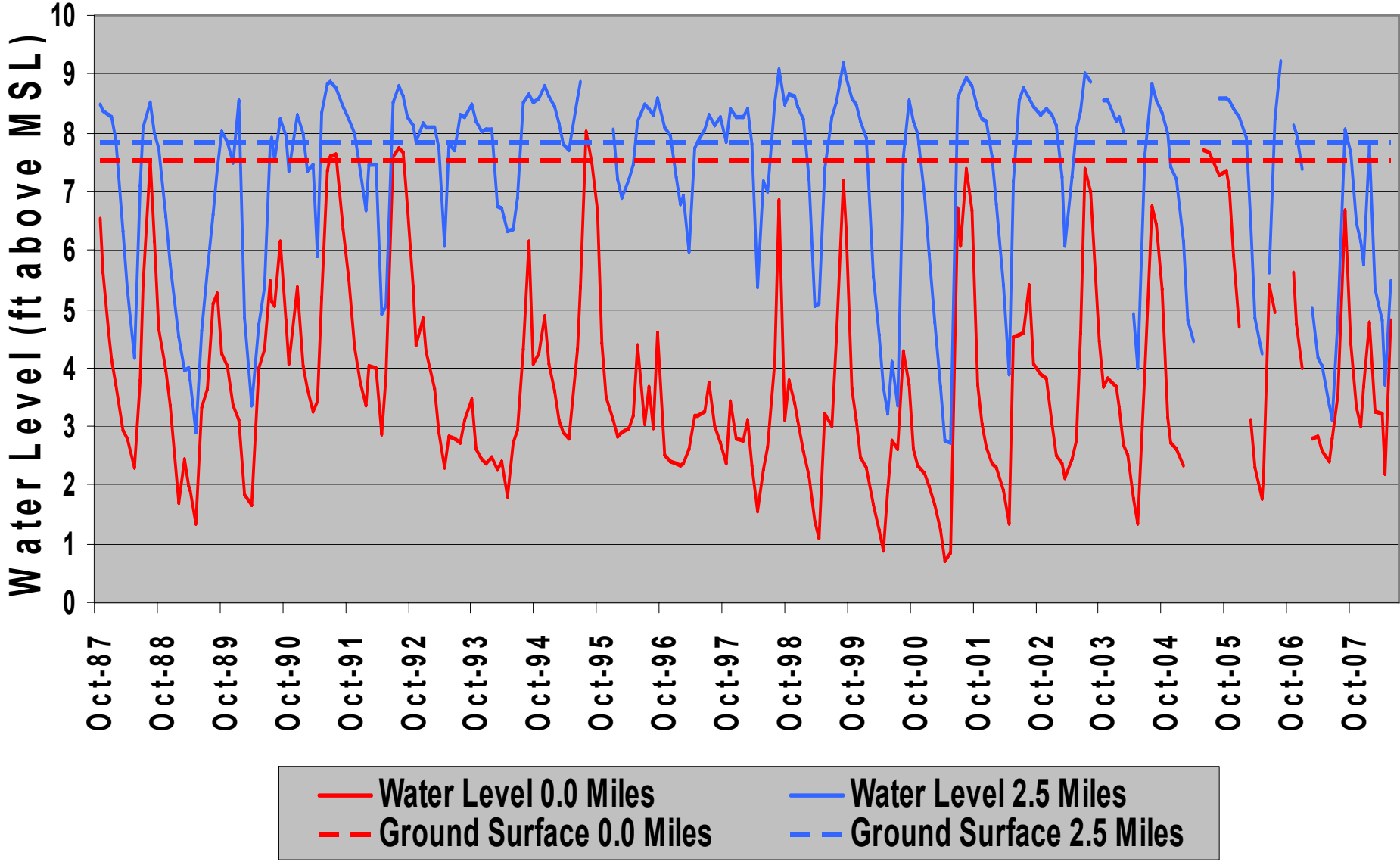




2000 Monthly Water Table Profiles - North Transect Wells



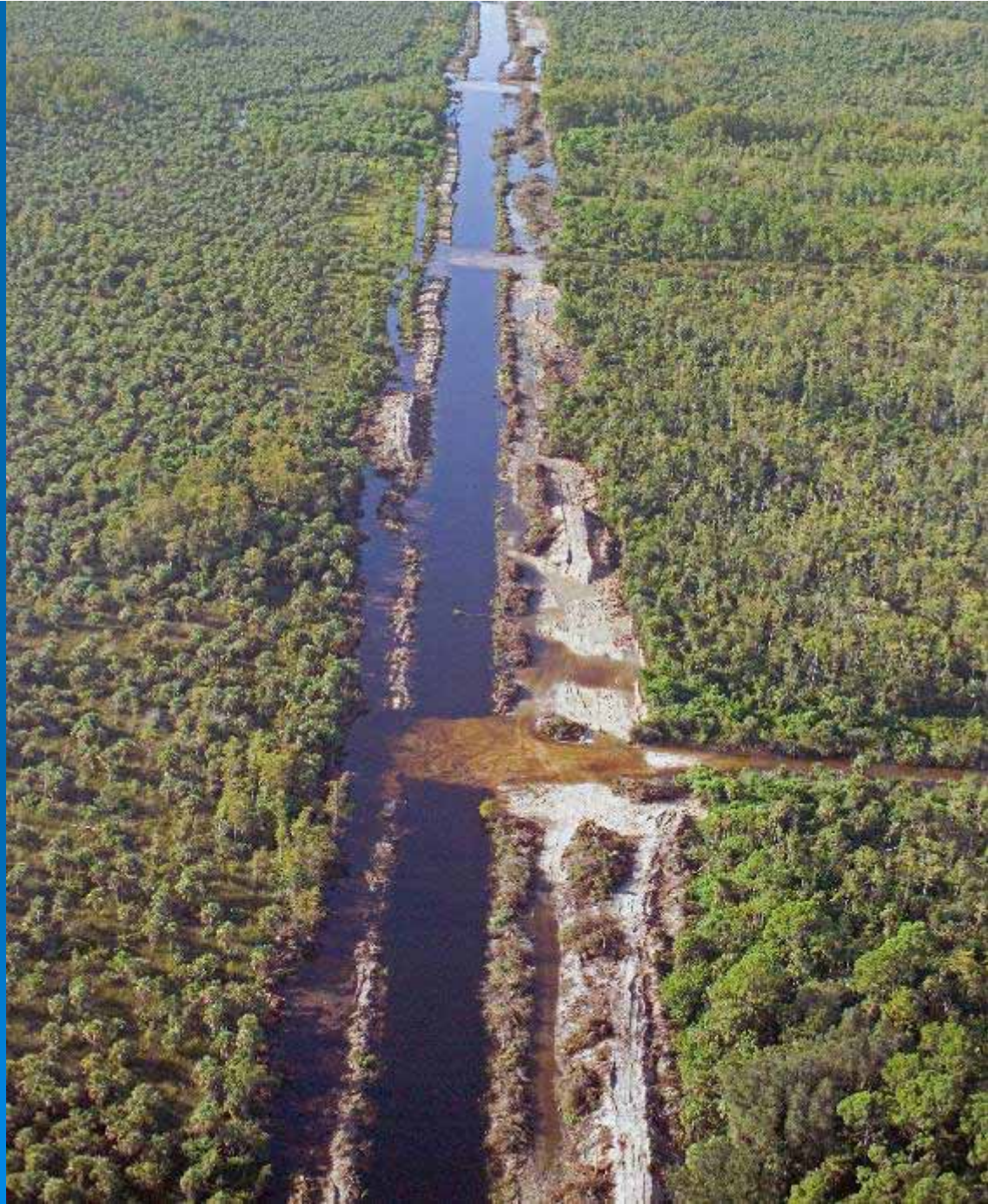
# North Transect Water Levels from Canal to 2.5 Miles Away



**We Now Have a Pretty Good  
Idea of the Degree and Extent  
of Hydrologic Impacts of  
Adjacent North – South Canals**

**What about Restoration ?**

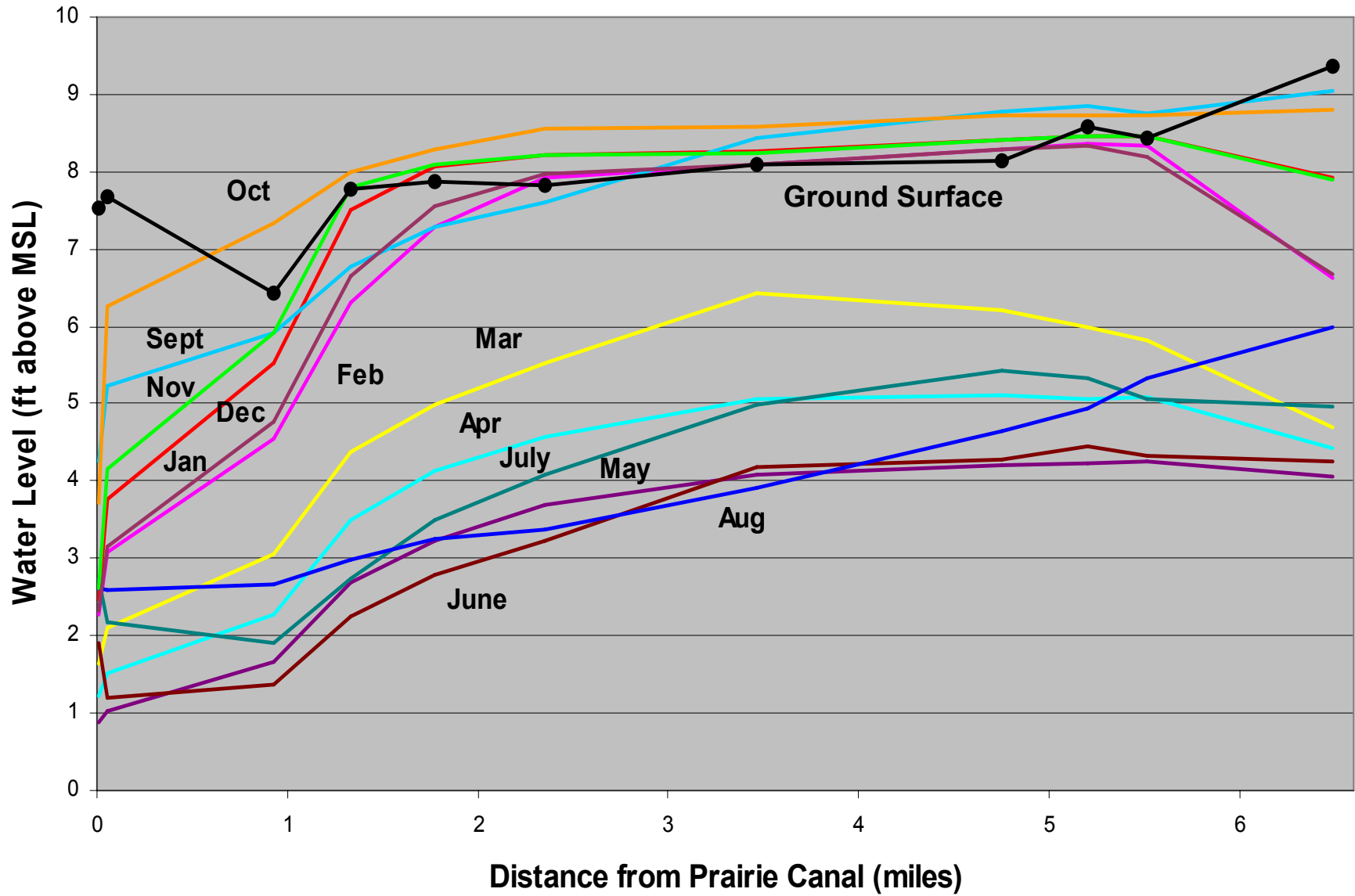




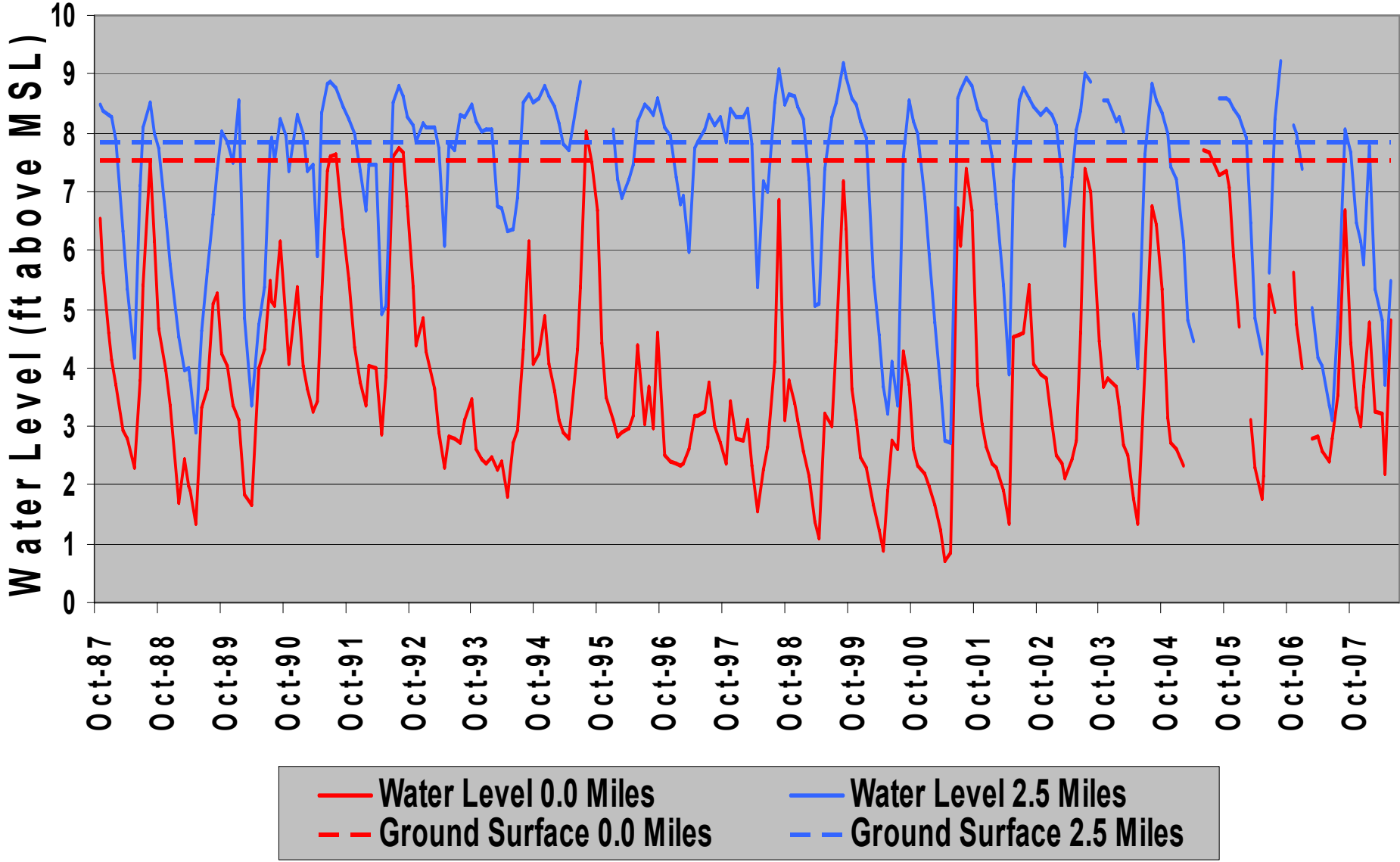




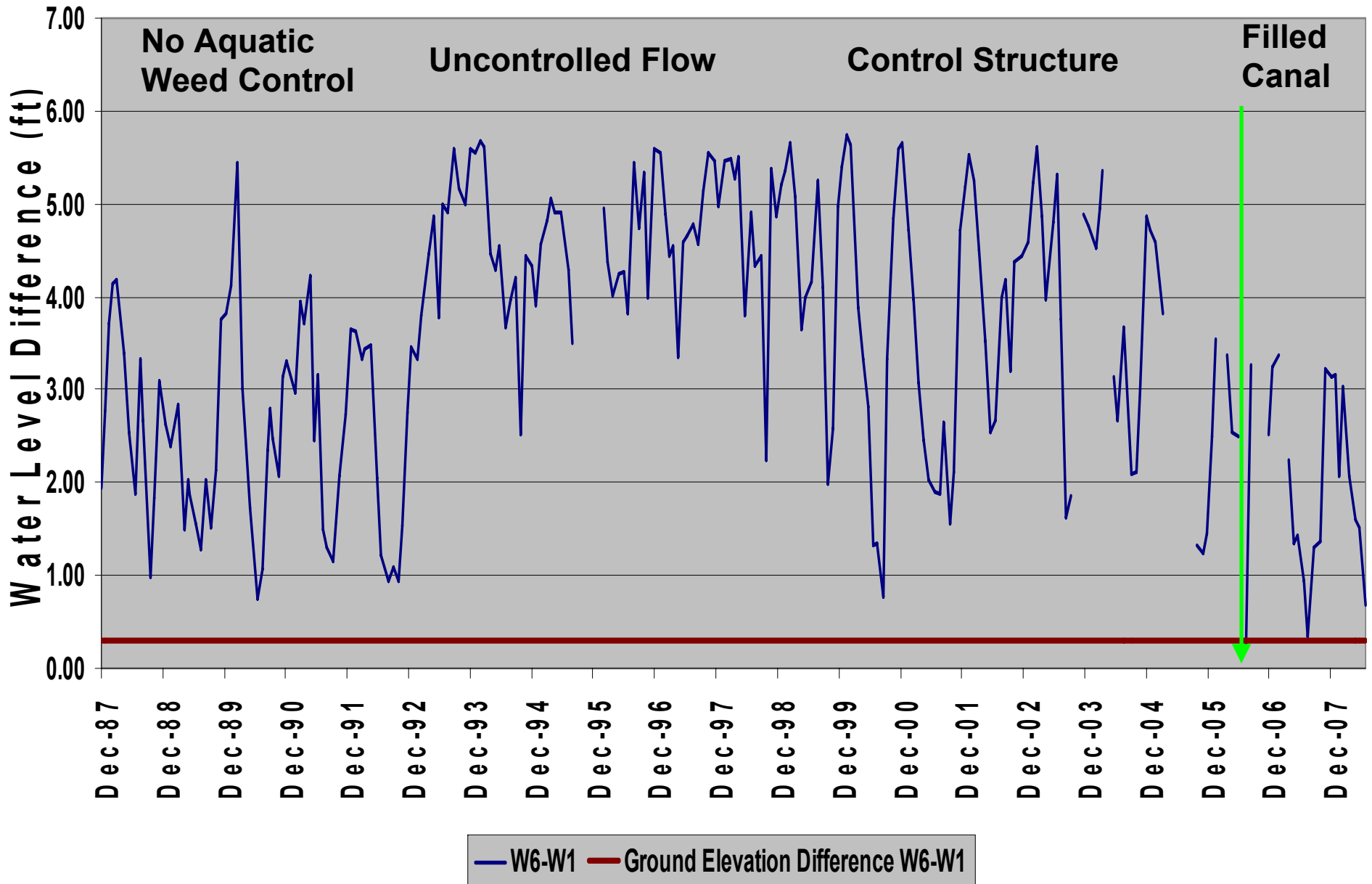
# 2000 Monthly Water Table Profiles - North Transect Wells

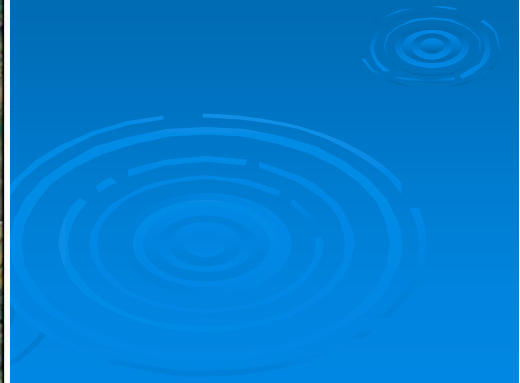
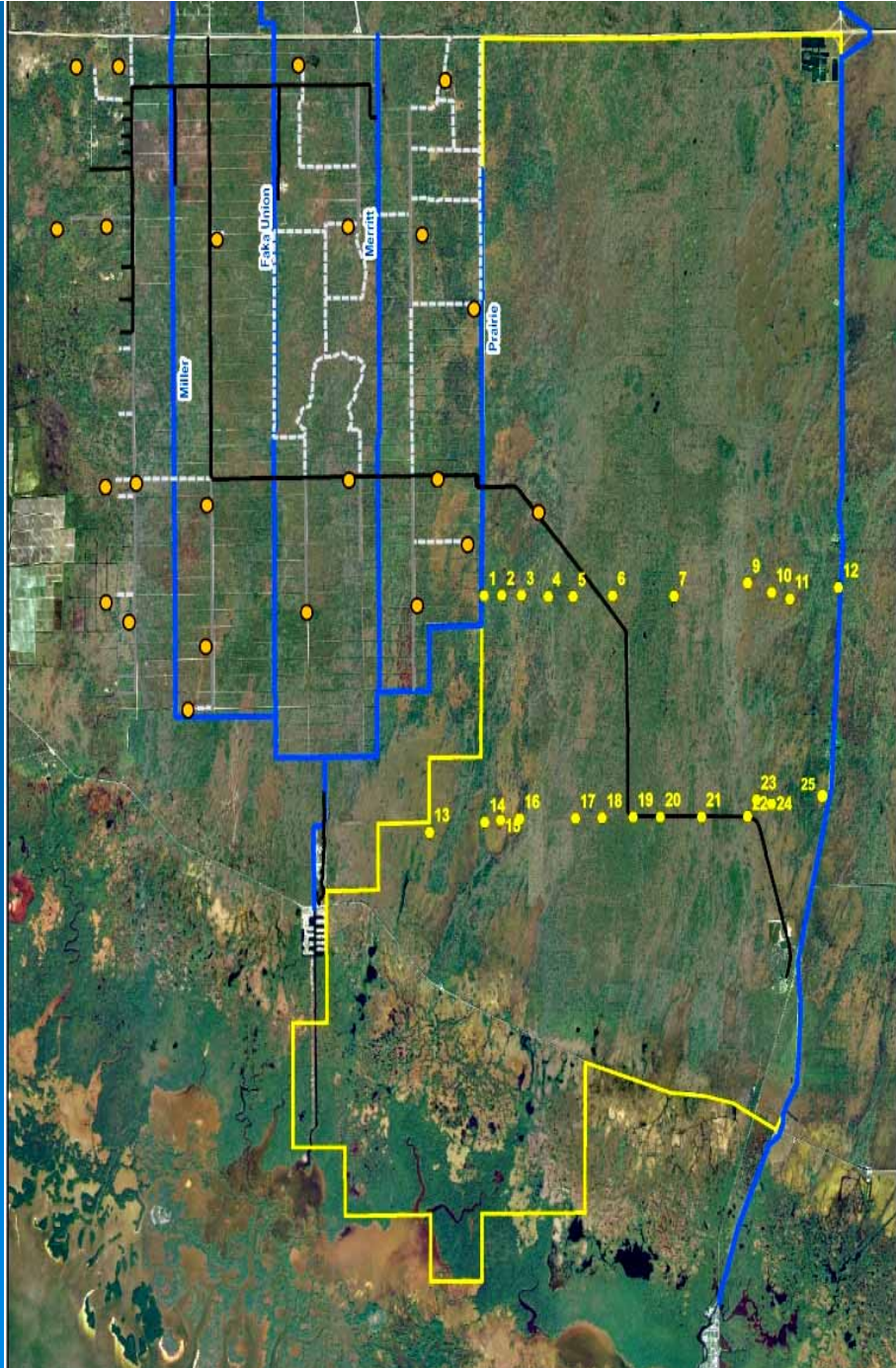


# North Transect Water Levels from Canal to 2.5 Miles Away

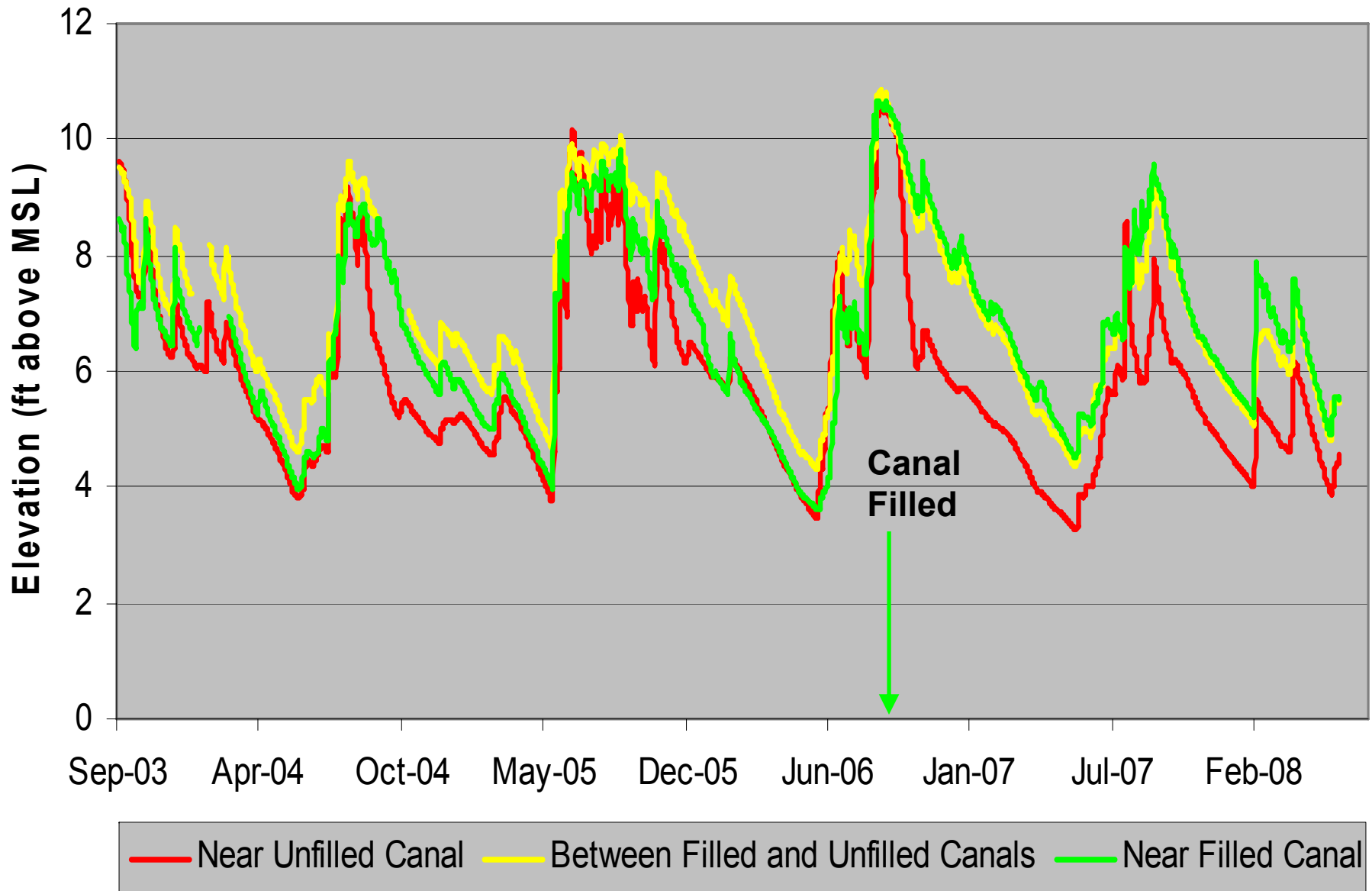


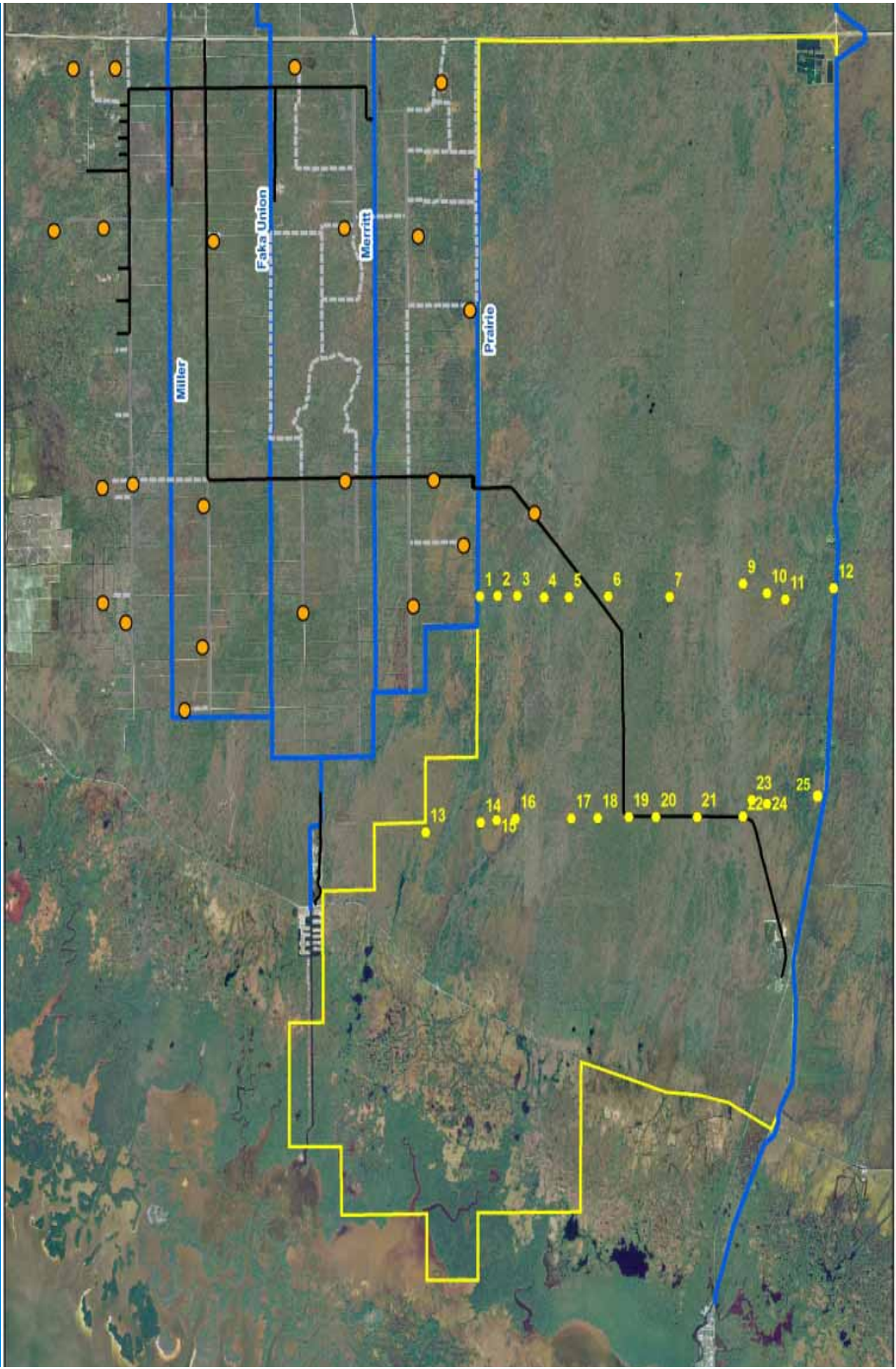
# Far Minus Near Canal Water Level Difference



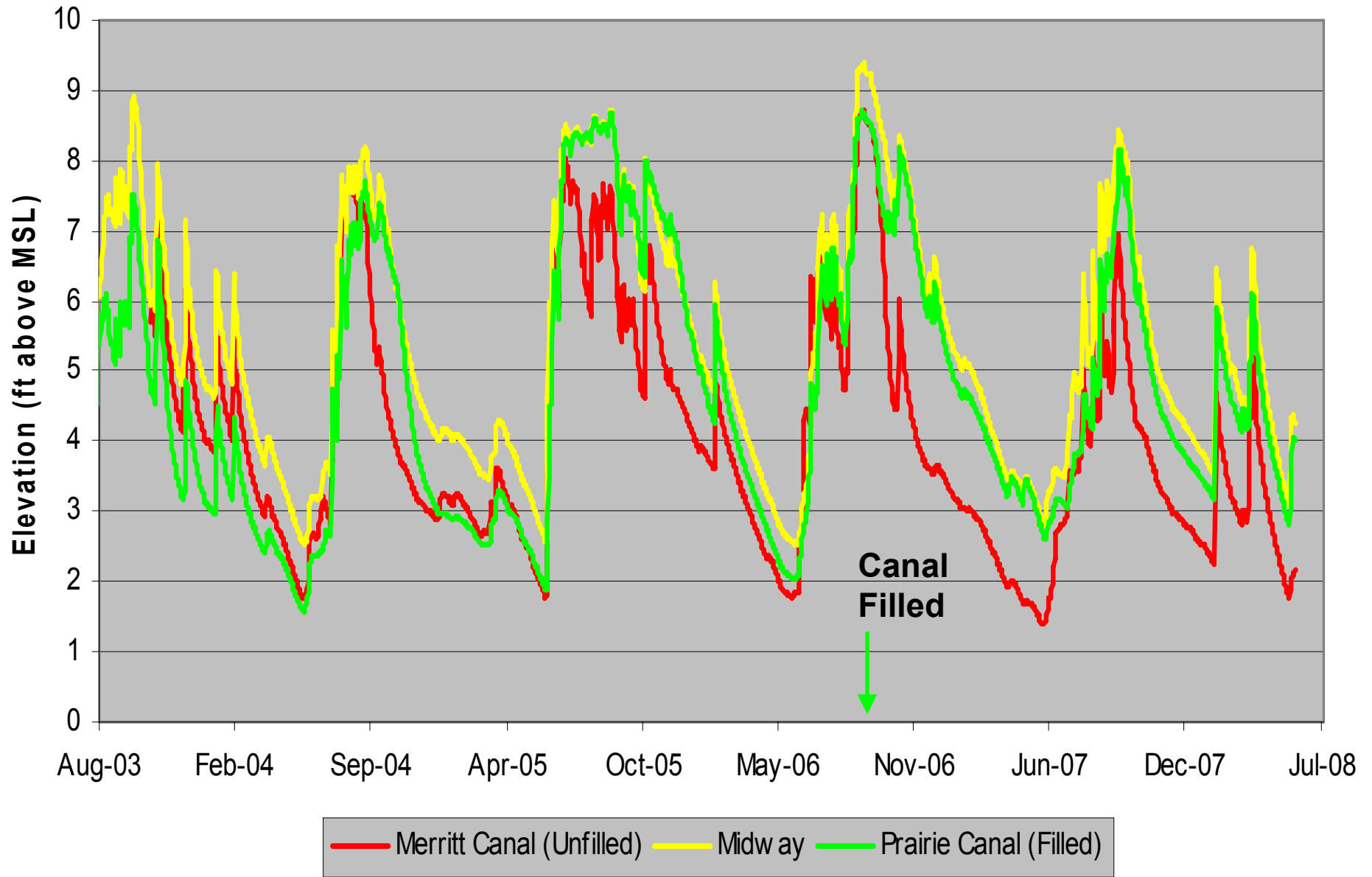


# Water Levels Relative to Filled/Unfilled Canals - Transect 2

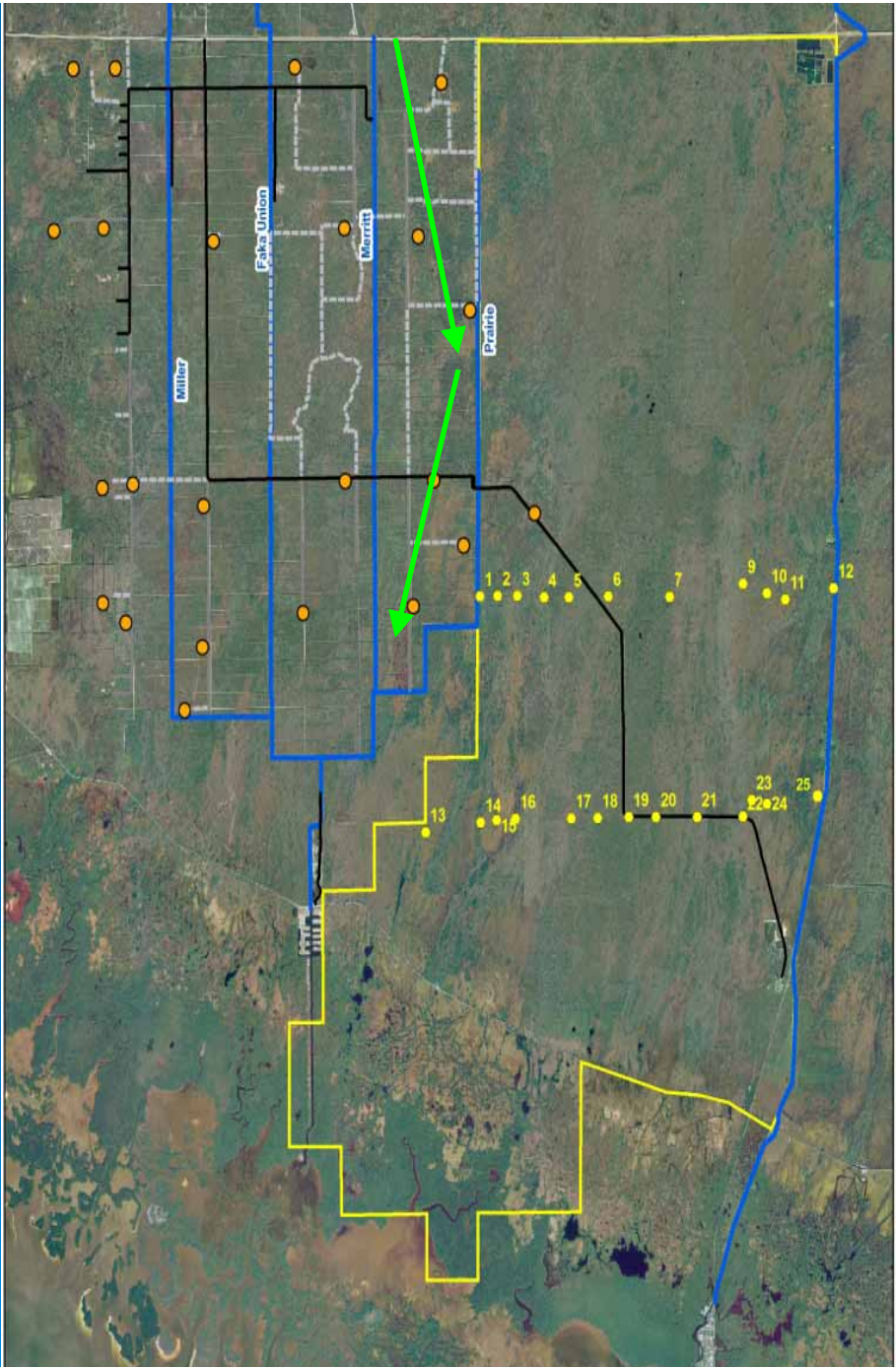




# Water Levels Relative to Filled / Unfilled Canals Transect 3







# Conclusions

- **Prairie Canal Lowered Adjacent Water Levels by Up to 2 ft in Summer Wet Season**
- **Prairie Canal Lowered Adjacent Water Levels by Up to 5 ft in Spring Dry Season**
- **Canal Drainage Effects Extended 1 – 3 miles into Fakahatchee Strand**
- **Seeing Beginnings of Hydrologic Restoration from Filling Prairie Canal in Winter 2006 - 2007**

















