

GEER 2008

Development and Implementation of
Agricultural Best Management Practices in
the Lake Okeechobee Watershed

Bonnie Wolff

FDACS Office of Agricultural Water Policy
Okeechobee, Florida

www.floridaagwaterpolicy.com

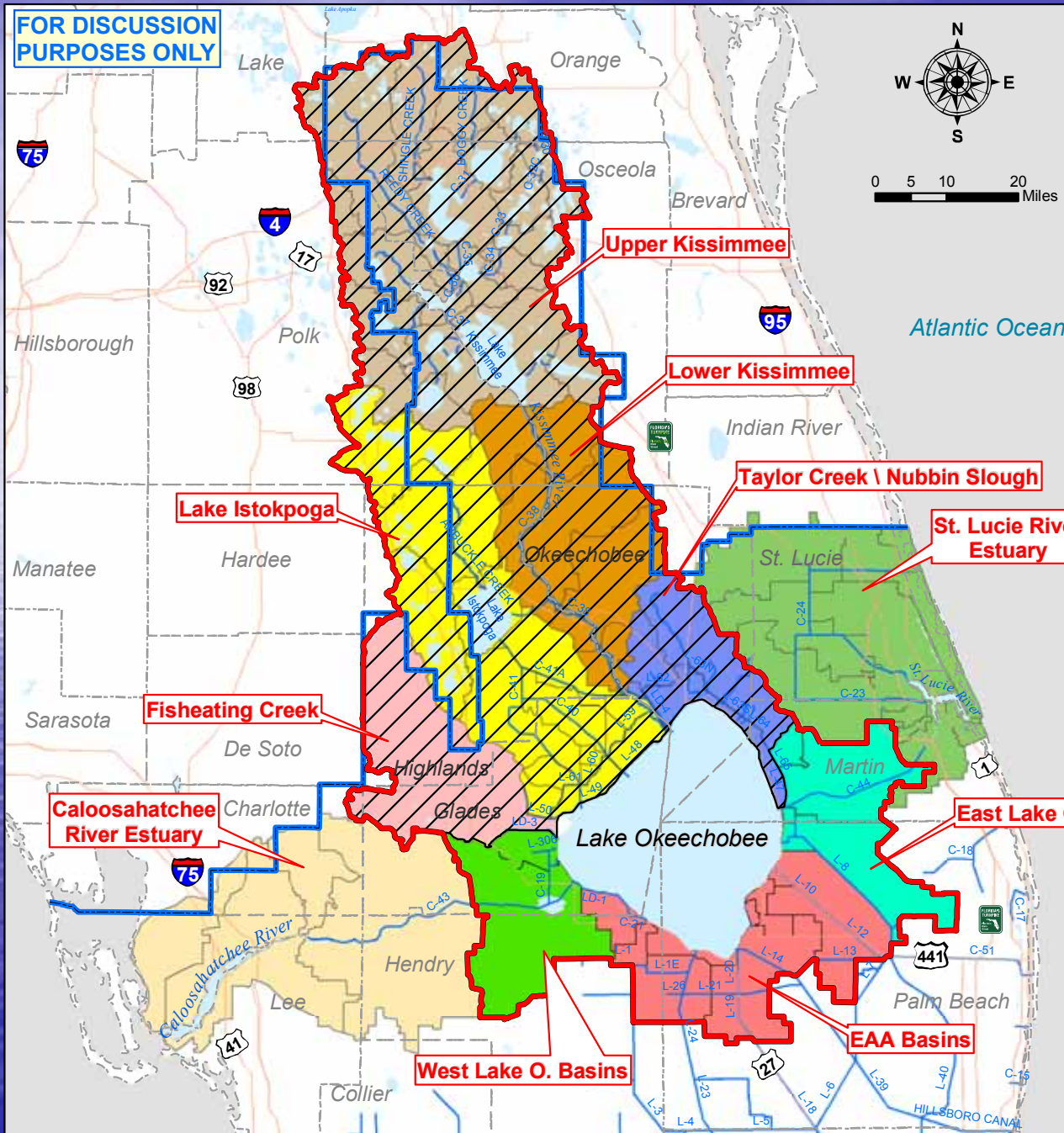
Lake Okeechobee Protection Act 2000 s. 373.4595 F. S.

- Authorized FDACS to take lead in development and implementation of Best Management Practices for agricultural land uses
- Agricultural landowners either enroll in FDACS BMP program or monitor to demonstrate compliance with SFWMD WOD program

Lake Okeechobee Protection Act 2000

- BMP implementation is achieved through conservation planning process focusing on water management practices (e.g. re-hydrating previously drained wetlands, improving placement and sizing of water control structures).
- All landowners must implement nutrient management plans with include soil and tissue testing to justify nutrient applications.

FOR DISCUSSION
PURPOSES ONLY



Northern Everglades Phase II Technical Plan Lake Okeechobee Watershed

- Roads
- SFWM Northern Border
- County Boundary
- SFWM Major Canals
- LOPP Hydrologic Boundary
- Upper Kissimmee
- Lower Kissimmee
- Lake Istokpoga
- Taylor Creek/Nubbin Slough
- Fisheating Creek
- West Lake O. Basins
- East Lake O. Basins
- EAA Basins
- Caloosahatchee River Estuary
- St. Lucie River Estuary
- Basins
- Regional Simulation Model - Sub Watersheds

This map is a conceptual tool utilized for project development only. This map is not self-executing or binding, and does not otherwise affect the interests of any persons including any vested rights or existing uses of real property and is not a survey.



Lake Okeechobee Watershed

- Legislation prescribed initial work in the 4 Priority Basins.
 - BMP planning activities are complete on 550,000 acres of agricultural lands with BMPs currently being implemented. Most of this acreage is in the four priority basins (S-191), (S-154), (S-65D and E).
 - BMP plans are being developed on an additional 400,000 acres. BMP planning is scheduled to be complete on the remaining approximately 700,000 agricultural acres by July of 2010 with BMP implementation complete by 2015.
- By July1, 2008 FDACS had spent \$45 Million on BMP planning and implementation. An additional \$10.3 Million has been spent by the USDA/NRCS.

Replace Water Control Structure



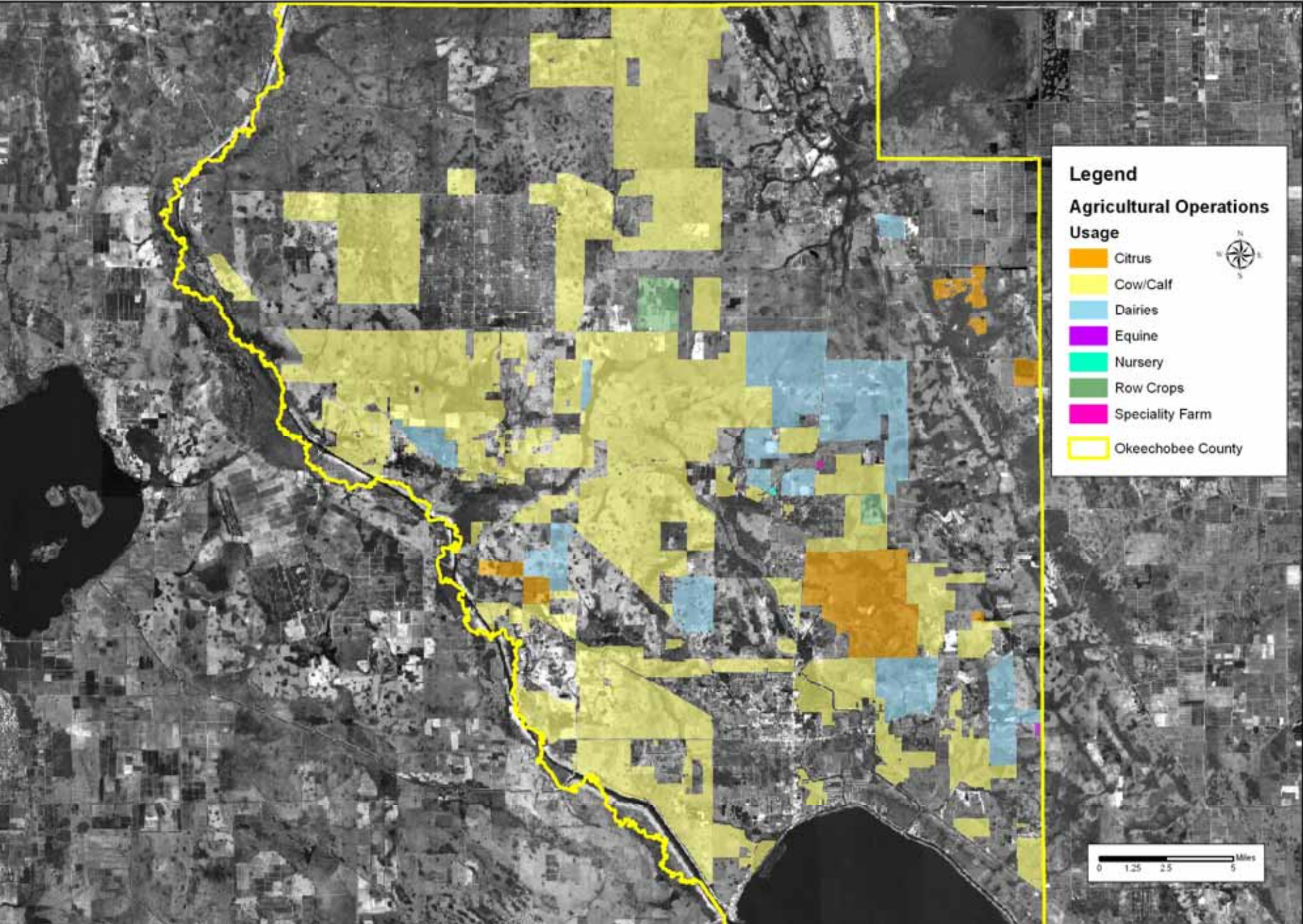
Critical Area Fencing



Public/Private Interagency Collaborative Projects

- SFWMD and FDACS co-funding Alternative Water Supply projects.
- Florida Ranchland Environmental Services Project (FRESP).
- Taylor Creek Reservoir Algal Turf Scrubber.
- Dairy Phosphorus Removal Technologies.
- Hybrid Wetland Treatment Technology.
- USGS Basin-scale Water Quality Monitoring.

Producers with Notices of Intent to Implement BMPs



Statewide Agricultural BMP Facts

- 1.88 million acres enrolled and implementing BMPs (+23%)
- 494,000 acres of Citrus (+18%)
- 800,000 acres of Vegetables/Row Crops (+31%)
- Cost-share available statewide
- BMP implementation verification underway