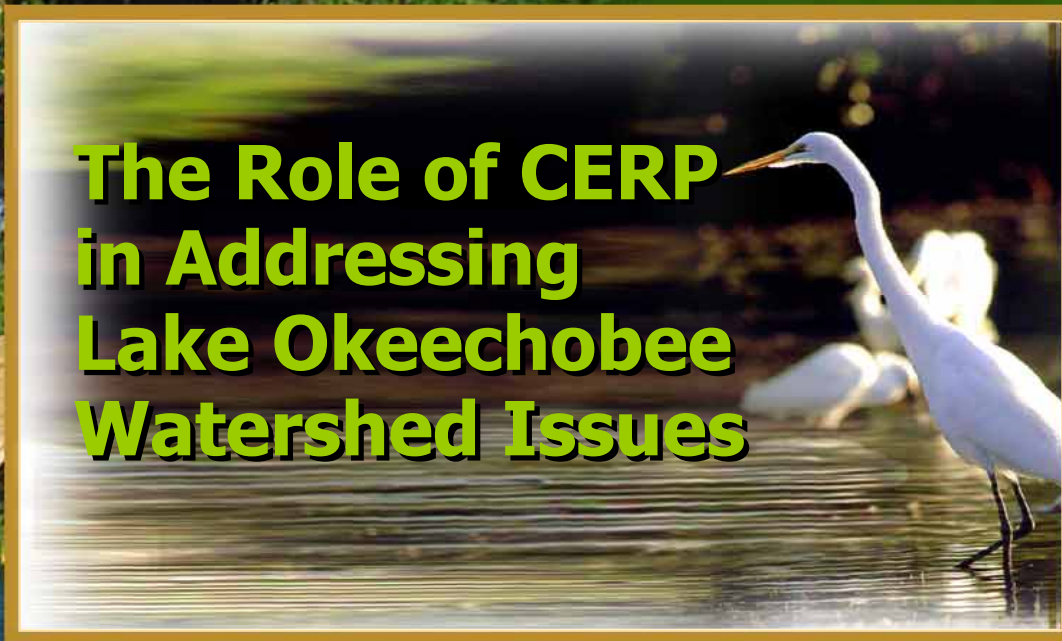


**The Role of CERP  
in Addressing  
Lake Okeechobee  
Watershed Issues**



**Stu Appelbaum**  
**Deputy for Restoration Program Management**  
**Army Corps of Engineers, Jacksonville District**

restoration  
restoration

*Rescuing an Endangered Ecosystem:  
The Plan to Restore America's Everglades*



*The Central and Southern Florida Project  
Comprehensive Review Study  
(The Restudy)*

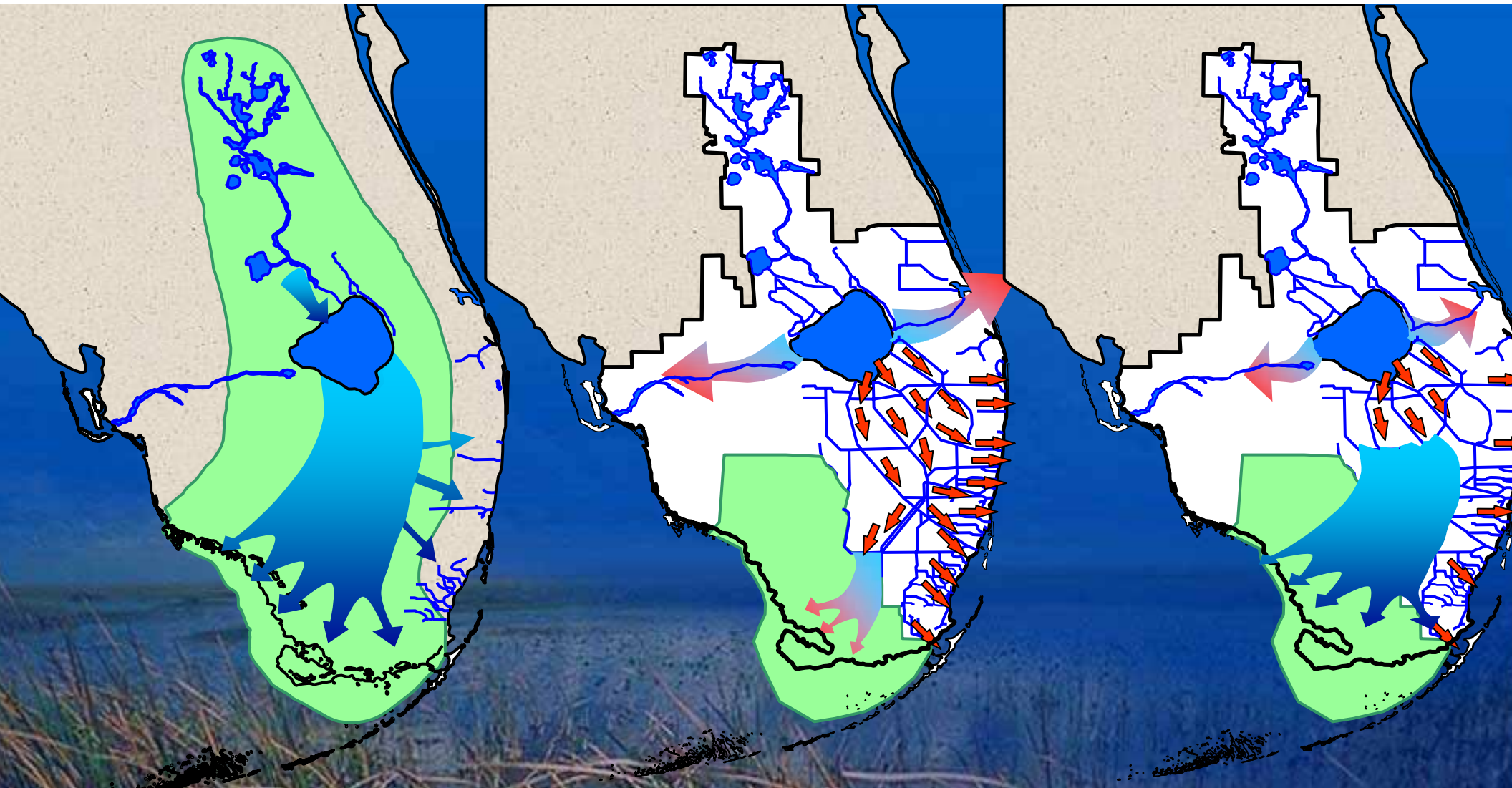
July 1999

On December 11, 2000, the President signed the Water Resources Development Act of 2000, approving:

## **Comprehensive Everglades Restoration Plan (CERP)**

A program providing for the restoration, preservation, and protection of the south Florida ecosystem while providing for other water-related needs of the region.





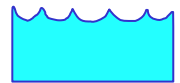
Historic  
Flow

Current  
Flow

Future  
Flow

**The Goal**

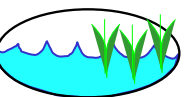
# 68 CERP Components



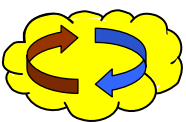
Surface Water Storage  
Reservoirs – 180,000 acres



Aquifer Storage  
& Recovery – 330  
wells



Stormwater Treatment  
Areas (STAs) – 36,000 acres



Reuse Wastewater – 2 Regional  
plants



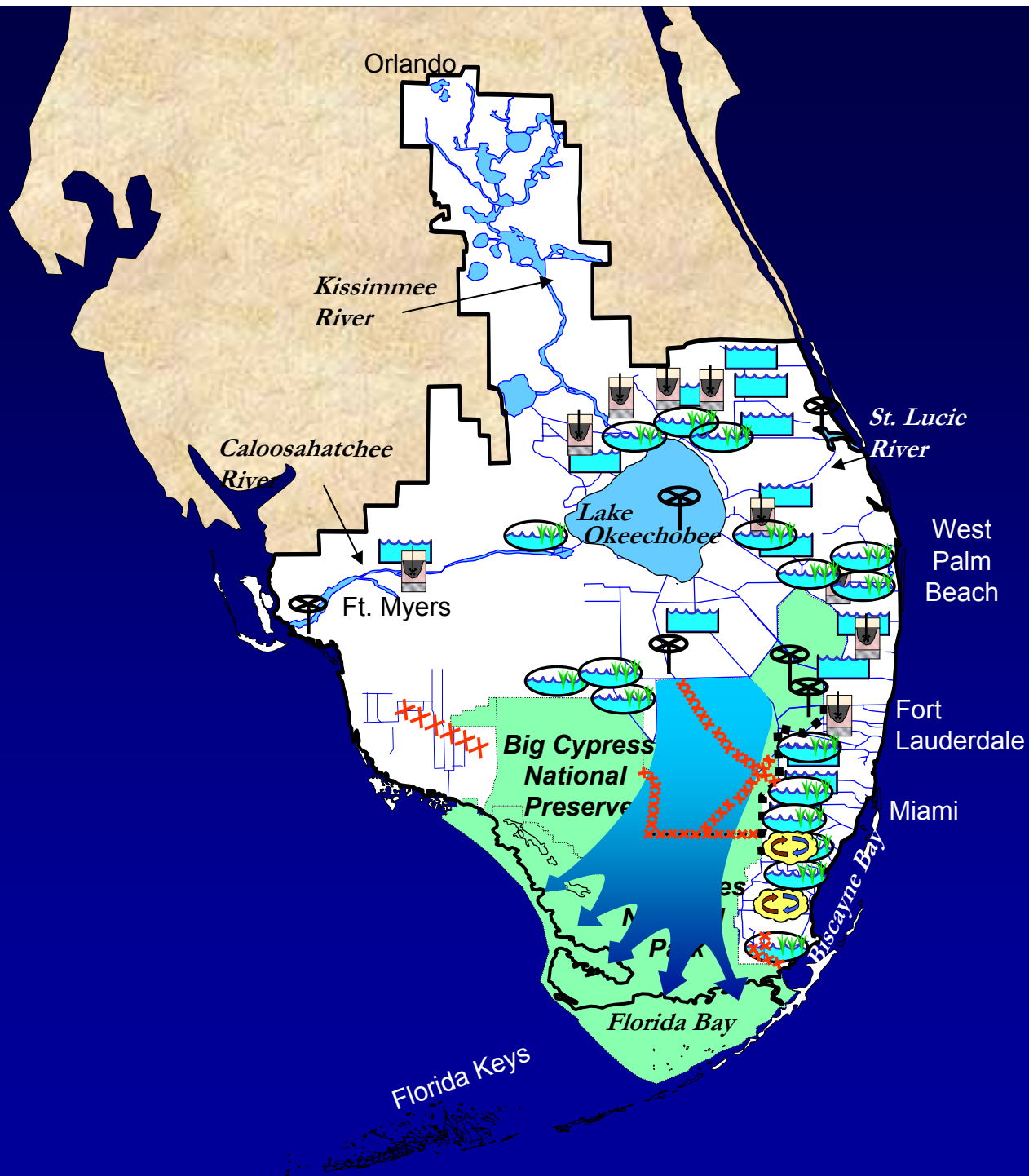
Seepage Management



Removing Barriers  
to Sheetflow – 240 miles



Operational Changes - Rainfall  
Based Deliveries



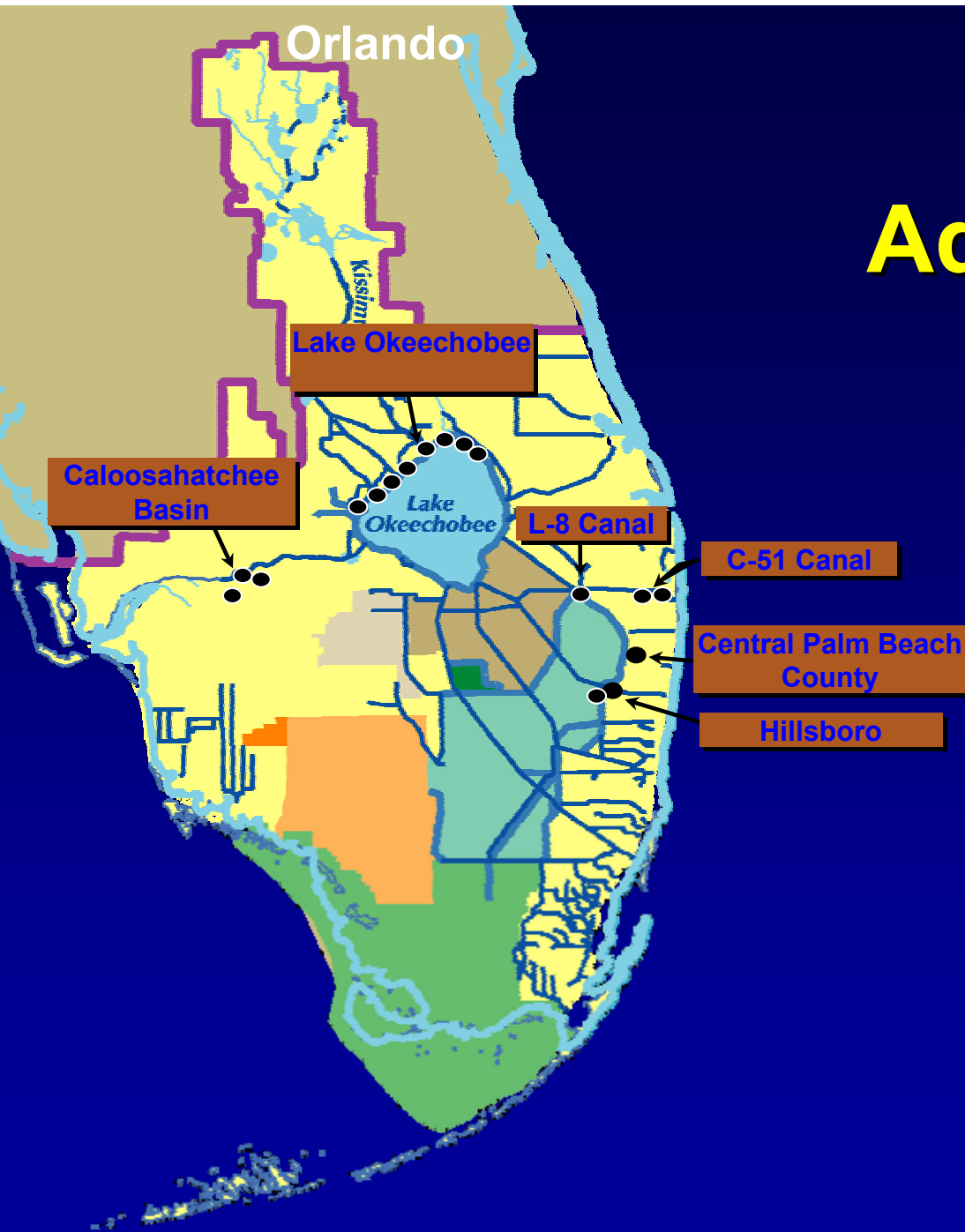
# Yellow Book Headwaters Storage Reservoirs

North of LO	200,000 ac-ft
Taylor Creek/Nubbin Slough	50,000 ac-ft
C-44	40,000 ac-ft
EAA	360,000 ac-ft
C-43	160,000 ac-ft
Southern L-48	<u>48,000 ac-ft</u>
	858,000 ac-ft





# Yellow Book Aquifer Storage and Recovery

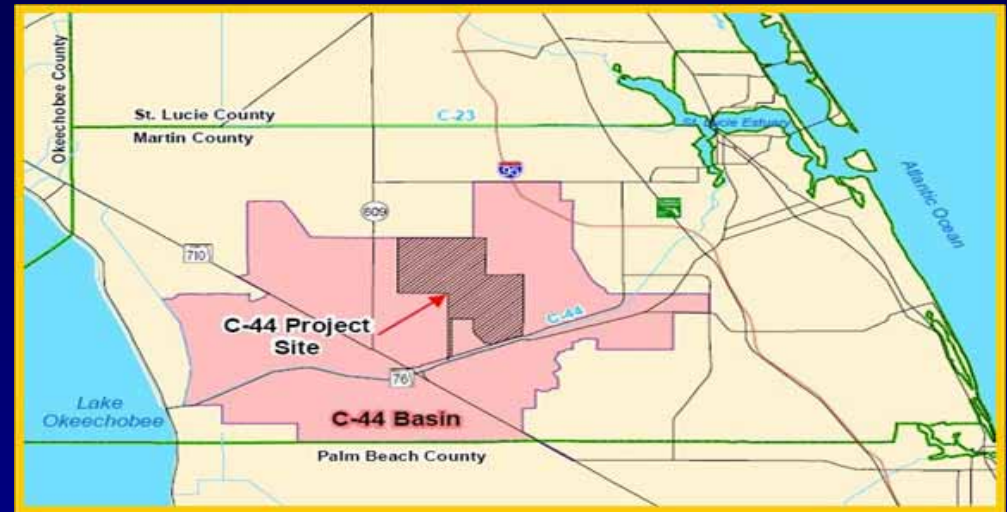


<u>CERP ASR Sites</u>	<u>Wells</u>
Lake Okeechobee	200
Caloosahatchee	44
L-8 Basin	10
C-51 Basin	34
Central PBC	15
Hillsboro	30
<b>TOTAL</b>	<b>333</b>

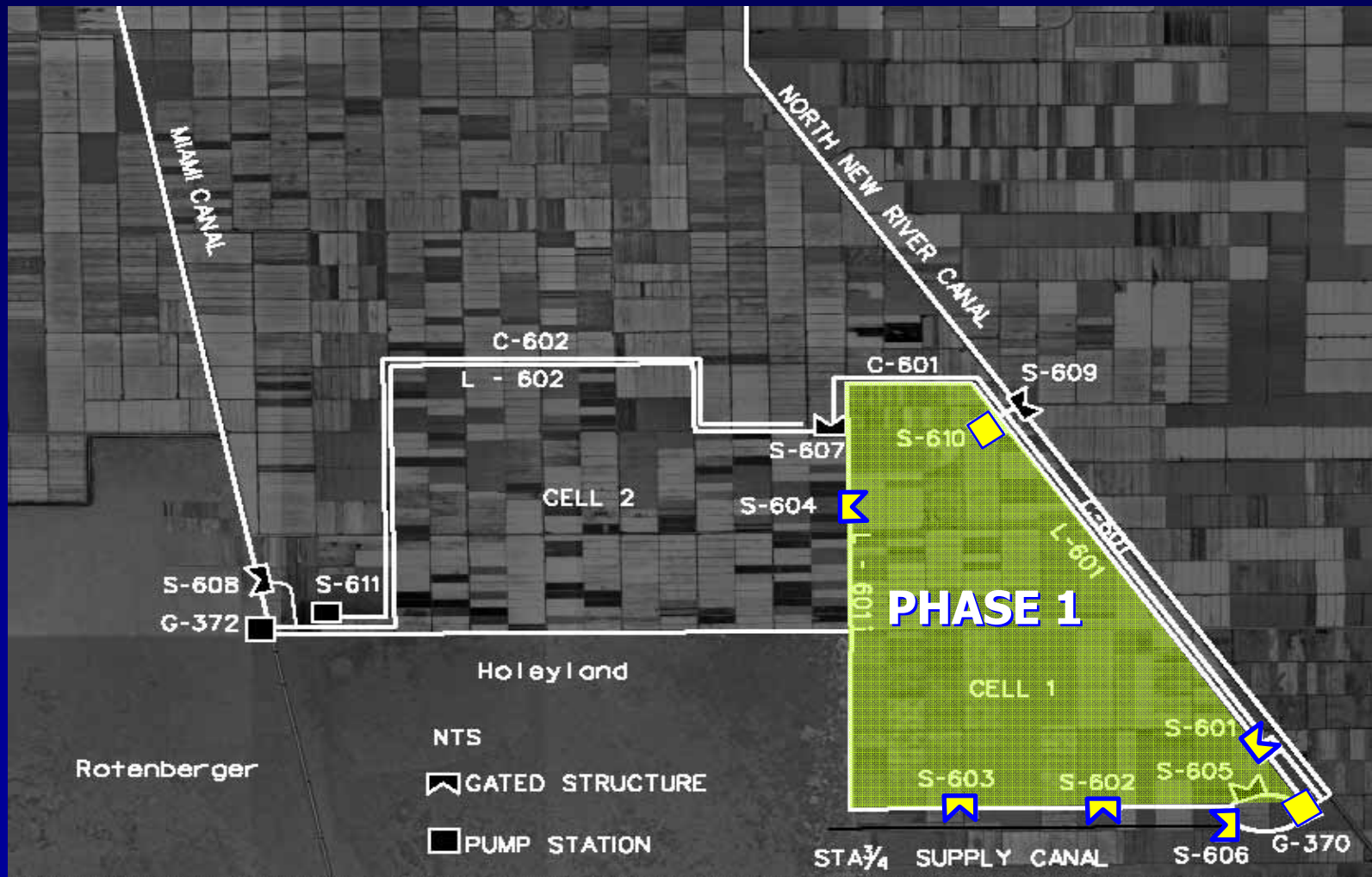
*Note: Design Capacity for each ASR well = 5 million gallons per day (mgd).*

# C-44 Reservoir and STA

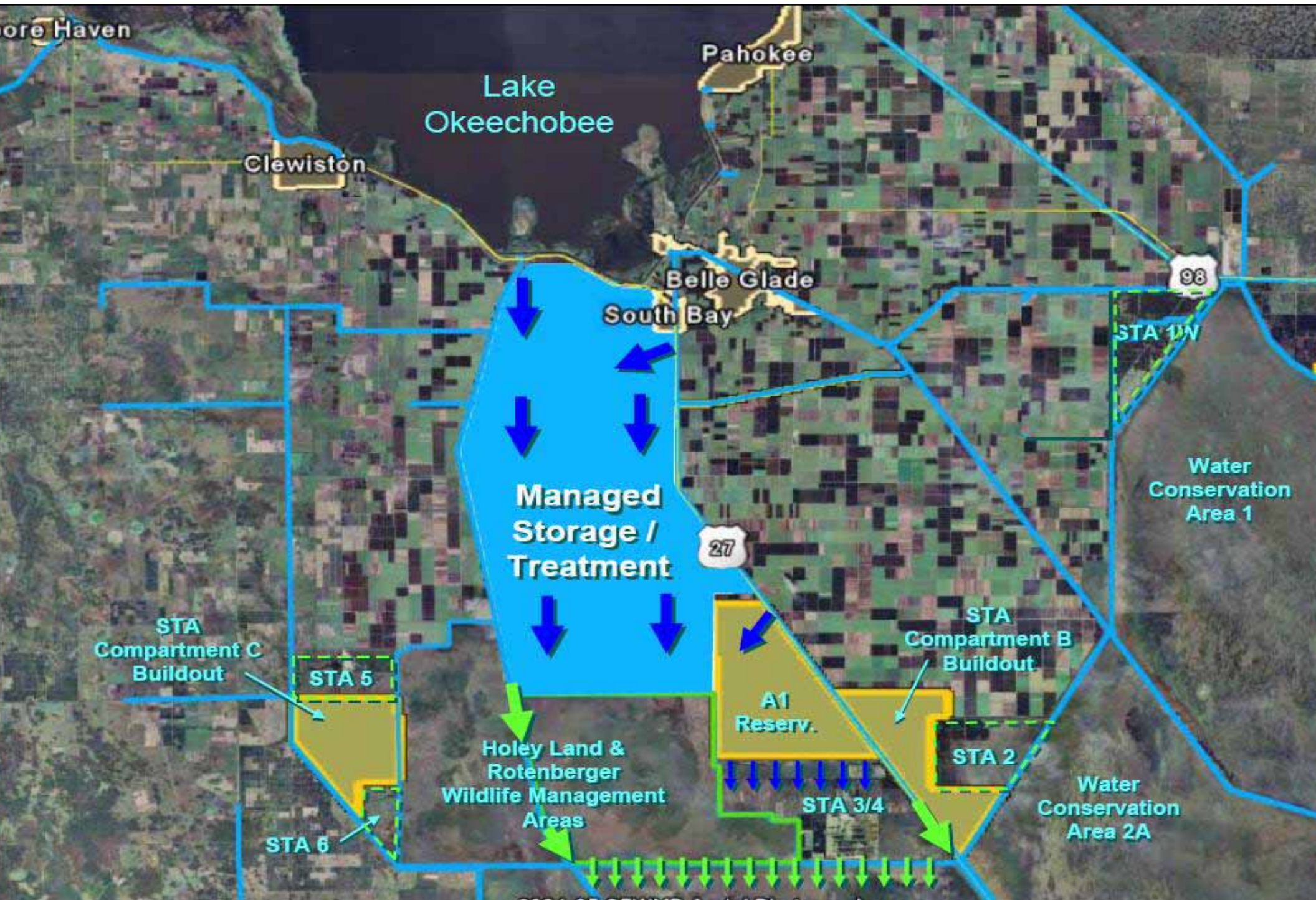
- Storage: 30,000 acre-feet
- STA 2,000 acres
- SFWMD Test Cell



# Everglades Agricultural Area Storage Reservoir

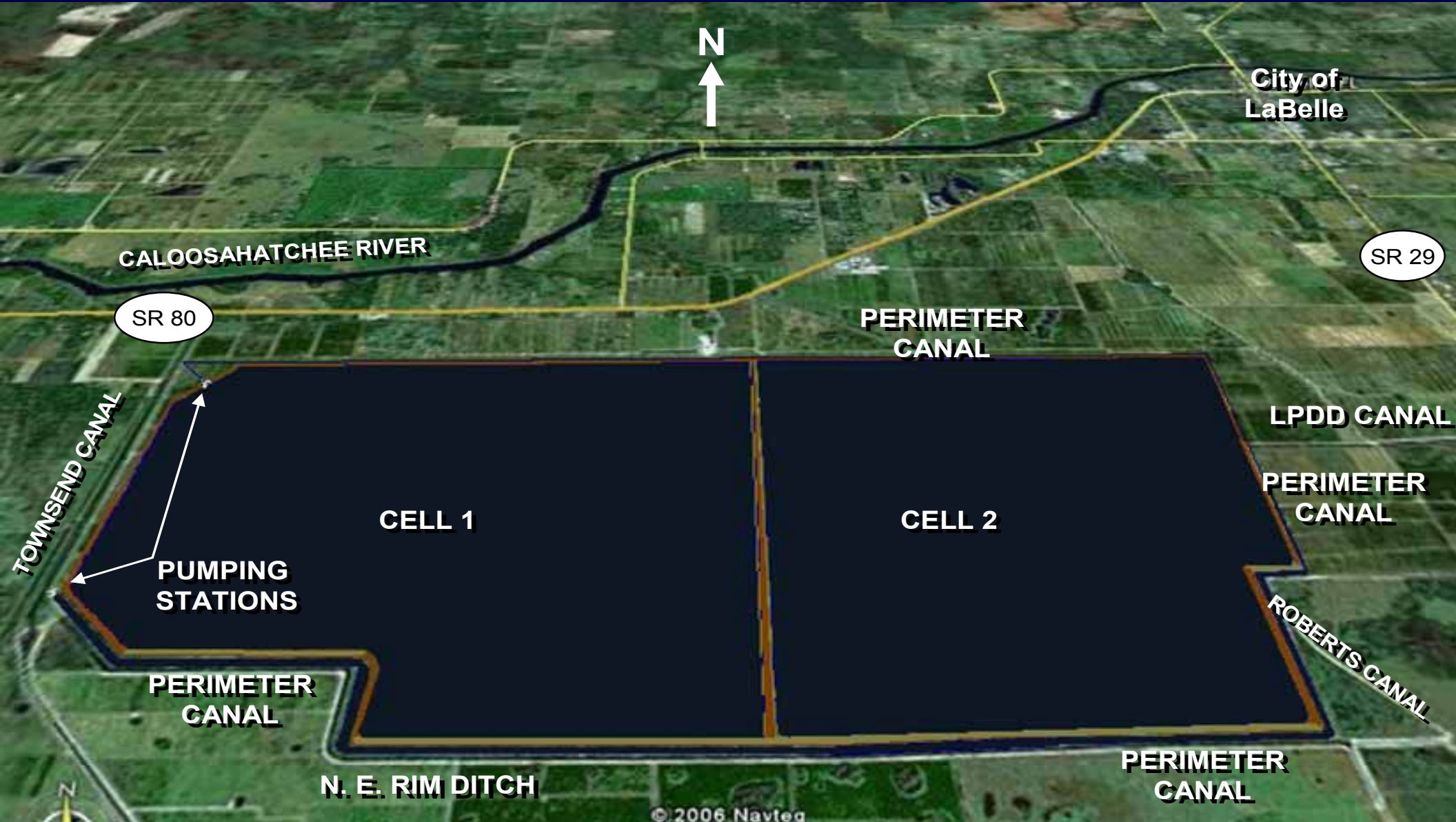




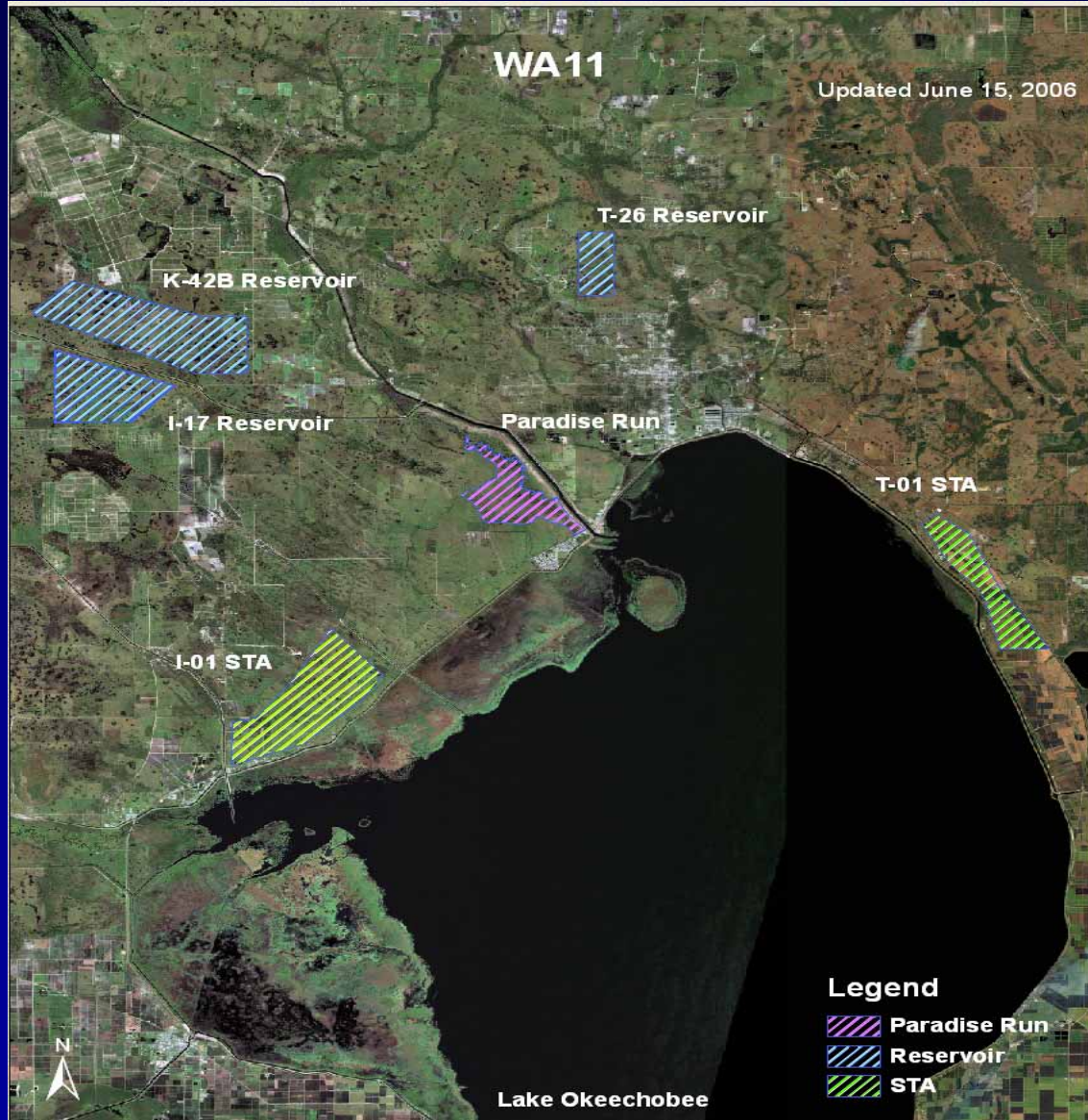




# C-43 Basin West Reservoir



# Lake Okeechobee Watershed

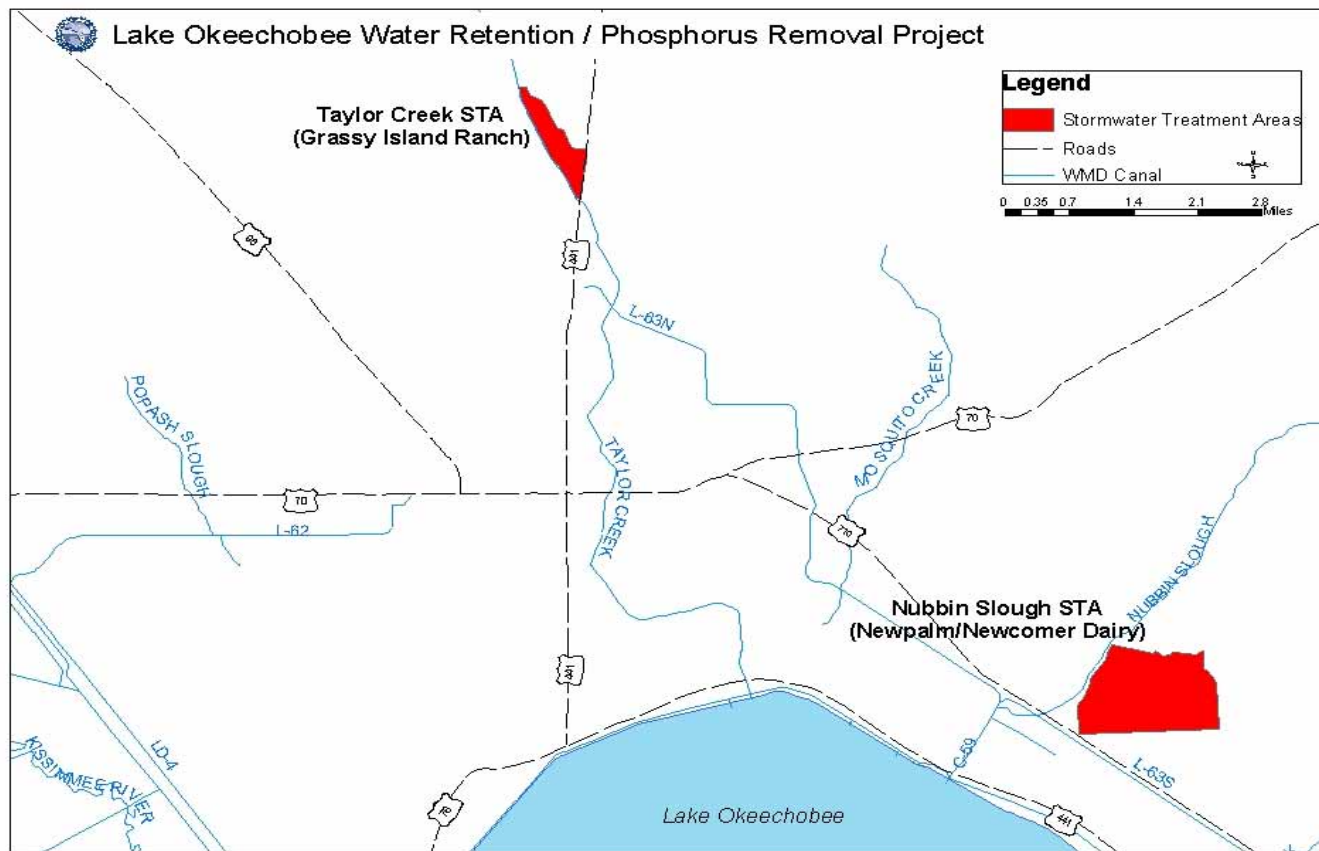


## Water Storage & Treatment

- K42 Reservoir - 161,263 ac-ft
- I-17 Reservoir - 79,560 ac-ft
- T-26 Reservoir - 32,000 ac-ft
- T-01 STA - 3,975 acres
- I-01 STA - 8,044 acres



# Project Locations



Map created on Jan. 19, 2005  
by S. Wallace, OKS

# Taylor Creek STA

- 190 acres
- Located on Taylor Creek
- Contract Amount:  
\$2,872,797
- Former land use: beef  
cattle
- Contract completion: July  
2005



# Nubbin Slough STA

- 780 acres
- Located on Nubbin Slough
- Contract amount: \$8,863,769
- Former land use: dairy
- Contract completion: September 2005





**Questions?**

