



# System-wide Planning for Comprehensive Everglades Restoration Plan

Lessons Learned from the Band 1 Model Run  
Evaluation

August, 2008

*Andrew LoSchiavo, Everglades Partners Joint Venture (Contractor/ Presenter)*

*Jim Vearil, U.S. Army Corps of Engineers (Planning Team Chair)*

*Agnes McLean, Everglades National Park (Planning Team Chair)*

*Lisa Cannon, South Florida Water Management District (Planning Team Chair)*



# Overview

- **Background of CERP System-wide Planning**
- **Incorporating System-wide Planning for CERP**
- **CERP System-wide Planning efforts**
- **Band 1 Example**
- **Lessons Learned**
- **Potential Band 1 Implications**
- **Conclusions**



# Background

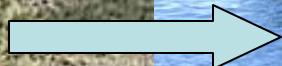
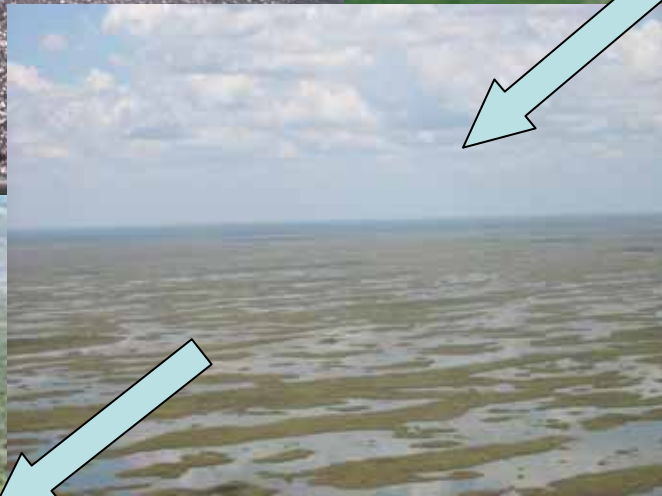
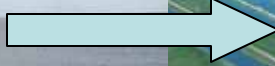
- **CERP Developed Through System-wide Plan Formulation**
- **Uncertainties Identified for the Large Scale Ecosystem Restoration Planning and implementation**
- **Adaptive Management Incorporated Into CERP**
- **System-wide Planning Incorporates New Information To Improve CERP**

# Incorporating System-wide Planning for CERP



- **Comprehensive Planning to:**
  - Address ecosystem restoration and learning benefits
  - Managed system constraints
  - Policy/management constraints
- **System-wide Planning Activities Include:**
  - Periodic system-wide modeling updates
  - Integration of new information into plan
  - Periodic review of comprehensive plan performance
  - CERP updates







# Current System-wide Planning Efforts

- Initial CERP Update
- Master Implementation Sequence Plan
- Band 1
- CERP A Refinement

# Band 1 Task Background

- **South Florida Ecosystem Restoration Working Group (SFER) request**
- **Model Master Implementation Sequence Plan (MISP) Band 1 projects**
- **Integrated Delivery Schedule (IDS) (July 2007) updated the schedule to around 2015**







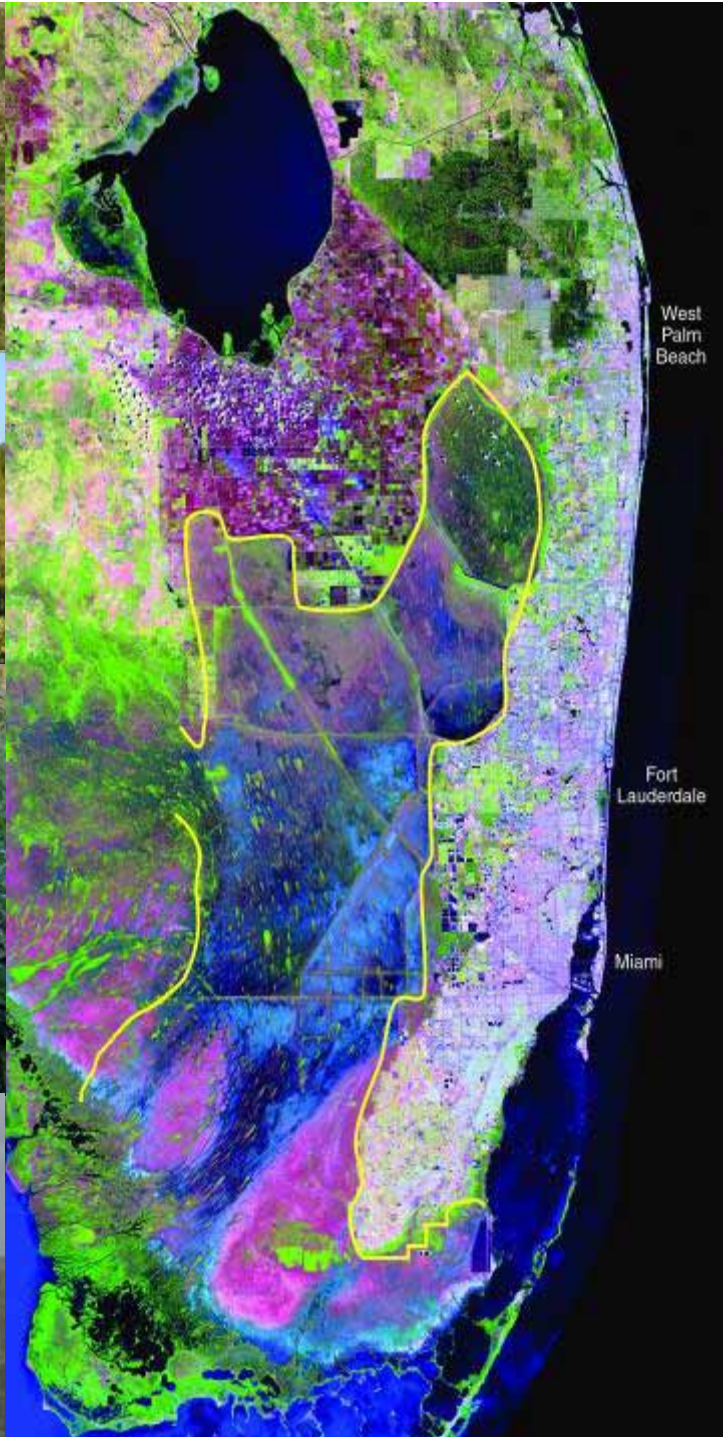
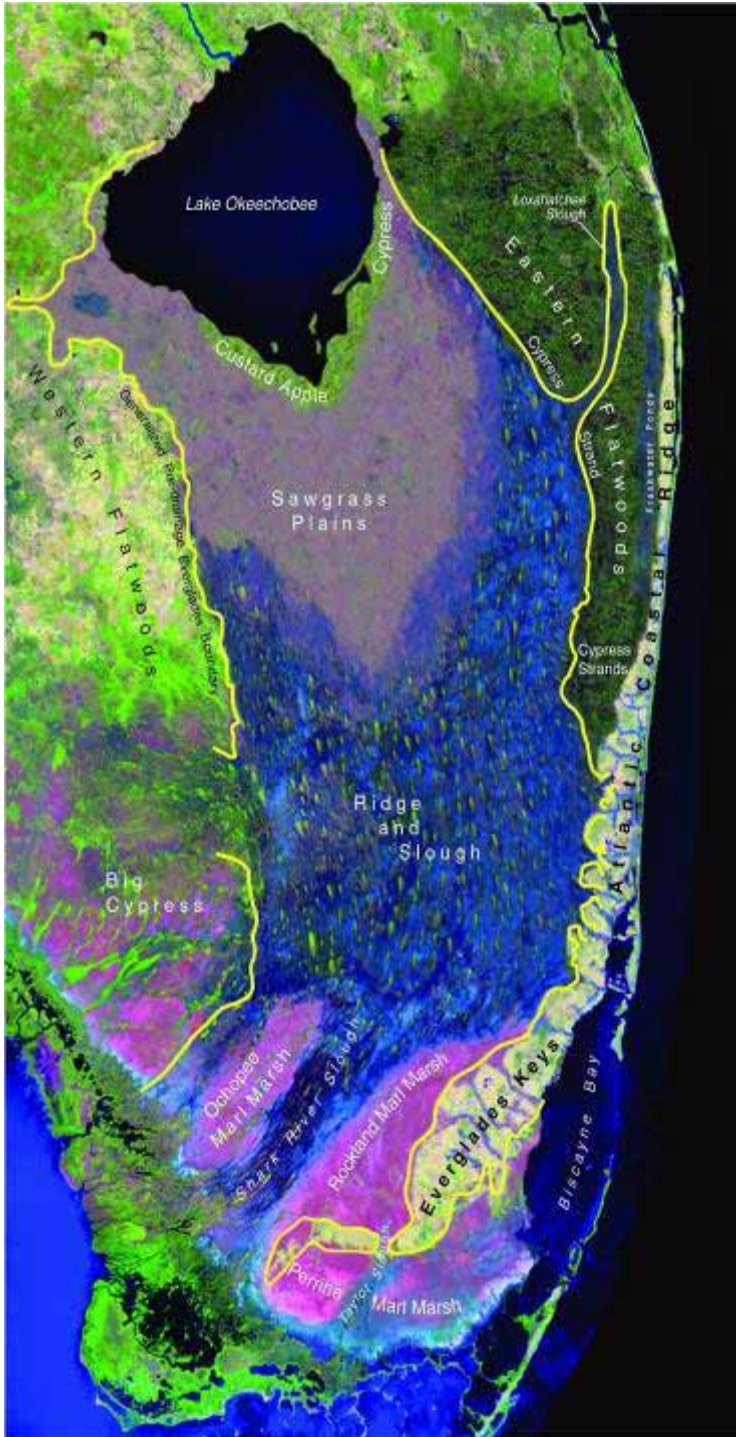
## **Band 1 Model Runs Compared**

- **ECB EAA: Existing Conditions Base**
- **2015 BS: 2015 Future Without CERP Projects**
- **2015 Band 1: Includes First CERP Projects Using Rain Driven Operations (RDO)**

# Example System-Level Performance Constraints/ Assumptions

- **Rain Driven Operations**
- **Some Targets are Inconsistent with Natural Systems Model**
- **Hydrologic Conditions for Cape Sable Seaside Sparrow**
- **Limited Stormwater Treatment Area (STA) flows South**







# Lessons Learned

- **Clear Goals and Objectives**
- **Clear Statement of Model and Planning Assumptions:**
  - **Collectively agree on what planning documents should be used**
  - **Set cut-off dates for model assumption changes**
  - **Coordinate closely with project managers**
  - **Different assumptions will lead to different results**
- **Provide Continuous Feedback to CERP Managers**



# Preliminary Band 1 Model Evaluation Implications

- **Regional Groupings of Projects Provide Measurable Results**
- **Need Total System PMs and Regional Prioritization Methods**
- **Preliminary Band 1 Results Demonstrate Need to:**
  - **Store more water,**
  - **Address water quality, and**
  - **Correctly determine timing of sending water South**

# Conclusions

- **System-wide Planning:**
  - Important role in CERP implementation
  - Important component of CERP's AM Strategy
- **Future system-wide planning efforts:**
  - Sea-Level Rise Sensitivity analysis (Climate Change)
  - System Operating Manual
  - Regional "Watershed Plan Formulation" planning efforts
  - Comprehensive Plan Modification Report, if ever necessary