

BBSEER AND BEYOND: PLANNING FOR RESILIENCE IN CHANGING SEAS

Nicole Niemeyer (Moderator), SFWMD

Jennifer John, USACE

Dr. Ceyda Polatel, USACE

Dr. Khandker Ishtiaq

Andrew Coman, USACE

Dr. Jessica Dell, USACE



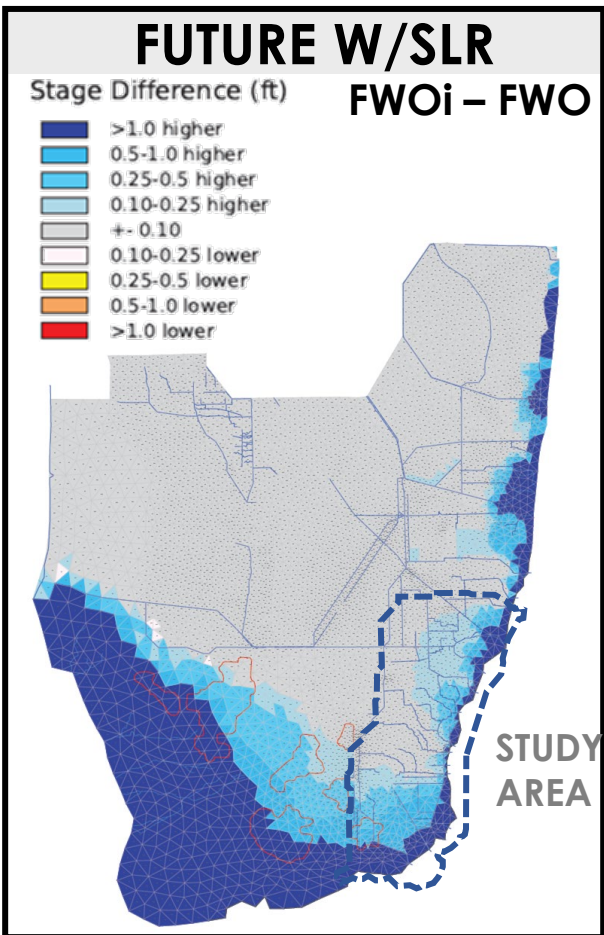
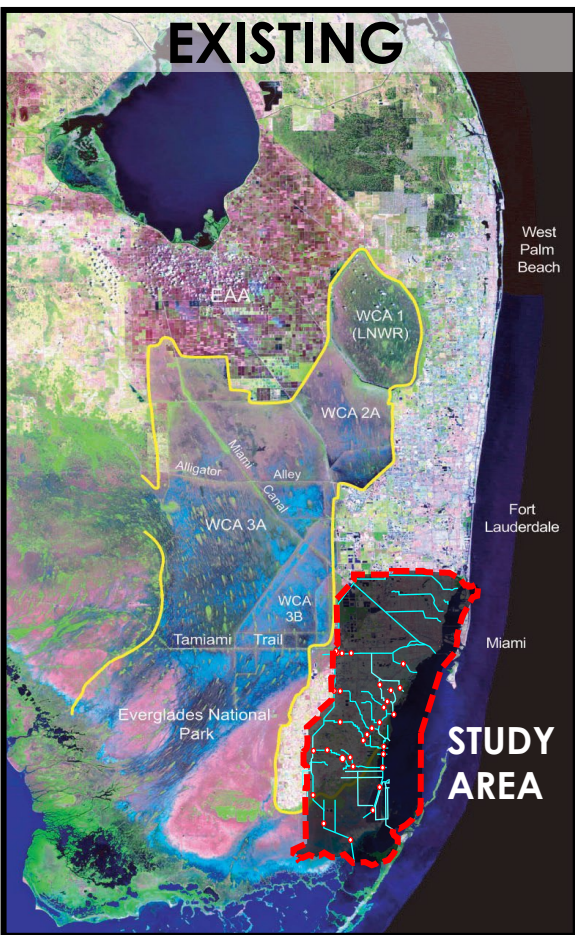
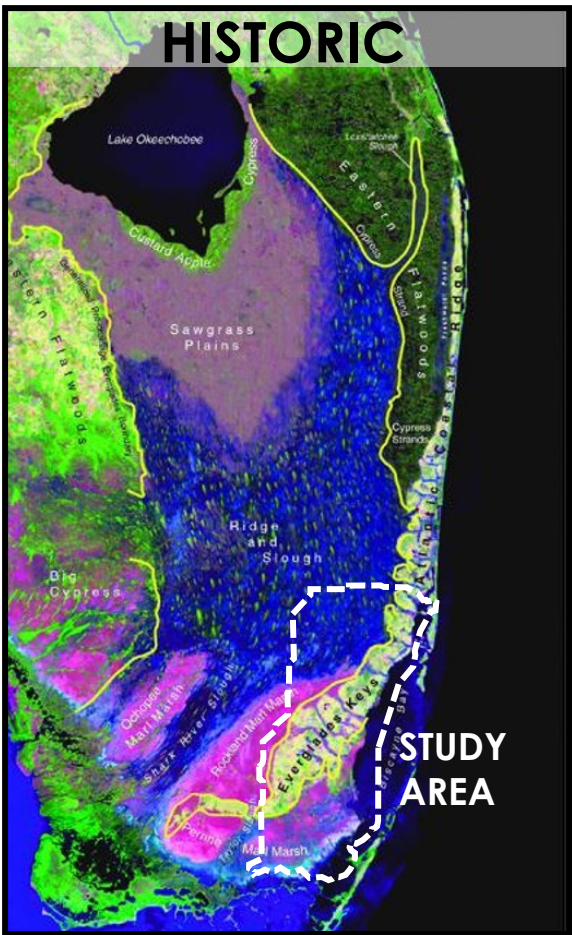
US Army Corps
of Engineers®

Greater Everglades Ecosystem Restoration (GEER) 2025

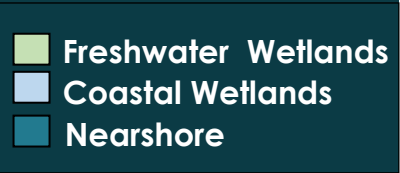


CONDITIONS

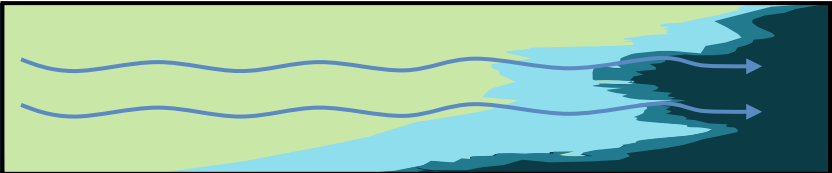
HISTORIC, EXISTING, FUTURE WITHOUT PROJECT



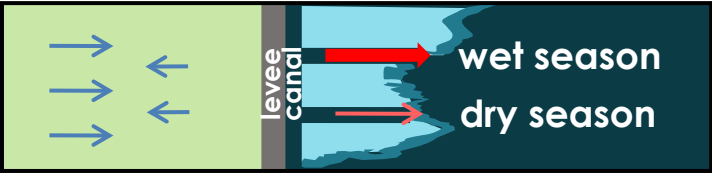
MODIFIED FLOWS



FROM THERE



TO HERE



+ SLR CHALLENGES



RESTORATION RESILIENCE IN PLAN FORMULATION: A COMPREHENSIVE BENEFITS STORY

Jennifer John, USACE (Presenter)

Evan Jonson, USACE

Robert Kirby, USACE

Dr. Bradley Foster, USACE

Andrew Coman, USACE



**US Army Corps
of Engineers®**

Greater Everglades Ecosystem Restoration (GEER) 2025



U.S. ARMY

U.S. ARMY

U.S. ARMY

U.S. ARMY

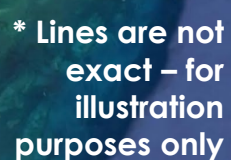
U.S. ARMY

U.S. ARMY

U.S. ARMY

U.S. ARMY

U.S. ARMY

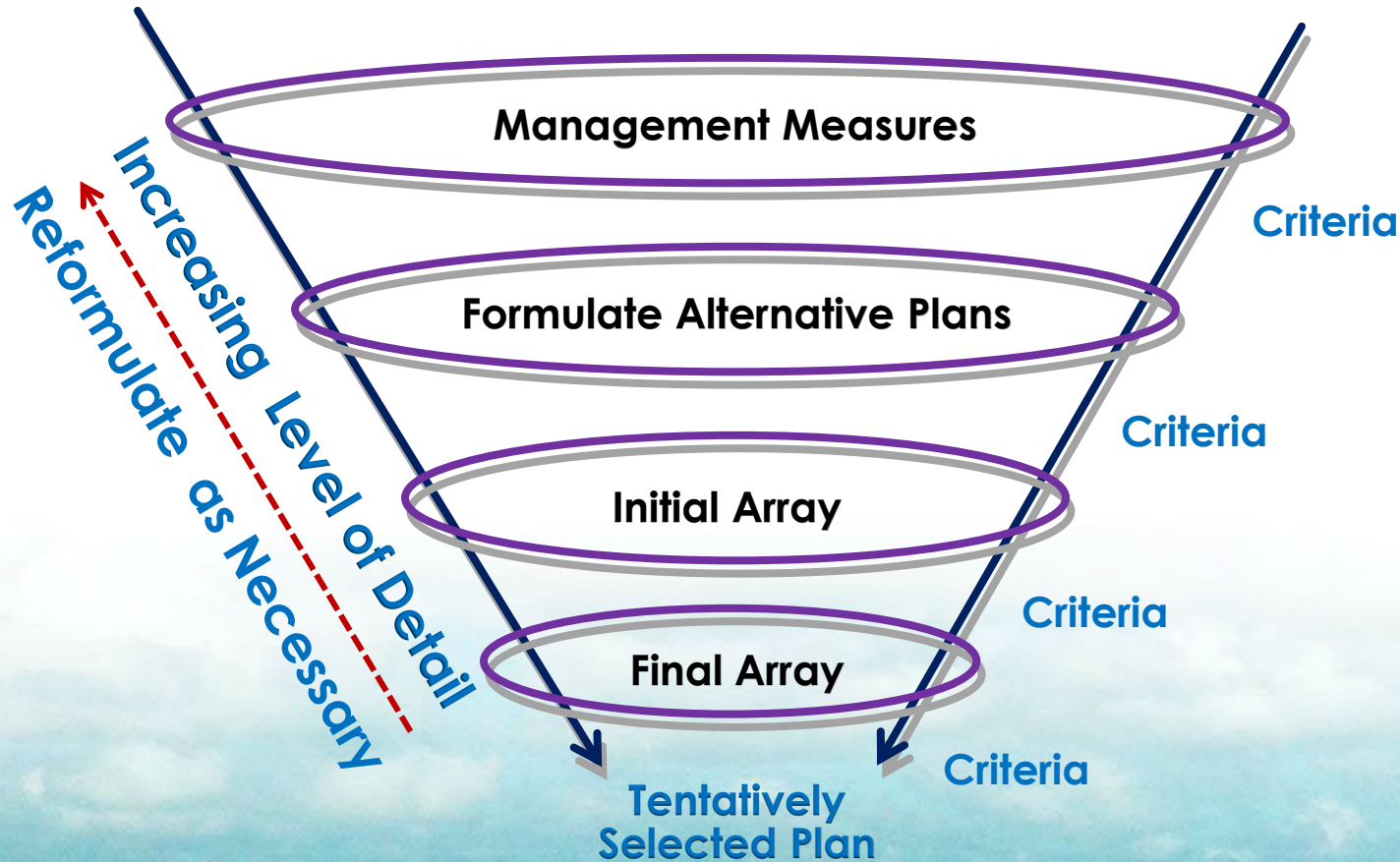




U.S. ARMY



PLAN FORMULATION PROCESS



Step 1: Specify Problems and Opportunities

Step 2: Inventory and Forecast

Step 3: Formulate Alternative Plans

Step 4: Evaluate Alternative Plans

Step 5: Compare Alternative Plans

Step 6: Plan selection



U.S. ARMY



“OLD SCHOOL” ECONOMIC EVALUATION

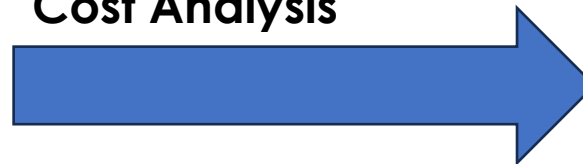
Economic evaluations of alternative plans based only on the study's primary purpose



Benefit Cost Ratio



Cost Effectiveness
and Incremental
Cost Analysis





U.S. ARMY

“NEW SCHOOL” COMPREHENSIVE BENEFITS ANALYSIS

USACE Policy Directive, January 2021



National Ecosystem Restoration

- Non-monetary effects on ecological, cultural, and aesthetic resources including the positive and adverse effects of ecosystem restoration plans.



National Economic Development

- Increases in the economic value of the goods and services that result directly from a project.



Regional Economic Development

- Increases in the effect on employment and demand for local goods and services not captured by National Economic Development.



Other Social Effects

- Effects on societal and individual health and human safety.





COMPREHENSIVE BENEFITS ARE NOT...



Gathering data outside of the main project purpose.

Justification to select a non-cost-effective plan.

The need to quantify or capture every possible benefit from a project.





U.S. ARMY

COMPREHENSIVE BENEFITS ARE...



Utilizing existing data from alternative plan modeling.

A more complete look at alternative plan outcomes.

A way to differentiate between similar alternatives.

An opportunity to quantify outcomes that previously were not considered in alternative evaluations.

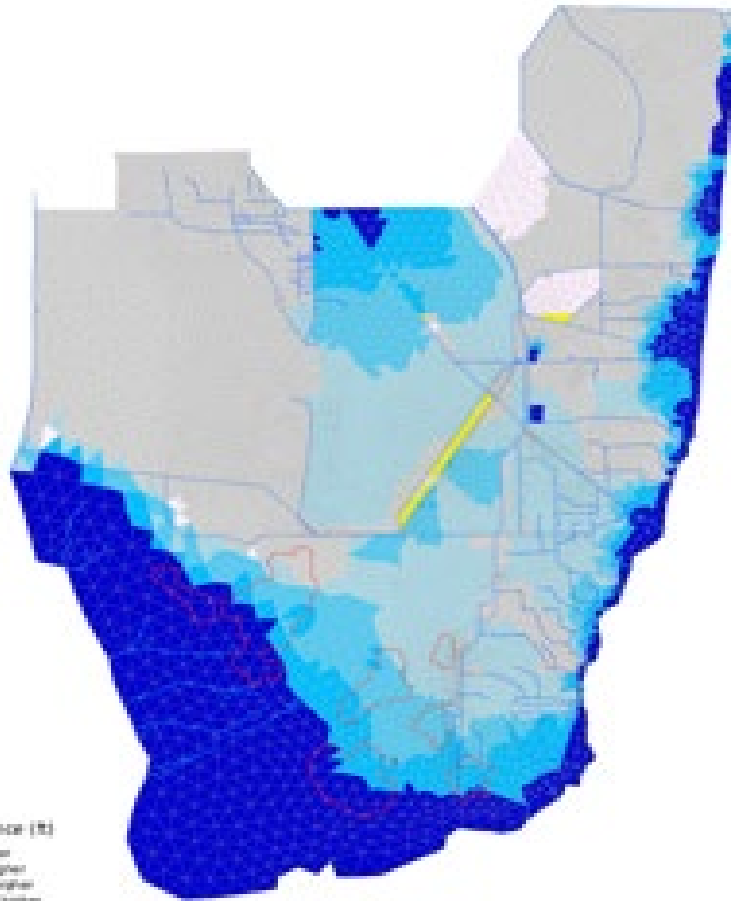


U.S. ARMY

BBSEER COMPREHENSIVE BENEFITS



Average Annual Stage Difference in POS
1963-2018



RSM GLADES (RSMGL)

Illustrates Hydrology
(e.g.; durations/depths)

Answers how we can best
capture excess water and get
it to where it is needed

BISCAYNE BAY SIMULATION MODEL

How changes in hydrology
affect nearshore salinity levels
and habitat

BISECT

How changes in hydrology
affects salinity in the rootzone
of wetland habitats

MD RSM

Provides assurances that
we are maintaining
savings clause levels of
water supply & flood
protection

	HABITAT	POTENTIAL RESTORATION (ACRES)
	WETLAND FOREST	12,492
	SAWGRASS/WET PRAIRIE	54,810
	TRANSITIONAL ZONE	6,503
	WHITE ZONE	18,020
	COASTAL FOREST (MANGROVE)	18,619
	NEARSHORE WATERS	9,782 (SHORE TO 500 METERS)
	TOTAL	120,226

SW
Biscayne
Bay

Coastal
Forest

Nearshore
waters

Wetland
Forest

Sawgrass/ Wet Prairie

Southern Glades Area

White
zone

Transitional

Nearshore
waters

Coastal
Forest

FWOI – ECB22





U.S. ARMY

NATIONAL ECONOMIC DEVELOPMENT (NED)

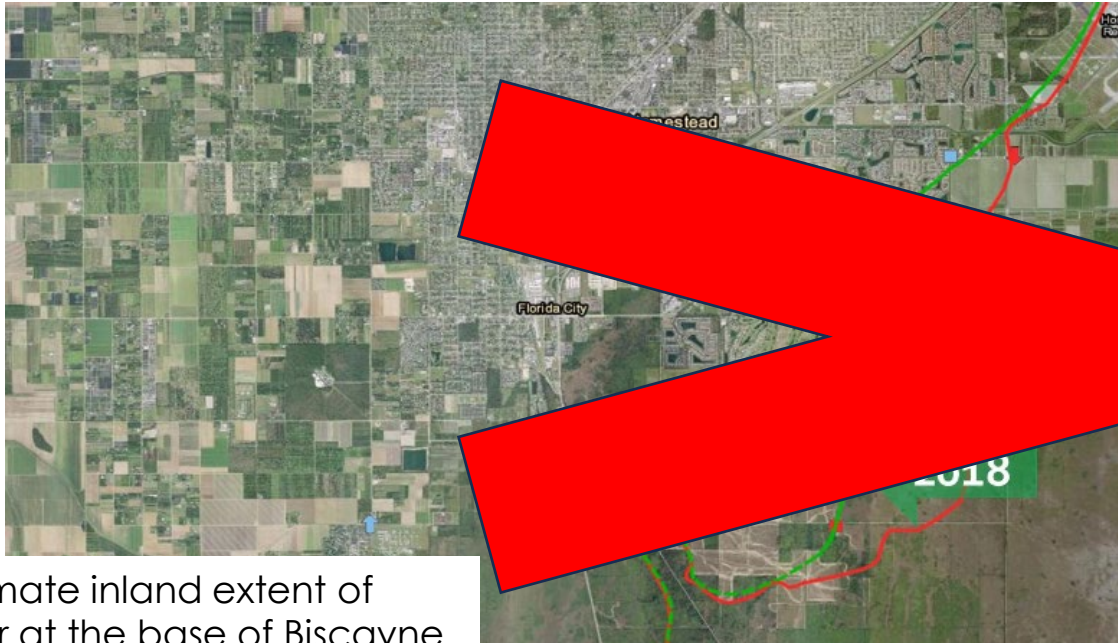


**What we thought we could evaluate:
(spoiler: it's not what we did)**

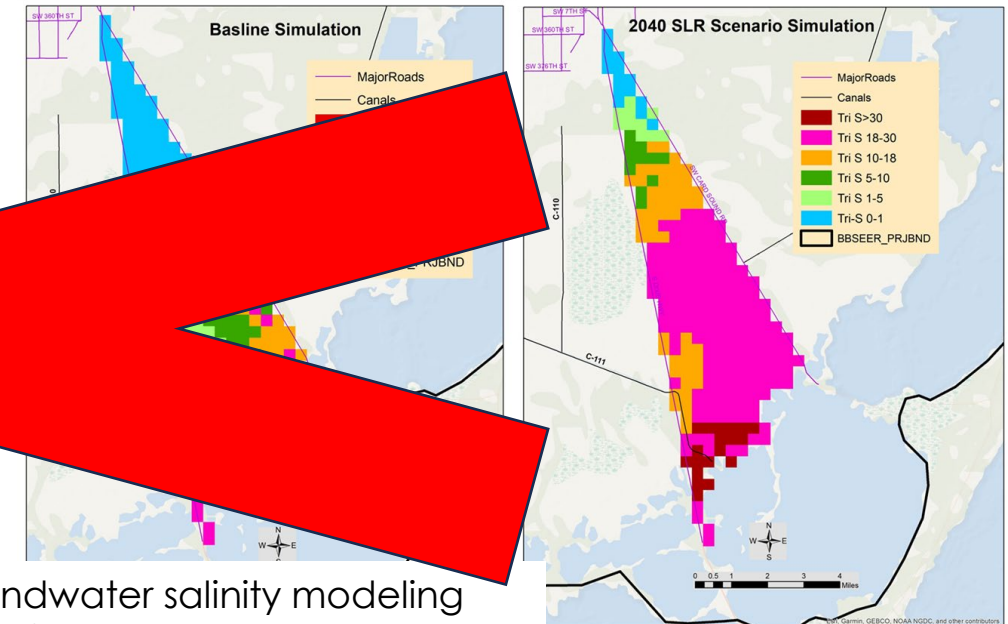
**Land remaining vegetated and
not transitioning to open water.**

**Keeping agricultural lands and
well water fresh.**

**Reducing storm damages with
coastal vegetation and mangroves.**



Approximate inland extent of
saltwater at the base of Biscayne
aquifer, courtesy USGS



Groundwater salinity modeling
results from BISECT.



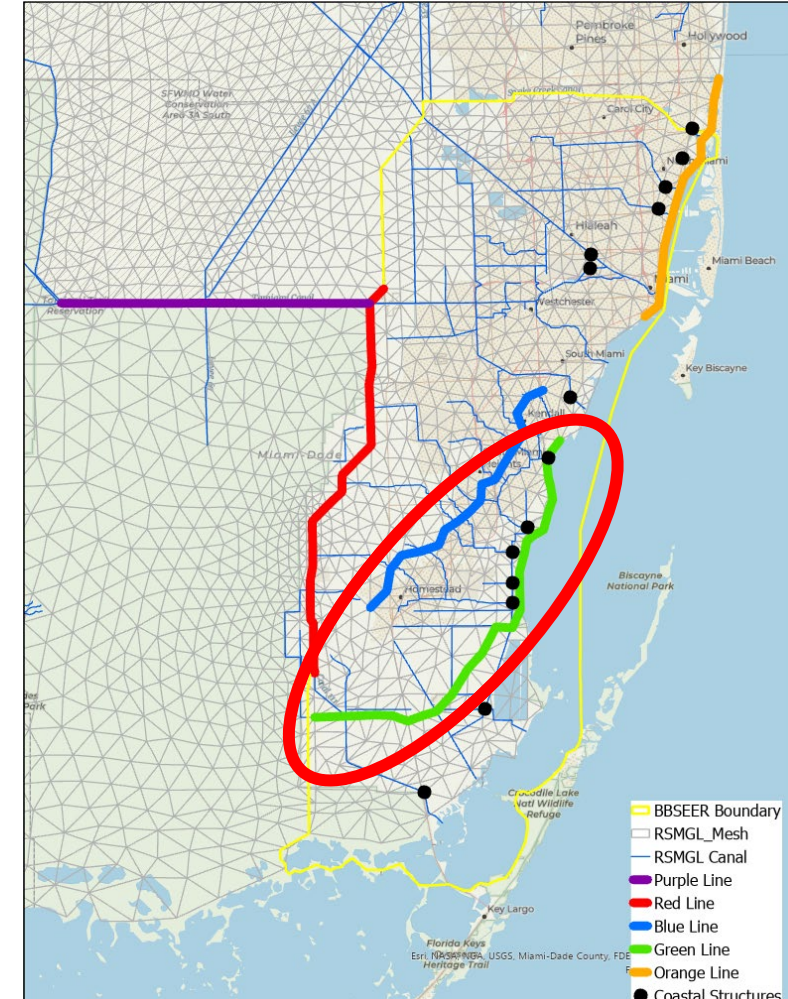
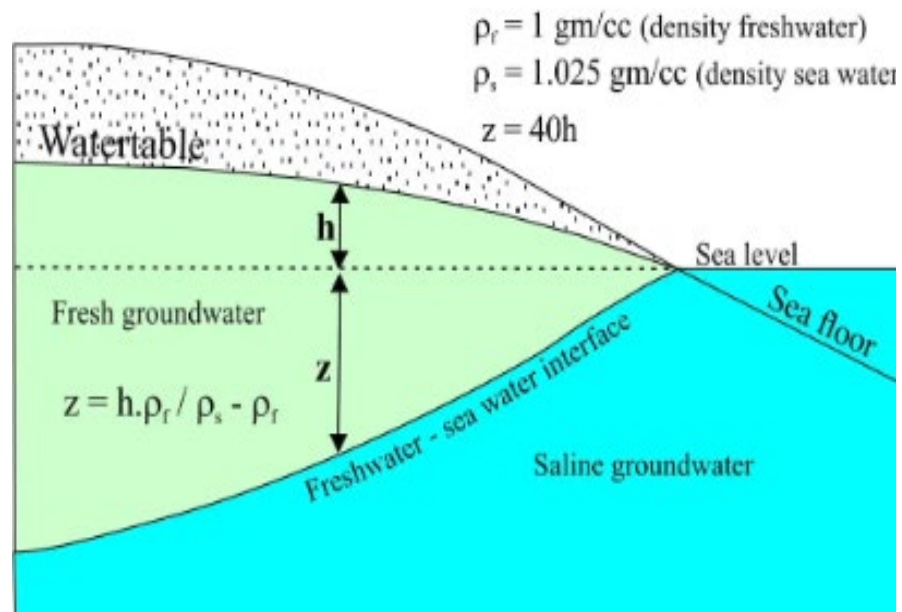
U.S. ARMY

NATIONAL ECONOMIC DEVELOPMENT (NED)



What we could ACTUALLY evaluate:

Ghyben-Herzberg Principle





LESSONS LEARNED



- **ALWAYS** ask a modeler if data extraction or post-processing is available.
- Start brainstorm of ideas early.
- Be as creative as possible during brainstorming – no idea is a bad idea.





THANK YOU!!!

- Dr. Bradley Foster
- Robert Kirby
- Evan Jonson
- Andrew Coman
- Dr. Chloe Vorseth
- ...and the whole BBSEER Team!