

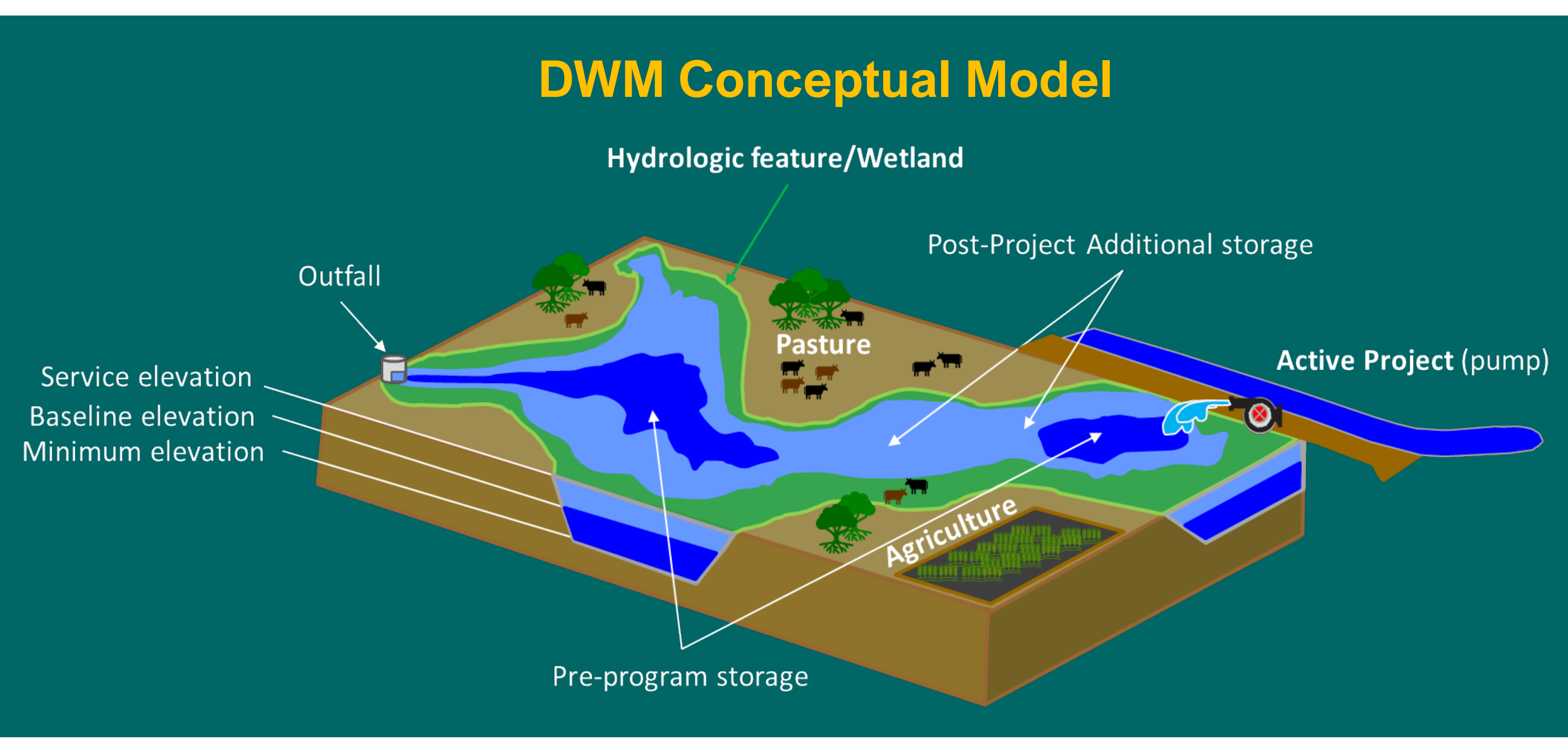
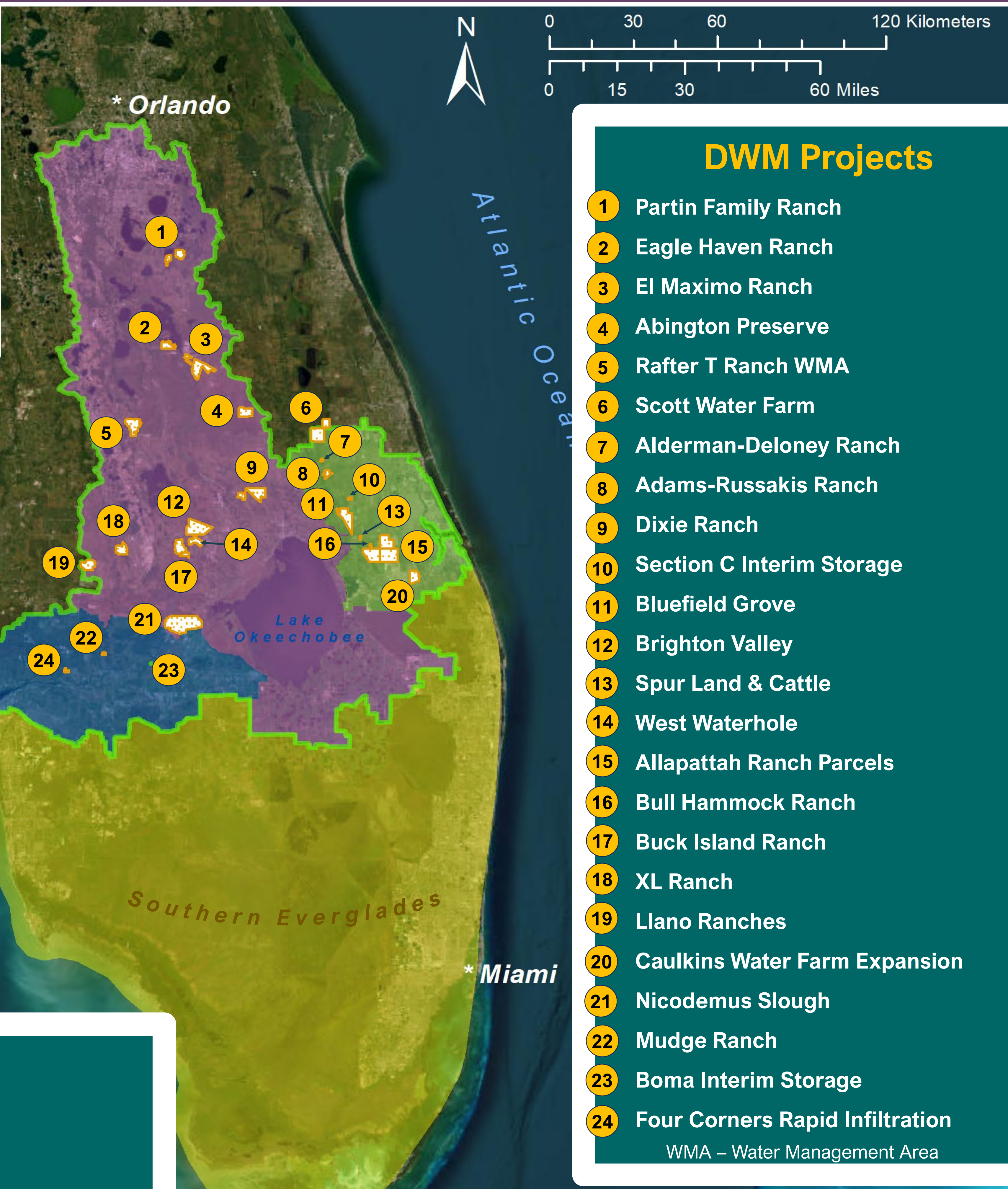
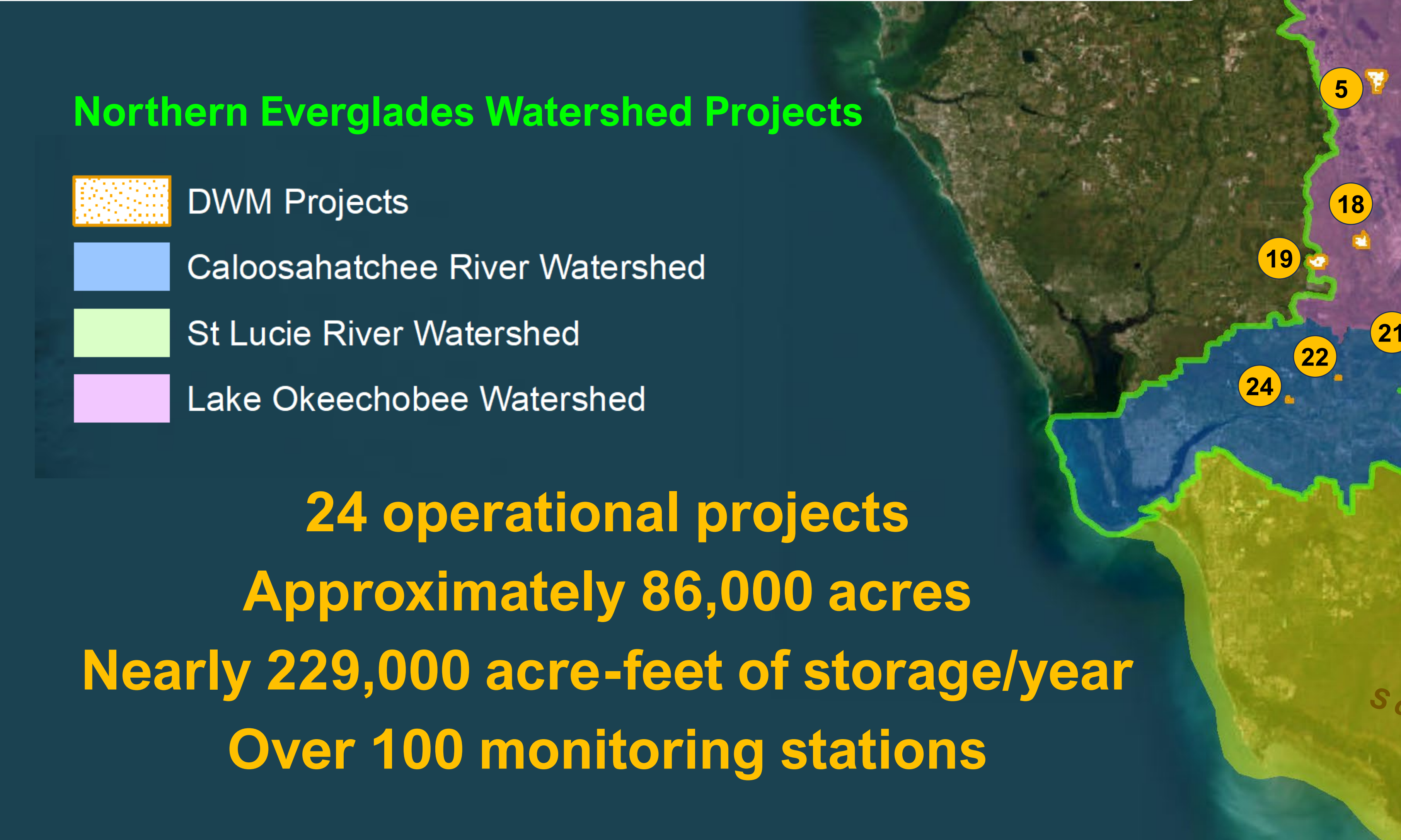


# Northern Everglades Dispersed Water Management (DWM)

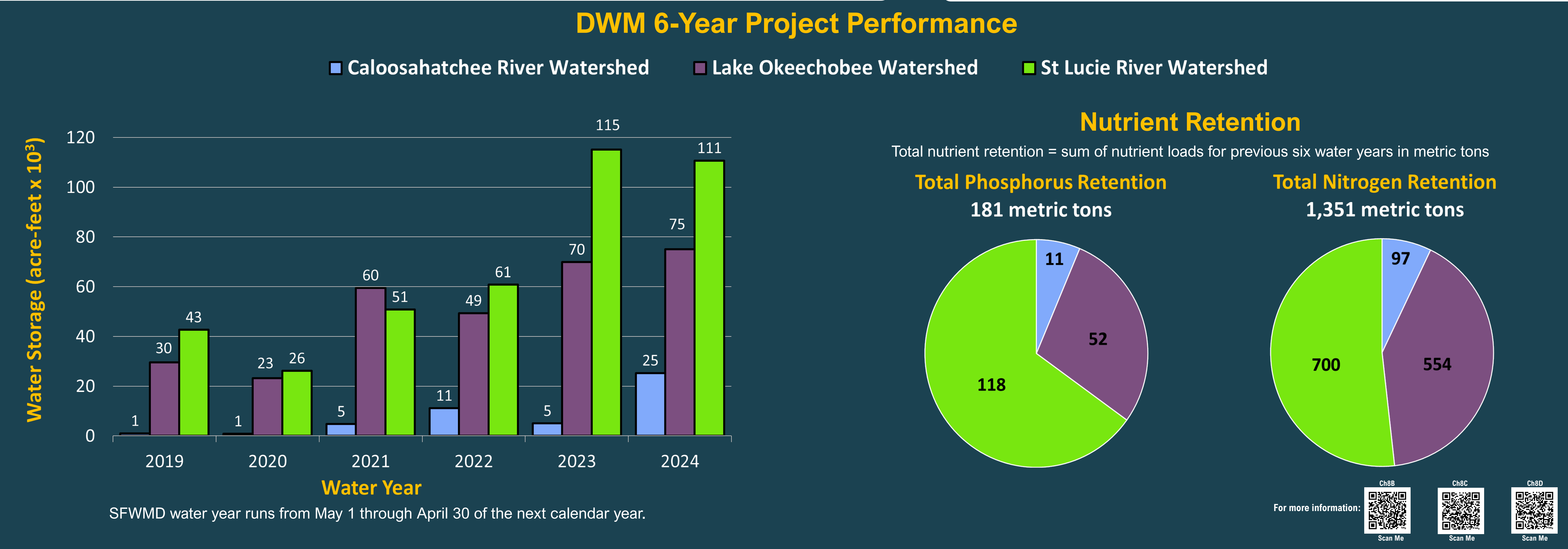
MANUEL F. ZAMORANO, CHRISTIAN AVILA, ANTHONY BETTS, CRISTINA GAUTHIER  
Everglades & Estuaries Protection Bureau

Since Water Year (WY) 2019 over 760,000 acre-feet of water has been stored by the DWM program

- ❖ Dispersed water is defined as shallow water distributed across parcel landscapes using relatively simple structures.
- ❖ Utilized across SFWMD area on publicly-owned lands or through public-private partnerships.
- ❖ Private landowner involvement typically includes cost-share cooperative projects, easements, or payment for environmental services.



- DWM Project Types**
- Active projects**  
Capture direct rainfall and have the capability to pump excess surface water from the regional system.
- Passive projects**  
Store direct rainfall via modifications to the existing drainage infrastructure such as installation of ditch blocks, new culverts with risers, etc.







# Northern Everglades Dispersed Water Management (DWM)

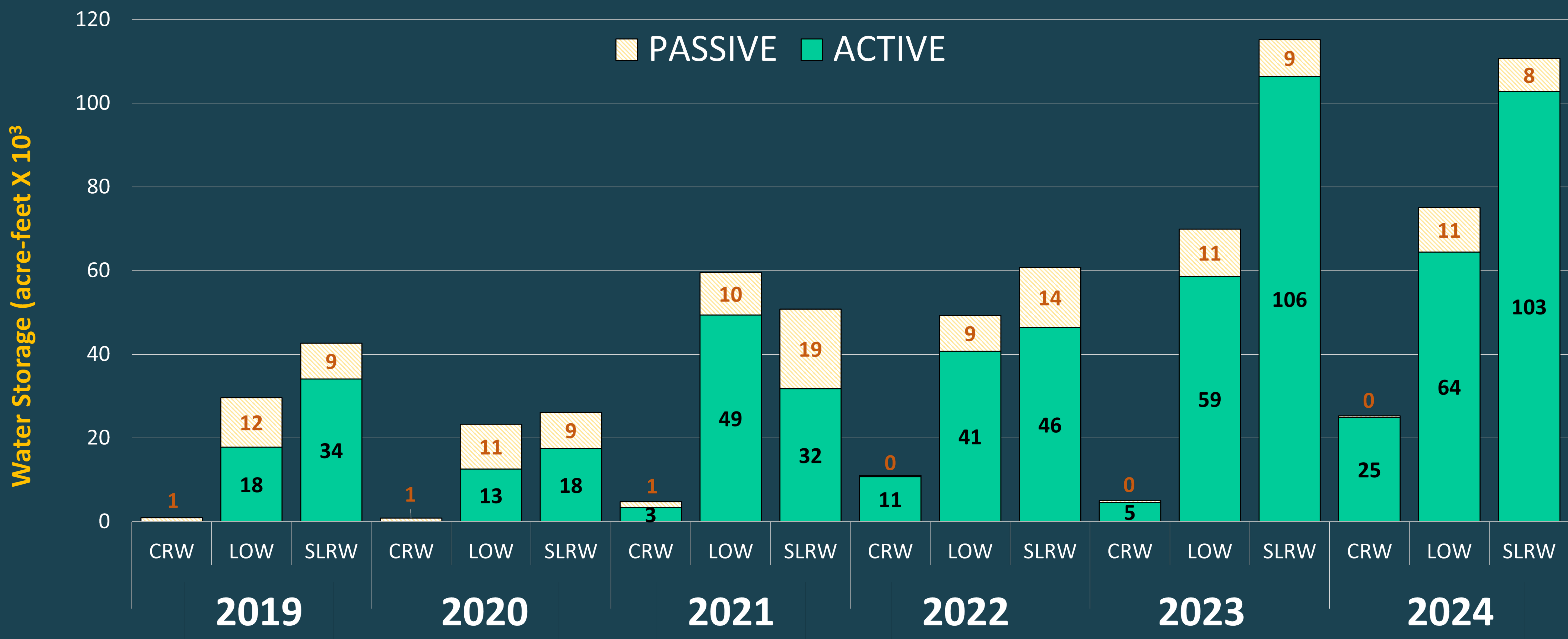
MANUEL F. ZAMORANO, CHRISTIAN AVILA, ANTHONY BETTS, CRISTINA GAUTHIER  
Everglades & Estuaries Protection Bureau

## Supplemental Material

### DWM 6-Year Project Performance

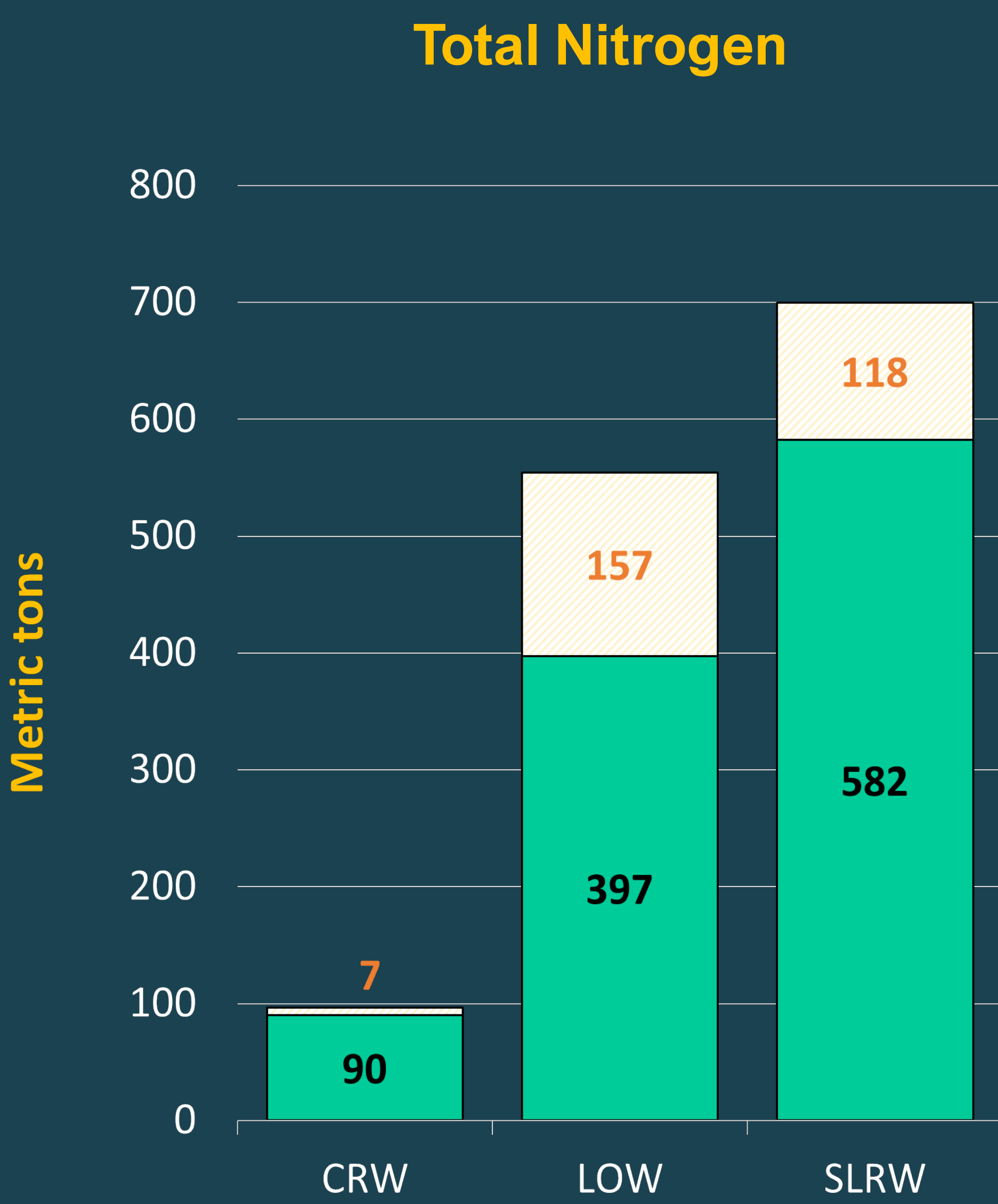
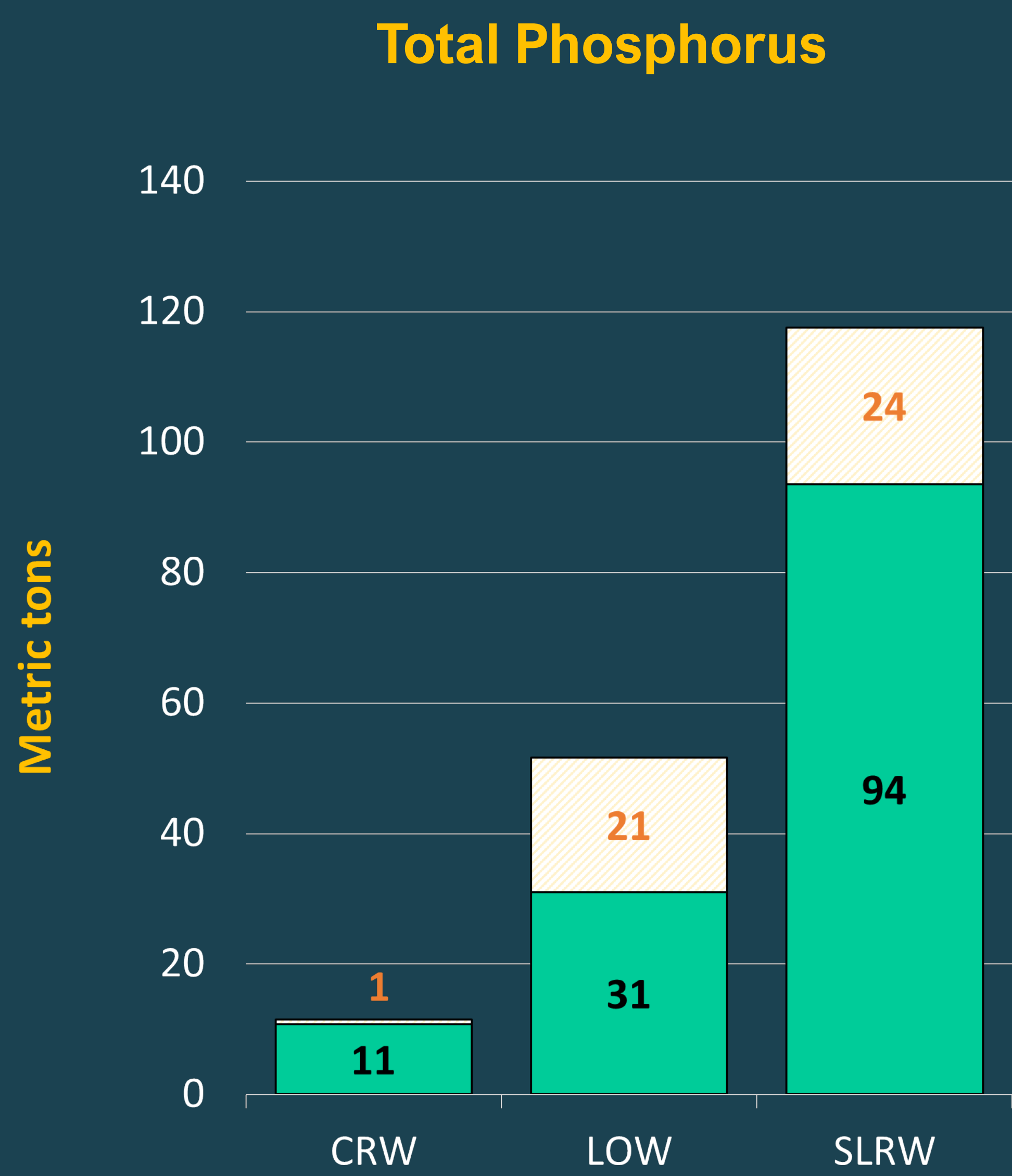
Caloosahatchee River Watershed (CRW)  
Lake Okeechobee Watershed (LOW)  
St Lucie River Watershed (SLRW)

### Water Storage



SFWMD water year runs from May 1 through April 30 of the next calendar year.

### Nutrient Retention for all 6 Water Years



For more information:



Scan Me