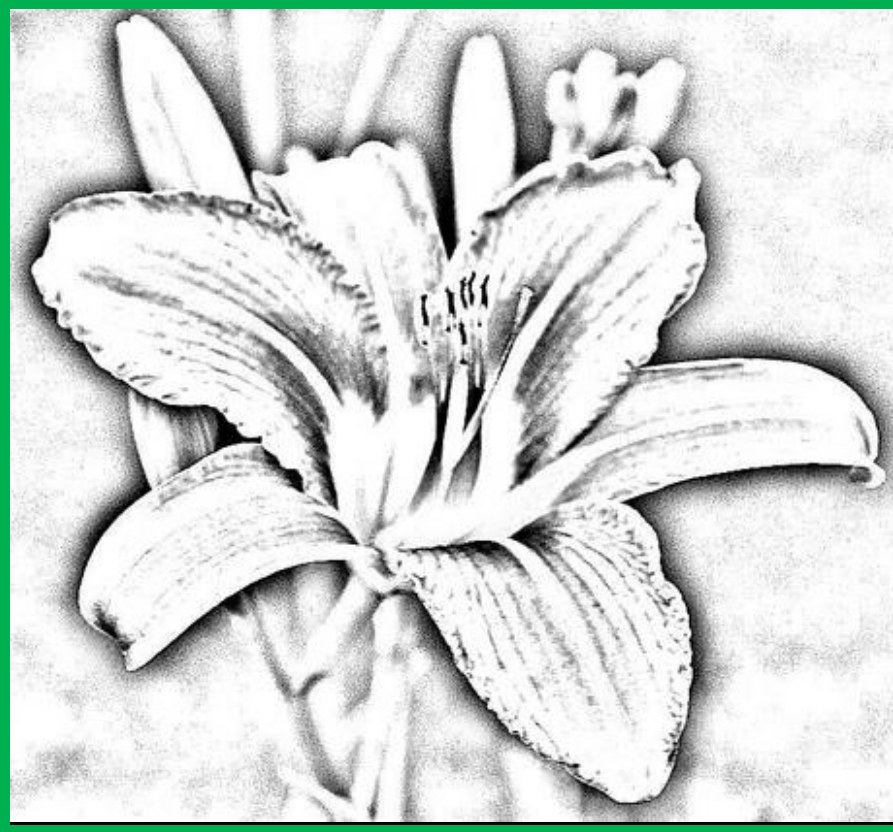




**“Gardening with
Daylilies
in Florida”**

Hemerocallis



From the Greek:
HEMÉRA (day)
KÁLLOS (beauty)

Plant Family:
Formerly in the lily family
(Liliaceae)
Now **reclassified** in a
new family
(Xanthorrhoeaceae,
subfamily
Hemerocallidoideae)

Hemerocallis



**Country of Origin:
Asia**

**Common American
Variety:
Hemerocallis fulva
(Tawny Daylily)**

Daylily Uses in the Landscape



A Border Garden



Mass Planting



Garden Feature



Daylilies

THE AMERICAN HEMEROCALLIS SOCIETY WELCOMES YOU



Photo: Julie Covington

The AHS
lists more
than
75,000
registered
daylily
cultivars
on their
website!

'Gavin
Petit'
2004

T. Petit

2013 Don C. Stevens Award Winner

www.daylilies.org

Daylilies

DISPLAY GARDEN
AMERICAN
HEMEROCALLIS
SOCIETY



AHS DISPLAY GARDENS

AHS DISPLAY GARDENS AND HISTORIC DISPLAY GARDENS

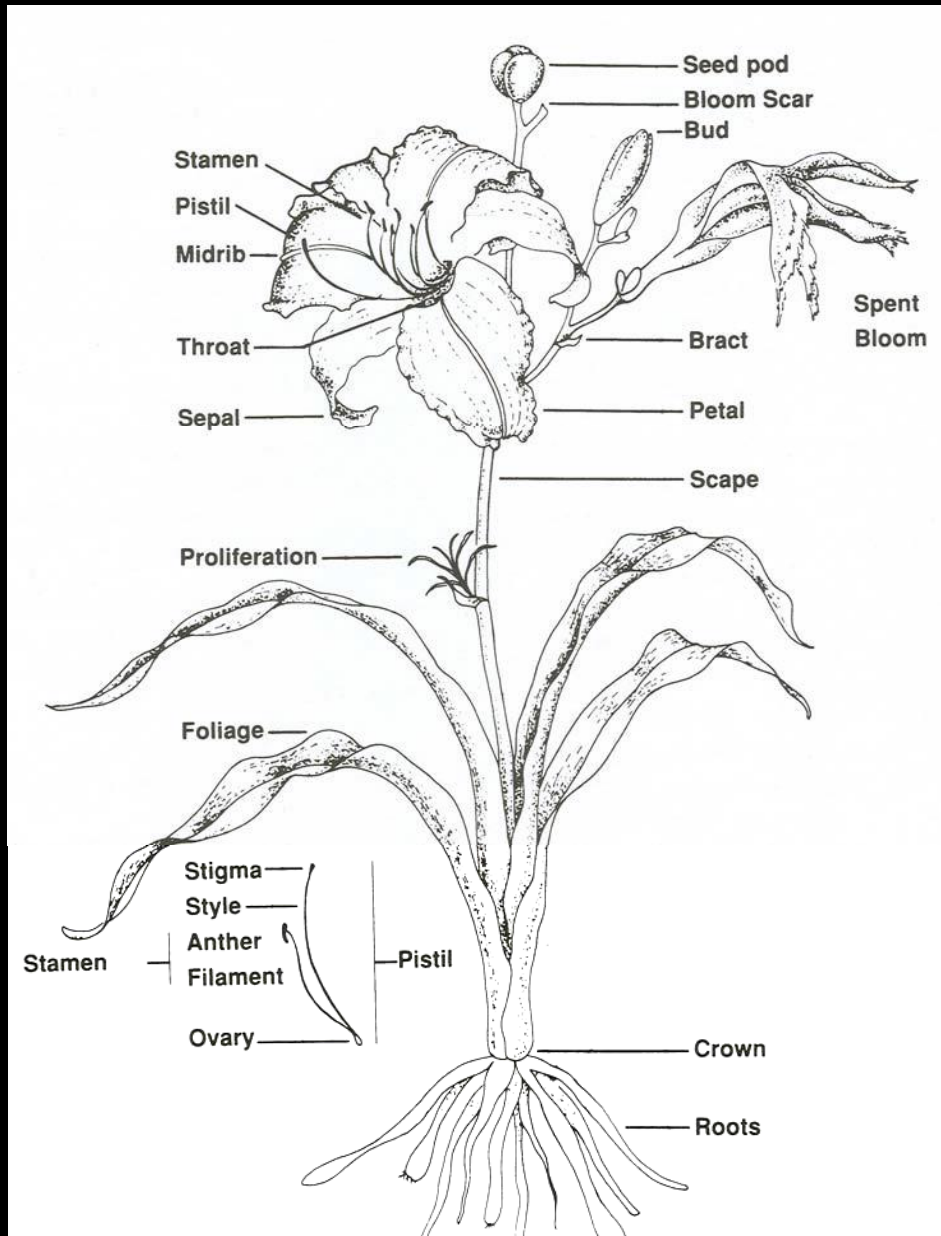


There are over 330 American Hemerocallis Society Display Gardens throughout the U.S. and Canada where you can view a variety of daylilies in a garden setting.

Visit an AHS Display Garden near you to find out more about ways your may be able to add daylilies to your home landscape.



Daylily Basics



Daylily Characteristics

Classified by size and form

Bloom Size Categories:

- 1. Miniature — less than 3" in diameter**
- 2. Small — 3" or more but less than 4½" in diameter**
- 3. Large — 4½" or more but less than 7" in diameter**
- 4. Extra Large – 7" or more in diameter**

Daylily Flower Sizes



Daylily Characteristics

Flower Form Categories:

- 1. Single***
- 2. Double***
- 3. Spider***
- 4. Unusual Form***
- 5. Polymerous***

Daylily Flower Forms

Single:

The Basic Daylily Form -

- 3 petals
- 3 sepals
- 1 pistil
- 6 stamens

Daylily Form: Single



**“Spacecoast Child Star”
(Kinnebrew-J, 2002)**

Daylily Flower Forms

Double:

Extra petals or petaloid (petal-like) tissue lying on or above the normal 3 petals and 3 sepals of an ordinary (single) daylily often creating a peony-like look

Daylily Form: Double



“Nagasaki” (Kirchhoff-D, 1978)

Daylily Form: Double



“Night Embers” (Stamile, 1997)

Daylily Characteristics

Spider:

Petals segments have a length-to-width ratio of 4:1.

Length -

measured with the fully extended

Width -

***taken at the widest point,
as the flower grows naturally***

Daylily Form: Spider



“Bali Watercolor” (Stamile, 2002)

Daylily Characteristics

Unusual Form:

*Distinctive petal or sepal shapes,
or a combination of both on
all 3 petals or all 3 sepals
Based ENTIRELY on the
form of the flower,
not on color or patterns*

Daylily Form: Unusual Form



“Lunacy” (Morss, 2003)

Daylily Form: Unusual Form



“Rodeo Clown” (Payne, 2001)

Daylily Characteristics

Polymerous:

- extra whole tepals (sepals and petals) in the two tepal whorls of a flower
- extra sepals and petals evenly spaced in their respective whorls, unlike double daylilies in which the extra petals or petaloids are stacked upon or lie above the ordinary petals
- extra stamens: eight if there are four petals or ten for five petals, rather than the usual six

Polymerous



**“Swim,
Bike, Run”
(Baxter,
2011)**

Polymerous

**“Cherokee
Vision”
(Reinke,
2000)**



Daylily Characteristics

SUBFORMS

***Basic shapes that have traditionally
been used to describe daylilies.***

***Trumpet; Circular; Star;
Triangular; Flat; Recurved;
Informal; Multi-Form***

Daylily Subform: Trumpet



“Little Grapette” (Williamson, 1970)

Daylily Subform: Circular



“Hello Screamer” (Hansen-D, 2003)

Daylily Subform: Star



**“Star of
India”
(Roberts,
1992)**

Daylily Form: Triangular



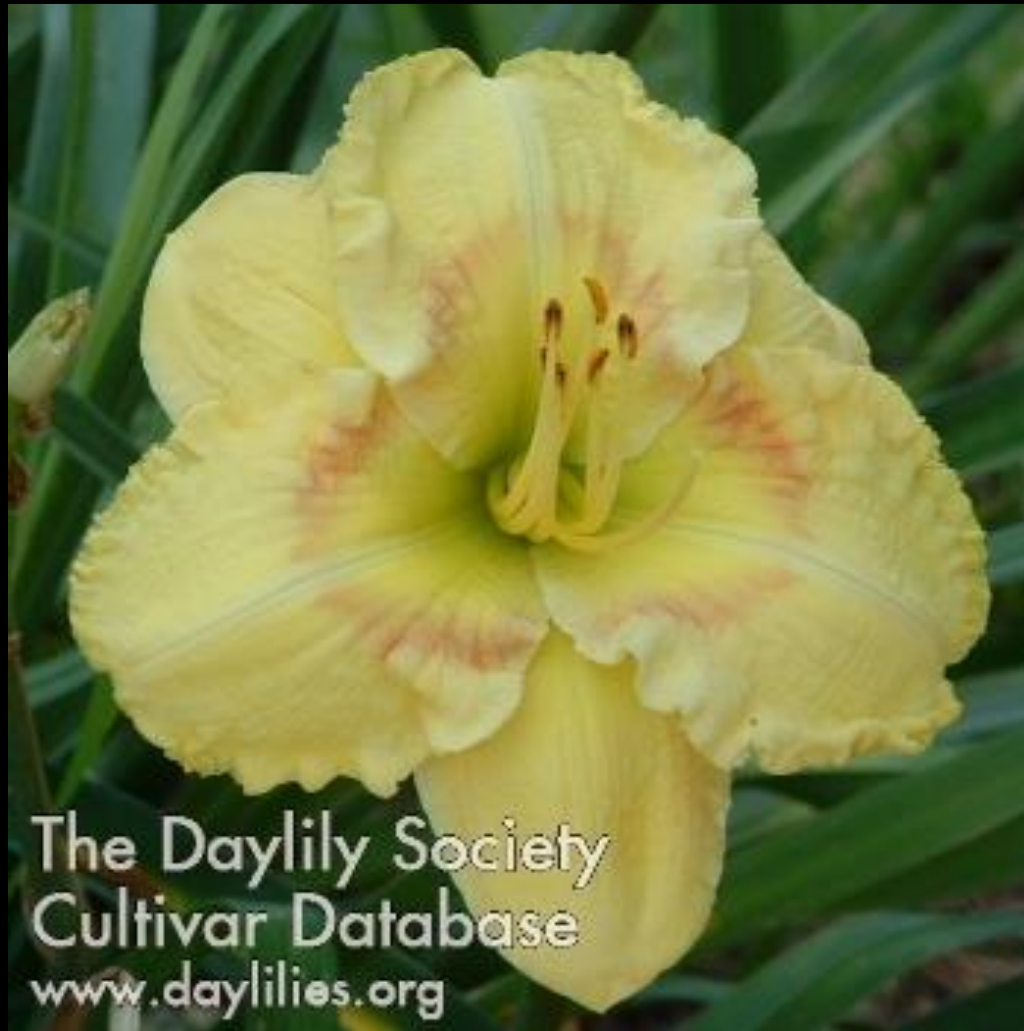
“Coit Tower” (Stamile-Pierce, 2010)

Daylily Subform: Triangular



“Doma Knaresborough” (Petit, 1994)

Daylily Subform: Flat



“Lipstick Traces” (Kaskel, 1994)

Daylily Subform: Recurved



“Scarlet Orbit” (Gates-L., 1984)

Daylily Subform: Informal



**“Sacred Ibis”
(Lambertson,
2007)**

Daylily Form: Multiflorum



“Malicious Rumors” (Abajain, 2002)

Daylily Characteristics

COLOR AND PATTERN

Modern daylilies display a complex variety of color patterns .

***Selfs; Blends; Polychromes; Bitones;
Reverse Bicolor; Eyes & Bands; Halo;
Watermark; Contrasting Edges;
Contrasting Tips; Dots & Dusting;
Contrasting Midribs; Diamond Dusting***

Daylily Color/Pattern: Self



“Easter Greeting” (Macmillan, 1963)

Daylily Color/Pattern: Blend



**“Autumn
Sojourn”
(Salter, 2005)**

Daylily Color/Pattern: Polychrome



“Polar Dusk” (Stamile, 2010)

Daylily Color/Pattern: Bi-Tone



**“Linda
Touchstone”
(Hansen-D,
2004)**

Daylily Color/Pattern: Reverse Bicolor



“Blueberry Muffin” (Rose, 1998)

Daylily Color/Pattern: Eyed



**“Entering
Warp
Speed”
(Petit, 2004)**

Daylily Color/Pattern: Banded



**“Creole Moon”
(Trimmer,
2007)**

Daylily Color/Pattern: Halo



“Sister Mildred” (Spalding, 1985)

Daylily Color/Pattern: Watermark



**“Off the Deep End”
(Holly-S, 2009)**



**“Roaring Rapids”
(Hansen, 2006)**

Daylily Color/Pattern: Contrasting Edges



**“Running Hot”
(Stamile, 2007)**

Daylily Color/Pattern: Contrasting Edges



**“Cranberry
Zinger”
(Rogers, 2005)**

Daylily Color/Pattern: Contrasting Tips



**“Tipped In Rouge”
(Stamile, 2006)**

Daylily Color/Pattern: Dots/Dusting



“Micro Dots” (Trimmer, J., 2004)

Daylily Color/Pattern: Dots/Dusting



“Amethyst Veil” (Morss, 2007)

Daylily Color/Pattern: Dots/Dusting



“Spacecoast Freaky Tiki” (Kinnebrew, 2006)

Daylily Color/Pattern: Contrasting Midribs



**Entrapment
(Heemskirk, 2006)**



**John Hawkins
(Stamile, 2009)**

Daylily Color/Pattern: Diamond Dusting



Daylily Color/Pattern: Diamond Dusting



“Golden Diamond Dust” (Peat, J., 2006)

Daylily Characteristics

TEXTURE – *Surface quality of blooms: smooth, velvety, creped, ribbed*

SUBSTANCE – *Substance of the tissue, from delicate to thick or leathery*

Daylily Texture - Velvety



“Study in Scarlet” (Kirchhoff, D., 1985)

Daylily Substance - Ribbed



“Barbara Mitchell” (Pierce C., 1984)

Daylily Texture - Leathery



“Leather Goddess” (Salter, 1988)

Daylily Texture – Delicate



“White Perfection” (Stamile, 1995)

Daylily Characteristics

Scape
Height &
Branching



Scape Height & Branching

Scapes:

- Low Scapes – 6” to 24”
- Medium Scapes – 24” to 36”
- Tall Scapes – Over 36”

Branching allows multiple blooms to occur on a single scape

Scape Height & Branching

Branching:

- Top-Branched – only near the top of the scape
- Low-branched – near the bottom foliage
- Multiple – general term for a number of side branches
- Three-Way (or any #) – indicating the number of branches per scape (e.g. can be four-way or five-way branching)

Daylily Branching



Daylily Characteristics

Foliage Types

- Dormant (Dor) – often don't do well in South and Central Florida!
- Semi-evergreen (SE or Semi-Ev)
- Evergreen (Ev) – best for zones 10 & warmer

Daylily Characteristics

Genetic Types

- Diploid (DIP) – two identical sets of eleven chromosomes, 22 total, in each cell
- Tetraploid (TET) – four sets of chromosomes, 44 total, in each cell

Daylily Characteristics



**DIP: “Early Bird Cardinal”
(Apps-Blew, 2004)**



**TET: “Chicago Fire”
(Marsh, 1973)**

Cannot see much of a difference here ... but keep watching!

Daylily Characteristics - TET



**“Ruby Pearl Sullivan”
(Petit, 2008)**



**“Insatiable Desire”
(Peat-J, 2012)**

Daylily Characteristics - TET



**“Art in Heaven”
(Lambertson, 2008)**



**“Bluegrass Candy”
(Stamile-Pierce, 2009)**

Daylily Characteristics - TET



**“Nicole’s After Glow”
(Harry, 2010)**



**“Carl Harmon”
(Reilly, 2009)**

Daylily Characteristics - TET



**“The Incredible
Earl Watts”
(Salter, 2012)**



**“Spacecoast Irish
Illumination”
(Hansen-D, 2013)**

Daylily Characteristics - TET



**“Surprised by Life”
(Hansen-D, 2013)**



**“Art Gallery
Sweet Tooth”
(Lambertson, 2012)**

Daylily Genetics - Diploids

Not to be outdone, daylily hybridizers began to do more with diploids ...

Daylily Characteristics - DIP



**“Perhelion”
(Elliott-S., 2010)**



**“Odd Man Out”
(Gregory-CJ & V., 2011)**

Daylily Characteristics - DIP



**“Pinwheel
Princess”
(Salter-EH, 2010)**



**“Grape Kool-Aid”
(Holley-S., 2008)**

Daylily Characteristics - DIP



**“Carolina Spirit”
(Shooter-E., 2008)**



**“Kaleidoscope
Lavender Pattern”
(Harry, 2013)**

Daylily Characteristics - DIP



**“Printmaker”
(Lambertson, 2013)**



**“Blue Eyes White
Dragon”
(Gossard, 2012)**

Daylily Characteristics - DIP



**“Kaleidoscope
Dreamsicle”
(Harry, 2013)**



**“Killer Bees”
(Elliot-S 2010)**

Daylily Characteristics

Tetraploids

- Flowers tend to be larger.
- Colors of the flower tend to be more intense.
- Scapes tend to be sturdier and stronger.
- Heavier substance in both flower and foliage.
- Vegetative vigor in leaf, stem, and flower tend to be greater.
- Breeding possibilities tend to be greater because of an increased number of chromosomes.

Daylily Characteristics

Diploids

- Good pink daylilies are still more prevalent in the diploid ranks.
- Spider and double daylilies are still more prevalent in the diploid ranks.
- Diploids are easier to cross than tetraploids.
- Many diploid daylilies have been converted to tetraploids, advancing the tetraploid lines.
- There are more diploids than tetraploids.

Daylily Blooming Times

- **Extra Early (EE)**
- **Early (E)**
- **Early Midseason (EM, Early Mid)**
- **Midseason (M, Mid)**
- **Late Midseason (LM, Late Mid)**
- **Late (L)**
- **Very Late (VL)**

WHEN TO PLANT DAYLILIES?

FALL

**WINTER
(South)**

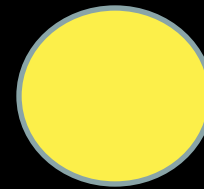
SPRING



WHERE TO PLANT DAYLILIES?

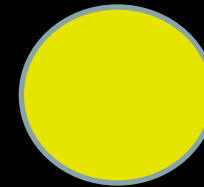
- Full Sun 👍

6-8 hours



- Part Sun 👍

4-6 hours



Purchasing Daylilies



Daylily Dry Root Fans



Daylily Clumps



Potted Daylilies



Planting Daylilies



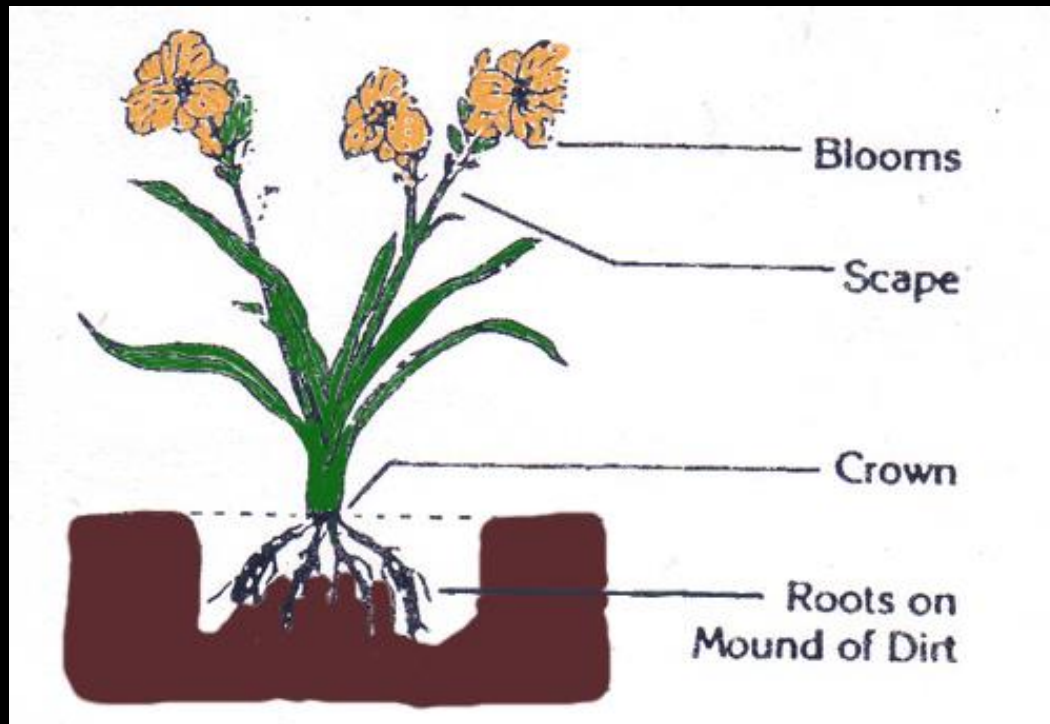
Planting Daylilies

Plant in Containers



Planting Daylilies

Or Plant into the Ground



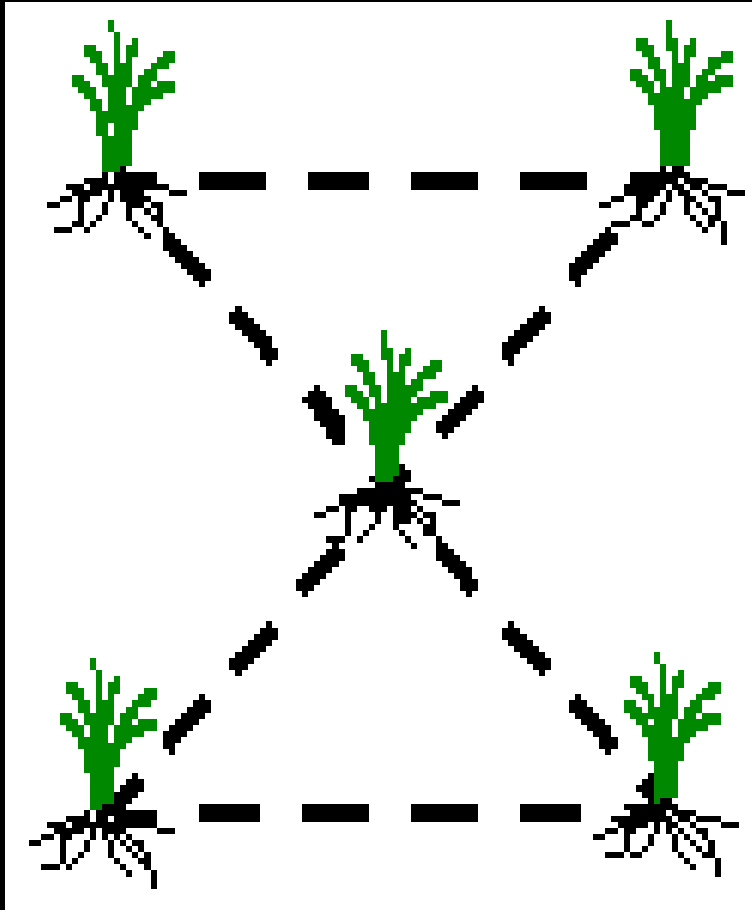
Planting Daylilies



**Use Good Rich Soil, But
Be Careful with Manure!**



Planting Daylilies



Space them about 12-16" apart



Plan Your Work & Work Your Plan!

Planting Daylilies

Labels Are Important!



Planting Daylilies



Keep them well watered



Planting Daylilies



Mulch is Your Friend!

Common Daylily Pests/Diseases

Leaf Streak



Daylily Rust



Common Daylily Pests/Diseases



Daylily infected with *Puccinia hemerocallidis*

DPI Photo by: Jeff Lotz

Common Daylily Pests/Diseases



Crown Rot

Common Daylily Pests/Diseases



**Stem and
Root Rot**

Common Daylily Pests/Diseases



Aphids

Leafminer



Common Daylily Pests/Diseases



Thrips



Common Daylily Pests/Diseases

OTHERS:

Cutworms

Deer

Grubs

Nematodes

Slugs/Snails

Spider Mites

Certainly Worth the Effort!

