



# Florida-Friendly Landscaping™ (FFL) – Just Do It!

## Master Gardener Conference 2013

Doris Heitzmann

Community Outreach Coordinator

Pinellas County Extension



# Topics

- **Why Florida-Friendly Landscaping™?**
- **How can communities become more Florida-Friendly**
- **Helpful tips how to get started**
- **Conclusion**
- **Open Discussion - Learning from your feedback and your experience**

# Why FFL?

## *The Ultimate Goal*

### *A Florida-Friendly Yard*

- **Attractive**
- **Functional**
- **Low maintenance**



- **Saves water & energy**
- **Reduces Pollutants**
- **Provides Habitat**
- **Recycles**

# Who is our Target Audience?

- Homeowners
- Homeowners Associations
- Condominium Associations
- Civic and Neighborhood Associations
- Mobile Home Parks



# What is the Objective of FFL Community Outreach?

Immediate Goal: Water conservation and reducing stormwater runoff

Long-term goal: Environmentally responsible Behavioral Change that has a positive impact on the environment



# What is considered success?

Adopting one or more principles of FFL:



Right plant, right place

Water efficiently

Fertilize appropriately

Mulch

Attract wildlife

Manage yard pests responsibly

Reduce stormwater runoff

Recycle

Protect the waterfront

# What are the potential results?

- Decreased use of fertilizer and pesticides that may also lead to cost reduction
- Reduction in pond maintenance
- Healthy and attractive ponds
- Changing landscaping contracts to FFL GI-BMP standard
- Creating wildlife habitat





# How can we get started?

Right Plant, Right Place

Consider low maintenance plants



# Low Maintenance? Homeowner or Community Landscape?

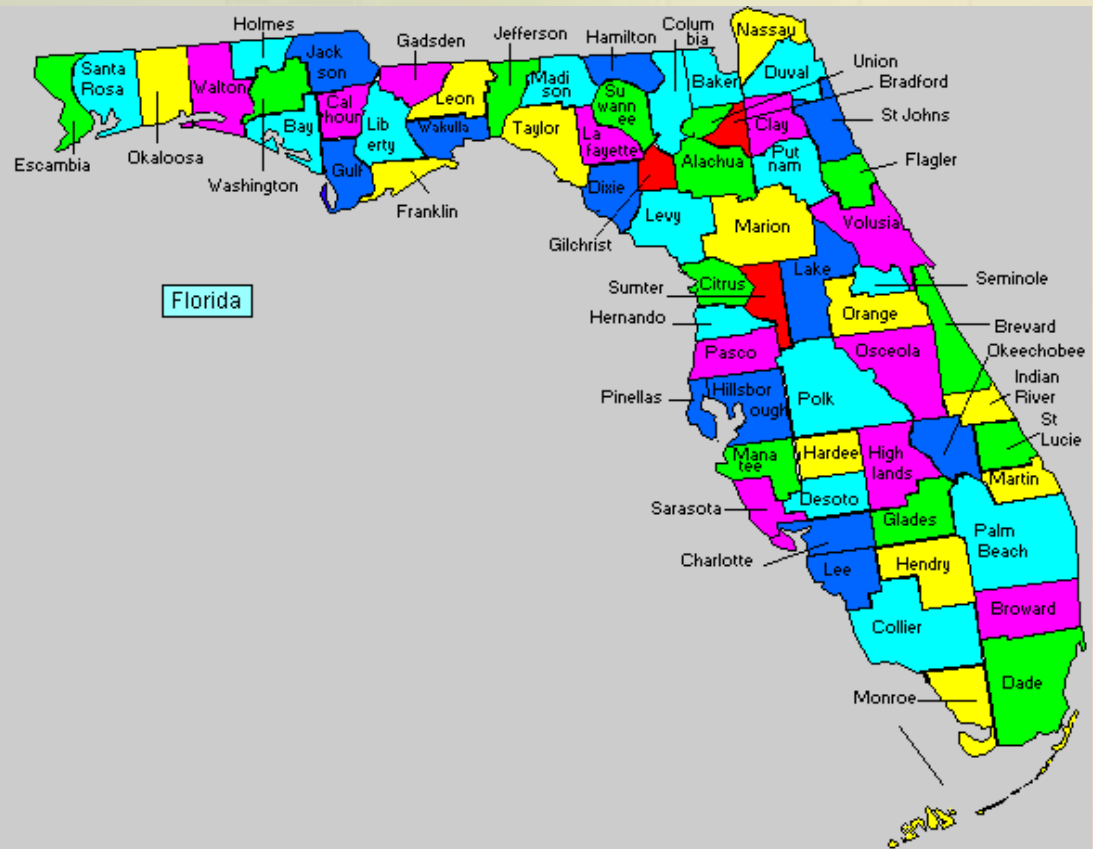


Firecracker Plant  
*Russelia equisetiformis*



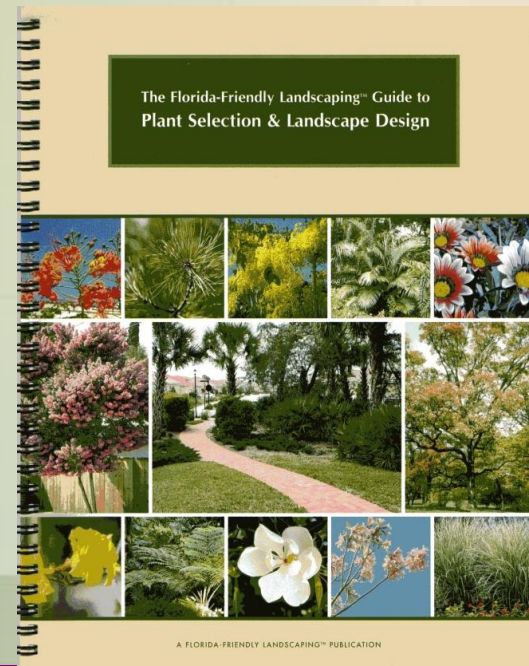


# Counties vary in locality, character and demographics ...



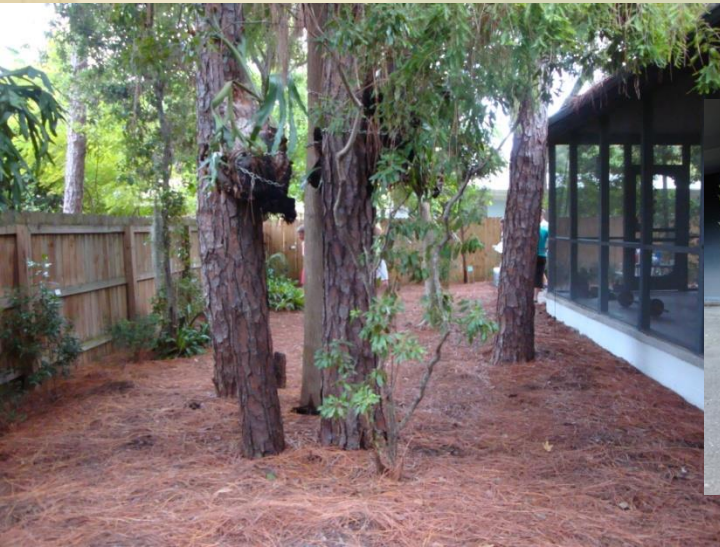
# Tools To Use

- Florida Yards & Neighborhoods Handbook/website ([www.floridayards.org](http://www.floridayards.org) > Plantdatabase)
- The Florida-Friendly Landscaping Guide to Plant Selection & Landscape Design  
<http://fyn.ifas.ufl.edu/homeowner/publications.htm>
- Twenty-Two Ideas for a Low-Care, Low-Cost Landscape  
<http://edis.ifas.ufl.edu/ep442>




# How about FFL Maintenance?

- **Mulch**
- **Recycling of grass clippings, leaves and pine needles and creating self mulching areas under trees**
- **Re-directing down-spouts from paved surfaces to landscape or incorporating rain barrels/cisterns**



# Fertilization

- Learn to identify nutritional deficiencies
- Only fertilize as needed



## Palm & Landscape Blend

### 8-2-12

GARDEN & HARDWARE DISTRIBUTORS, INC.  
 13195 49th Street North Clearwater FL  
 727-573-4517

A slow-release blend  
specially formulated for  
lasting results! Contains  
prilled Kieserite, Sulfur  
coated Sulfate of Potash and  
UFLEXX stabilized Nitrogen

**CAUTION**  
 Keep out of reach of children and animals. This and similar fertilizers are harmful if swallowed and may cause skin irritation. Avoid breathing of dust and contact with skin, eyes and clothing. Wash thoroughly and change to clean clothing after handling. Avoid getting on concrete walks, stucco, driveways, swimming pool areas, etc., as the composition of certain fertilizer elements can cause permanent stain. Store in cool, dry place.

**GUARANTEED ANALYSIS** F336-3068

Total Nitrogen (N) .....	8.00%
.00% Nitrate Nitrogen	
.00% Ammoniacal Nitrogen	
8.00% Urea Nitrogen	
.00% Water Insoluble Nitrogen	
Available Phosphorus (P <sub>2</sub> O <sub>5</sub> ) .....	2.00%
Soluble Potassium (K <sub>2</sub> O) .....	12.00%
Chlorine, not more than .....	2.00%

DERIVED FROM: Sulfur-coated Sulfate Potash, Triple Superphosphate, Urea

**SECONDARY PLANT FOODS**

Total Magnesium (Mg) .....	4.000%
Soluble Magnesium .....	4.000%
Total Iron (Fe) .....	2.000%
Soluble Iron (Fe) .....	1.612%
Chelated Iron (Fe) .....	0.150%
Total Manganese (Mn) .....	2.000%
Soluble Manganese (Mn) .....	1.850%
Boron (B) .....	0.150%
Soluble Copper (Cu) .....	0.200%
Soluble Zinc (Zn) .....	0.200%
Sulfur (S), combined .....	8.990%
Sulfur (S), free .....	1.850%

DERIVED FROM: Iron Sulfate, Iron EDTADTPA, Sodium Borate, Magnesium Sulfate, Manganese Sulfate, Zinc Sulfate, Copper Sulfate.

Manufactured by:

# IPM, Pruning





# Create Wildlife Habitat



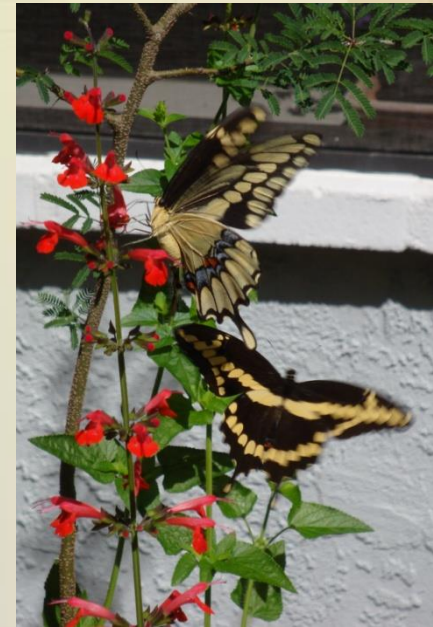
# Let's talk Irrigation ...

- Learn how to operate your irrigation time clock
- Is there an rain sensor?
- Spread the word about water restrictions



# Steps MGs can take:

- Set examples by practicing the nine principles of FFL in your own yard
- Maintain your landscape, that it looks appealing at all times
- Follow the FFL GI-BMPs from design, plant installation and accurate plant spacing to properly maintaining your yard



# Steps MGs can take:



## Be informed:

- If living in a Deed Restricted Community – what are the rules?
- Are there any FFL Landscaping Guidelines? (SB 2080)
- Keep abreast of current UF/IFAS research

# Get involved:

- Volunteer to improve community landscape
- Initiate an invitation of your FFL Coordinator
- Provide follow-up FFL information
- Join or form a landscape committee
- Run for a board of directors' position



# How do you identify opportunities?

- Attend board meetings to learn about landscaping related issues
- Explore opportunities to improve the landscape in common areas
- Identify common landscaping areas that need attention and provide solutions



# How to get started:

## Start with a small community project:

- Re-landscape and improve small landscapes
- Calibrate the irrigation system in common landscape areas
- Teach neighbors how to operate their irrigation time clock



# More ideas for projects:

- Removal of invasives
- Creating wildlife habitat
- Raise awareness about care and function of stormwater ponds
- Initiate pond project
- Teach educational workshops for residents





# Conclusion

- Understanding the dynamics of community associations is essential
- Get your FFL Coordinator involved
- Support FFL educational efforts
- Collaborate with and support fellow master gardeners
- Keep the line of communication open



# Conclusion

- Help and teach your neighbor to implement FFL Principles
- Set examples
- Start in your own neighborhood
- You may not see immediate results
- Be patient and persevere



# Conclusion

- Even if results don't occur quickly, the results can be very rewarding
- We are educators - always follow UF/IFAS researched based recommendations

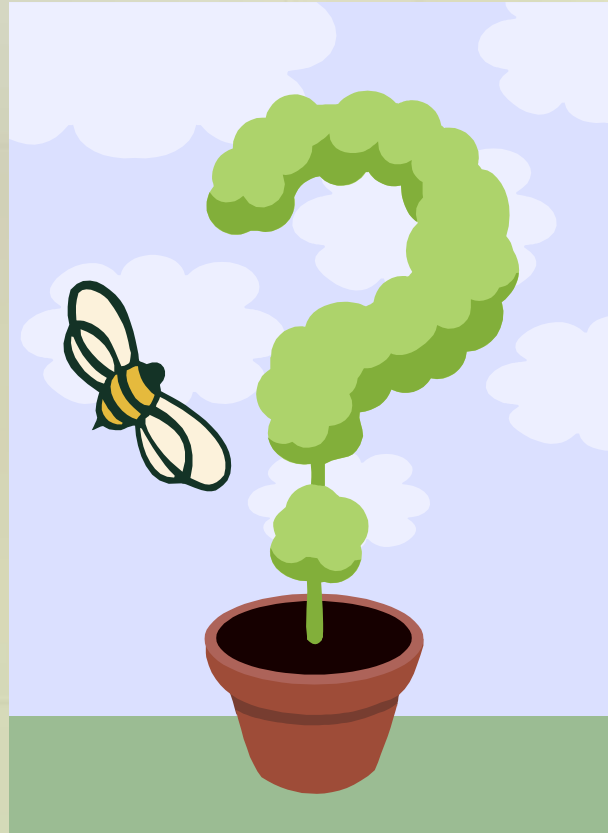


# Remember...



**You can make a difference and  
multiply the effort of your  
FFL Coordinators**

# Questions, Comments, Ideas?

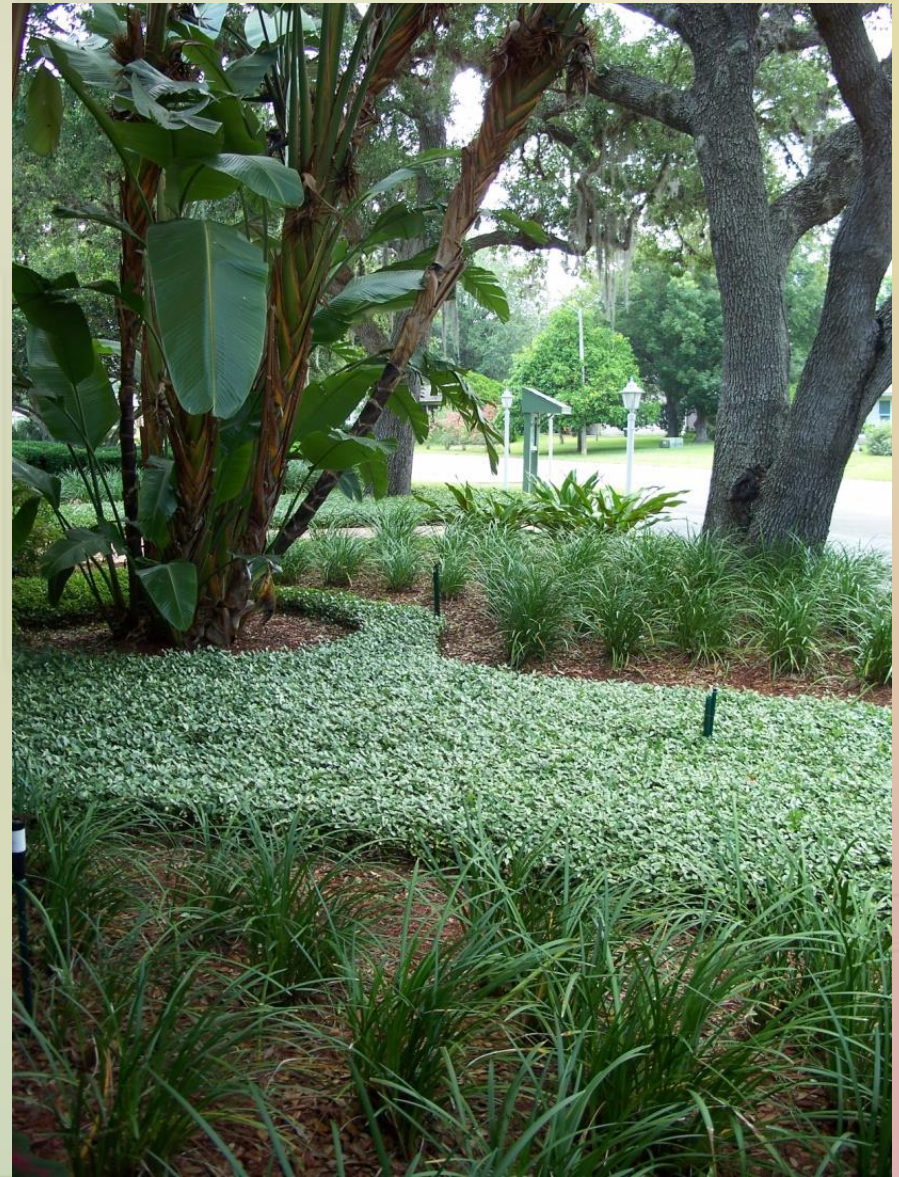


# Thank you for your attention!

**Doris Heitzmann**  
Community Outreach Coordinator  
Pinellas County Extension



# Community Association Projects



**Condo Association  
beautifies the landscape  
and conserves water at  
the same time**



**Before**

**2009 TBW  
WWA Winner**

**After**





# Converting to FFL saved HOA Water and \$\$



**Before**



**After**

**Community  
removes  
Invasives and  
controls  
Erosion**



**2011 TBW  
WaterWise  
Award Winner**



**Before**



**After**



# FFL Landscape - HOA-Entrance



# Adopting Right Plant, Right Place Principle



# A Community Project



**Before**

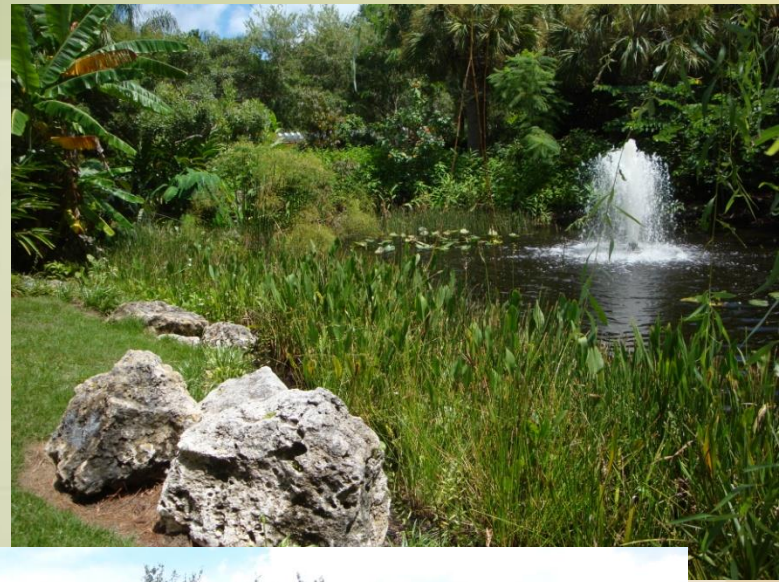
**Erosion control and beautification**



**After**



# Pond Projects



# From high to low Maintenance



**Before**



**After**



# Eagles Landing



**Before**

**Eagles Landing  
receives the 2012  
Community of  
Excellence Award  
& TBW Water Wise  
Award**



**After**

# Thank you for your attention!

**Doris Heitzmann**  
**Community Outreach Coordinator**  
**Pinellas County Extension**

