

 **KIND
DESIGNS**



GOODBYE, MIAMI

Rolling Stone

By century's end, rising sea levels will turn the nation's subtropical urban fantasyland into an American Atlantis. But long before the city is completely underwater, chaos will begin

BY JEFF GOODELL





First US Seawall, Galveston TX 1904



**SEAWALLS WILL DESTROY 50,000 MILES OF
MARINE HABITATS BY 2040**



3D-PRINTED LIVING SEAWALLS



3DP Living Seawalls



World's FIRST 3D-Printed Seawall!



2024

MIAMI BEACH

PINE TREE DR



2025

MIAMI BEACH

STAR ISLAND



2025

MIAMI BEACH

PALM ISLAND



2025

BAL HARBOUR

BAY HARBOUR ISLANDS

2025

FT LAUDERDALE

BRYAN PLACE





3 Months



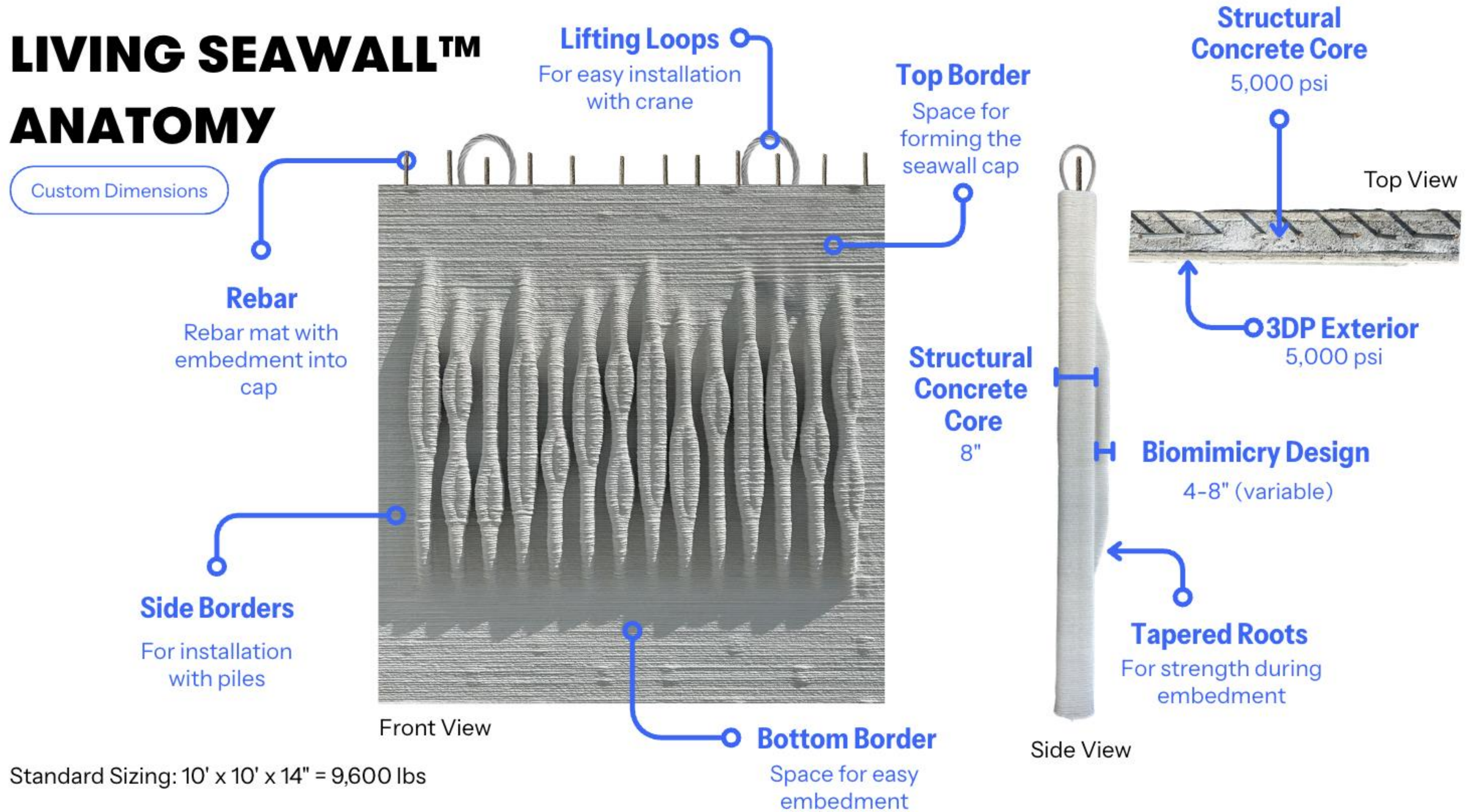
6 Months



9 Months

LIVING SEAWALL™

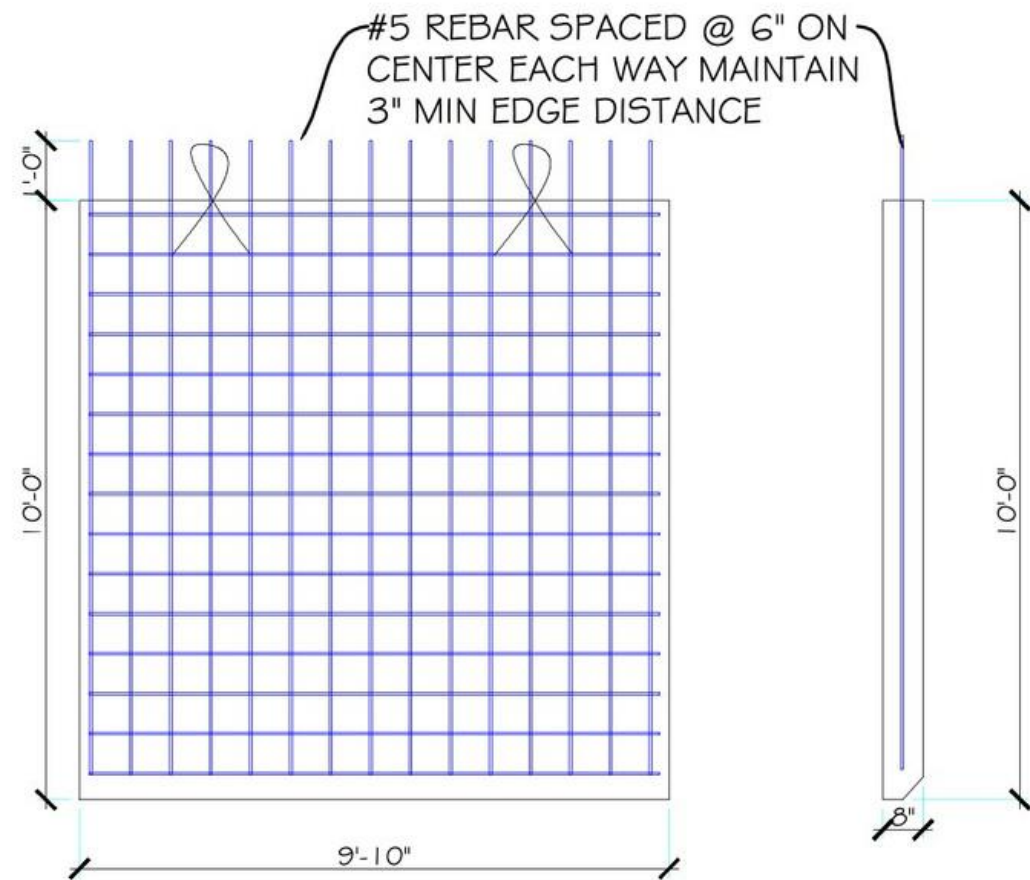
ANATOMY



Standard Sizing: 10' x 10' x 14" = 9,600 lbs

Easy to Permit

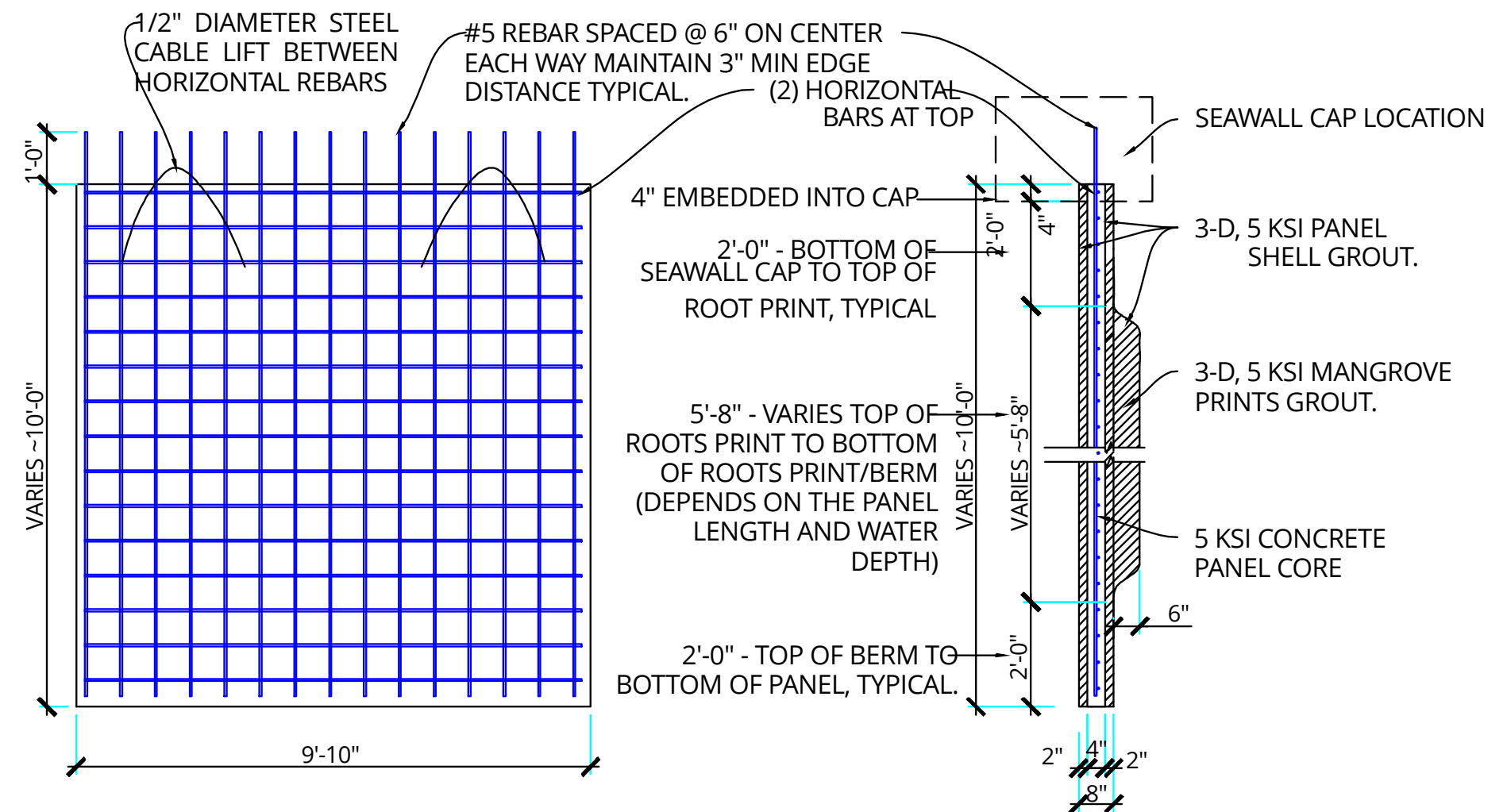
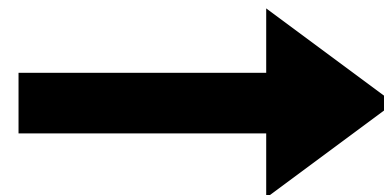
IDENTICAL specifications, no modification needed



ORIGINAL SLAB

**YOU CAN PLUG PANELS
INTO PROJECTS
ALREADY IN PERMITTING**

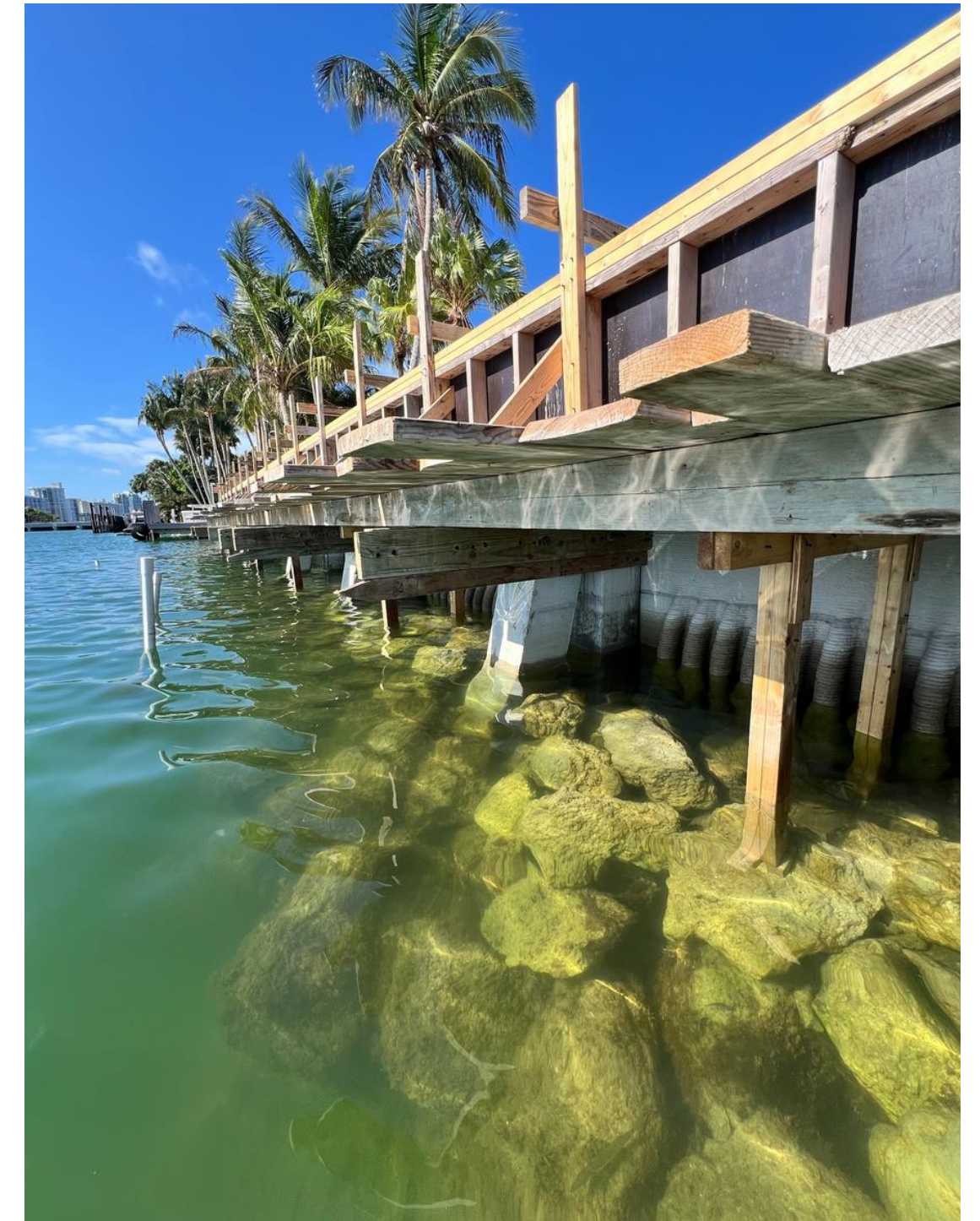
Living Seawalls are structurally identical to original specifications (5,000 PSI, rebar, dimensions)



3-D SEAWALL SLAB DETAILS

Easy to Install

IDENTICAL Installation process to precast concrete seawall panels



LIVING SEAWALL TILES



STANDALONE TILES



FACADE TILES



PILE JACKETS

Easy Installation

Tiles are attached with studs to steel seawalls. Kind will provide a magnetic jig for alignment. Fasteners will be covered with color match epoxy.

Custom Dimensions

Panels are designed to project specifications, with a maximum height of 20 ft.

Material

5,000 PSI Mortar

Biomimicry Design

Panels feature a 4-8" mangrove root-inspired design with deep caves that support diverse marine life.

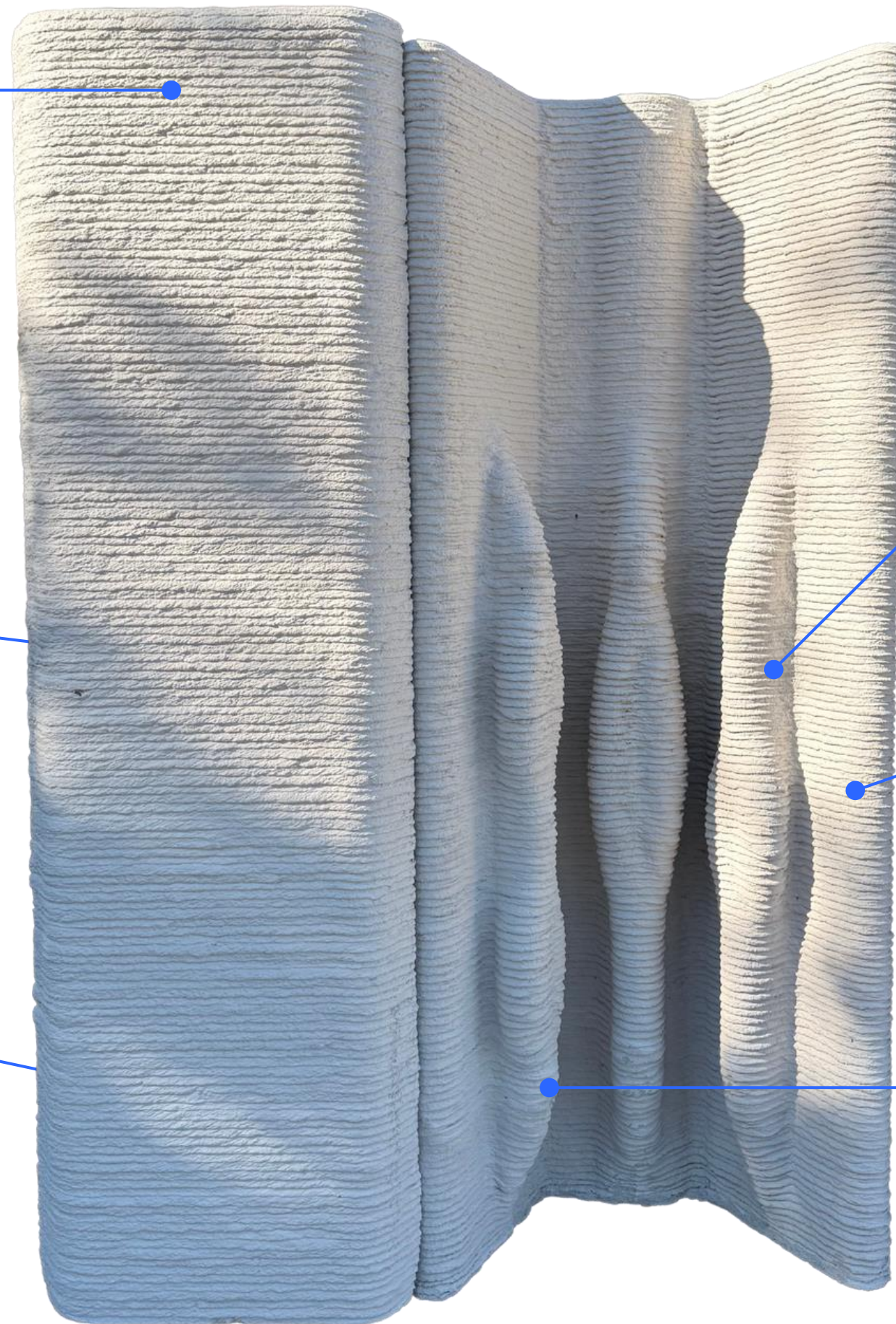
Rugosity

Our half-inch 3D-printed layers create unique surface textures, that provide twice the surface area of a flat seawall.

Wave Dissipation

Panels reduce wave energy by 45% on avg. minimizing scour, erosion, and overtopping.

Standard Sizing: 2' W x 6 H' x 6" D = 800 lbs





GOVERNMENT



2025

LONGBOAT KEY

BAYFRONT PARK



1 Month

2025

LONGBOAT KEY

BAYFRONT PARK



LIVING SHORELINES

KD OYSTER REEF VS. TRADITIONAL STRUCTURES

	KD Oyster Reef	DERM Reef Module
Dimensions	4' w x 2' h x 2' d (customizable & stackable up to 4 layers)	6' w x 8' d x 7'6" h
Volume	0.6 CY	8.8 CY
Weight	850 lbs	35,640 lbs
Surface Area	151 SF	245 SF
Surface Area/lb	0.178 SF/lb *25X Lighter (for same footprint)	0.0069 SF/lb
Surface Area/CY	252 SF/CY *23X More Efficient	28 SF/CY





COMMERCIAL

BILLION
OYSTER
PROJECT

2025

NYC

GOVERNOR'S ISLAND REEF



Municipal Collaboration

Miami-Dade

- Effective July 2025 Living Seawalls are **exempt from mitigation** (only requiring 1 “bead” per FDEP)
- Living Seawall Tiles can be permitted under EAA (10 day process v 2 yrs)
- **90 day permit** for all
- **No permit modification** required for Living Seawalls!



Municipal Collaboration (part 2)

Broward

- Mitigation exemption

North Bay Village

- 40% Permit Fee Discount

Coral Gables

- 20% Permit Fee Discount

Fort Lauderdale

- 5 Year Continuing Contract
- Pending: 50% Permit Fee Discount

Miami Beach

- Pending: 50% Permit Fee Discount

Miami

- Pending: 50% Permit Fee Discount



**REPLACE EVERY TOXIC
SEAWALL WITH AN
ARTIFICIAL REEF**



MIAMI BEACH

**PROTECT EVERY
COASTAL CITY IN
FLORIDA**



**SET AN EXAMPLE
FOR THE REST OF
THE WORLD**

THANK YOU!



 **KIND
DESIGNS**

WWW.KINDDESIGNS.COM
HELLO@KINDDESIGNS.COM
(305) 851-1133