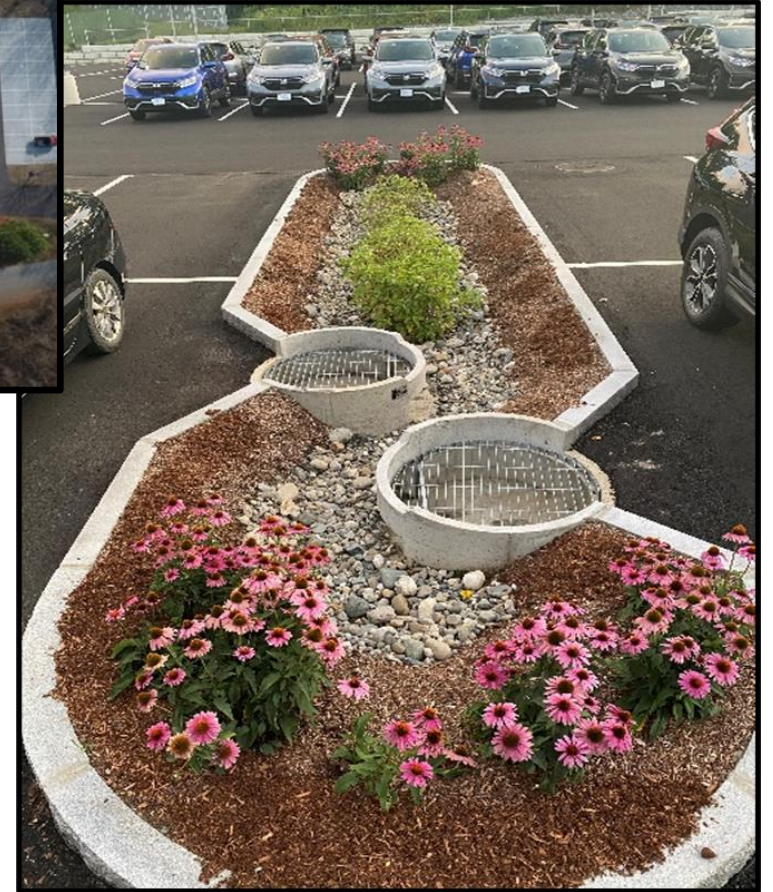


# STORMWATER IS KEY

RESILIENCE = FLOOD REDUCTION + NUTRIENT REDUCTION

- Requires outside of the box thinking for how to implement new BMPs in different places to meet goals
  - Retrofits
  - New projects
  - Different locations for storage



# FLORIDA'S NEW STORMWATER RULE

SB 7040 – 6/28/2024

- Treatment standards 12/28/25



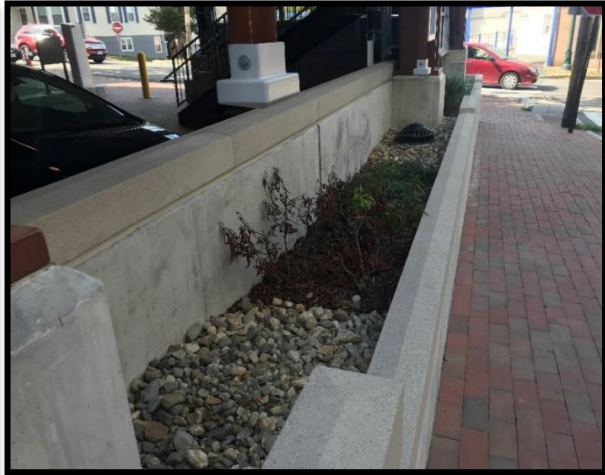
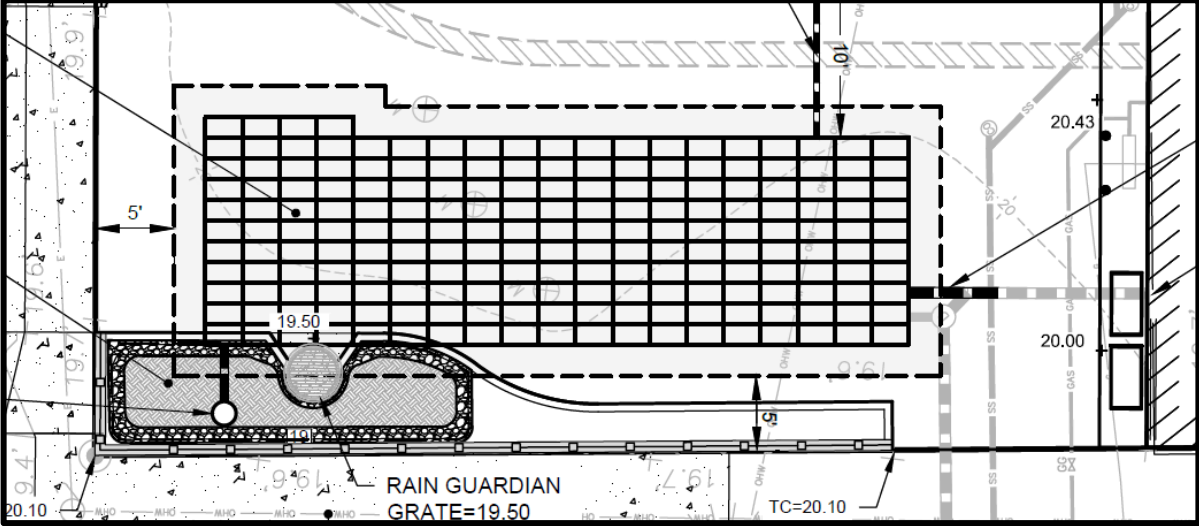
## TREATMENT STANDARDS SUMMARY OF SECTION 8.3, AH VOLUME I

Project Scenario	TP	TN	Additional Criteria
All sites	80	55	Or post ≤ pre
OFW	90	80	Or post ≤ pre
Impaired water	80	80	And post ≤ pre plus net improvement
Impaired + OFW	95	95	And post ≤ pre plus net improvement
Redevelopment	80	45	N/A
Redevelopment + OFW	90	60	N/A
Redevelopment + impaired	80	45	And net improvement for the pollutant of concern



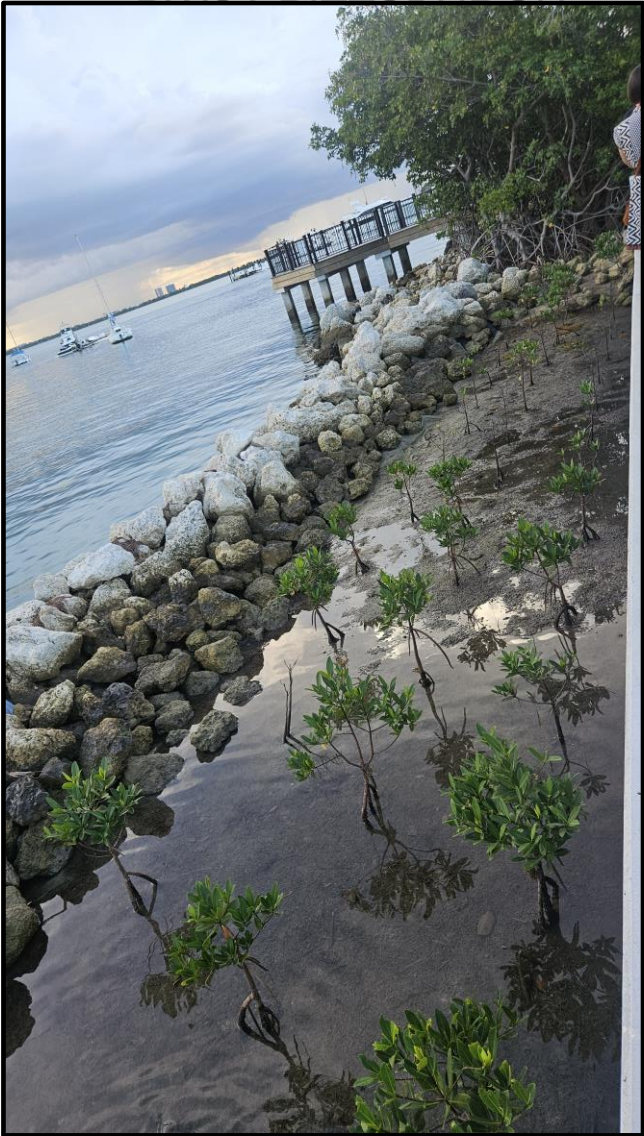
# TIGHT URBAN SITES

FOCALPOINT BIOFILTER





# PARK RETROFIT PROJECTS

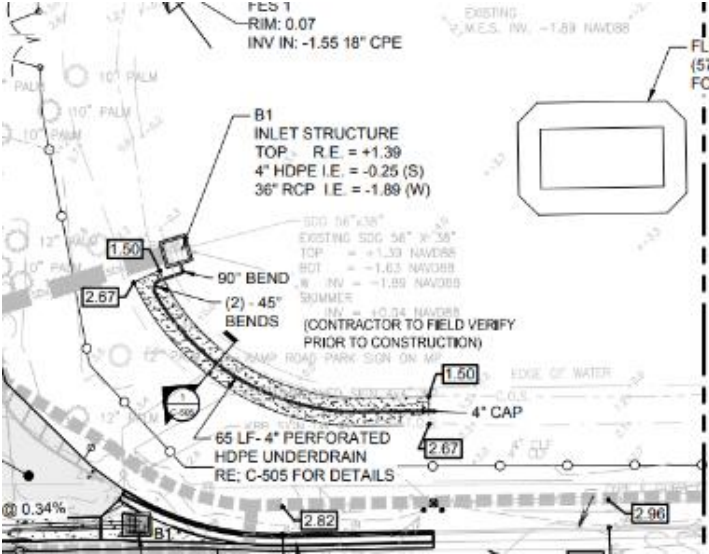




# RAMP ROAD STORMWATER IMPROVEMENTS



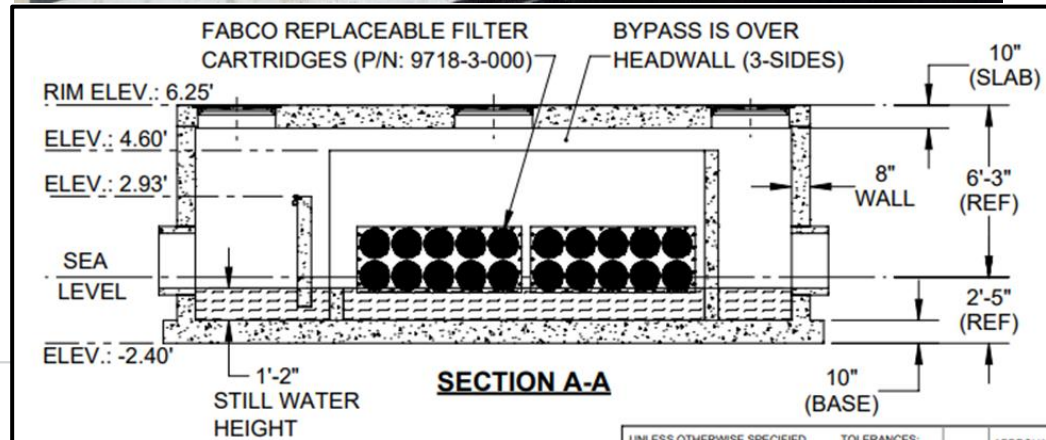
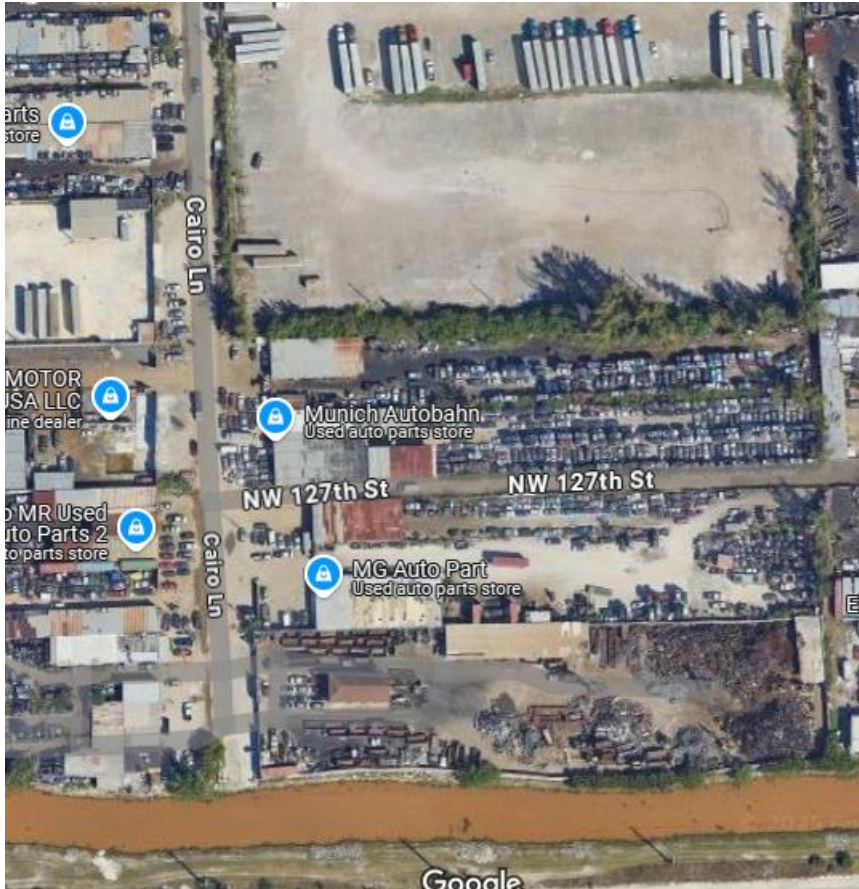
**87% TN**  
**98% TP**





# CAIRO LANE- OPA LOCKA

## Roadway Reconstruction and Drainage System



### Issues

- Sediment
- Heavy Metals
- Hydrocarbons

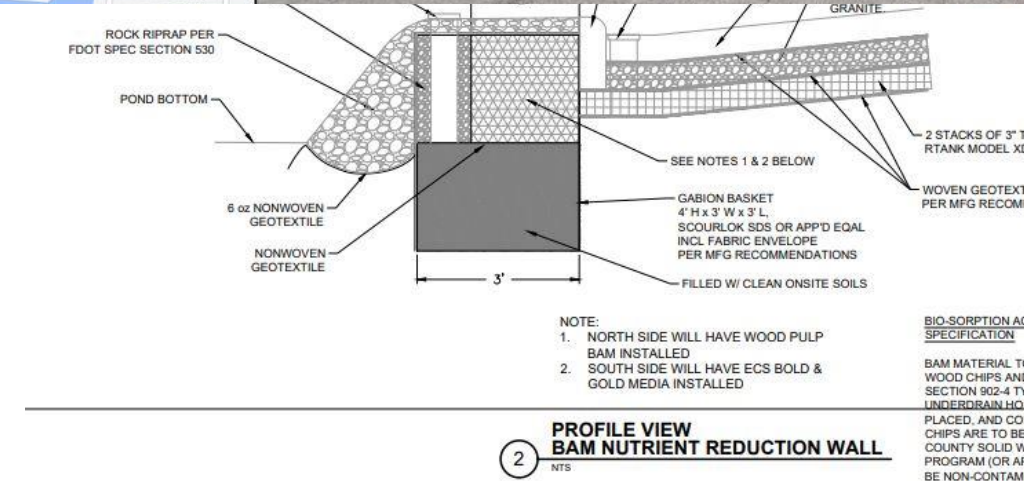
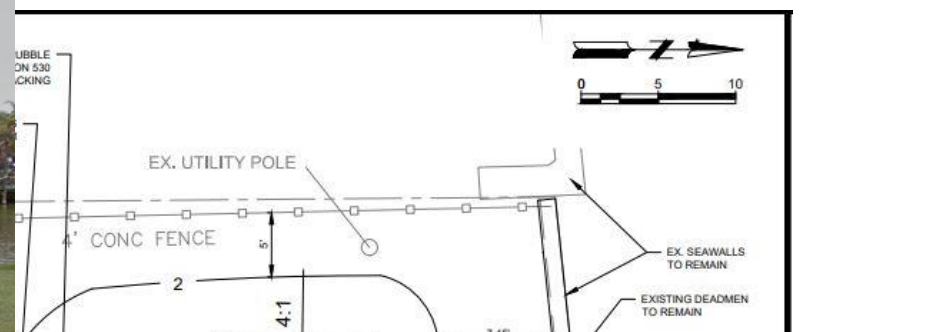




LE

84% TN

76% TP





# SHORELINE PROTECTION- PALM BAY

Reef Arches



45 Days



100 Days





# CRITICAL INFRASTRUCTURE PROTECTION- CAPE CANAVERAL

## Reef Arches





# CRITICAL INFRASTRUCTURE PROTECTION- CAPE CANAVERAL

## Reef Arches





# CRITICAL INFRASTRUCTURE PROTECTION- CAPE CANAVERAL

## Reef Arches

