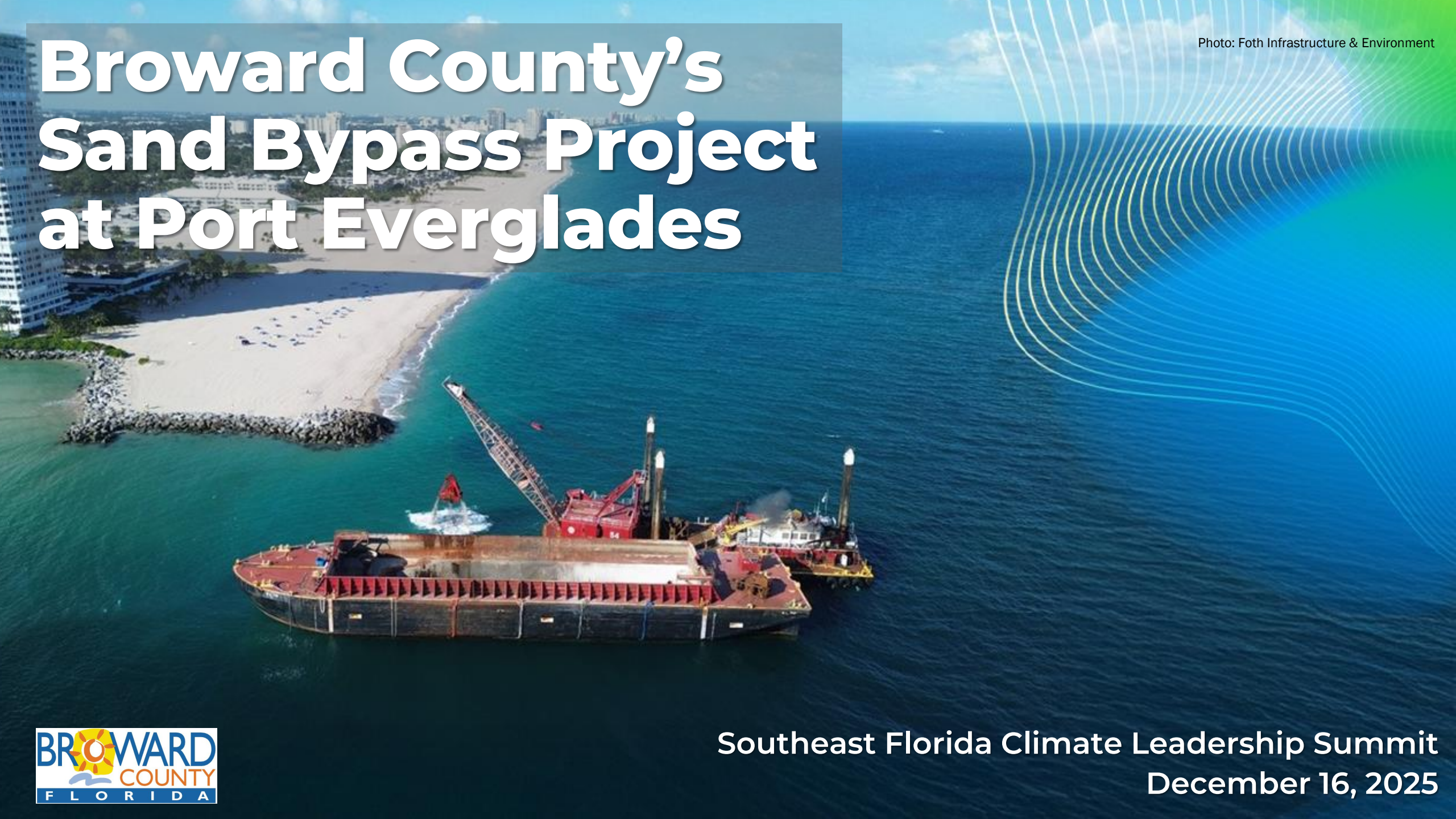


# Broward County's Sand Bypass Project at Port Everglades





# Broward County's Beach Management Program

---

- Protection of upland infrastructure (\$23.8B)
- Habitat for threatened and endangered species
- Recreation and tourism
- Active management of beaches in Segments II and III



Photo: M. Hartman

# Area of Interest: Port Everglades Inlet

---



Historic 1928 image from the Florida State Archives – Florida Memory Project



Port Everglades Inlet in 2025. Photo K. Kilfoyle



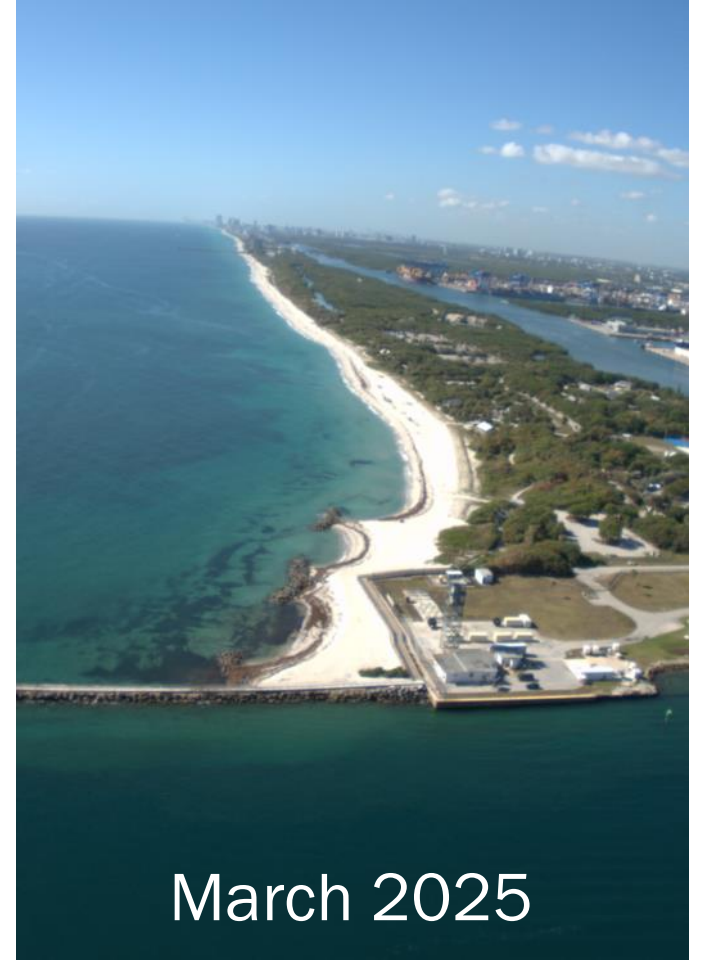
# Critical Erosion



March 2020



March 2023



March 2025

# Sand Bypass: Project Background

---



Photo: Foth Infrastructure & Environment

- 30-years of planning, design, and permitting
- Rigorous modeling and coordination with State (FDEP) and Federal (USACE) agencies; public input
- Deemed the environmentally-preferred strategy for beach management
- Will provide 50% of the sand needs for southern beaches



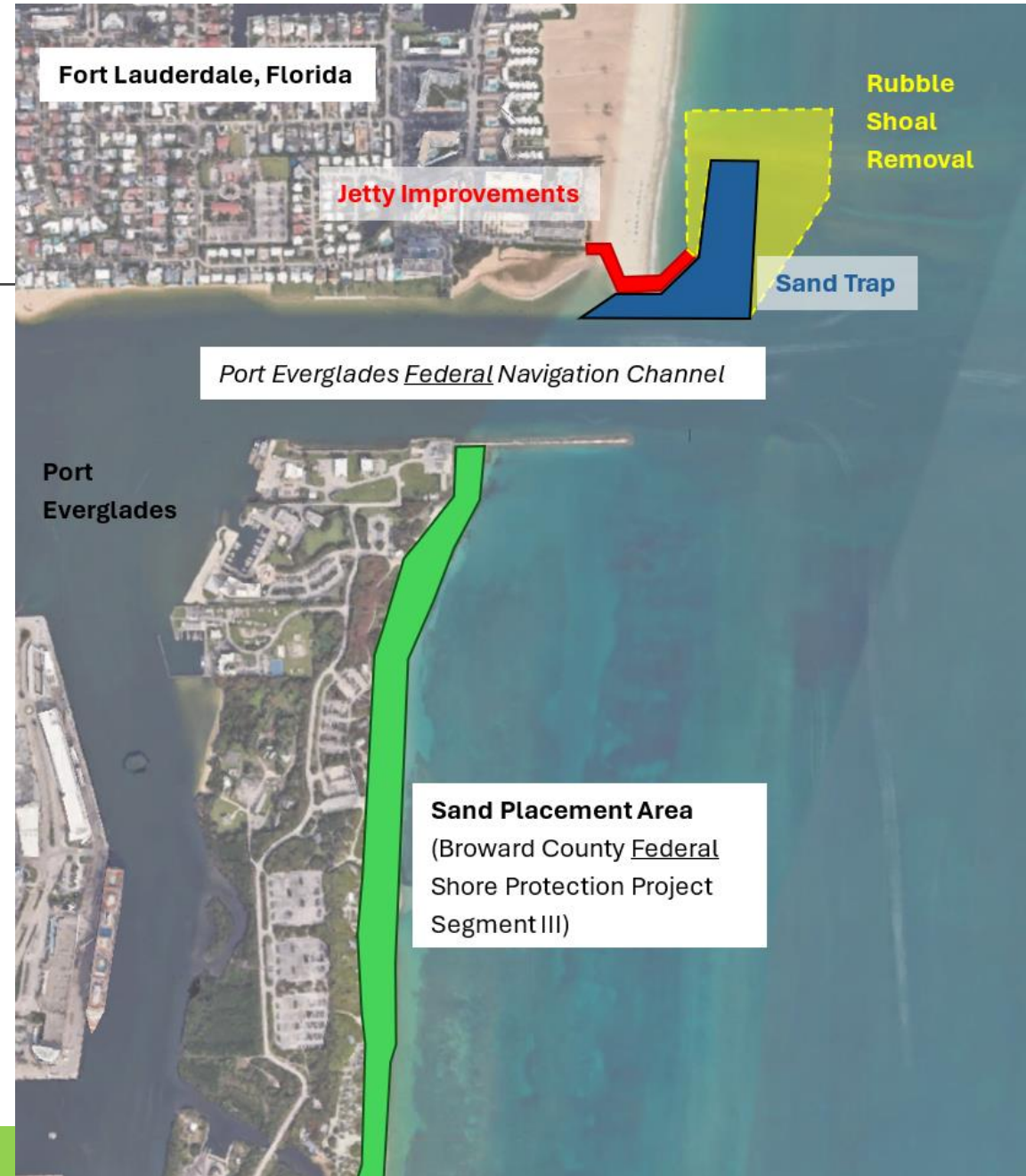
# Sand Bypass: Project Overview

Pre-Construction Activities

Four Construction Phases:

- Dredging (Sand Trap and Rubble Shoal Removal)
- North Jetty Improvements
- Reef Mitigation
- Rubble Clearing (future)

Post-Construction Monitoring and Future Maintenance Events



# Work Has Begun!





# Environmental Protections and Monitoring

---

- Coral and queen conch relocation from sand trap area
- Seagrass survey
- Turbidity / water quality monitoring (ongoing)
- Sea turtle, manatee observers (ongoing)
- Coral, sediment, and conch surveys in mixing zone (ongoing)



Photo: Broward County Marine Resources



# Recognition & Importance

---

- Municipal and stakeholder support
- Adaptation Action Area
  - *Broward County Board of County Commissioners (2015)*
- Recognized in Broward County Land Use Plan



Photo: S.Roche

# Sand Bypass Project Benefits

---

- Sustainable beach management
- Limited offshore & upland sand sources
- Increases resilience of southern beaches
- Modeled with 2' sea level rise projection
- Augments existing beach programs



Photo: USACE



# Questions?

**Stephanie Roche**  
Beach Program Manager  
Public Works and Environmental Services  
Department

[sroche@broward.org](mailto:sroche@broward.org)  
954-519-1231



Photo: S. Ladd