

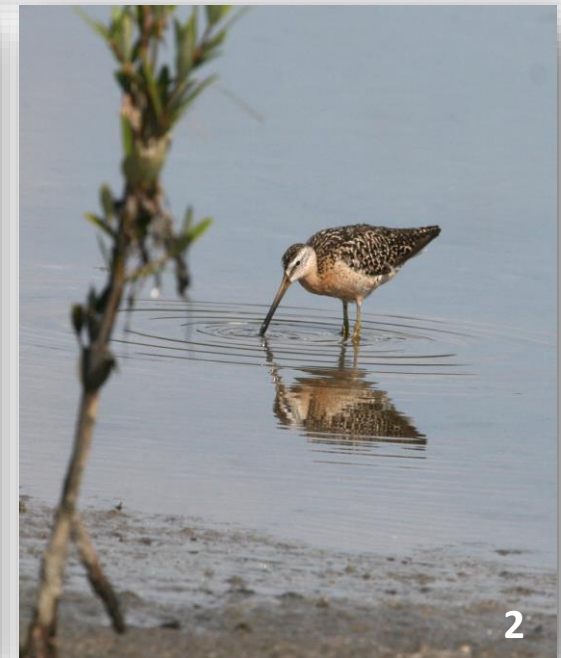
Restoring Resiliency in Lake Worth Lagoon

Building Nature-Based Solutions in an Urban Estuary

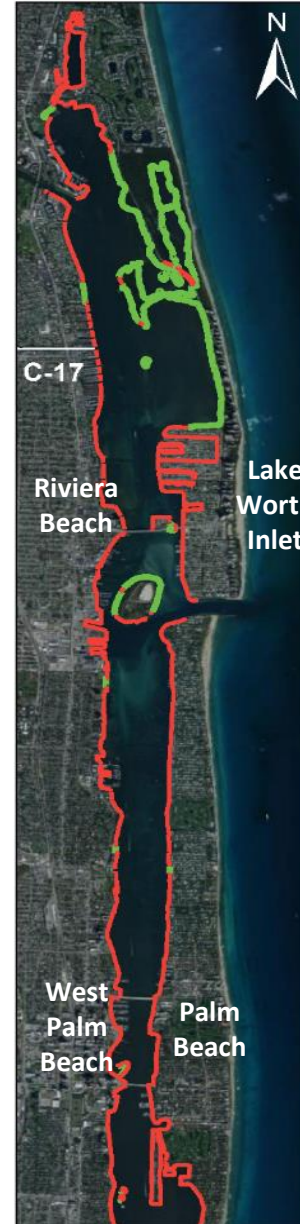


Jennifer Jordan Báez
Environmental Resources Management
Palm Beach County





Lake Worth Lagoon Conditions



2020 Lake Worth Lagoon Shoreline Characterization

Shoreline

- Armored 70%
- Natural 30%

0 0.5 1 2 3 Miles



Palm Beach County's Portfolio



Shoreline Planters



Filling / Intertidal Islands



Exotic Removal / Scrape Down



Artificial Reefs



Breakwaters & Oyster Reefs

Since 1990:

- 60 projects resulting in over 330 acres of created / restored habitat.





Nature-Based Hybrid Design



South Cove Planter - 2012



Par 3 Golf Course - 2001



Osprey Park



Currie Park

-
- Site Conditions:
 - New seawall
 - Riprap
 - Natural Beach







Design Considerations:

- Riparian Rights
- Existing Views
- Utilities
- Resources
- Water Depths
- Maintenance
- Cost







Project Accomplishments:

- Balanced design enhancing 50% of existing seawall with living shoreline
 - Planters varied between 50 and 100 feet in length
- Created 0.26 acre of mangrove habitat





Osprey Park

Currie Park





Osprey Park

Currie Park





Osprey Park

Currie Park





Osprey Park

Osprey Park



Restoring Resiliency in Lake Worth Lagoon

Building Nature-Based Solutions in an Urban Estuary



Jennifer Jordan Báez

Environmental Resources Management

Palm Beach County

jbaez1@pbc.gov

561-233-2424

