



Extreme Heat

Miami-Dade County is Ready

To protect the health and lives of our residents, **Miami-Dade County activates a Heat Season protocol during the period of chronic high heat and humidity from May 1- October 31, and works year-round to create cooler neighborhoods.**

The benefits to public health and our economy have been tangible: in recent years, Miami-Dade had the lowest rates of heat-related ER visits of any county in FL.

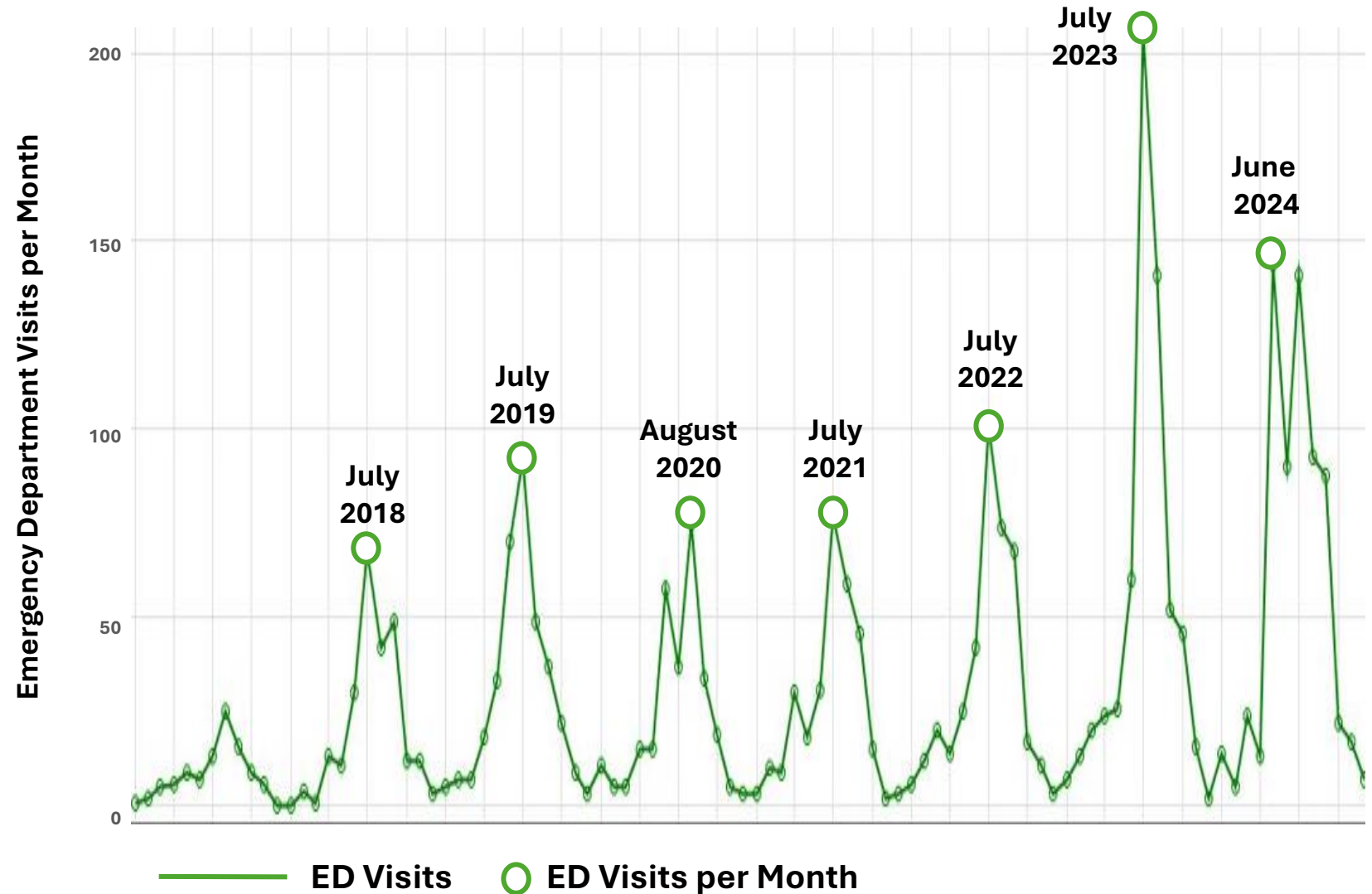


Heat is the Number One Weather-Related Killer

It's estimated that the average number of excess deaths during times of extreme heat are 600 annually in Miami-Dade County alone. Heat related deaths begin to rise at a heat index of 86°F and rise steadily with each additional degree.

In 2024, we experienced an unprecedented 60 days with a heat index at or over 105°F. The annual economic impact of heat on labor productivity in South Florida alone is \$10 Billion.

Heat-Related Illness Emergency Department Visits Miami-Dade County 2017-2024



2025 Heat Season Initiatives

INFORM

Heat Season Campaign

The County reaches about **3 million people each year** through multiple channels, targeting heat safety messaging for the most vulnerable people, and connecting residents with low and no cost ways to make cooling homes more affordable. Multilingual brochures and posters are also available for download.

Employer/Employee Resources & Trainings

The County provides annual free webinars and online resources for employers on best practices for heat safety at work.

PREPARE

Heat Safety & Extreme Weather Preparation

The County equipped more than **450 providers** of healthcare, summer camps, homeless outreach and community leadership with knowledge and supplies to identify and address heat-related illnesses.

Heat & Hydration Grant for Small Businesses

In partnership with The Miami Foundation, the County offered a **mini-grant program for businesses** to purchase hydration, shade and other cooling equipment and supplies.

ACTIVATE

National Weather Service Collaboration

The County's partnership with the National Weather Service (NWS), resulted in piloting a lowered heat advisory and warning threshold in Miami-Dade County, to **more effectively warn residents of heat risks**.

Cooling Site Network

The County now has **64 designated cooling sites** at libraries, county and city parks and Government Center, which are open to the public. See list and map at miamidade.gov/heat

Working Year-Round to Keep Miami-Dade Cool



Miami-Dade County is proactively addressing extreme heat through a year-round strategy to **weatherize homes, enhance air conditioning capacity, and expand the urban tree canopy.**

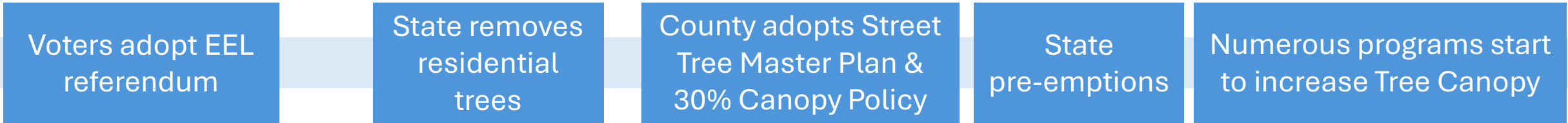
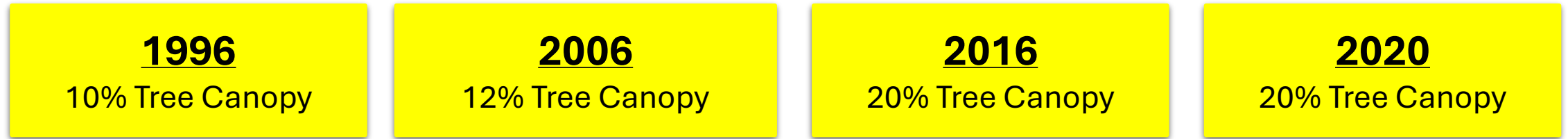
Help People Stay Cool at Home

- Utility assistance to approximately **30,000 households a year;**
- **Tripled the weatherization and home rehabilitation services** to low income, elderly and disabled homeowners; and
- **Installed 1,700 efficient AC units** in undercooled public housing.

Cool Our Neighborhoods

- Doubled annual trees planted to **16,000 a year;**
- Given away **10,000+ trees annually;**
- Secured and begun implementation of a \$10 million, 5-year USDA grant for tree planting in low canopy areas;
- **Released the County's first Urban Forestry Plan;**
- Launched a **TREE Leader program** to empower low-canopy communities; and
- Built partnerships with school and faith-based organizations.

How Has Our Urban Tree Canopy Changed?



Miami-Dade County is home to 4 million trees providing huge benefits each year:

1.8 billion gallons of stormwater absorbed

Saving our streets and homes from flooding, and improving water quality.

72 tons of pollution removed from the air

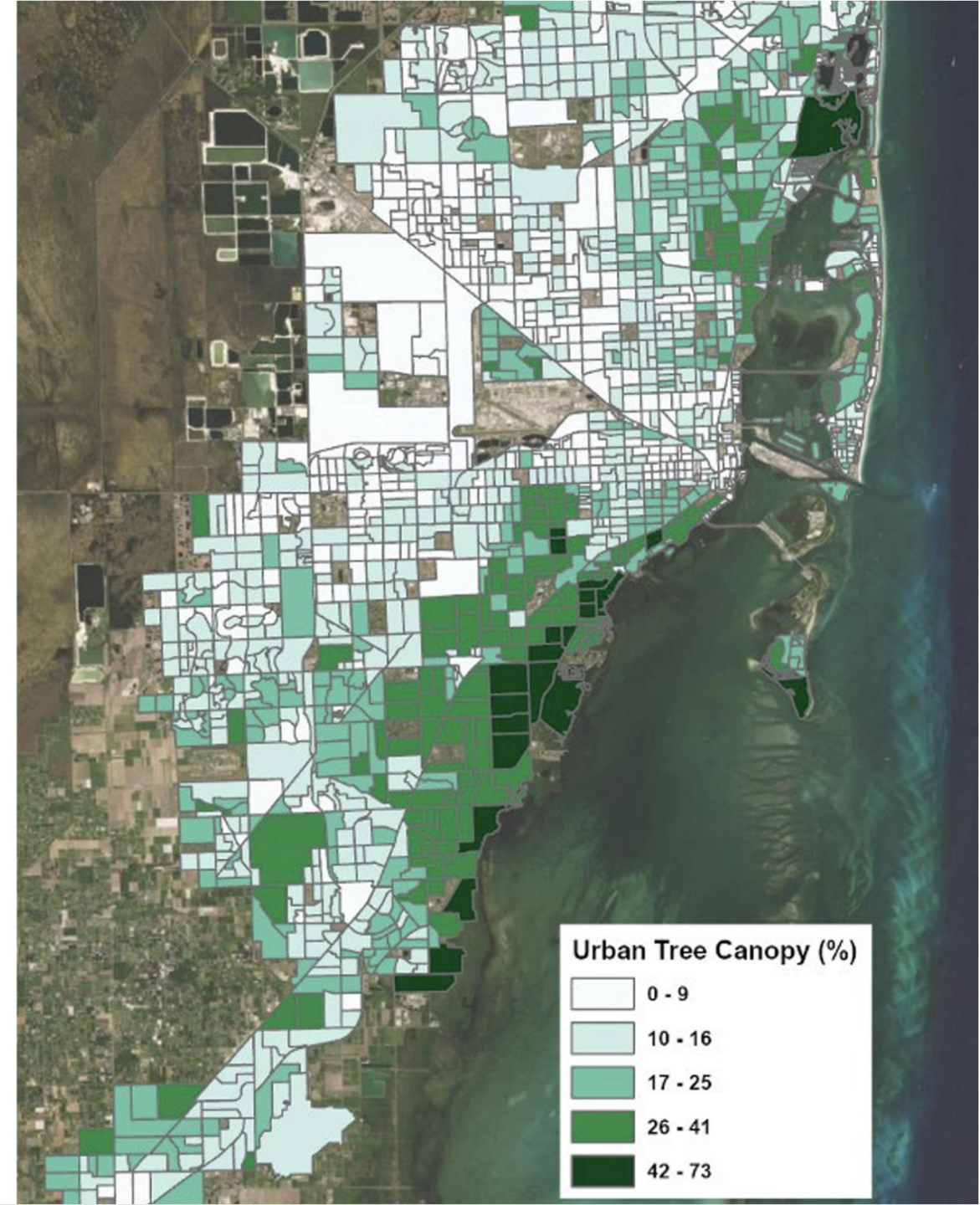
About equal to the amount generated by 67,000 gas-powered cars.

\$69.6 million in ecosystem service value

Including the air, water and carbon benefits provided by our trees.

20 to 45 degree reduction in temperatures

On the surface of shaded walls and roofs in extreme heat.



Let's Grow

Miami-Dade County has existing programs and policies that have made big strides in protecting and growing tree canopy.

The Urban Forestry Plan provides strategies for strengthening these programs and expanding their reach.

PLANT

Tree Trust Fund

Established to acquire, protect, and maintain Natural Forest Communities (NFC) and plant trees in public-owned property.

Million Trees Miami

Secured an average of \$481k per year (\$13.8 million) in sponsorships, leveraging public dollars in support of planting trees on County-owned properties and hosting tree giveaways.

Adopt-a-Tree

Provides Miami-Dade County single-family and duplex homeowners with up to two free trees every year. Since the program's inception in 2001, 246k trees have been distributed at nation-leading survival rates.

GREEN Grants

Leverage the County's Tree Trust Fund by encouraging investments on public land. Matching grants are provided to municipalities, agencies, non-profits, foundations, and community groups.

PRESERVE

Environmentally Endangered Lands

Voters approved a property tax collected between 1990 and 1992 to fund the EEL. Currently more than 28,000 acres.

Parks & Open Spaces

The Parks, Recreation and Open Spaces Department manages 280 parks covering more than 13,500 acres, and maintains street trees on approximately 265 miles of medians.

PROTECT

Landscape Code & Manual

Miami-Dade County's landscape standards aim to enhance and maintain quality through Florida-Friendly principles.

Tree Ordinance

A permit is required for the removal or relocation of any tree not specifically exempt.

Urban Development Boundary

Established in the Comp Dev Master Plan, this boundary limits construction to encourage growth near existing infrastructure.



URBAN FORESTRY GOALS

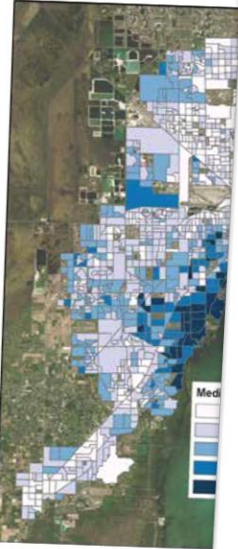
- This plan sets forth sound, community-
- 1. Prioritize the lo**
 - Deepen relation neighborhoods
 - Prioritize tree a correlation bet
 - Identify the dri an uneven dist
 - 2. Increase the q**
 - Implement pro
 - Determine vulr conflicts with
 - Develop inform rise, increasin
 - 3. Proactively p**
 - Preserve exist planted trees
 - updating p
 - selecting t
 - Investing i
 - increasing
 - Foster a "gro
 - 4. Engage comm**
 - Promote pro value of pro
 - Engage resic and planting
 - 5. Establish a d**
 - Seek policy prioritize im
 - Strengthen Countywide implement
 - Create ince hold gover non-compl
 - Seek voter-

7

URBAN FORESTRY PLAN

However, since the 2016 as has remained essentially at The 2021 Urban Tree Can previous ones, including:

- The canopy is inequi block groups with high having much lower ca



Source: Miami-Dade County Urban Tree Ca

- Areas with higher tr and overall hospital
- A large portion of the on aerial photograp and impervious sur planning considerat such as utilities, go trees.
- Increases in surface tree canopy was re to impervious surfa

3

URBAN FORESTRY PLAN



LETTER FROM MAYOR DANIELLA LEVINE CAVA

Our trees and urban forest system floods, and storing carbon, all esse live, work, and thrive.

My administration is dedicated to years, the Board of County Comm from approximately 8,000 trees in funds from the U.S. Department o partnerships with our educational properties. In all these efforts and planting in low canopy and high p

While the County has had a long and urban forests, we continue to The 2021 urban tree canopy asse ground in others and overall rem

Included with this letter is our resilient tree system without you. grow a healthy tree canopy, espe

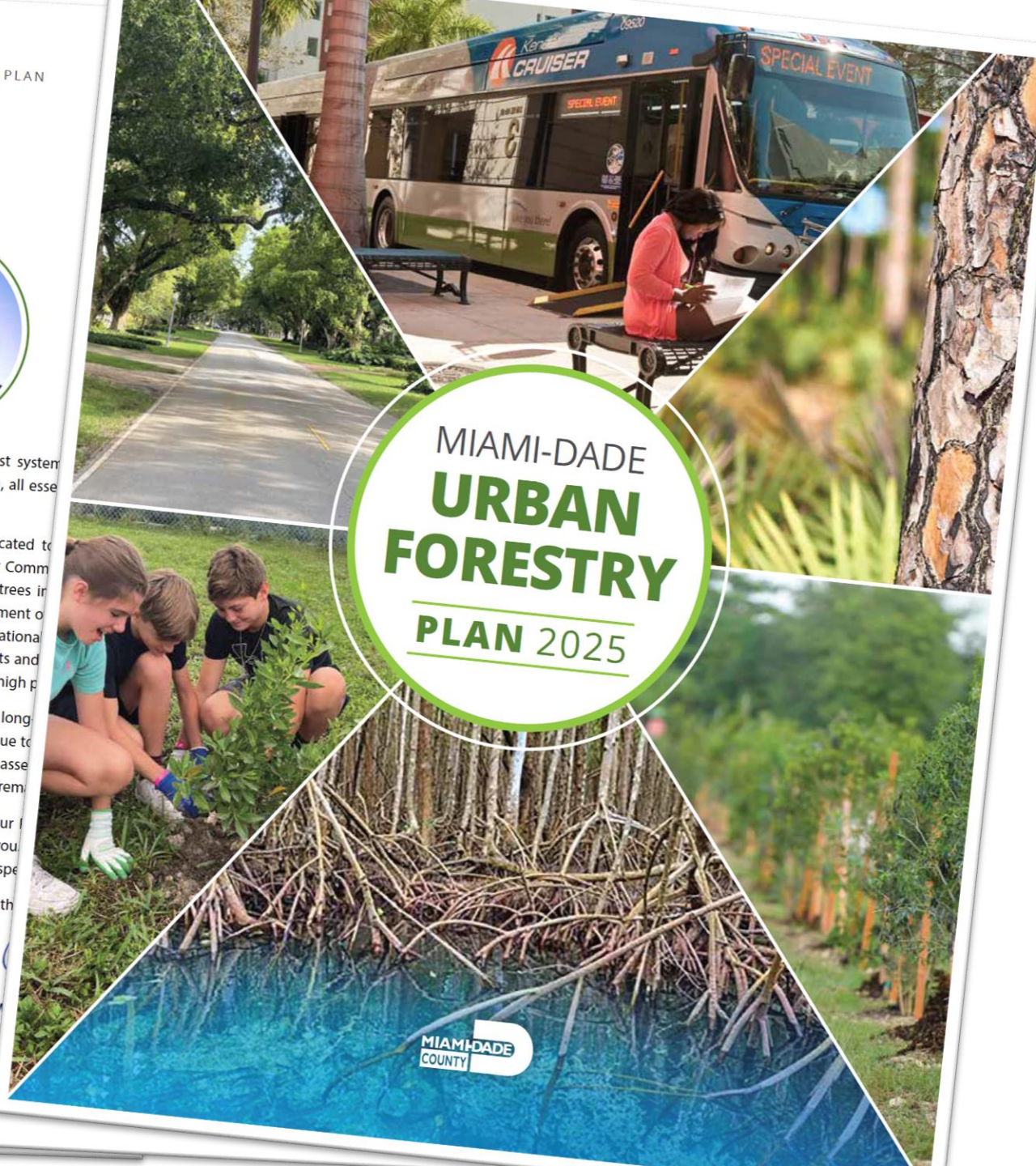
Thank you for your support in th

Daniella Levine



OFFICE OF THE M
DANIELLA LEV

MIAMI-DADE URBAN FORESTRY PLAN 2025



View the Plan
miamidade.gov/trees



Miami-Dade County Urban Forestry Plan

The Plan outlines
5 strategies with
34 actions to realize our
goal of 30% tree canopy
through an ecologically
sound and community-
driven approach.

- 1** Accelerate tree planting, maintenance & preservation on County land.
- 2** Expand private, municipal & institutional partnerships to accelerate public engagement & progress on canopy goals.
- 3** Advance planning, policy & regulatory opportunities to require & incentivize reforestation & establish dedicated funding.
- 4** Support growth of arborist & landscape jobs in the urban core & nursery businesses in South Dade.
- 5** Integrate systems for tracking tree canopy, tree inventory, vulnerabilities & progress.





View the Urban Forestry Plan
miamidade.gov/trees



billy

