

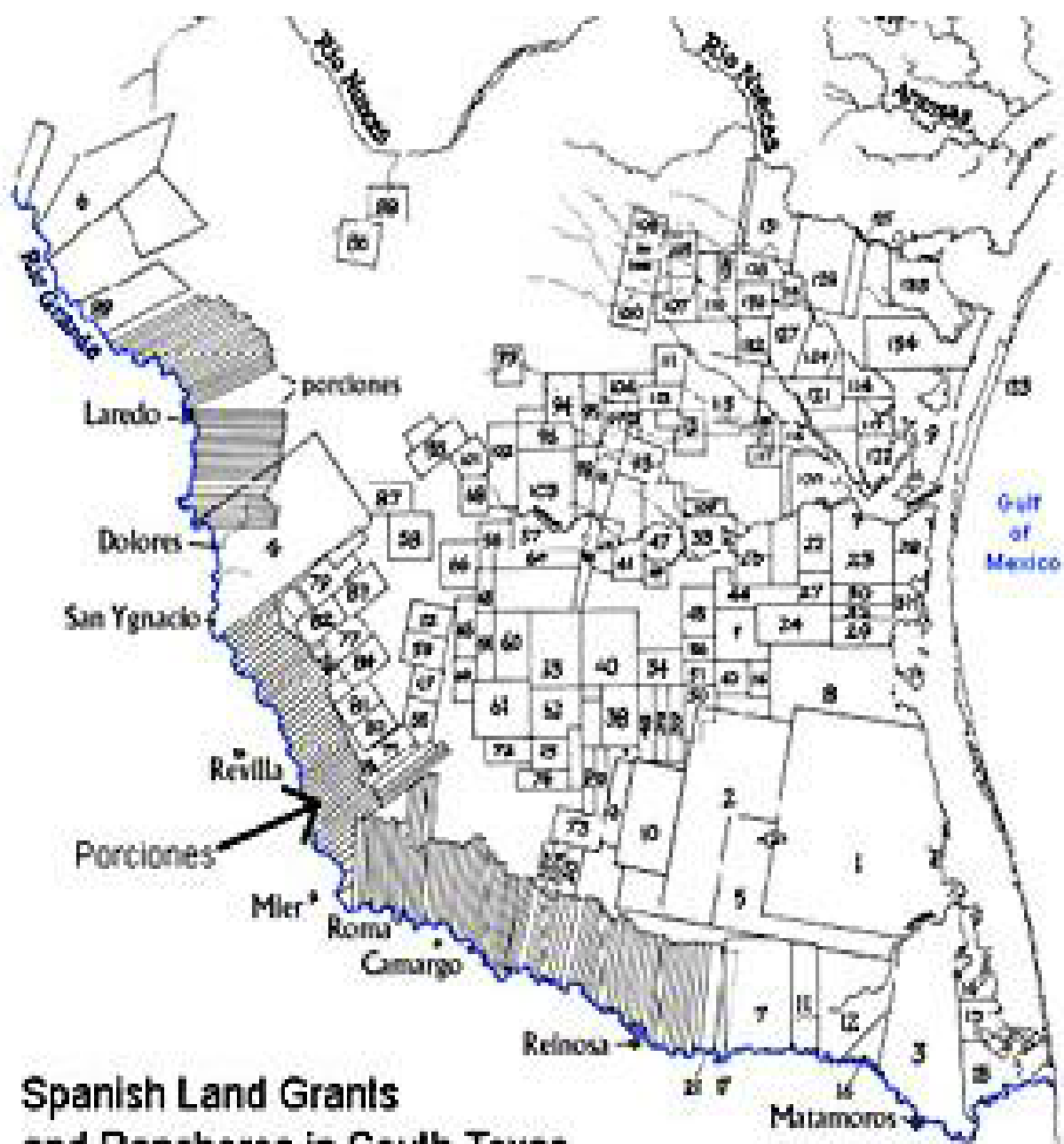


# THE TEXAS CITRUS INDUSTRY

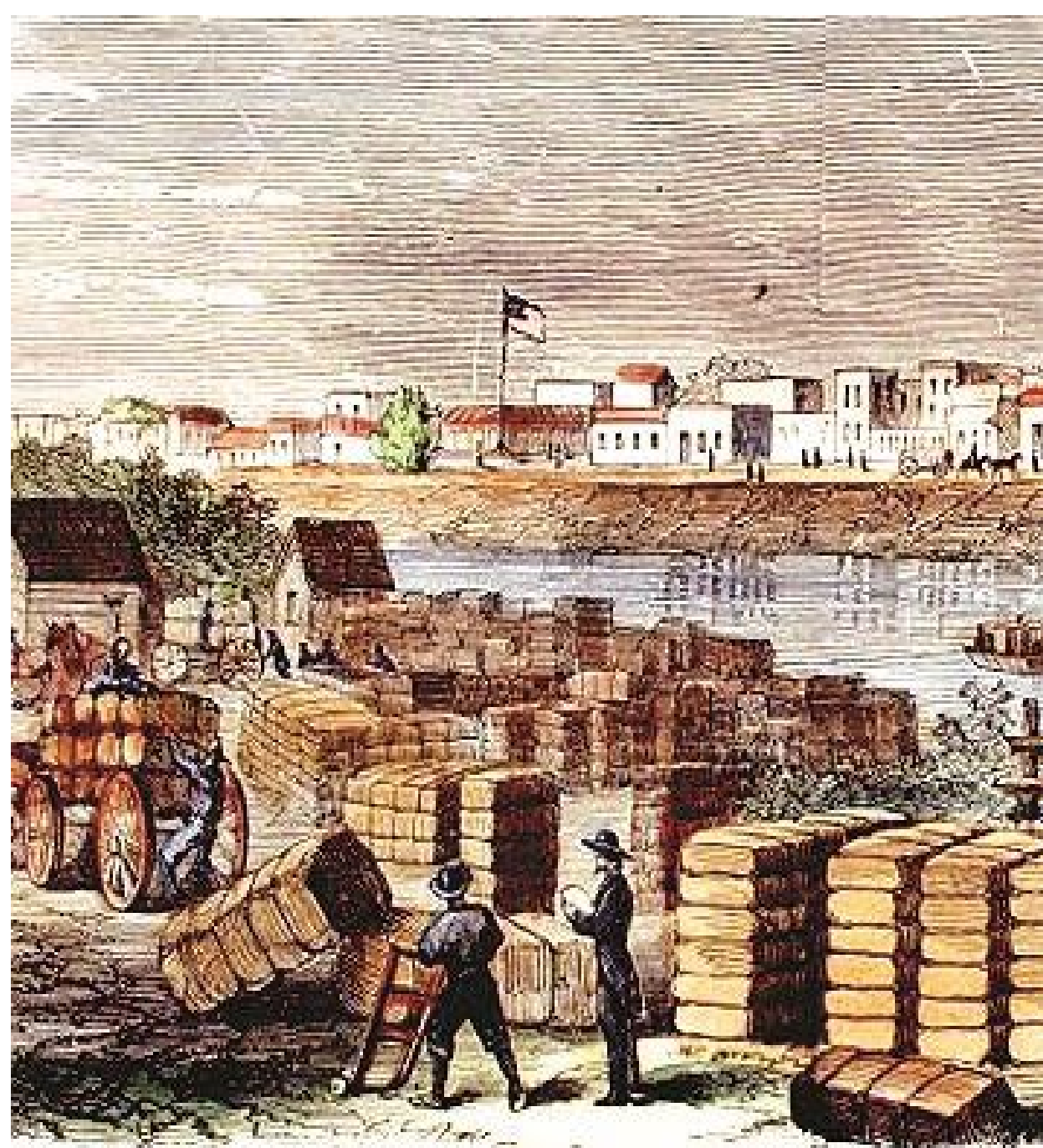
IN THE  
LOWER RIO GRANDE VALLEY

---

JUD FLOWERS



**Spanish Land Grants  
and Rancheros in South Texas**





**DEVELOPMENT MAP  
OF  
THE LOWER RIO GRANDE VALLEY  
OF TEXAS.**

SCALE:



REPUBLIC OF MEXICO  
State of Tamaulipas

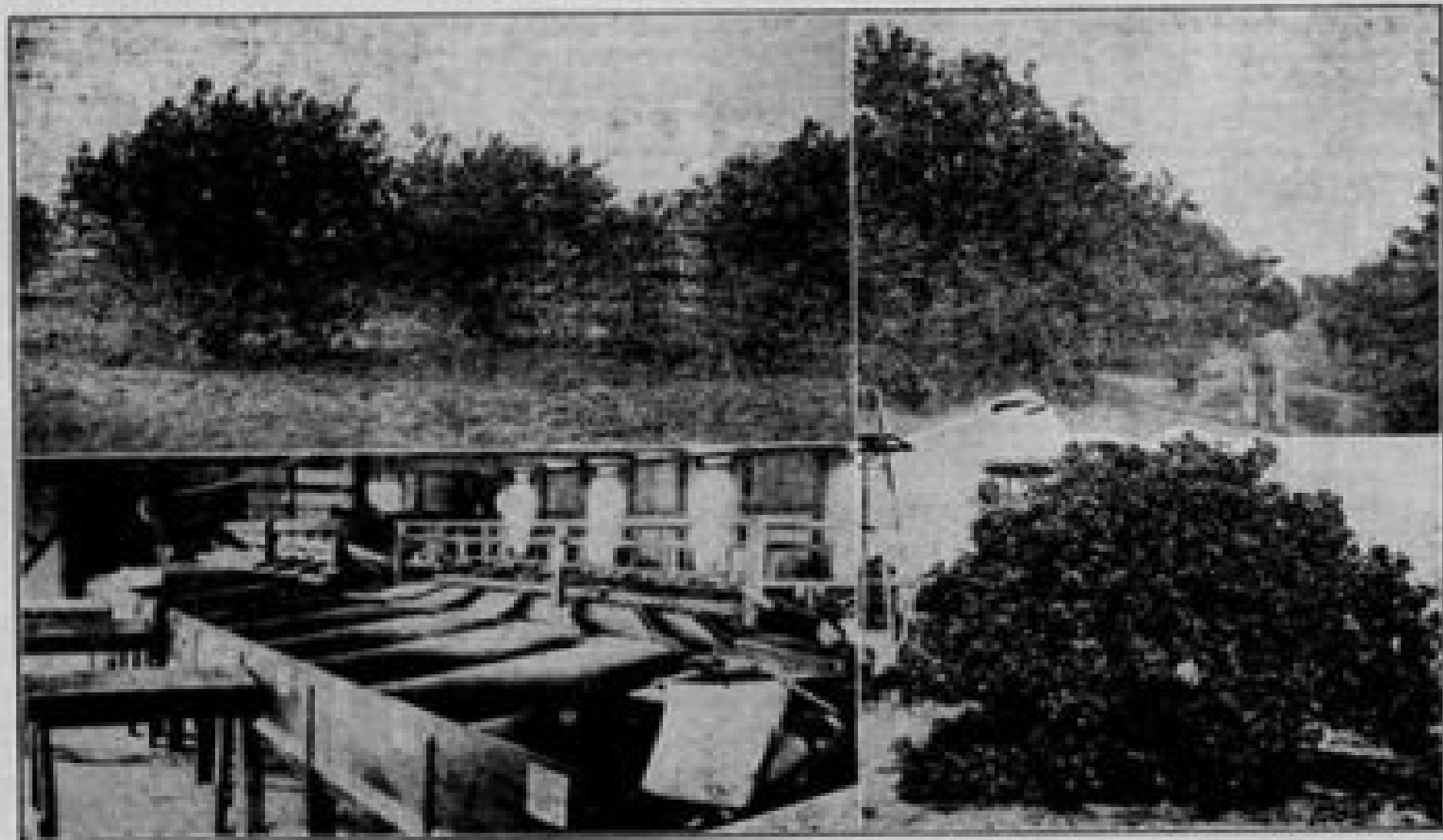
**LEGEND**

- STATE HIGHWAY
- MAIN MOTOR ROUTES
- BRANCH ROADS
- RAILROADS
- RAILROAD UNDER CONSTRUCTION
- PROPOSED RAILROAD
- INDUSTRIAL CANALS
- COUNTY BOUNDARY

TRAVER  
PUBLISHED AND FOR SALE BY  
FRANK E. EDGAR  
P.O. BOX 101  
SAN ANTONIO, TEXAS

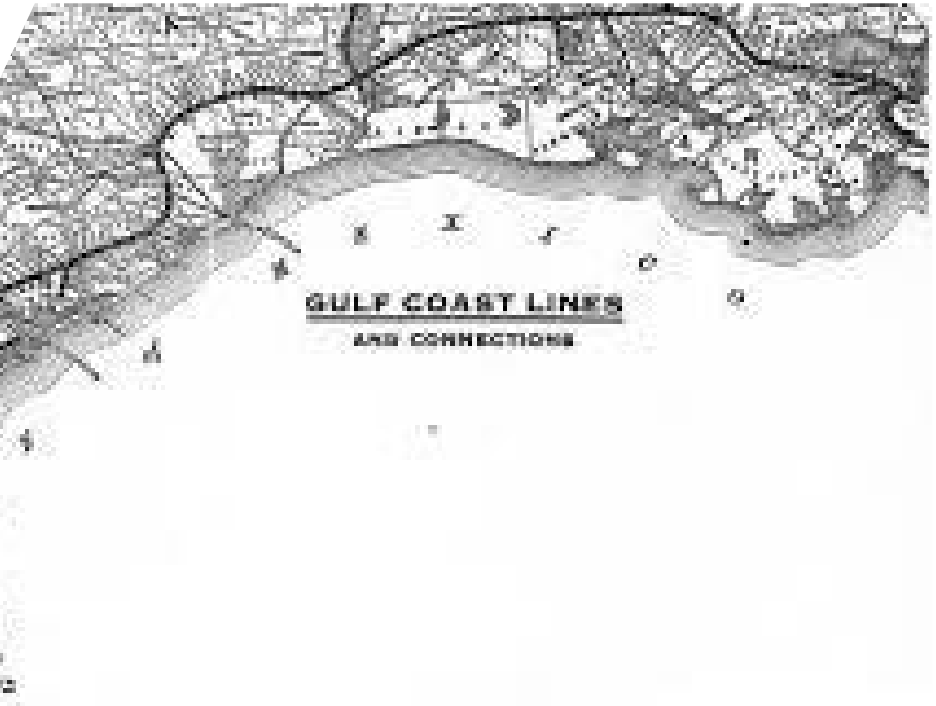
Copyrighted 1914  
All rights reserved

**Twenty-Four-Year-Old Citrus Grove Near Falfurrias, Oldest Commercial Grove in Texas**





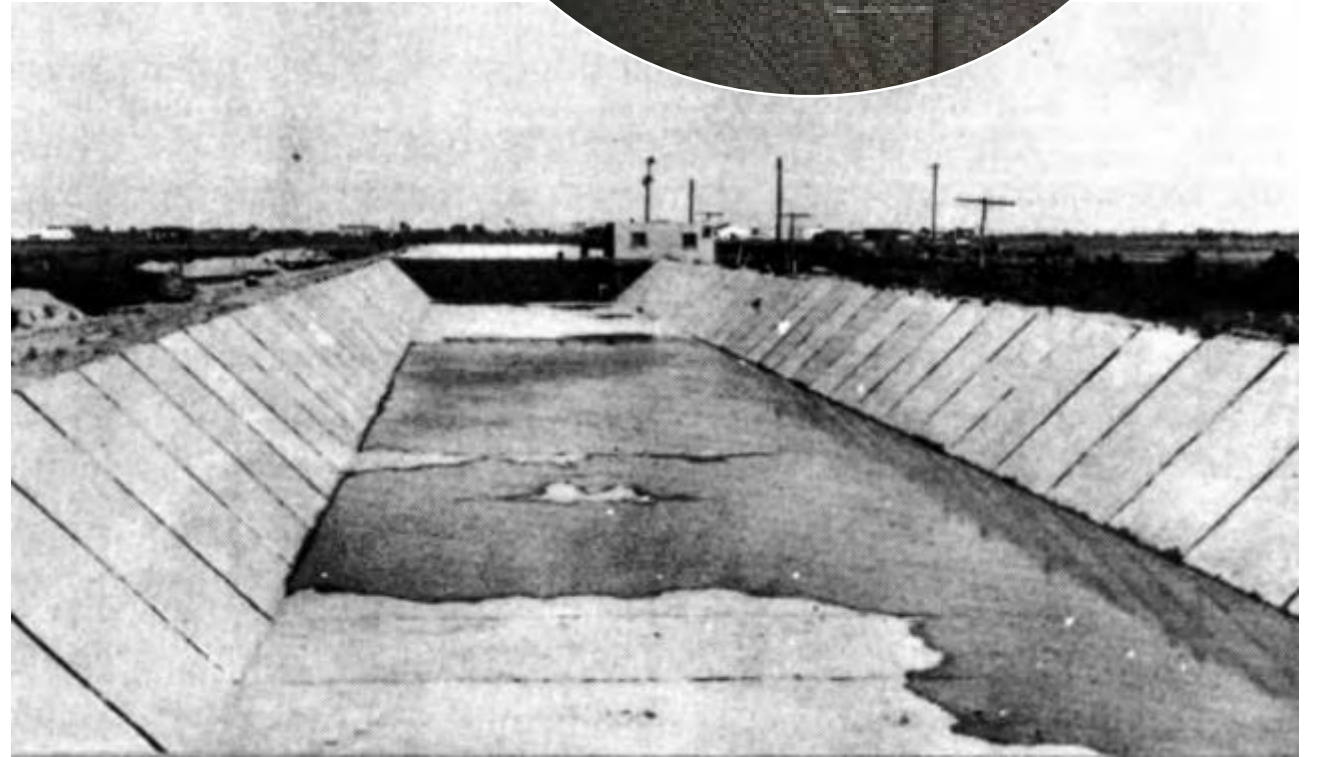
# St. Louis, Brownsville & Mexican Railroad







**John H. Shary**  
&  
**The Mission Canal**  
**Company**



# Standard Carton

90 lbs. of citrus





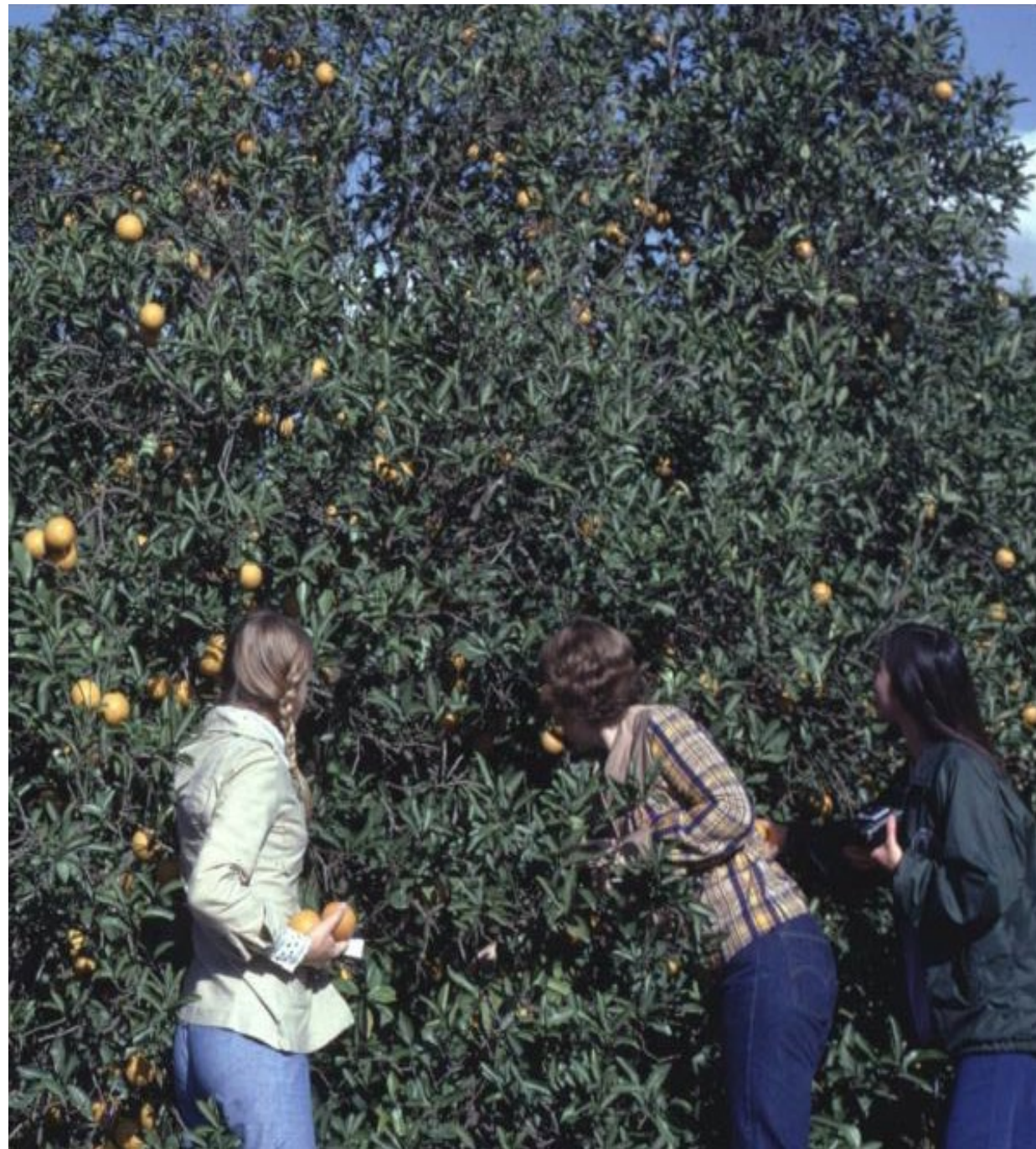


In Rio Grande Valley  
PARADISE



YOU CAN OWN A CITRUS GROVE NOW!

Home, Hobbies, Hobbies, For World's  
SWEETEST CITRUS FRUITS



# MAJOR WEATHER EVENTS

PAST  
105 YEARS

1916 FREEZE

1917 FREEZE

1919 FLOOD

1922 FLOOD

1933 HURRICANE

1948 DROUGHT

1949 DROUGHT & FREEZE

1951 DROUGHT & FREEZE

1952 DROUGHT

1953 DROUGHT & HURRICANE

1954 DROUGHT

1955 DROUGHT

1956 DROUGHT & HURRICANE

1957 DROUGHT

1962 FREEZE

1963 FREEZE

1983 FREEZE

1989 FREEZE

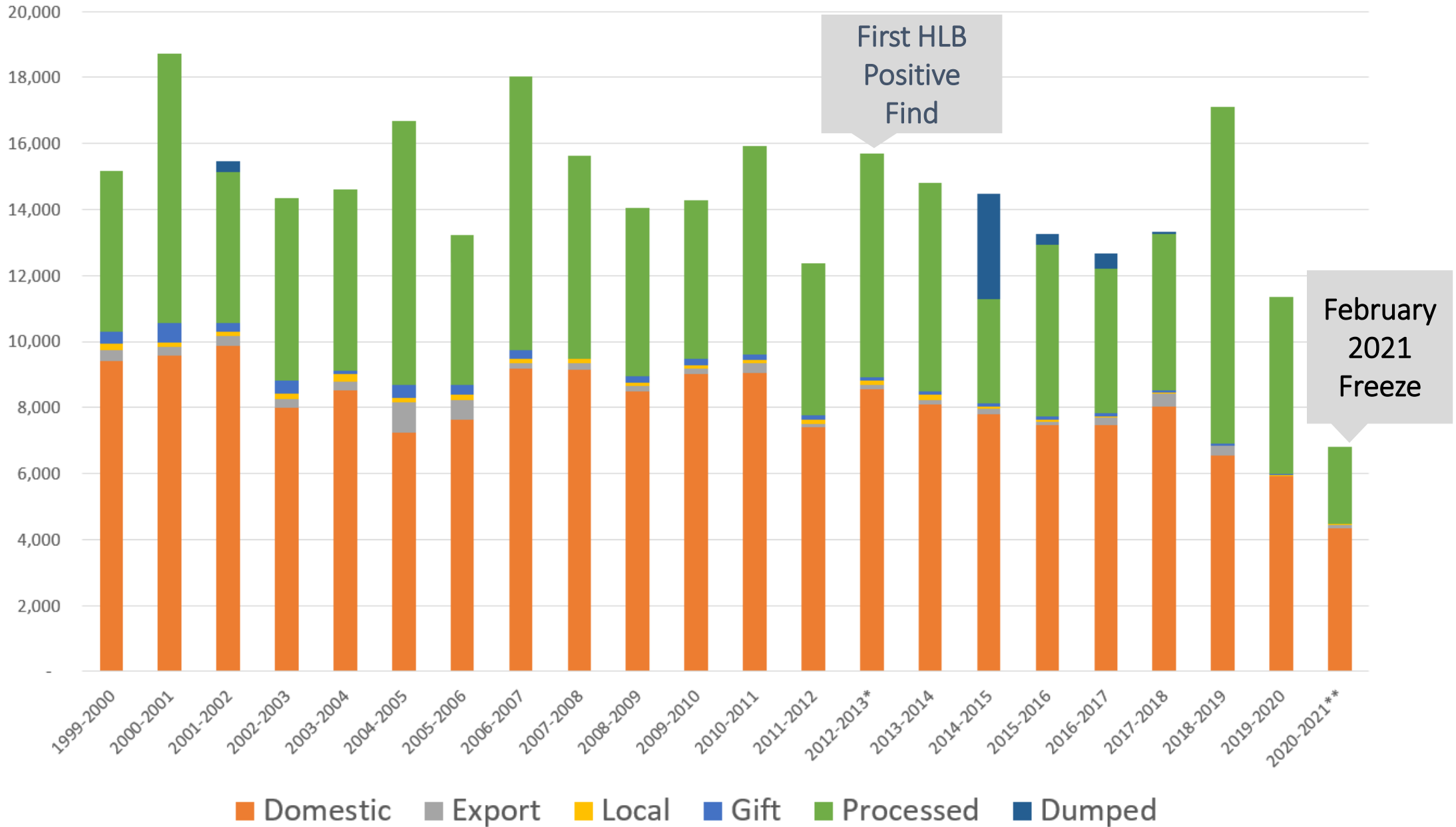
1993 FLOOD

2004 HURRICANE

2008 HURRICANE

2020 HURRICANE

Texas Citrus Shipments Over the Past 21 Years



# PRODUCTION

# GRAPEFRUIT & ORANGES

20 YEAR AVERAGE

**14,820,000** cartons

2000-2001 - HIGH YEAR

**18,711,000** cartons

HLB DISCOVERED IN  
2012-2013 SEASON

10 YEAR AVERAGE PRIOR TO HLB

**14,916,000** cartons

AVERAGE SINCE HLB

**14,087,625** cartons

2018-2019 – HIGH YEAR

**17,118,000** cartons

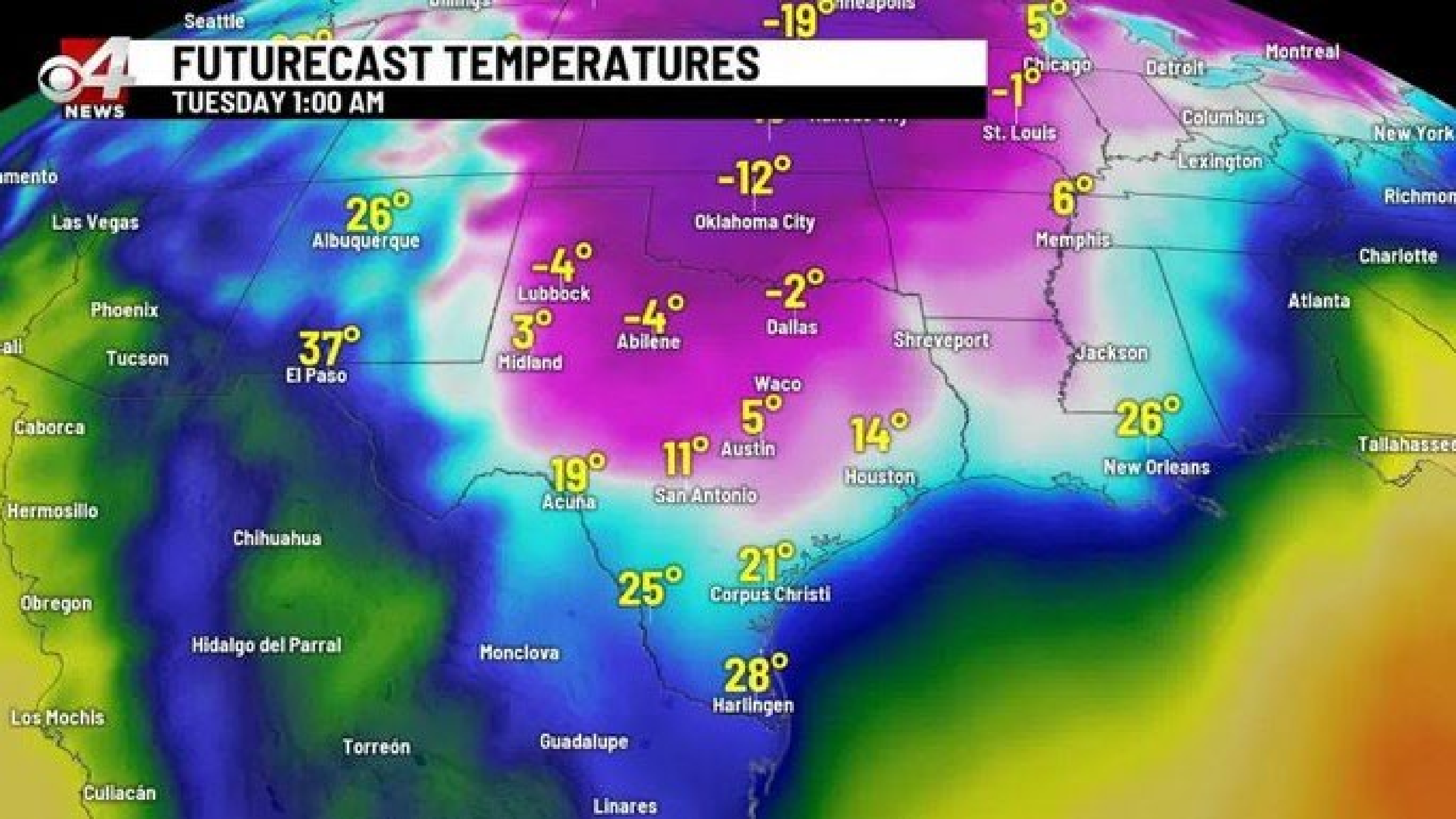


# LOWER RIO GRANDE VALLEY



# FUTURECAST TEMPERATURES

TUESDAY 1:00 AM







**THE VALENTINES DAY  
MASSACRE**







# Winter Storm Uri

## or the St. Valentine Massacre



Beginning the evening of February 14th, temperatures began to dip below 32 degrees.

The picture was a screenshot from my phone on the morning of the 15th.

We stayed at 21 degrees for 4 hours straight at my place that morning. All told we had over 60 hours at or below freezing.



-2.0  
°C

DellaTrak

BATT  
SIGNAL  
TEMP











A person wearing a white long-sleeved shirt and blue pants is shown from the waist down, holding two halves of a grapefruit in their left hand and a knife in their right hand. The background is a blurred outdoor setting with green leaves and brown soil.

# INITIAL ECONOMIC IMPACT

**\$80 MILLION**

Estimated loss of 2020-2021 CITRUS  
crop

**\$225 MILLION**

Estimated loss of 2021-2022 CITRUS  
crop

**1,000+**

Estimated job losses

**TOTAL ESTIMATED LOSSES**

**\$305 MILLION**



**TOO EXCITED FOR CAMERA TO FOCUS**





























2021-2022 HARVEST SEASON ONLY

**30%** OF A  
TYPICAL HARVEST



# PRODUCTION

# GRAPEFRUIT & ORANGES



FINAL HARVEST TOTAL

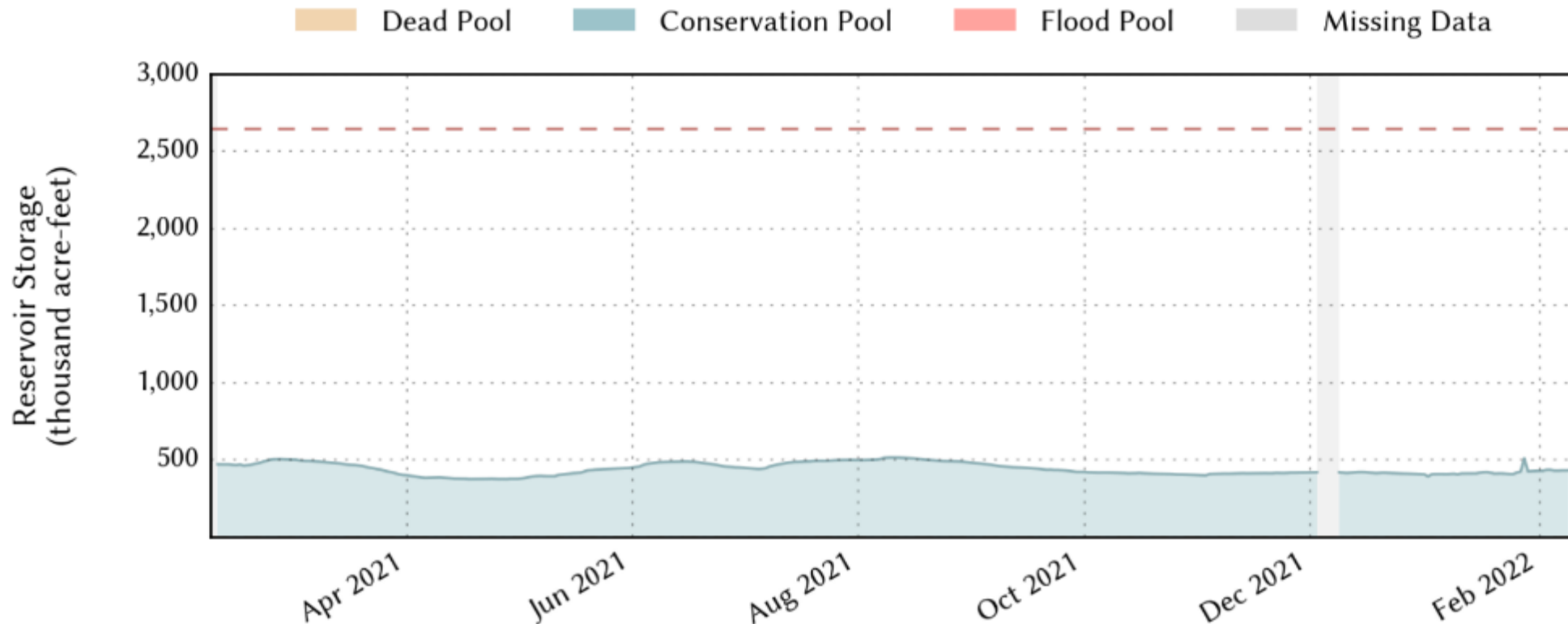
SEASON 2021 - 2022

**3,600,000** cartons  
on tree



# WATER AVAILABILITY

Falcon Reservoir: 23.4% full as of 2022-02-09



**Lake levels very low | Most districts are on allocation**

# CITRUS ACRES

# GRAPEFRUIT & ORANGES

2017 **23,977** acres

2018 **25,577** acres

2019 **25,802** acres

2020 **26,387** acres

2021 **26,189** acres

2022 **21,212** acres

## *Historical Note*

*Certified citrus acreages unavailable  
prior to 2017*

1,233 acres  
REMOVED

543 acres  
NEWLY PLANTED  
END OF JANUARY 2022

TREE SHORTAGES  
LIMITING REPLACEMENT



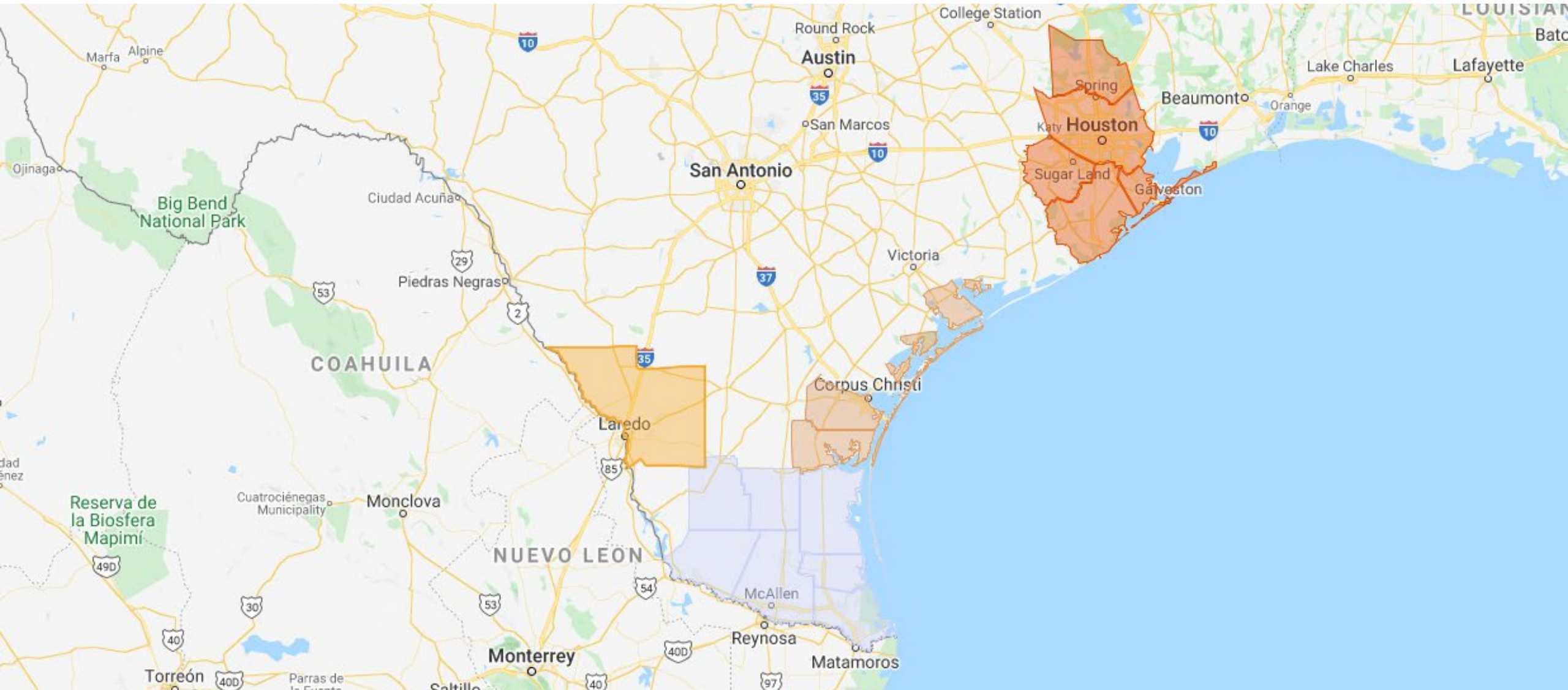








# HLB QUARANTINE



# CRaFT Program

**1,000 acres planted**  
**11 cooperators**













**Thank you.**

