



**CITRUSVIL**  
LEMON GROWING & PROCESSING



1

Lemon: Main Indicators

2

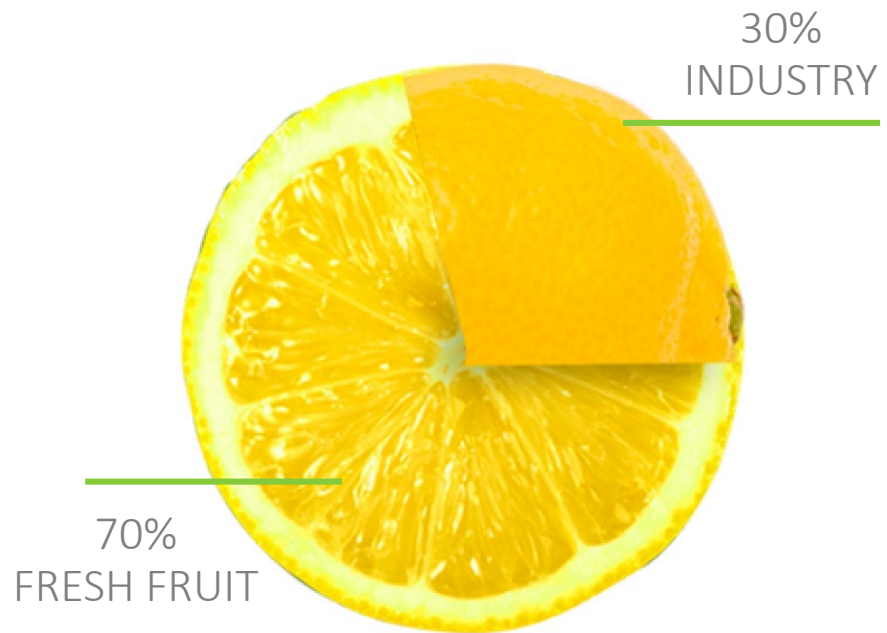
Citrusvil's Performance Indicators

3

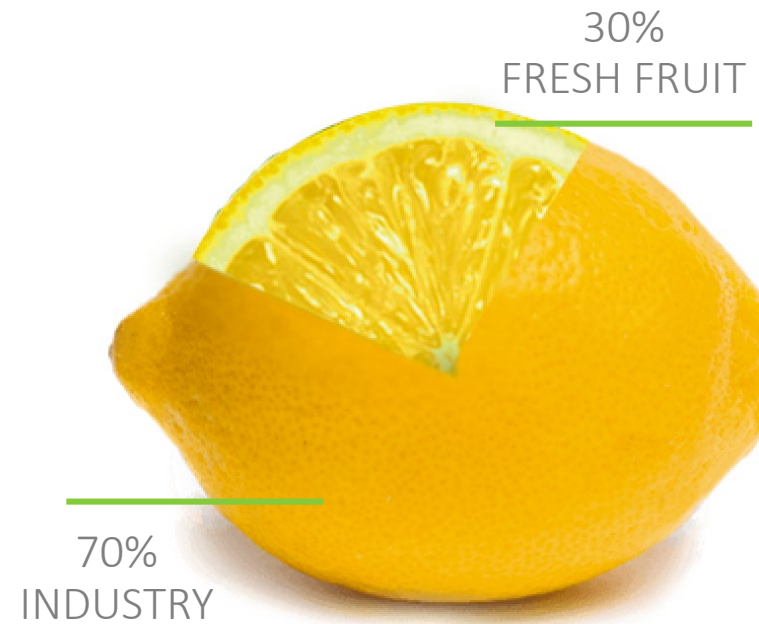
Citrusvil's Sustainable Development

# Product Destination

In the world



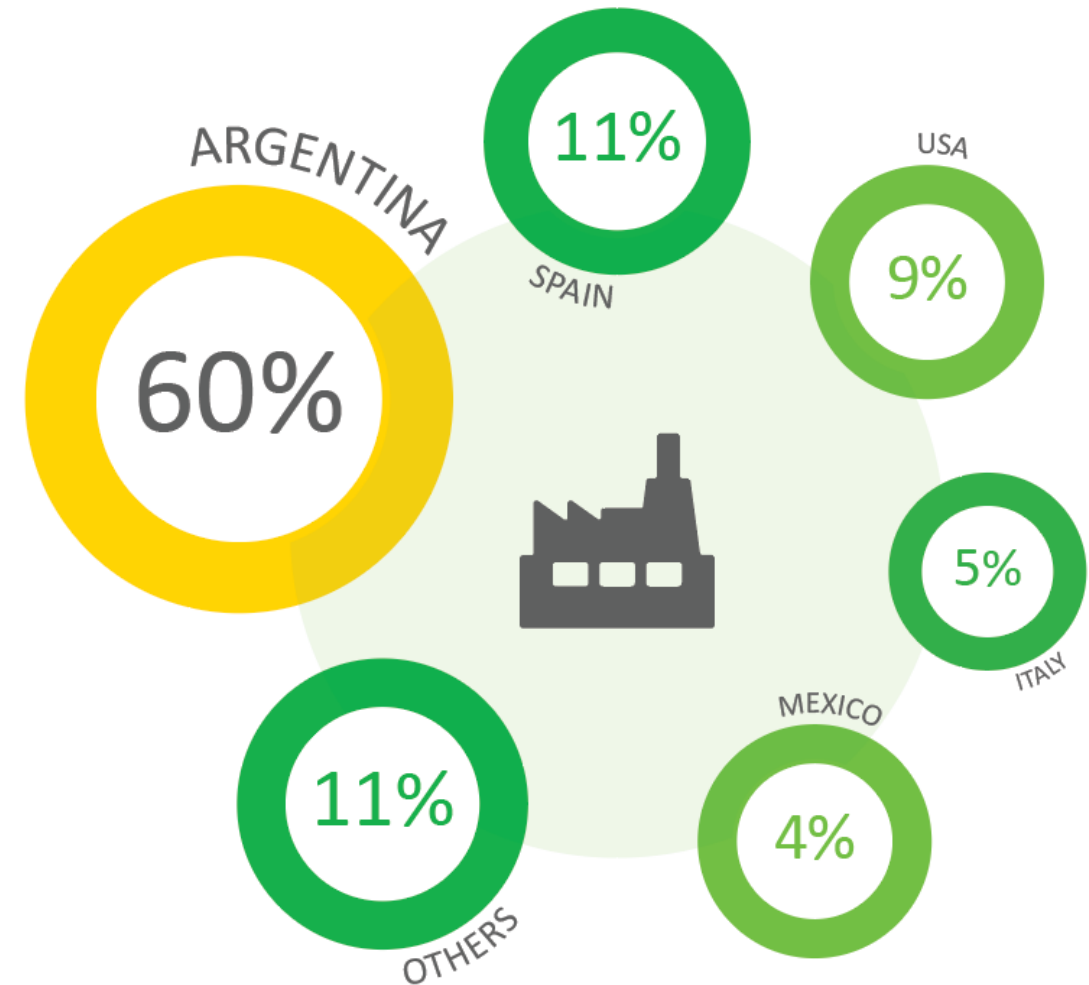
In Argentina



# Argentina's Share In The Lemon Processing Business Worldwide



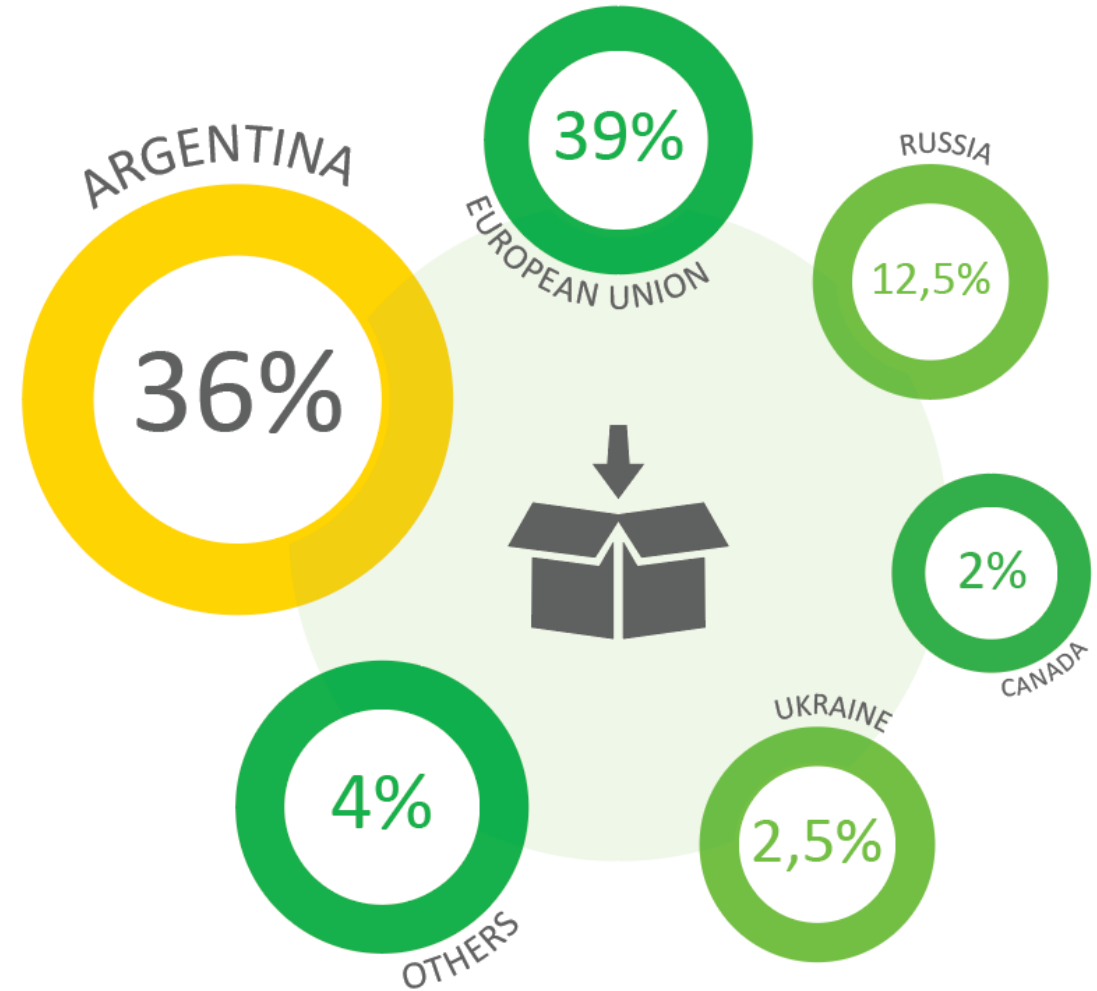
**ARGENTINA  
CONCENTRATES 60%  
OF GLOBAL LEMON  
PROCESSING**



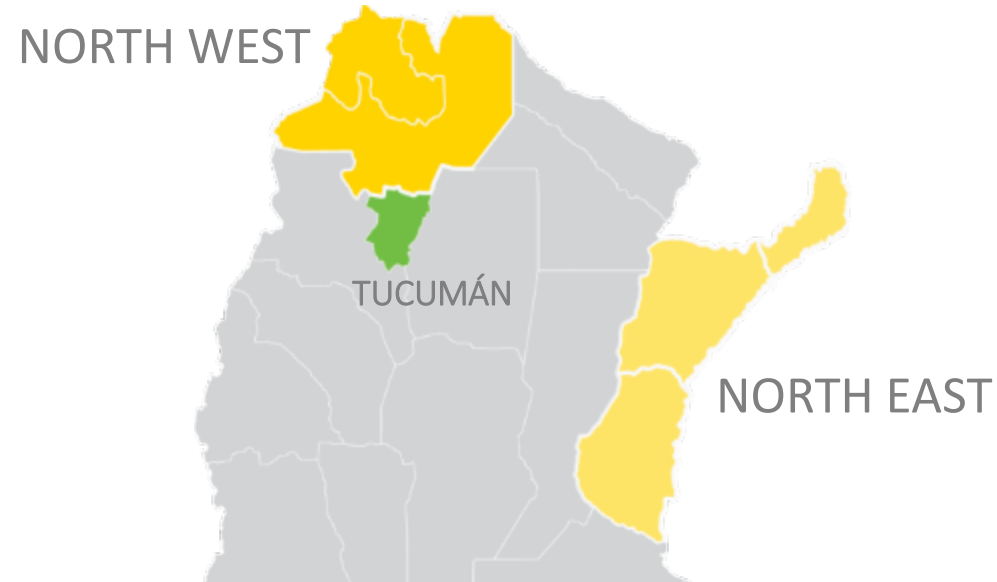
# Argentina's Share in the Fresh Fruit business Worldwide



**ARGENTINA  
CONCENTRATES  
36% OF GLOBAL  
FRESH FRUIT  
BUSINESS**



# Main Lemon Production Areas in Argentina



**55.000**

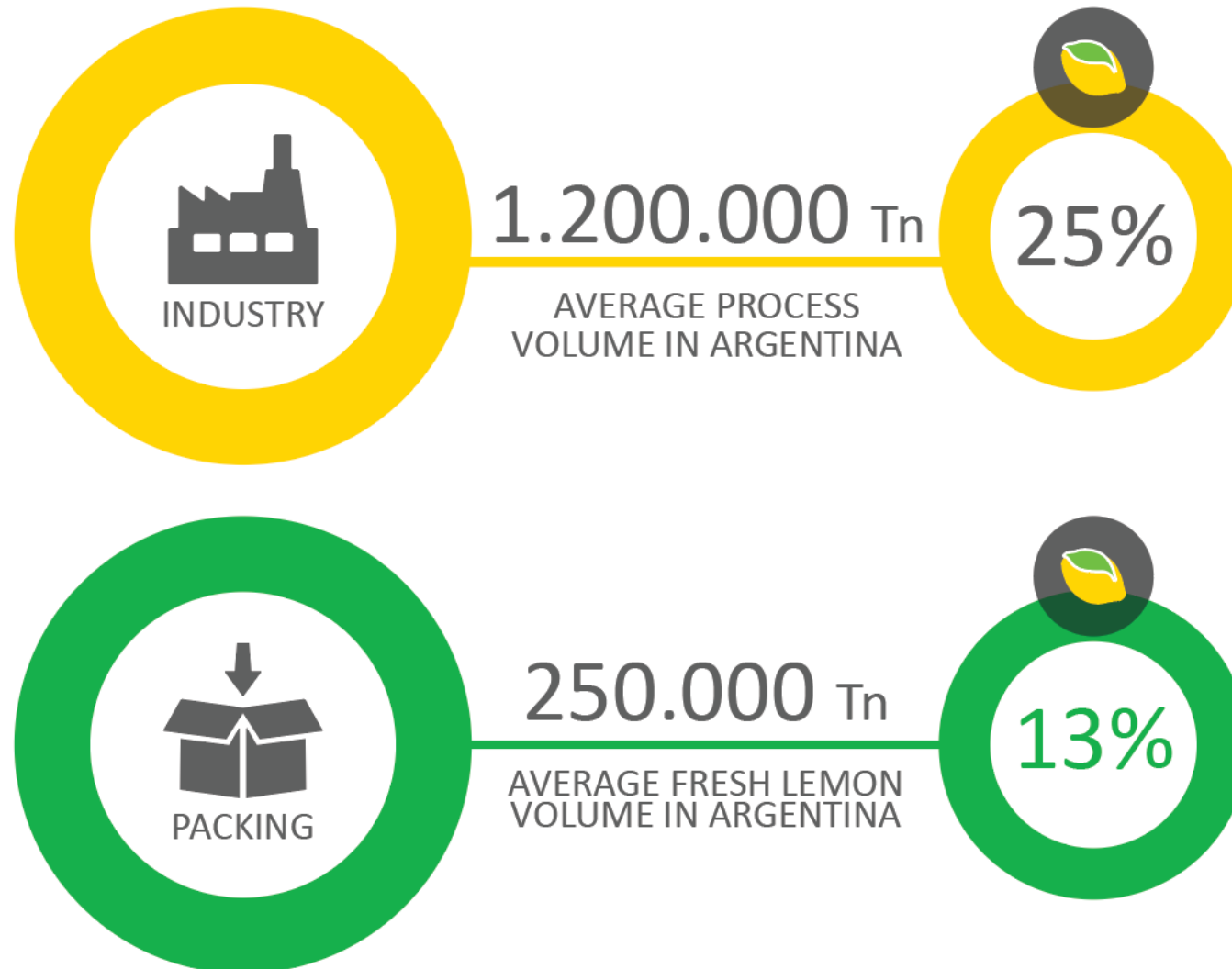
PRODUCTIVE Ha.  
(NORTH WEST)

**15.000**

NEW Ha.  
(NORTH WEST)

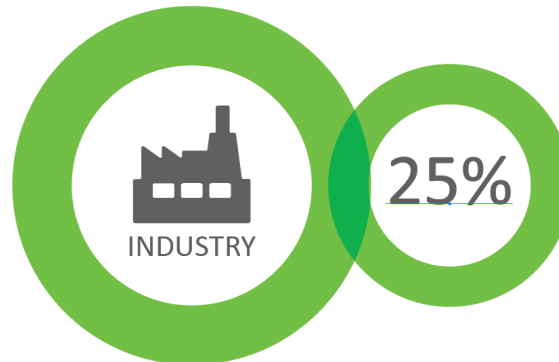
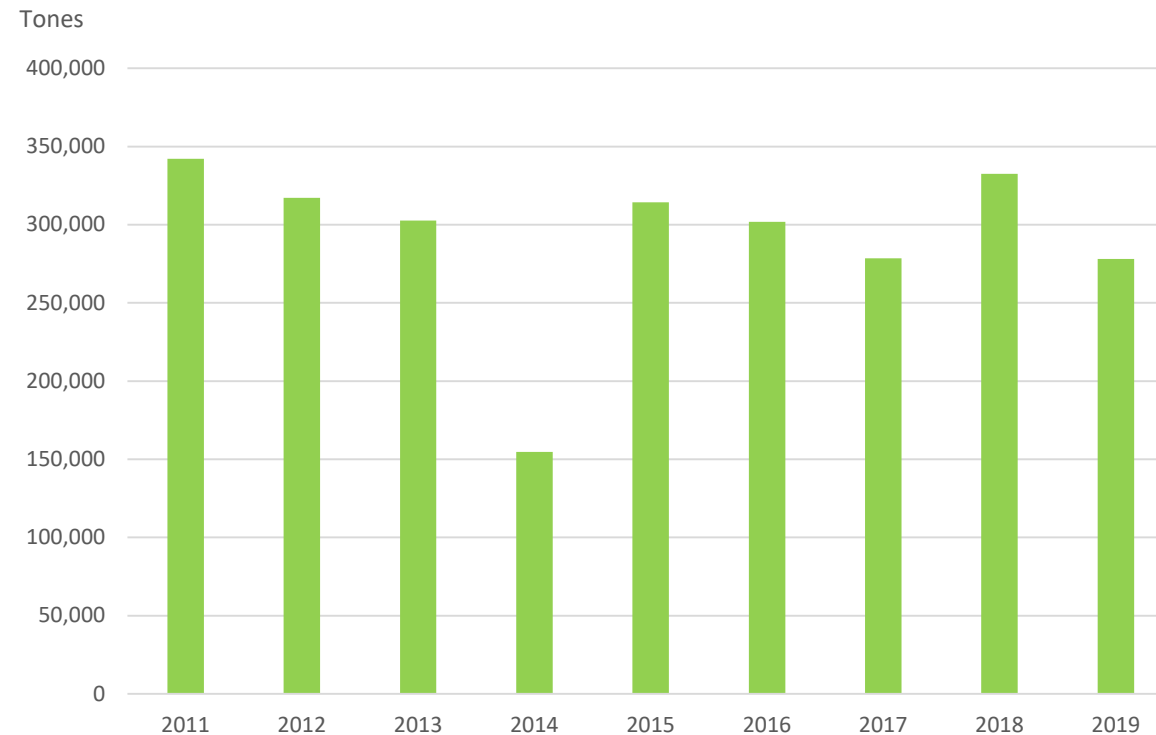


# Citrusvil's Share In The Argentine Lemon Business





# Citrusvil's Industrial Volumes



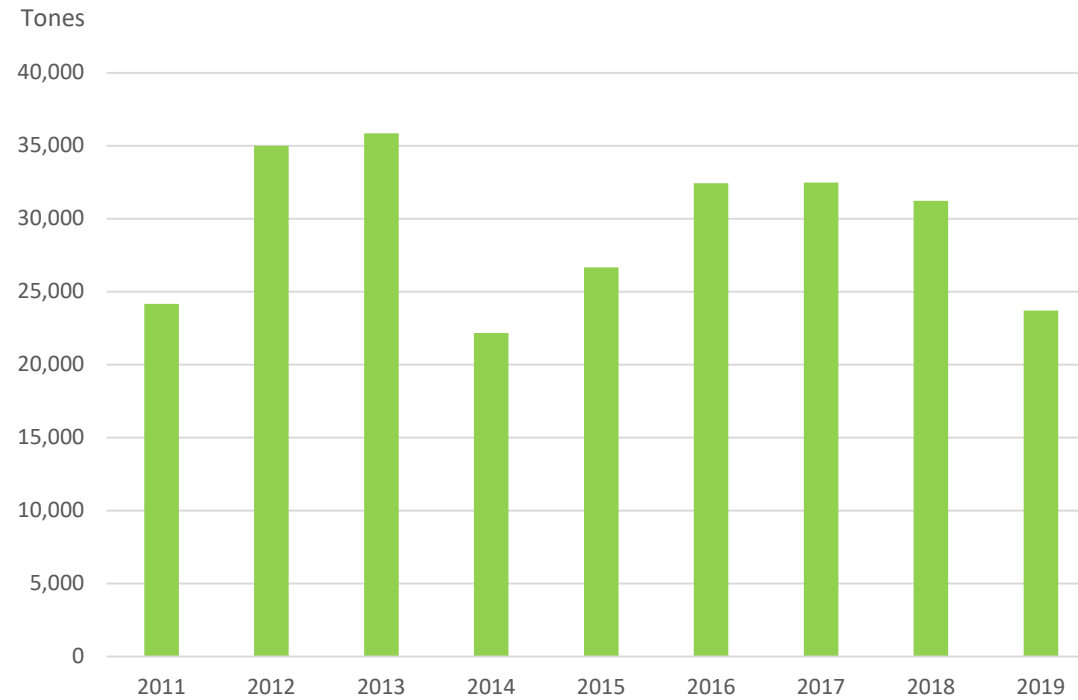
## Industry

Citrusvil's share in the Argentine Industrial Business is 25%





# Citrusvil's Lemon as Fresh Fruit Volumes



PACKING

13%

## Fresh Fruit

Citrusvil's share in the Argentine Fresh Fruit Business is 13%





1

Lemon: Main Indicators

2

Citrusvil's Performance Indicators

3

Citrusvil's Sustainable Development



# Citrusvil's Industrial Complex







**50 years**  
of experience



**120.000**  
lemon plants  
produced in our  
nursery per year



**7.000**  
productive  
Ha



**2 Industrial  
plants**  
300.000 Tn  
installed capacity  
per year



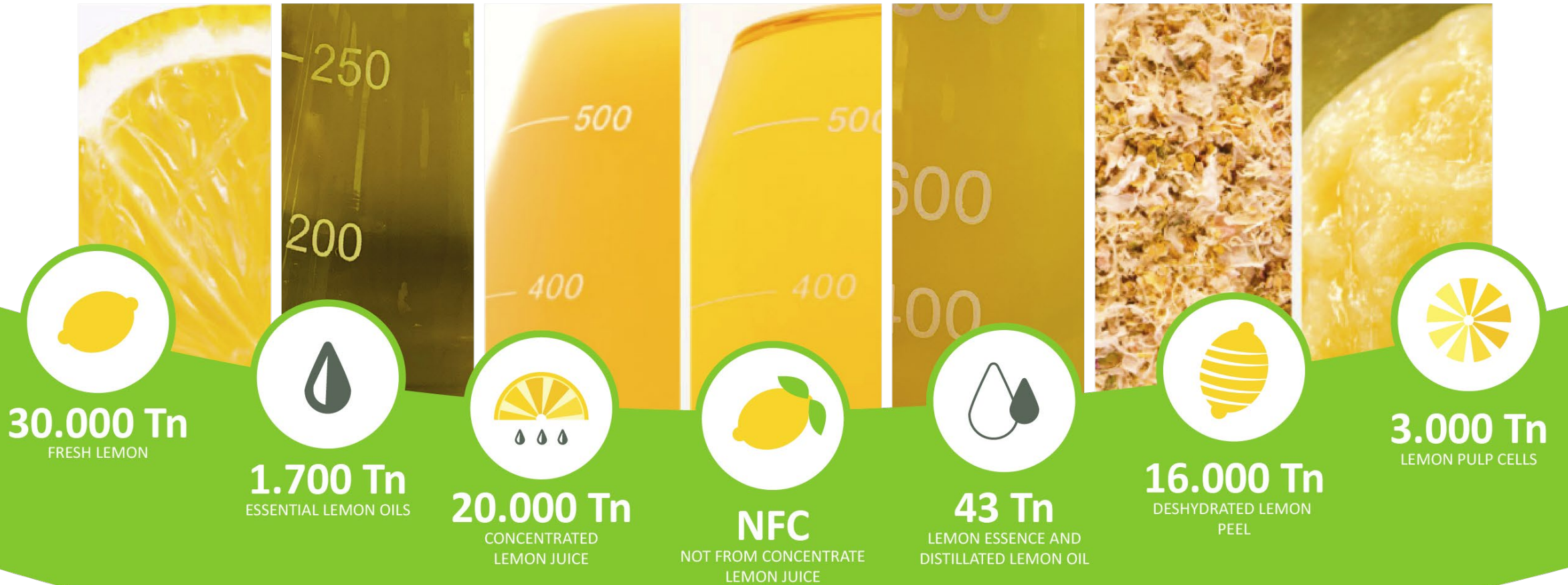
**2 Packing  
houses**  
50.000 Tn  
installed capacity  
per year



**We export**  
to more than 50  
countries in 5  
continents



# Our Products



\*Vol. Industrial products to a milling level of 300.000 Tn





A world map illustrating the global distribution of the company's representative offices and destination countries. The map is color-coded by region: North America (light blue), South America (light green), West Europe (light orange), East Europe (light purple), Africa (light yellow), Asia (light pink), and Oceania (light teal). Representative offices are marked with blue icons, and destination countries are marked with red dots. The map shows a high concentration of offices in North America and Europe, with a more dispersed network in Asia and Oceania. A legend at the bottom identifies the blue icon as 'REPRESENTATIVE OFFICES' and the red dot as 'DESTINATION COUNTRIES'.

# Citrusvil's Value Chain

**NURSERY**  
120.000 PLANTS  
PRODUCED PER YEAR



**OWN PRODUCTION**  
257.000 Tn  
(2019)



**3rd PARTY SUPPLIERS**



**24 ORCHARDS**  
7.000 PRODUCTIVE Ha  
5.200 NATIVE FOREST Ha



**EMPLOYEES**  
**4.500 PEOPLE**

ARE HIRED FROM  
MARCH TO SEPTEMBER  
HARVESTED 275.000 Tn  
(2018)



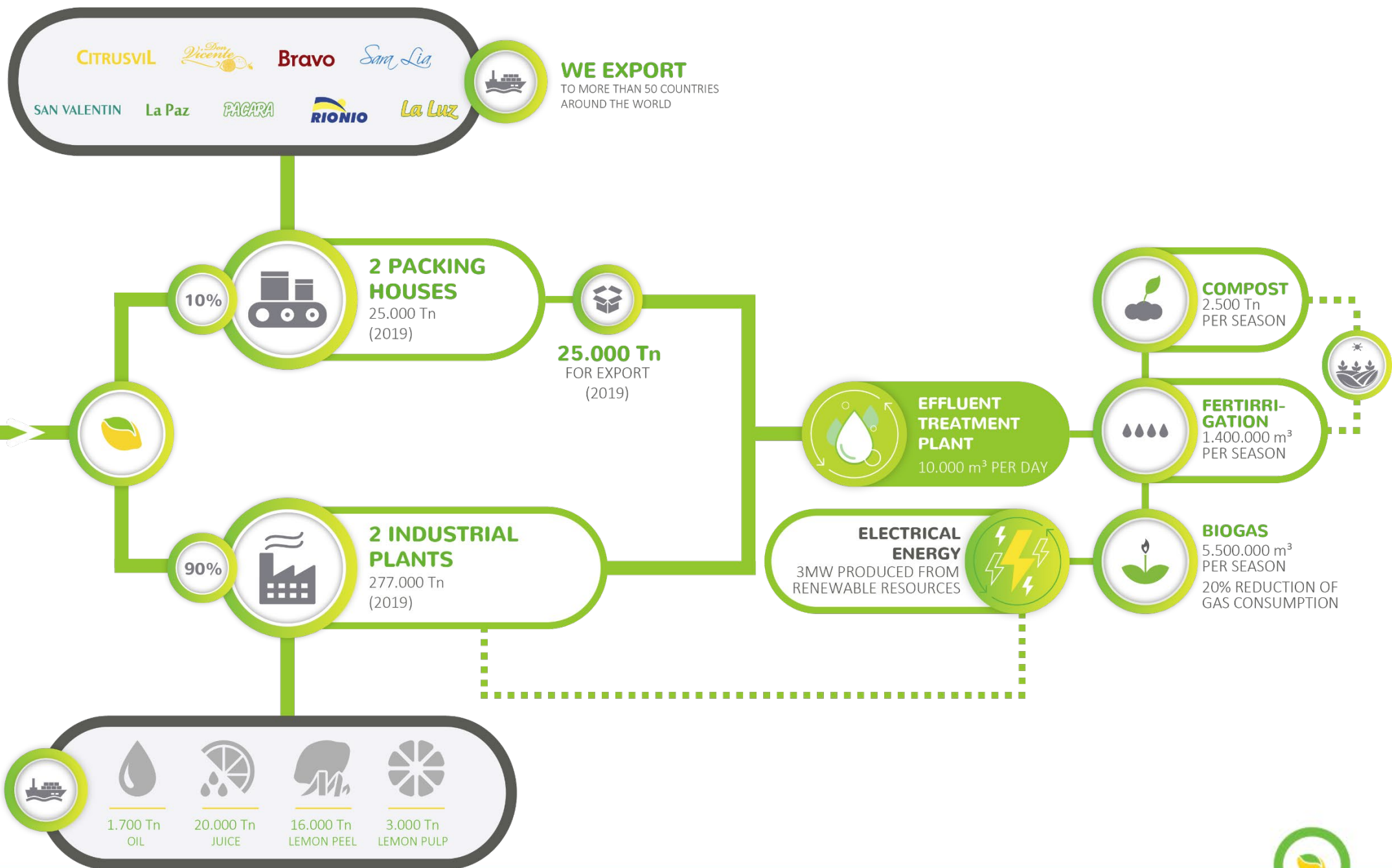
**2 PACKING HOUSES**  
25.000 Tn  
(2019)



**2 INDUSTRIAL PLANTS**  
277.000 Tn  
(2019)









1

Lemon: main indicators

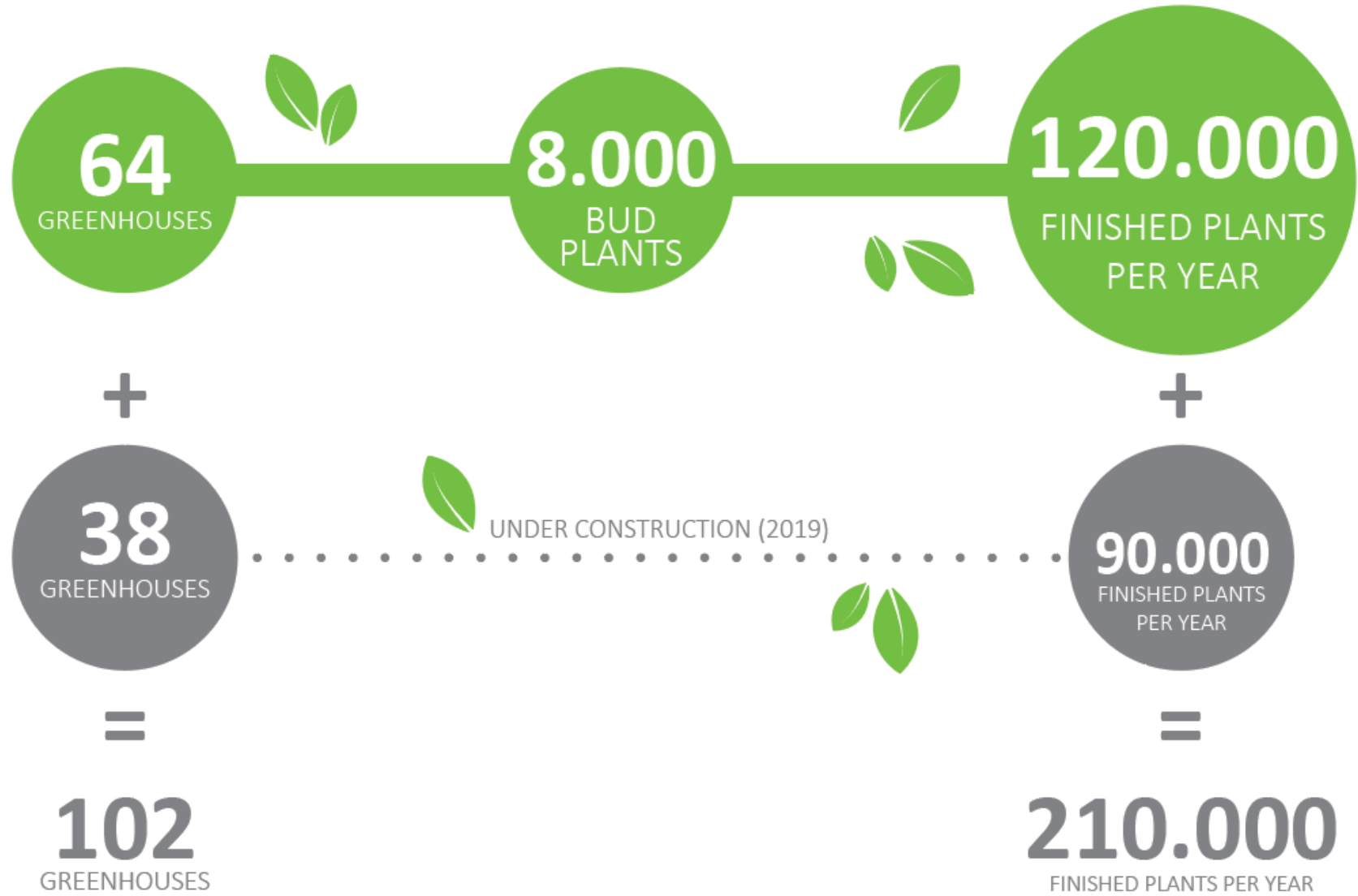
2

Citrusvil's performance indicators

3

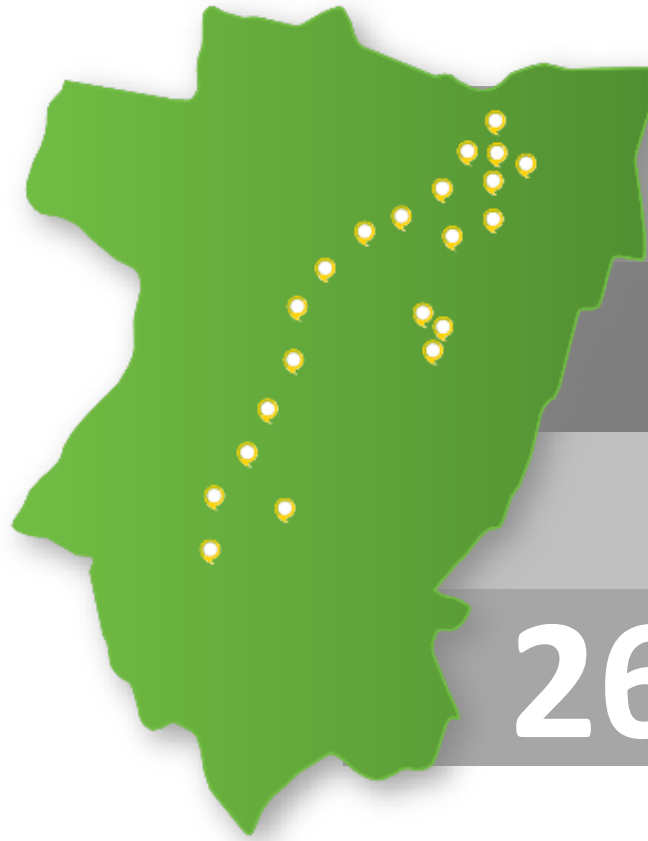
Citrusvil's Sustainable development

# Our Nursery





## Our Orchards



**24** ORCHARDS

**7.000** PRODUCTIVE HA  
**817** NEW HA

**5.200** HA. OF NATIVE  
FOREST

**260.000** TN / YEAR  
(ESTIMATED 2019)



**4.500**

EMPLOYEES ARE HIRED FOR  
THE HARVEST PER SEASON  
(MARCH - SEPTEMBER)



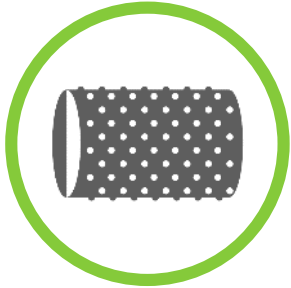


# Effluent Treatment Plant

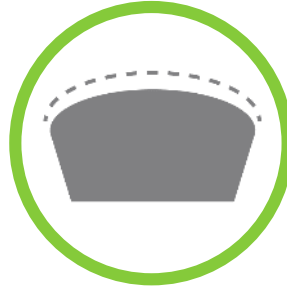


# Effluent Management

Citrusvil has been the first citrus industry in the world, to produce biogas from its own effluent.



PRE-TREATMENT



BIODIGESTION



POST-TREATMENT

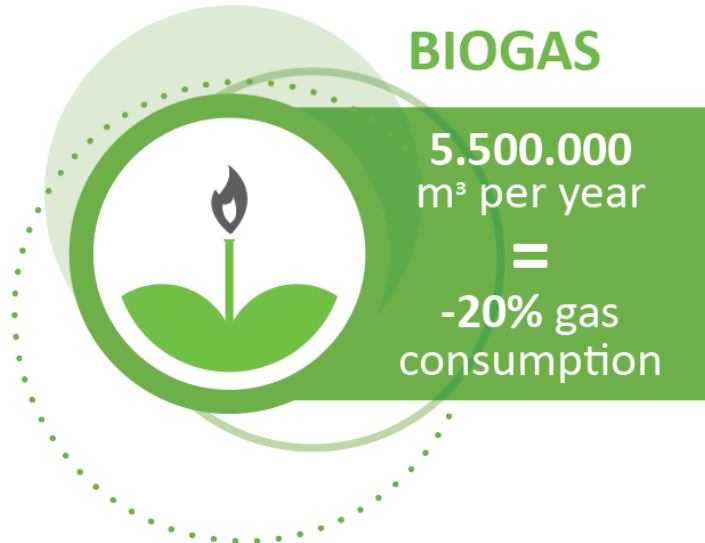
COMPOST

2.529 Tn of  
compost  
produced  
per year



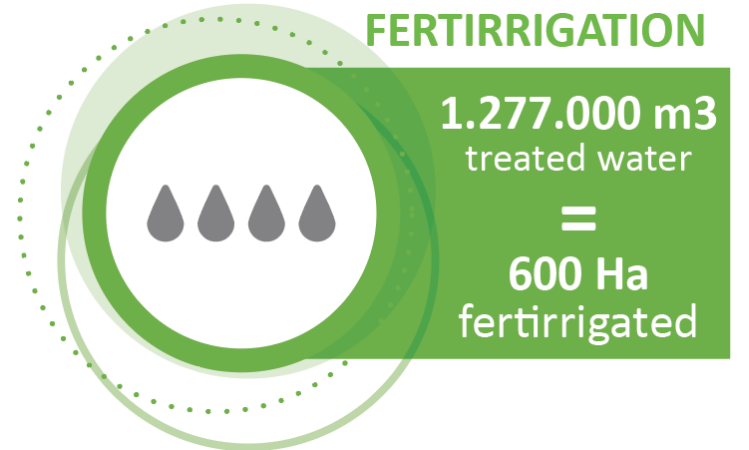
BIOGAS

5.500.000  
m<sup>3</sup> per year  
=  
-20% gas  
consumption

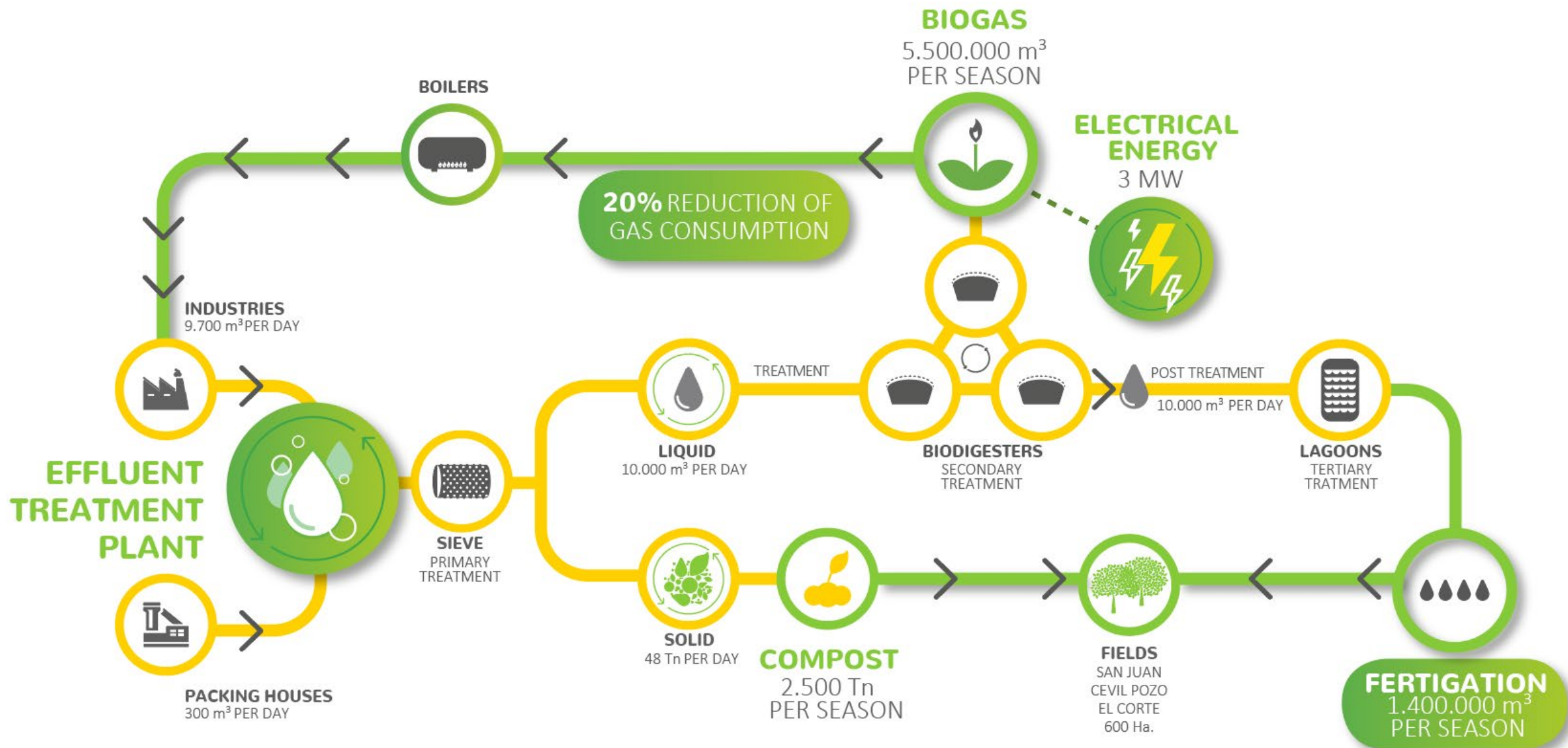


FERTIRRIGATION

1.277.000 m<sup>3</sup>  
treated water  
=  
600 Ha  
fertirrigated





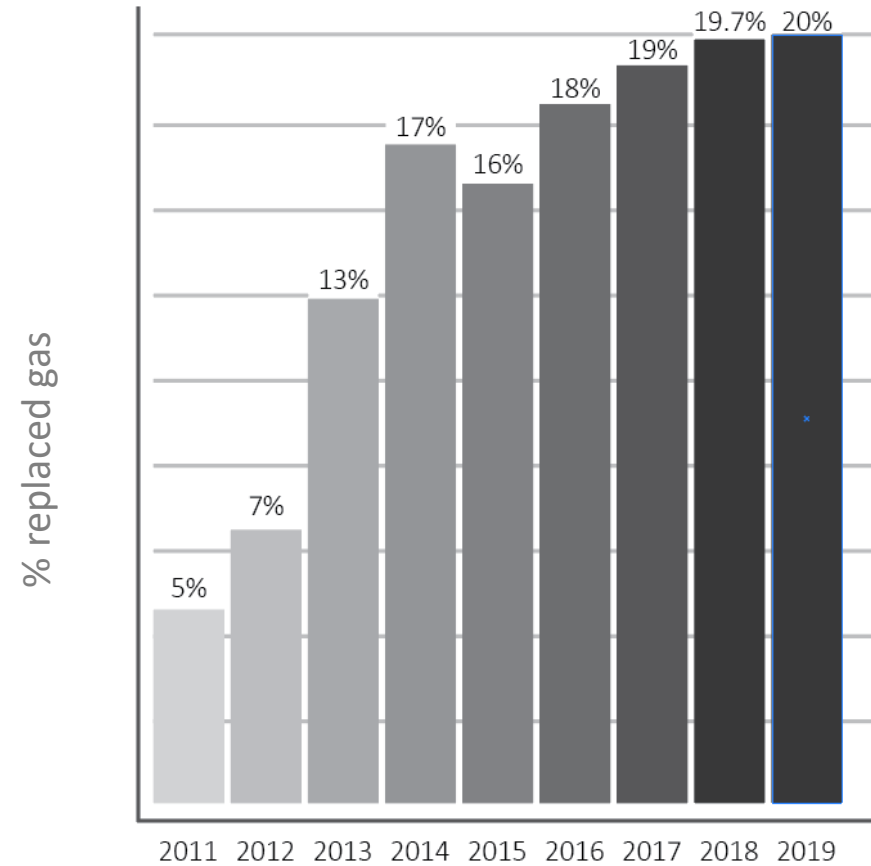




# Efficient Energy Consumption



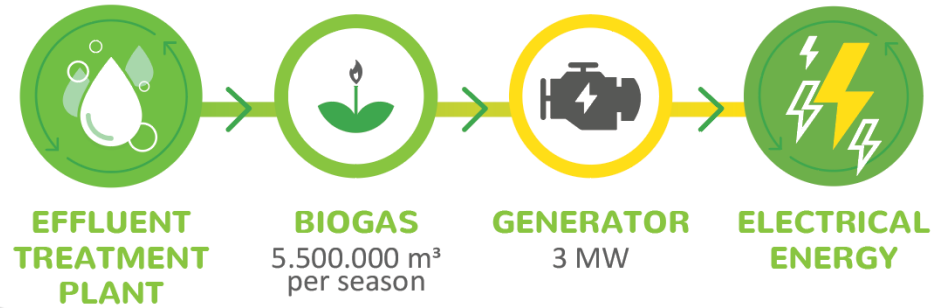
**20%**  
reduction of gas  
consumption



The Biogas captured in our Effluent Treatment Plant, is used at our industries boilers.



# Electrical Energy Generation From Biogas



Within the framework of the “**RenovAr**” national program, whose goal is to promote the production and use of renewable energies in Argentina, Citrusvil presented a Project of Electric Power Generation, from the Biogas it produces.

## RenovAr



Citrusvil will sell electrical energy to the national grid, with a power of 3MW.







## Organic Solids Management

In Citrusvil, 100% of the solid effluent is composted

**2.529 Tn**  
of compost



REDUCTION



RECYCLING

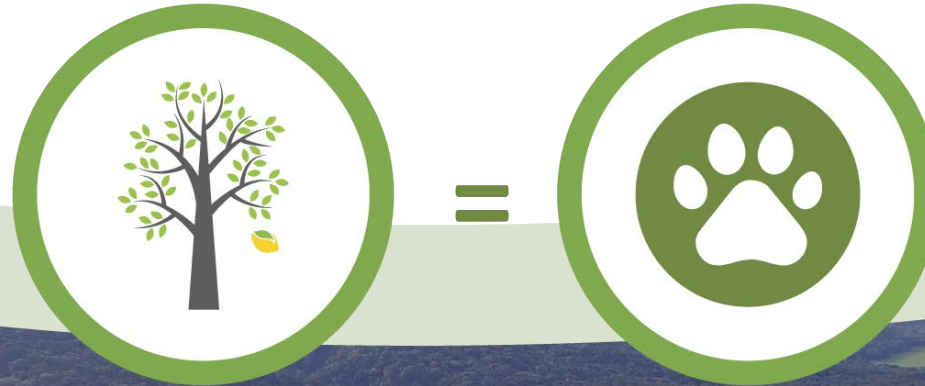


RECUPERATION





# Biodiversity



for each  
productive  
Ha

0.75 Ha  
of Native Forest



Together with ProYungas, we integrate our production  
with the conservation of biodiversity



**2016**

**TERRITORIAL  
PLANNING**

To understand the  
enviromental context in  
which we carry out our  
productive activities



**2017**

**MONITORING OF  
BIODIVERSITY**

Survey of  
vegetation and  
mammals using  
trap cameras



**BIODIVERSITY**

**2018**

**PROTECTED PRODUCTIVE  
LANDSCAPE PROGRAM**

It integrates Production  
with the conservation  
of Biodiversity







Don Vicente, located in Burruyacú, has a 3.151 Ha covered surface, of which **1.411 Ha make up the Natural Reserve**. This Reserve has a management plan and is attached to the **Argentine Network of Private Nature Reserves, since 2018**.



# Certifications

We have an integrated management system, which is based on the quality and safety of our products, the preservation of the environment, and the safeguarding of the health and safety of our personnell.





# Corporate Social Responsibility

Education and development of regional economies  
With the motivation of adding value to the sustainable development in northern Argentina, since 2003 we contribute to education, employability, and entrepreneurship.



**39 Schools**  
from Tucumán, Salta,  
Catamarca  
and Santiago del Estero



**250 Students**  
volunteered in our programs  
through their professional  
practices



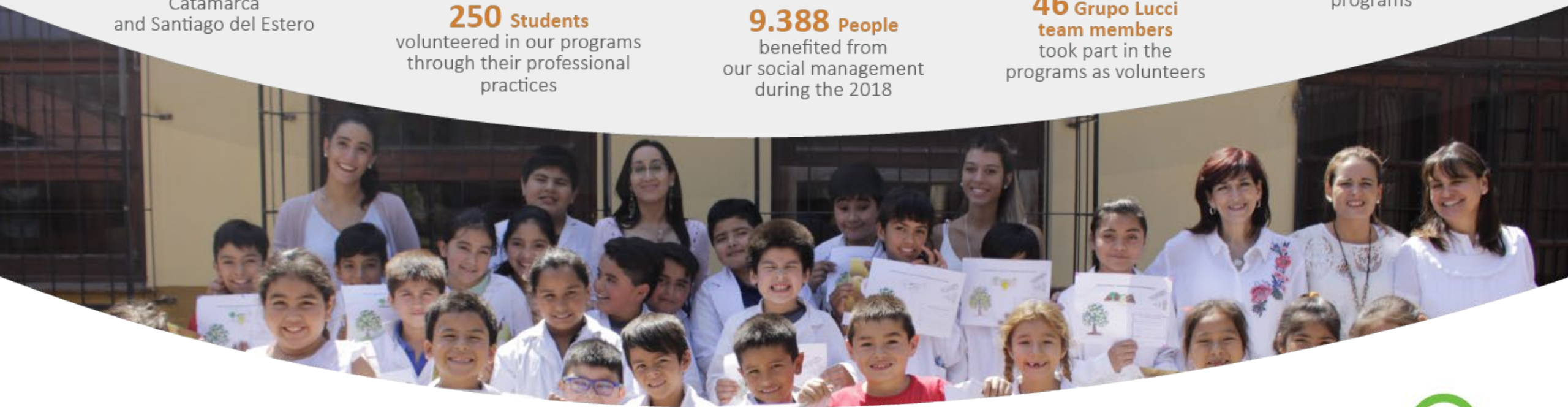
**9.388 People**  
benefited from  
our social management  
during the 2018



**46 Grupo Lucci  
team members**  
took part in the  
programs as volunteers



**268 Teachers**  
trained through our  
programs

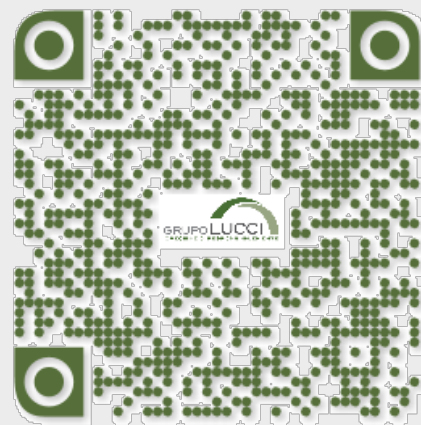




**CITRUSVIL**  
LEMON GROWING & PROCESSING

Thank you





Get Access to our Sustainability Report

[www.grupolucci.com.ar](http://www.grupolucci.com.ar)

