

---

---

---

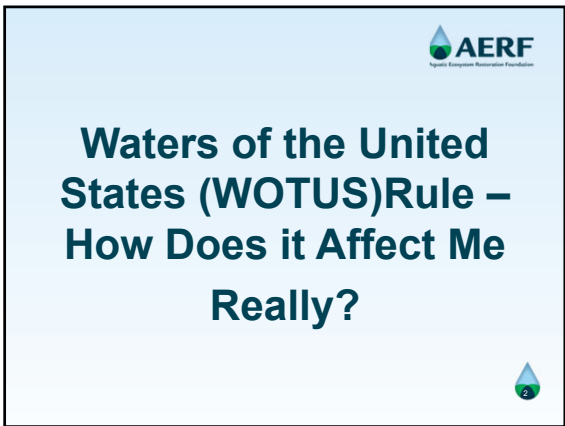
---

---

---

---

---



---

---

---

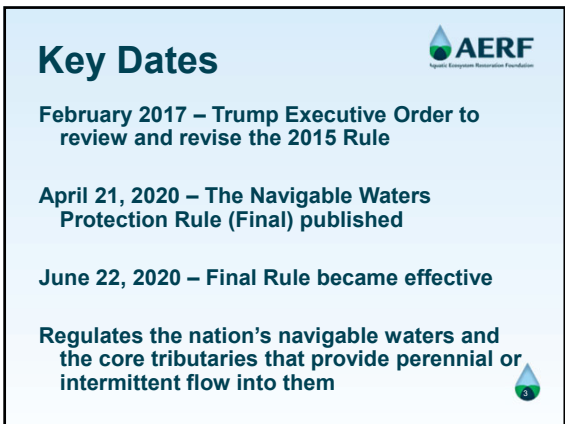
---

---

---

---

---



---

---

---

---

---

---

---

---

## What's it do?



- Clean Water Act explicitly directed the EPA and the Corps of Engineers to protect “navigable waters”;
- Streamlines the definition of jurisdictional waters to four categories;
- Provides clear exclusions; and
- Defines and clarifies terms previously undefined.



---

---

---

---

---

---

---

## What is jurisdictional?



The territorial seas and traditional navigable waters;

Perennial and intermittent tributaries to those waters;

Certain lakes, ponds, and impoundments; and

Wetlands adjacent to navigable waters.



---

---

---

---

---

---

---

## Why is this important to me?



**The rule establishes the jurisdiction of the National Pollution Discharge Elimination System (NPDES)**



---

---


---

---

---


---

---

**Who enforces NPDES?** 

- EPA in Massachusetts, New Hampshire, New Mexico, District of Columbia, U.S. territories, and on federal and tribal lands and
- States everywhere else are delegated the authority to enforce.

Southern states generally make their rules consistent with the federal rule.




---

---

---


---

---


---

---

---

**Why SCOTUS is important.** 

**Lawsuits**




---

---

---

---

---

---

---

---



[www.aquatics.org](http://www.aquatics.org)

 **AERF**  
Aquatic Ecosystem Restoration Foundation

**Carlton Layne**  
[Clayne@Aquatics.Org](mailto:Clayne@Aquatics.Org)  
678-773-1364

Restoration      Research      Regulatory

---

---

---

---

---

---

---

---