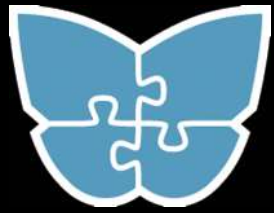


**What if Medicaid could pay for trees?**



**What if we prioritized greenspace for health?**

# An Oregon Action Framework for Health and the Outdoors



Institute for  
Sustainable Solutions  
INTEGRATING NATURE INTO OUR DESIGN

Oregon **Healthiest** State  
 Join The Movement



WILLAMETTE PARTNERSHIP



  
SOLID GROUND  
CONSULTING



**DOWNLOAD THE FRAMEWORK** at [oregon.healthandoutdoors.org](http://oregon.healthandoutdoors.org)

# Our Environment Culture of Health



**O'Dell, Columbia Gorge, OR**  
**But not everyone has the same access**

# Our Environment

## Culture of Health

### Portland garden warning

Oregon health officials cautioned residents not to eat backyard vegetables grown within a half mile of two Portland glass manufacturers after elevated levels of carcinogenic heavy metals were found nearby. The companies were Uroboros, near the Fremont Bridge in North Portland, and Bullseye Glass in Southeast.



**Bullseye Glass, SE Portland**  
**But not everyone has the same access**

# We can make the link between health and outdoors **explicit**



Closer, safer, cleaner greenspace increases physical activity



Time outdoors improves mental health



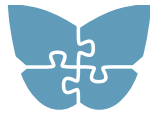
Planting trees strengthens social cohesion



Trees clean air

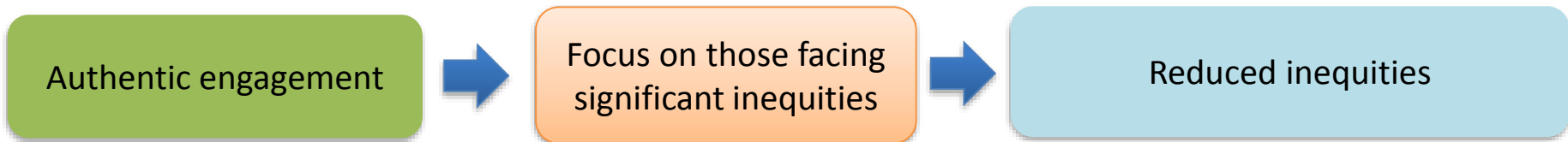
...But we know **there are inequities** in both health and access to the outdoors

Progress will depend on working partnerships between **champions for health and champions for the outdoors**

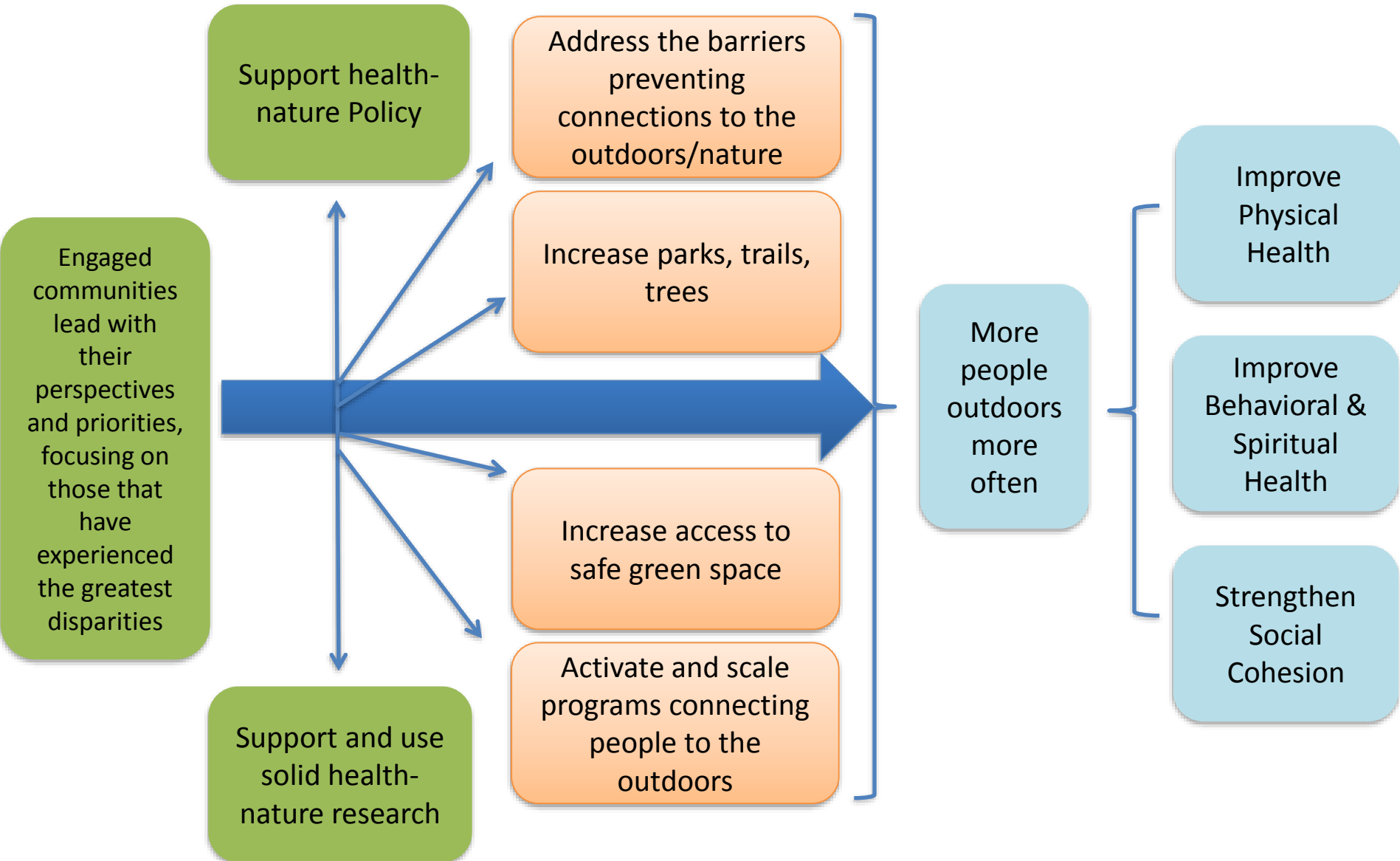


# Why do something now?

- Increased focus on community health and social determinants
- Green infrastructure addresses a lot of public challenges- climate change, stormwater, habitat
- There is significant institutional change occurring in healthcare delivery
- Conservation groups are taking equity and human well-being more seriously and need help with the “how”



Applying an equity lens throughout



# Ideas to Action: **Community-led efforts**

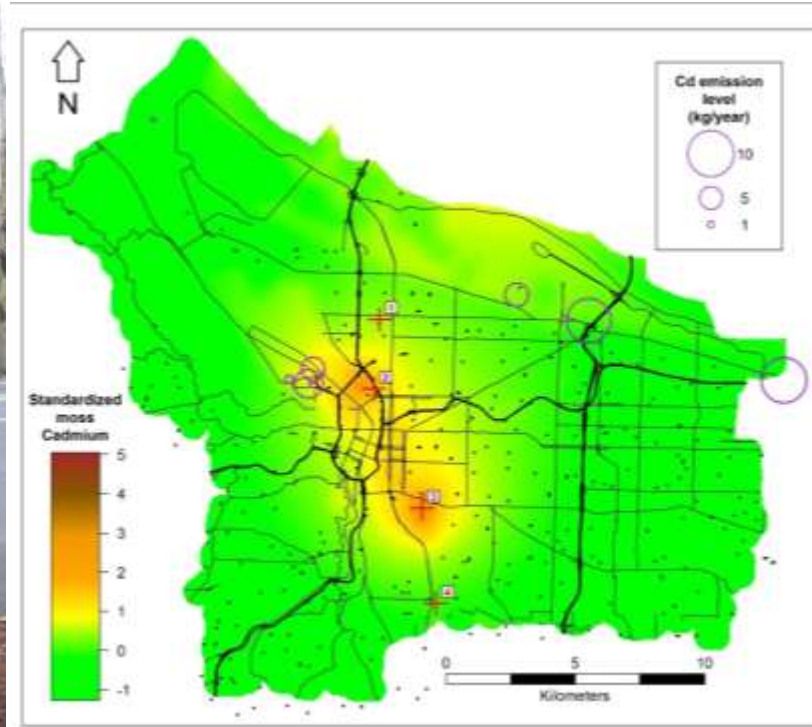
## **Four Pilots**

- Led by community health workers
- Measurement of health outcomes
- Financed by healthcare, outdoor recreation, foundations





# Ideas to Action: **Research**



- **New information = rapid changes**
- **Need for coordinated research agenda and funding**
  - **Dose/response, Different populations, Decision support**
  - **National Academies**
- **Building evidence so Medicaid can pay for trees**

# Ideas to Action: **Policy**

## **Focal Areas**

- Hospital community benefits
- Transportation
- ???



# Ideas to Action: **Communications**

- Health guide for outdoor educators
- Messages customized for different audiences for health and outdoors
- ???





Bobby Cochran

[cochran@willamettepartnership.org](mailto:cochran@willamettepartnership.org)

503-208-3448

<http://www.willamettepartnership.org>

