

# Facilitation of Innovation Through Technology

## Technology support so biologists don't have to!

## Project Management

Making sure projects run smoothly and deliverables come in on time can be challenging. Using Project Management can help your team be effective and efficient!

IPM Centers helps with

*Setting up Basecamp Project and Train Project Champion*

- Adding People
- Adding Initial project docs
- Adding Initial task lists, to-dos, and assignments

*Providing introduction, technical help, and suggestions for add-ins such as Google Drive*



## Webinars and Online Meetings

Connect with more people with less expense and time traveling to meetings!

IPM Centers helps with

- Setting up the call
- Acting as operator
- Hosting practice sessions
- Providing recordings



## Newsletters

Tired of managing your e-mail list? Interested in who reads what you send out?

Get effective reporting using newsletters!

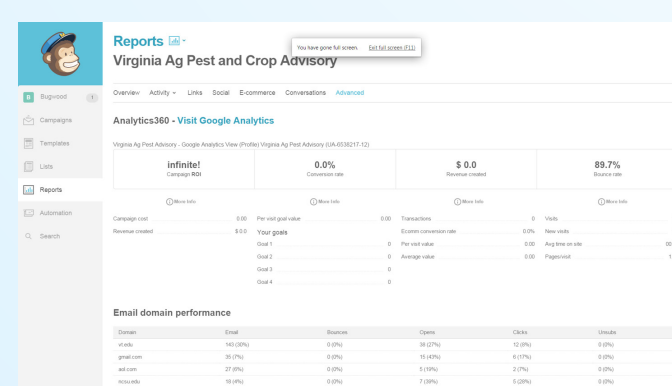
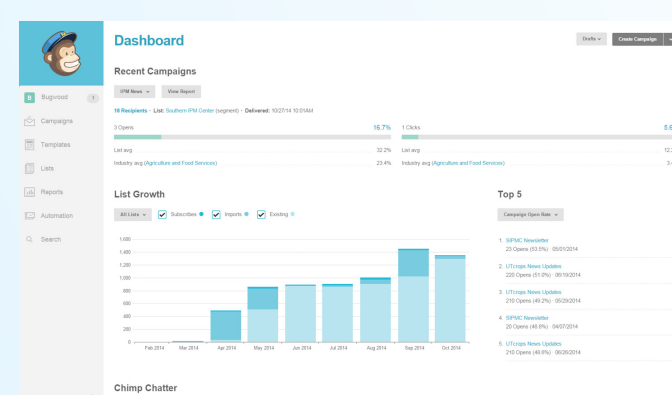
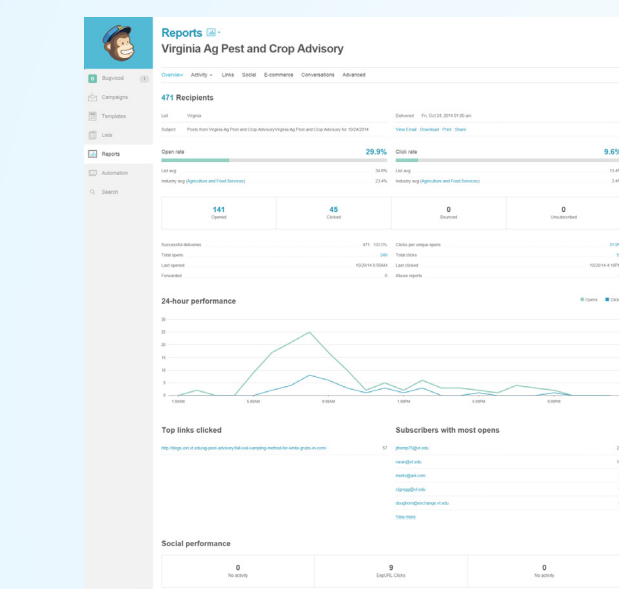
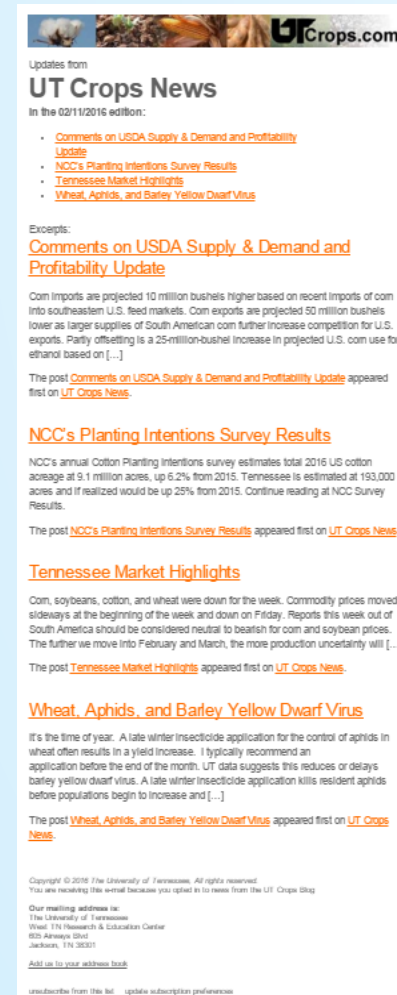
IPM Centers helps with

*Integrating existing news and blog sources*

*Structuring initial newsletter*

- Connection to Blog
- Setup of “Campaigns”
- Adding existing users and setup subscription opt-in

*Following up on statistics*



## Content Delivery

Need content? Want to share with others and publish and update your material quickly? We have more options for getting content out and getting what you need so you don't have to create from scratch!

Images

Presentations

Video

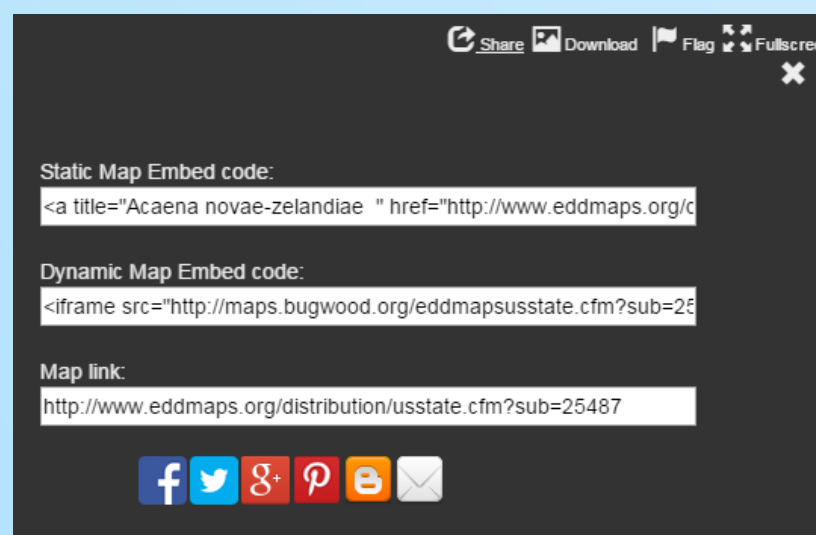
Occurrence Data

Other Resources

- Apps
- Factsheets/Publications
- Blogs and Newsletters

IPM Centers helps with

- Setting up projects
- Sourcing content and work for data entry
- Content retrieval and packaging
- Coordination with other groups working on similar content



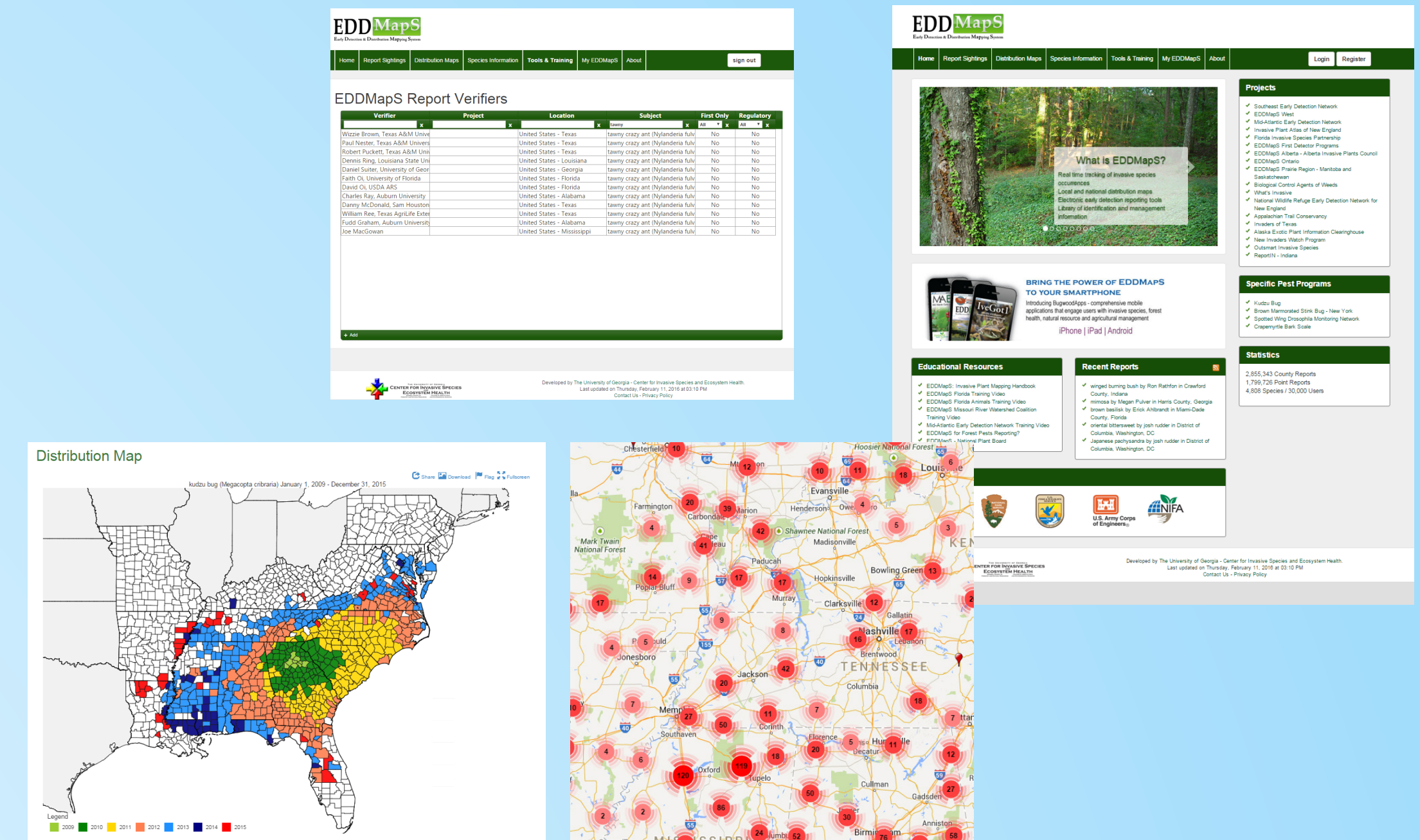
## Pest Data Management and Mapping

Coordinating pest data shouldn't be difficult. With the proper tools, it's possible to organize data with partners across organizations and provide real time visualizations.

IPM Centers helps with

- Adding species to Southeast Early Detection Network
  - Photos
  - Descriptions of pest
  - List of people to verify reports
- Adding verifiers to the EDDMapS Verification System
- Working with Bulk Data
- Data Aggregation & Real-Time Pest Mapping
  - Point Occurrence
  - County Occurrence
  - State Occurrence

*The maps can be embedded into **any website** to allow for a consistent, real-time flow of information to all partners wishing to display the information.*



## Starter Kit to Handling New Pest Outreach

It's not a matter of 'if' but 'when' new species will be introduced. Leverage established First Detector programs, volunteers, and technology to start awareness campaigns in days, not months.

IPM Centers helps with

- Setting up contact info and logos for working groups
- Recruiting images (Bugwood Images)
- Establishing a list of verifiers (EDDMapS)
- Gathering known occurrence data with reporter, dates, and location (EDDMapS)
- Distributing First Detector Presentations (Bugwood Presents)
- Creating Pest Alerts (North Central IPM Center)



David Cappaert, Michigan State University, Bugwood.org

## Additional services for Southern Region Smartphone App Development

Several smartphone apps have been developed by our partners at the Center for Invasive Species and Ecosystem Health. While many of the apps are for identification and/or reporting of species, creating other smartphone applications is possible.

*Examples of Templates*

- Field Guides
- Decision Support
- Pest Reporting



## Questions? Here's who to Contact:

Joe LaForest  
Co-Director  
laforest@uga.edu  
229.386.3298

Regional  
**IPM**  
Centers