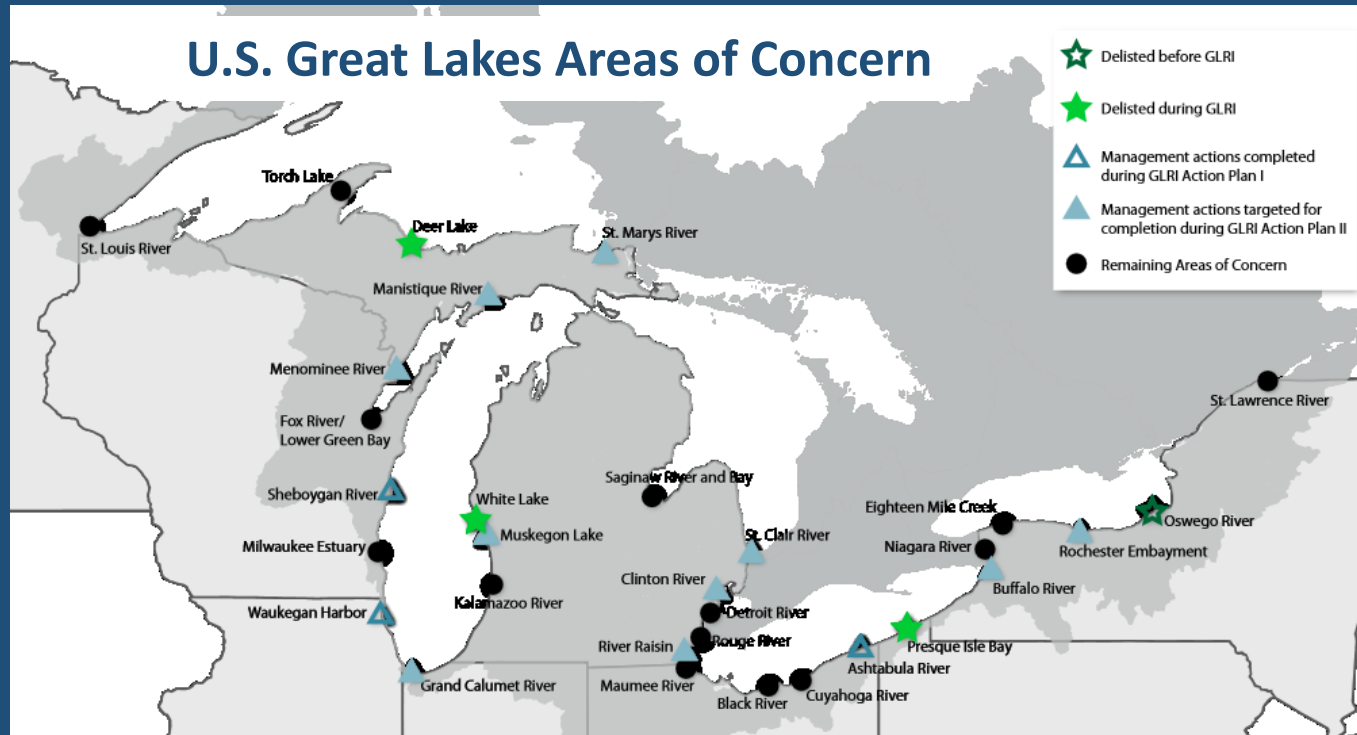


# Great Lakes Restoration Initiative

## Beneficial Use Impairment: *Restrictions on Fish and Wildlife Consumption*



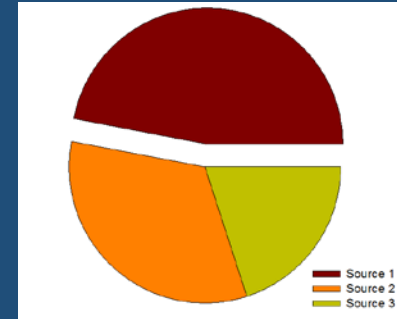
Hg

### Ohio Sport Fish Consumption Advisory

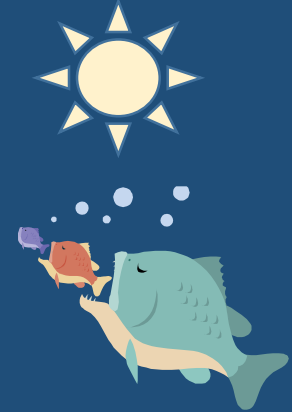
Ohio EPA Division of Surface Water  
February 2015



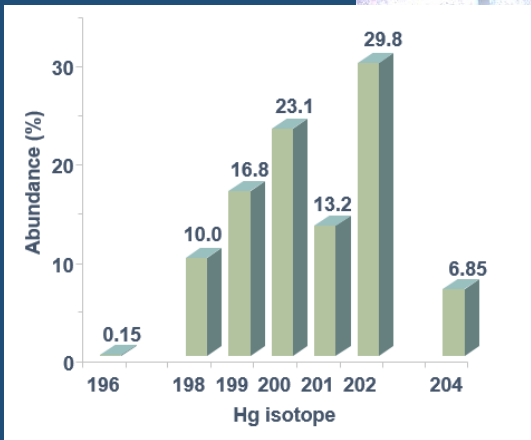
# High-Resolution *Natural* Mercury Isotope Measurements



Mercury Source Attribution



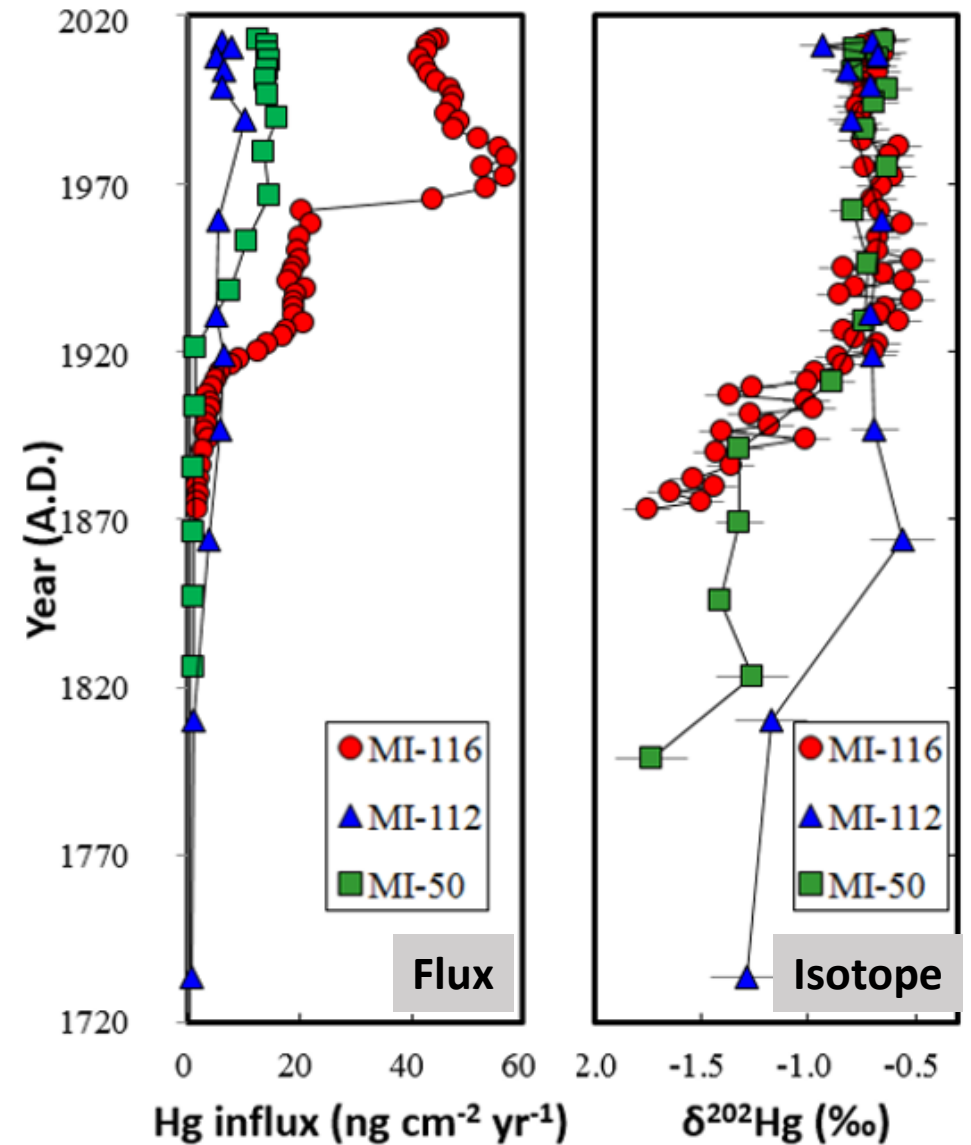
Mercury Processes



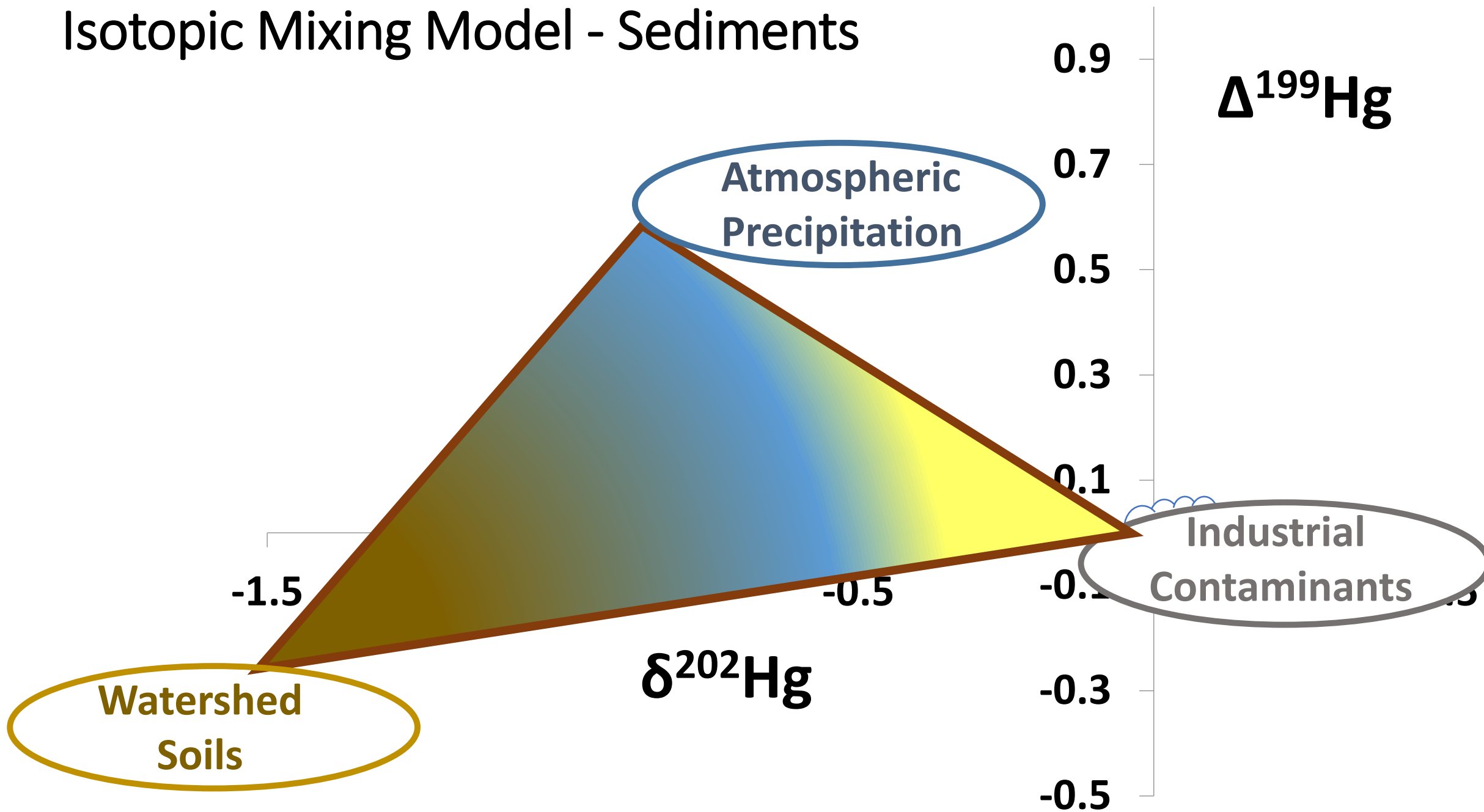
$\delta^{202}\text{Hg}$ ,  $\Delta^{199}\text{Hg}$ ,  
and  $\Delta^{200}\text{Hg}$



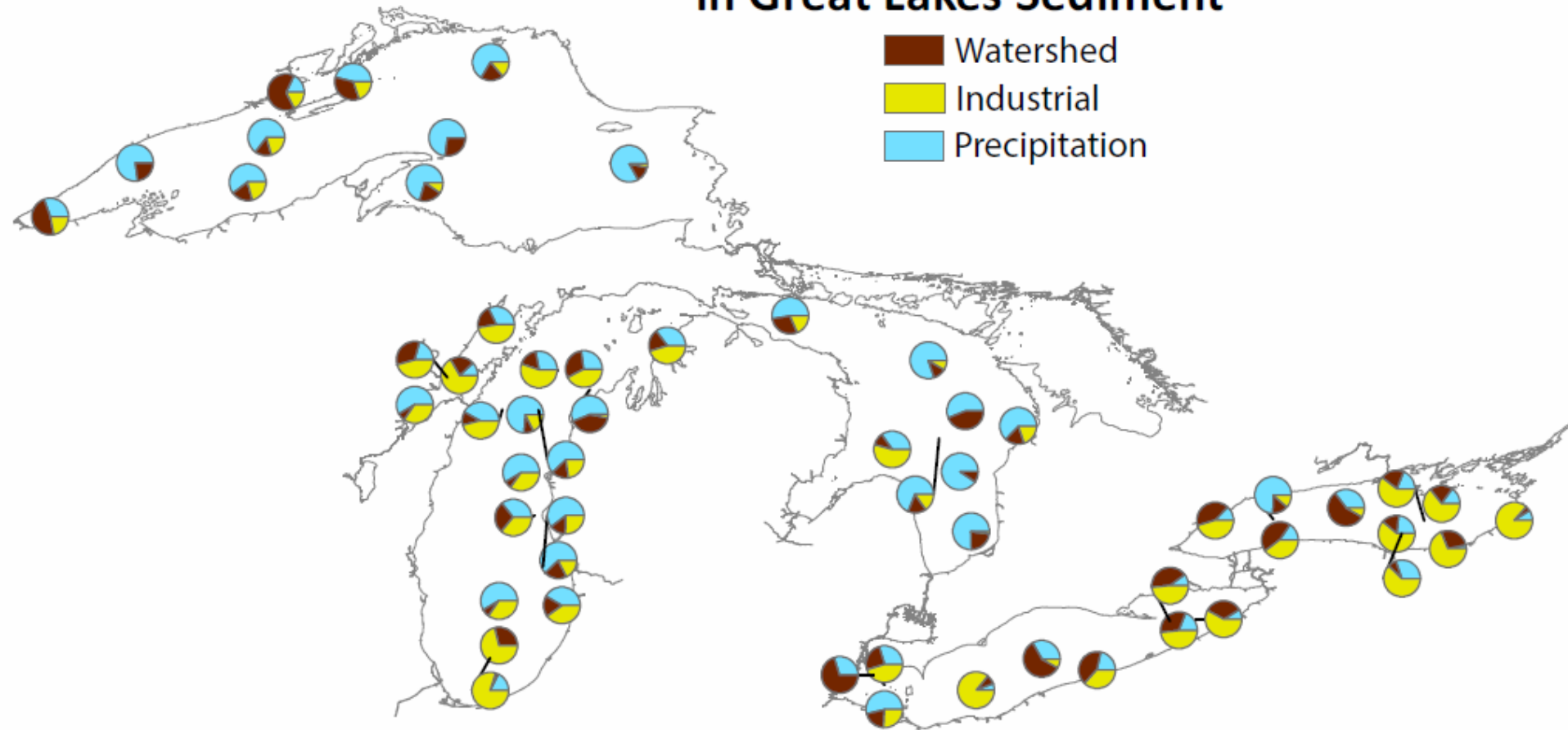
# Sediment Cores - Green Bay and Lake Michigan



# Isotopic Mixing Model - Sediments



# Source Contribution of Mercury in Great Lakes Sediment



Lake Superior



Lake Huron



Lake Michigan

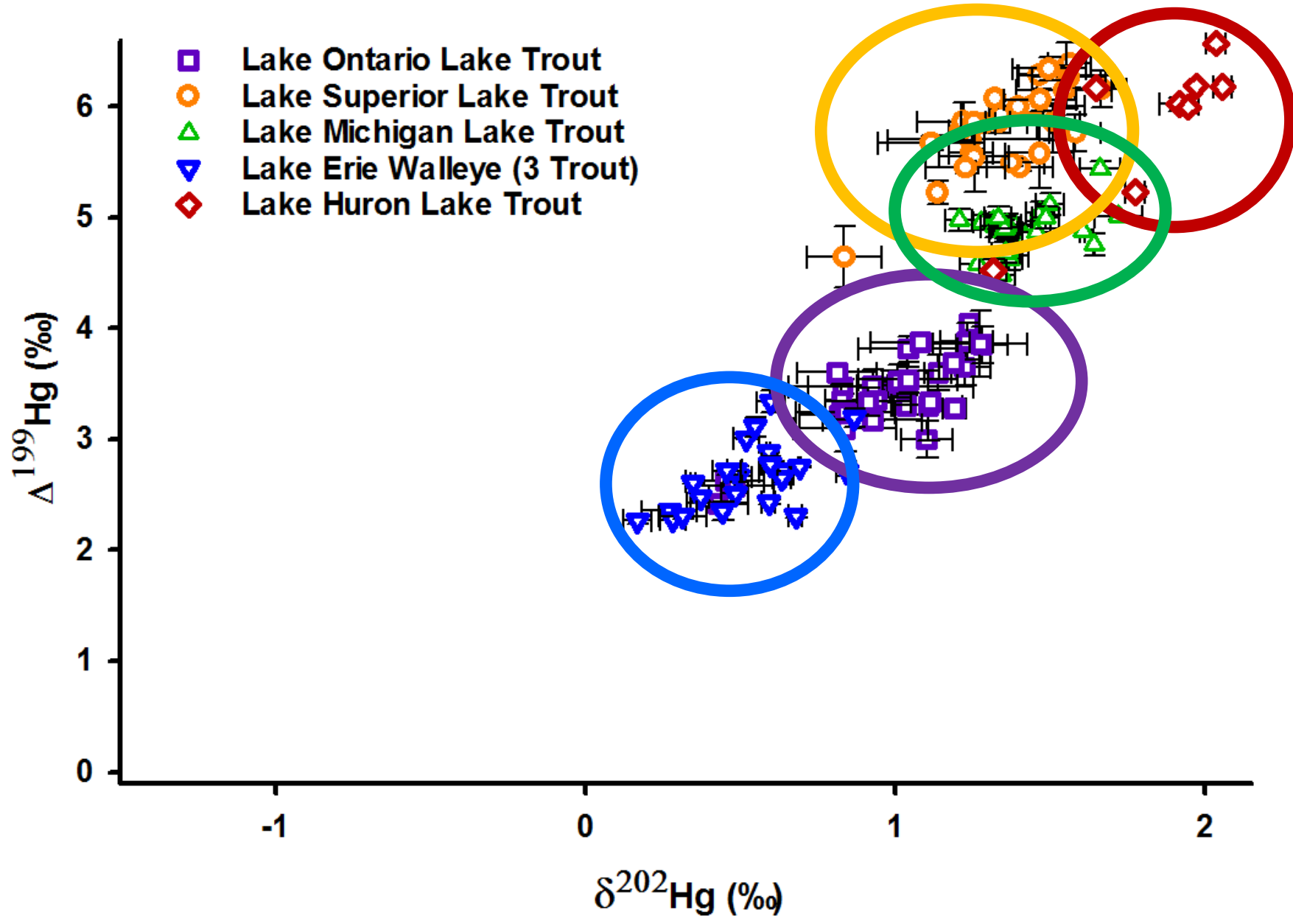


Lake Erie



Lake Ontario





*Specific  
Sources?*

**Atmospheric?**

**Watershed?**

**Contaminated  
sediments?**

