

Coastal Wetlands

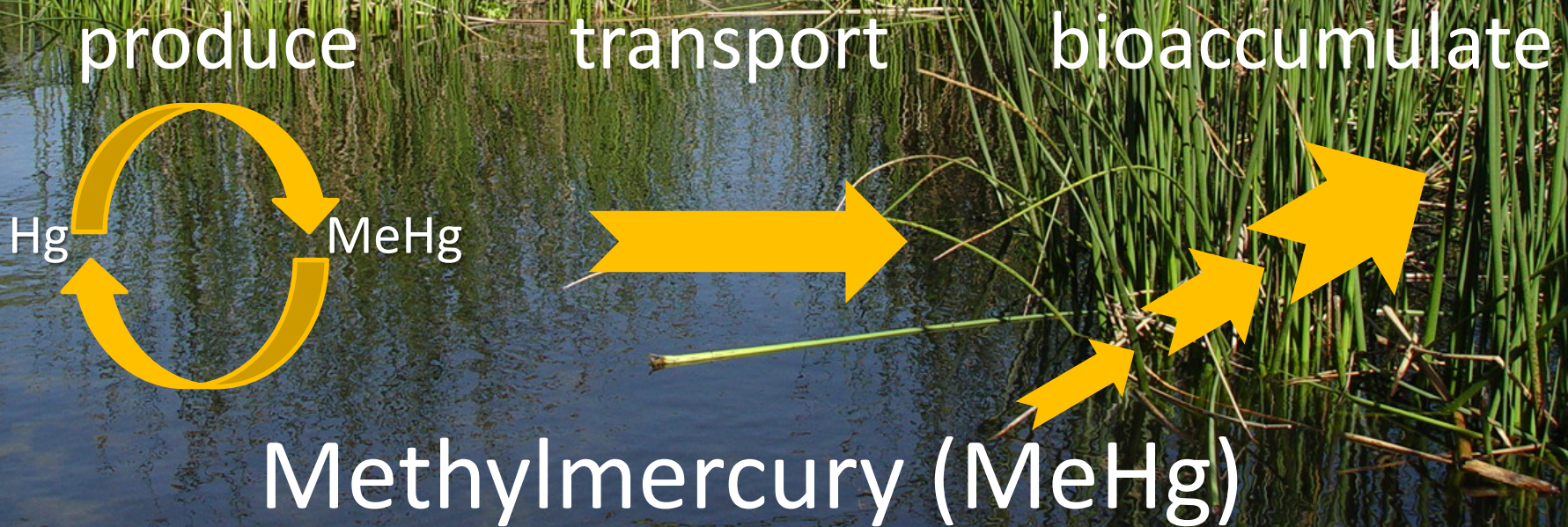


Mosquitoes

Methane

Methylmercury (MeHg)

Coastal Wetlands



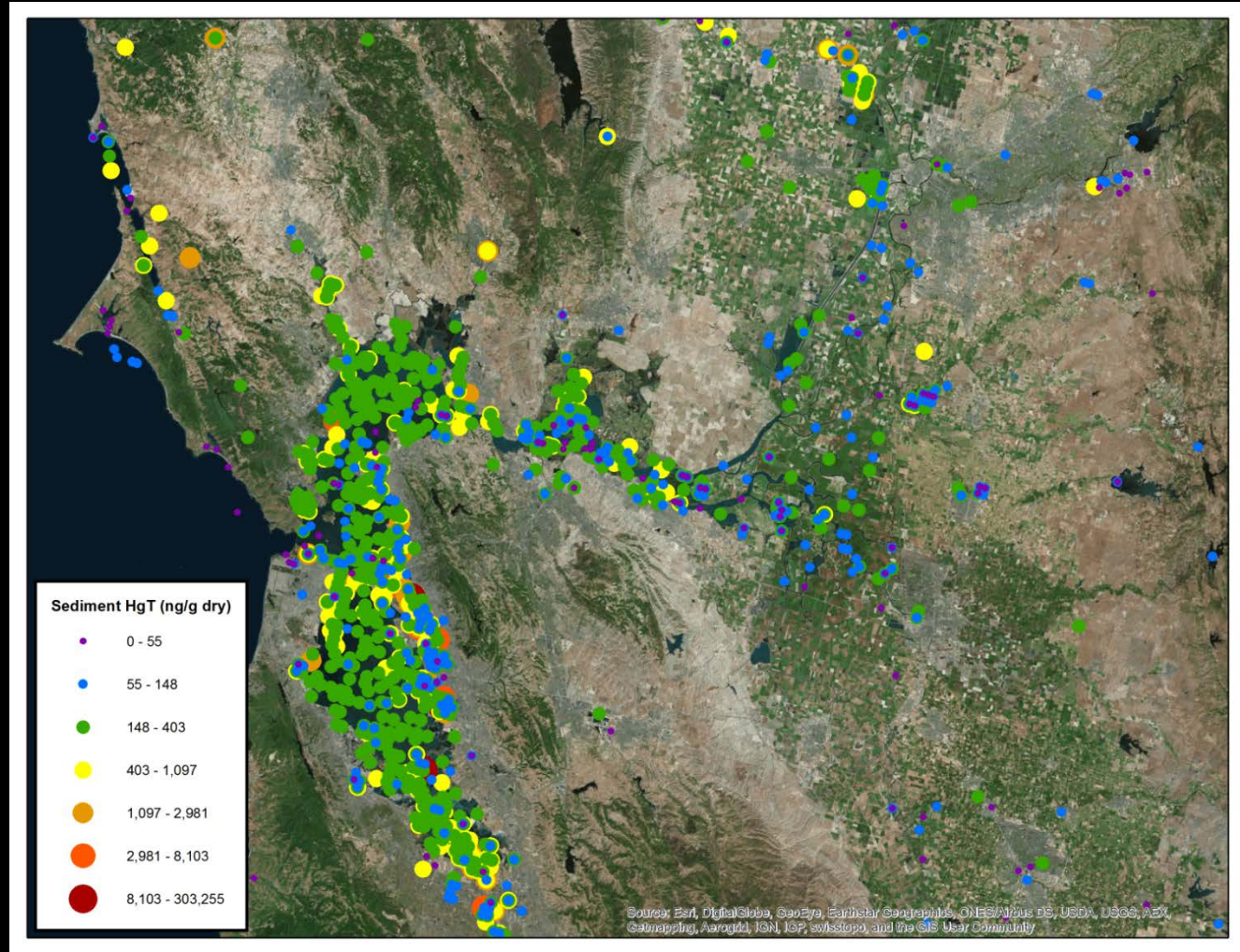
79% of US coast has fish Hg advisories.

2011



San Francisco Bay Delta and Watershed

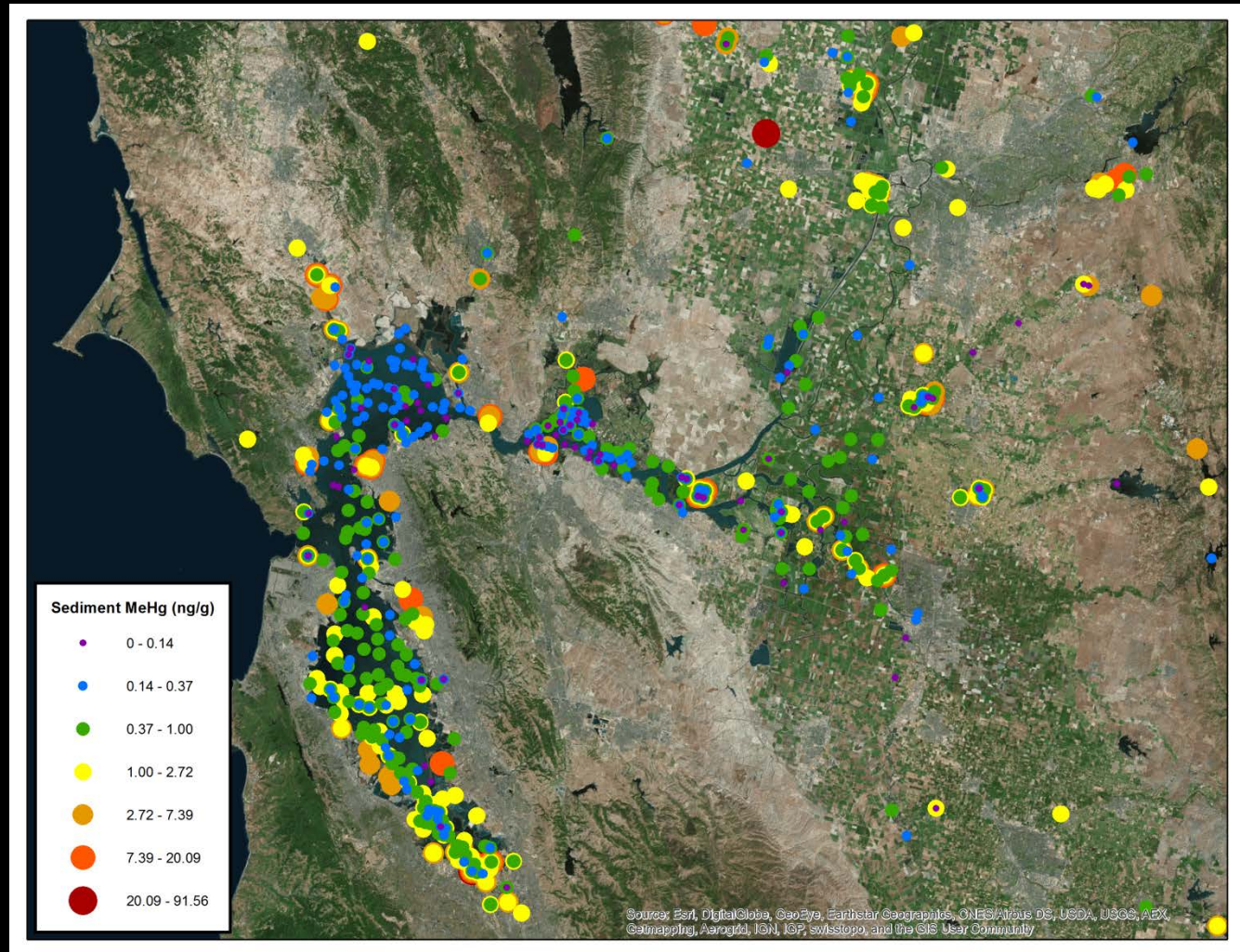
Total Hg in surface sediment



Data from Western North America Mercury Synthesis (Fleck et al.)

San Francisco Bay Delta and Watershed

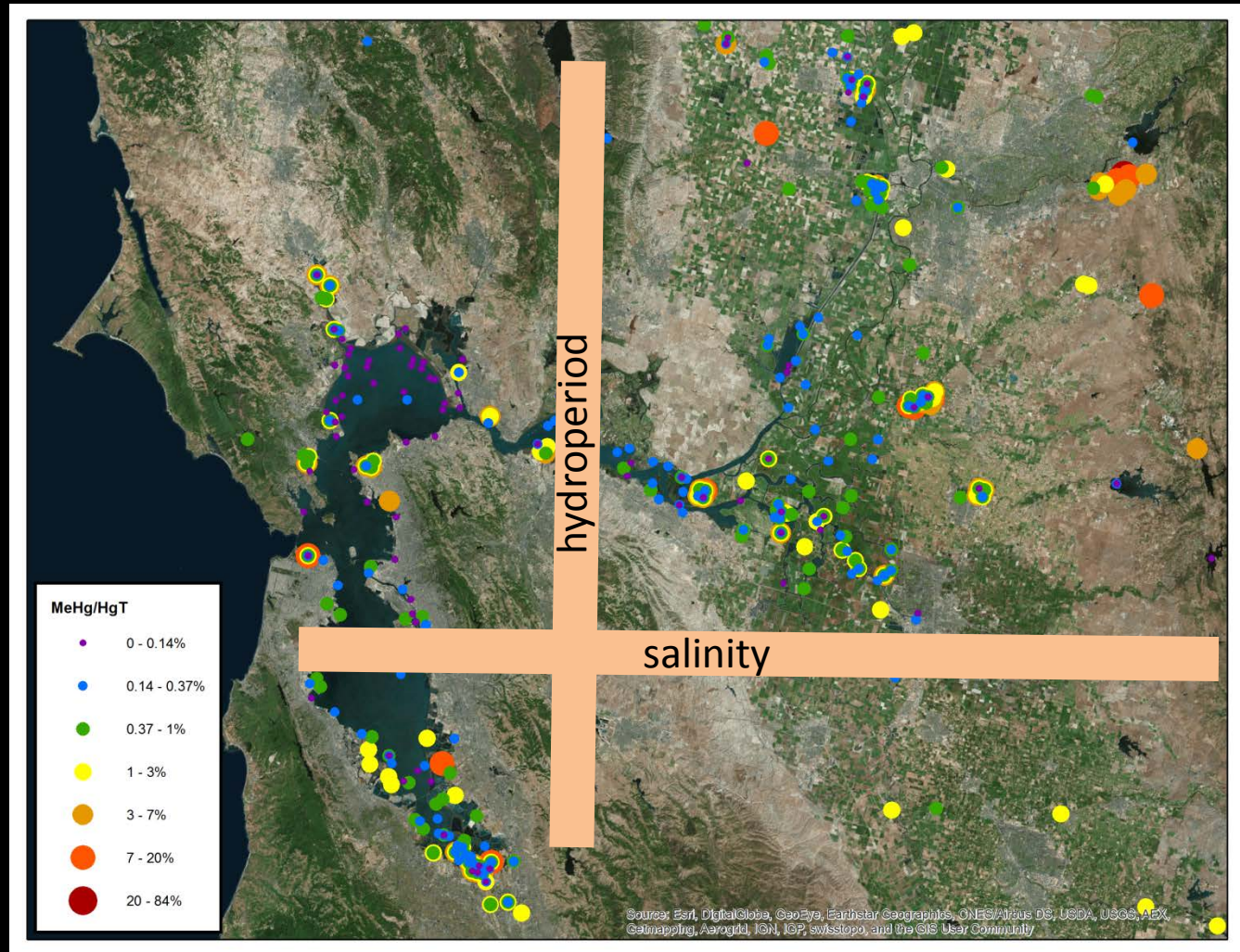
MeHg in surface sediment



Data from Western North America Mercury Synthesis (Fleck et al.)

San Francisco Bay Delta and Watershed

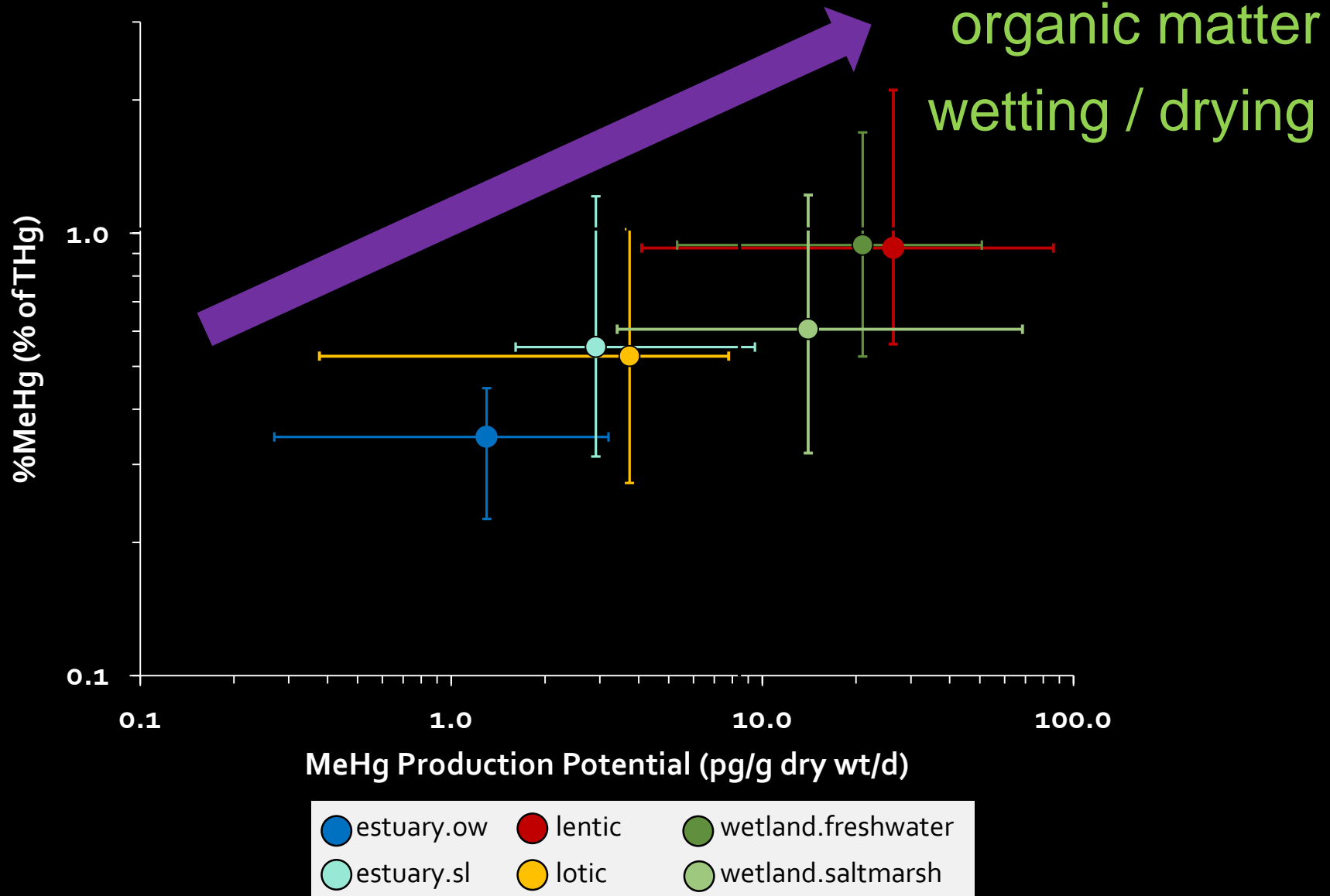
%MeHg of Hg in surface sediment



Data from Western North America Mercury Synthesis (Fleck et al.)

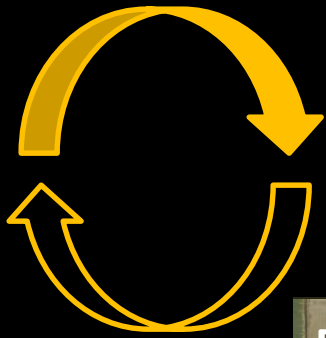
San Francisco Bay Delta and Watershed

Methylmercury production is high in wetlands.



Cosumnes River Preserve, CA Delta

Reduce MeHg production by reducing organic matter



Rice Agriculture

An aerial photograph of a rice paddy field with various sampling points marked. The points are labeled B-7, B-13, B-14, B-19, B-21, C-4, C-6, C-9, and C-10. Some points are highlighted with yellow circles. The map includes labels for 'Rice Gate', 'Farm House', 'Pump F6', 'Pump F2', 'Pump F1', 'Rice Slough', and 'Road Blocked'. A small inset image shows a fish, likely a rice field fish.

Standard



Tilled



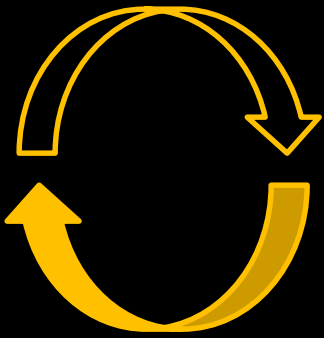
Baled



Cosumnes River Preserve, CA Delta



Increase MeHg removal via settling and sunlight

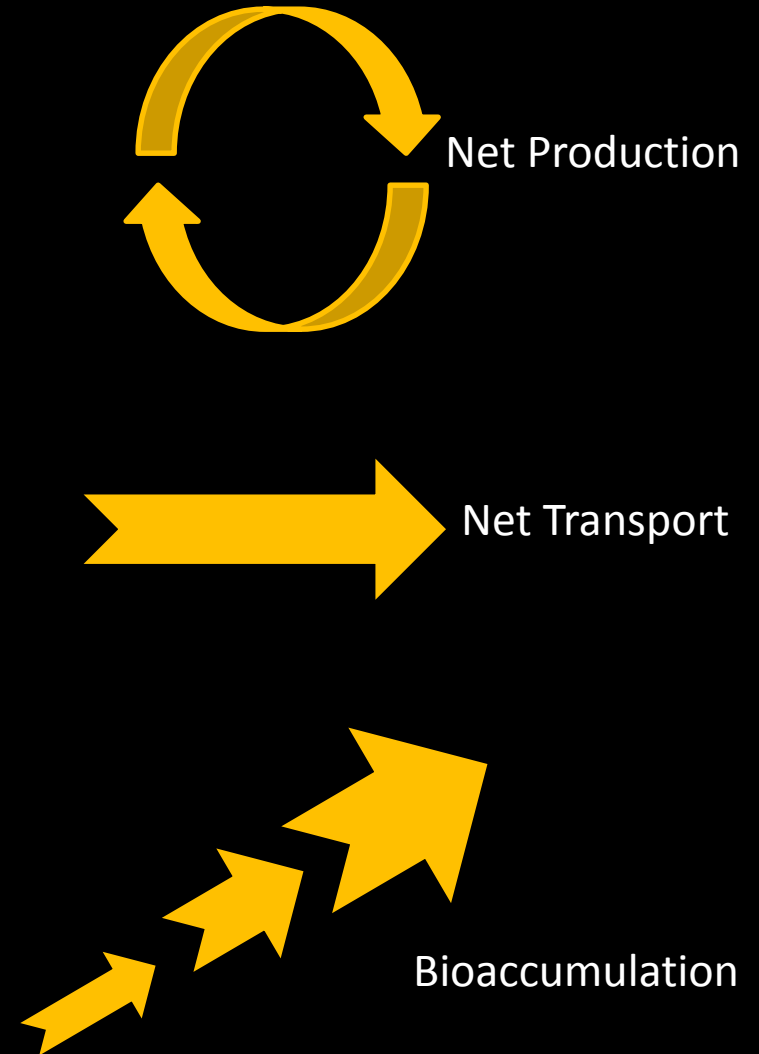
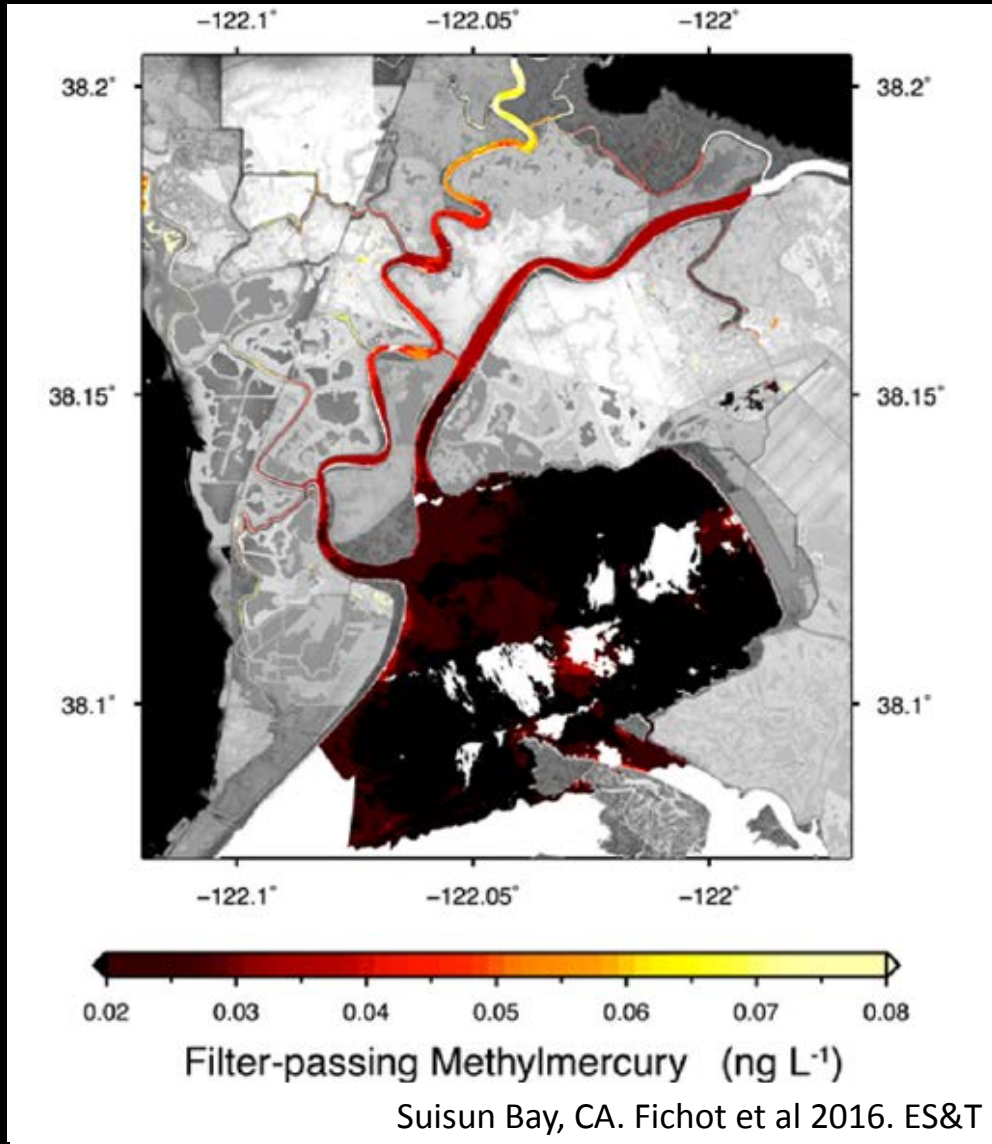


Seasonal Wetlands



Reducing MeHg Exposure: the next phase

Monitoring AND Mitigating



Thank you.

FISH SMART[™] in San Francisco Bay

Harmful chemicals like mercury and PCBs are in some fish in San Francisco Bay. **Women 18 - 45 years old and children should only eat the fish with less chemicals in them.**

有害化学物质诸如汞、多氯联苯等存在于三藩市海的某些鱼体内。妇女18-45岁和儿童应当只吃化学物质含量少的鱼。

Algunos tipos de pescado de la Bahía de San Francisco contienen químicos dañinos como mercurio y PCBs. Las mujeres de 18 a 45 años y los niños solo deben comer el pescado que contiene menos químicos.

Learn more: www.sfwaterfish.org | 774-633-2179

EAT THIS Less Chemicals	NOT THIS More Chemicals
	

