

Restoration by Design: The USACE Regional Sediment Management Program

Presented to:
National Conference on Ecosystem Restoration

By: USACE Jacksonville District
RSM Center of Expertise



®

USACE PROJECT MAP



2013 RSM VALUE TO THE NATION (Jacksonville)

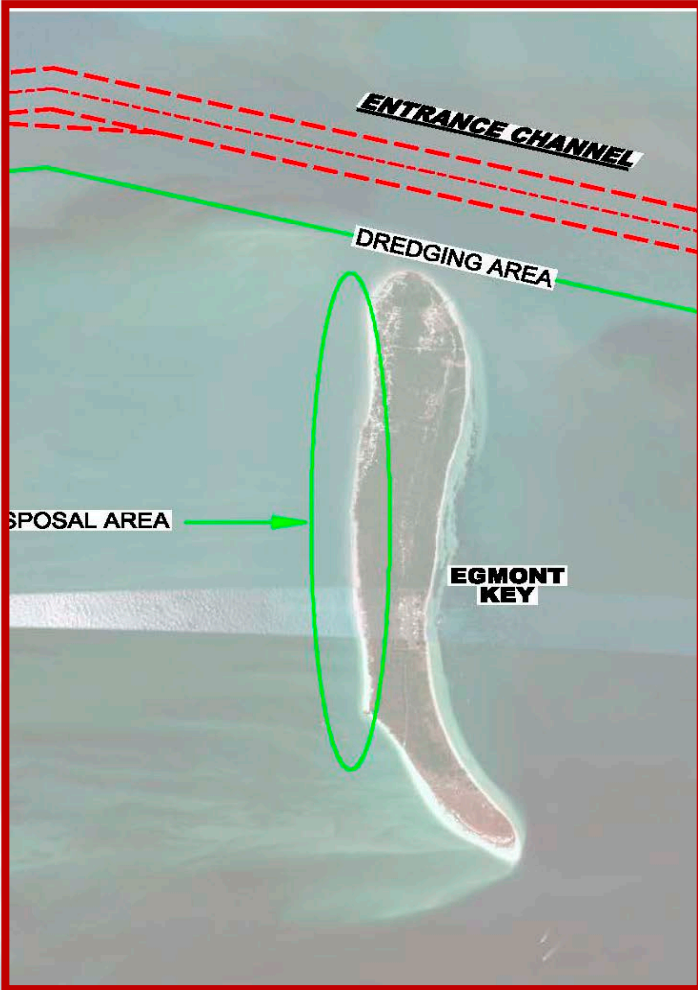
FY13 NAVIGATION RSM	TOTAL COST (NAV)	PLACEMENT	BEACH VOLUME**	ROUGH VALUE TO FRM***
Port Everglades* (partial)	\$ 1,898,489	Broward SPP	96,126	\$5,959,812
Palm Beach Harbor	\$ 4,870,074	Palm Beach Co NF	420,000	\$6,300,000
Ft Pierce Inlet	\$ 3,299,090	Fort Pierce SPP	191,000	\$2,330,200
St Lucie Inlet	\$ 6,465,600	Martin Co. SPP	200,000	\$3,000,000
St Augustine Inlet	\$ 1,932,600	St Johns SPP	116,000	\$696,000
Ponce Inlet (SAW)	\$ 1,000,000	Volusia Co. (NS)	141,000	\$2,115,000
AIWW-Jupiter Inlet	\$ 2,601,207	Palm Beach Co	55,000	\$825,000
AIWW-Haulover Inlet		Dade Co. SPP	120,000	\$6,180,000
	\$ 22,067,060			\$27,406,012
King's Bay EC (NAVY)	\$ 8,030,480	Nassau Co SPP	121,046	\$ 1,361,768

INCREASED VALUE TO NATION

* Includes \$1.2M NF (MOA)
 ** Includes 15% placement losses
 *** Contract costs only, additional FRM value for E&D/S&A not included



RSM: Tampa and Fate of Fines Pilot

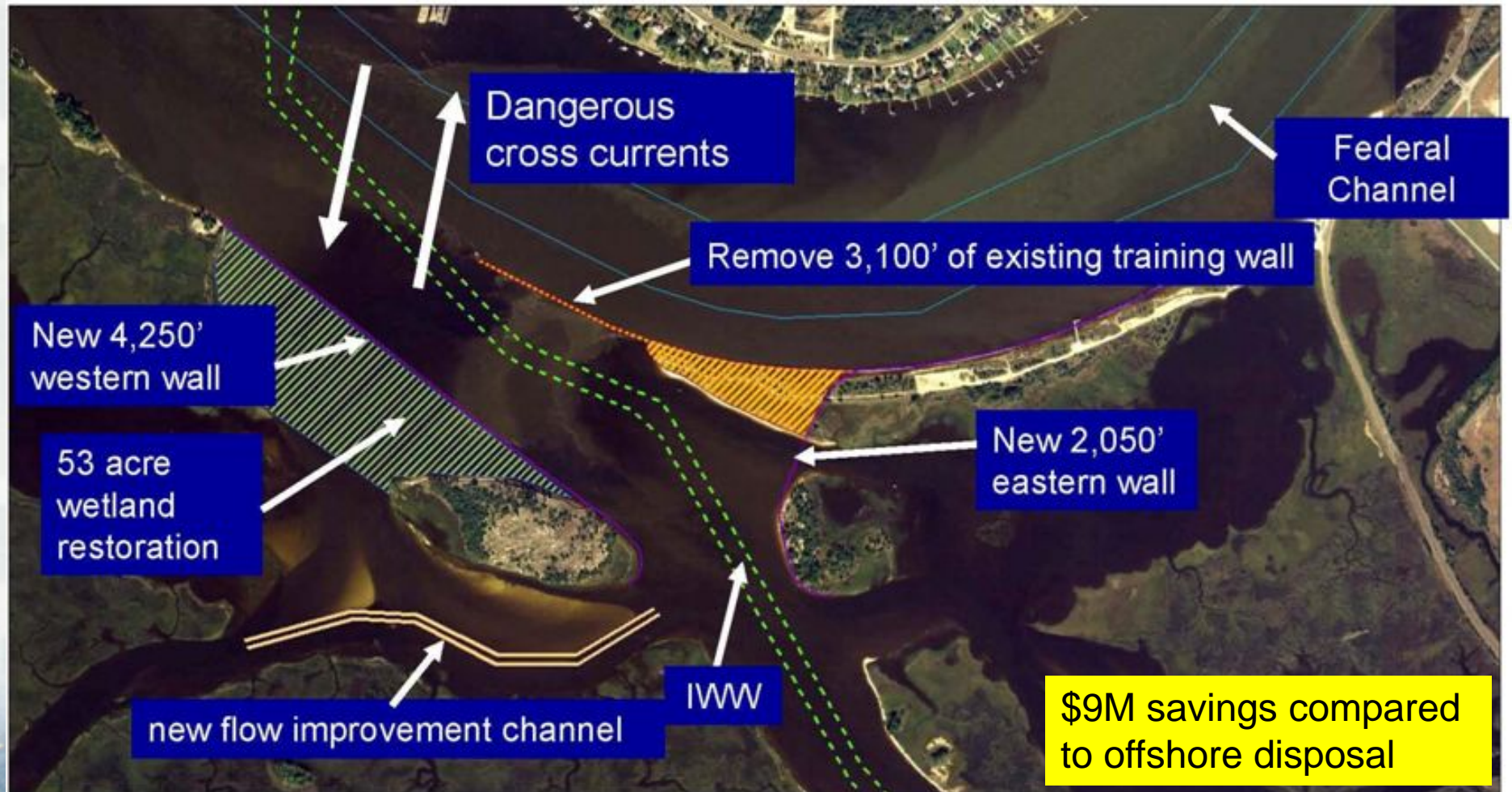


Savings: \$8M + Habitat + Erosion Mitigation



BUILDING STRONG®

RSM: Not just sand on the beach!



Jax Harbor, Milepoint



U.S. Army Corps of Engineers
Jacksonville District



New Jersey Intracoastal Waterway



Questions?

Aubree Hershorin, Ph.D.
Planning and Policy Division
Jacksonville District
U.S. Army Corps of Engineers
Aubree.G.Hershorin@usace.army.mil
Phone: (904) 232-2136



BUILDING STRONG®