

BLUF

- ❖ Southern California is committed to maximizing the use of its local water resources.
- ❖ Southern California is making great strides in water conservation planning and implementation.

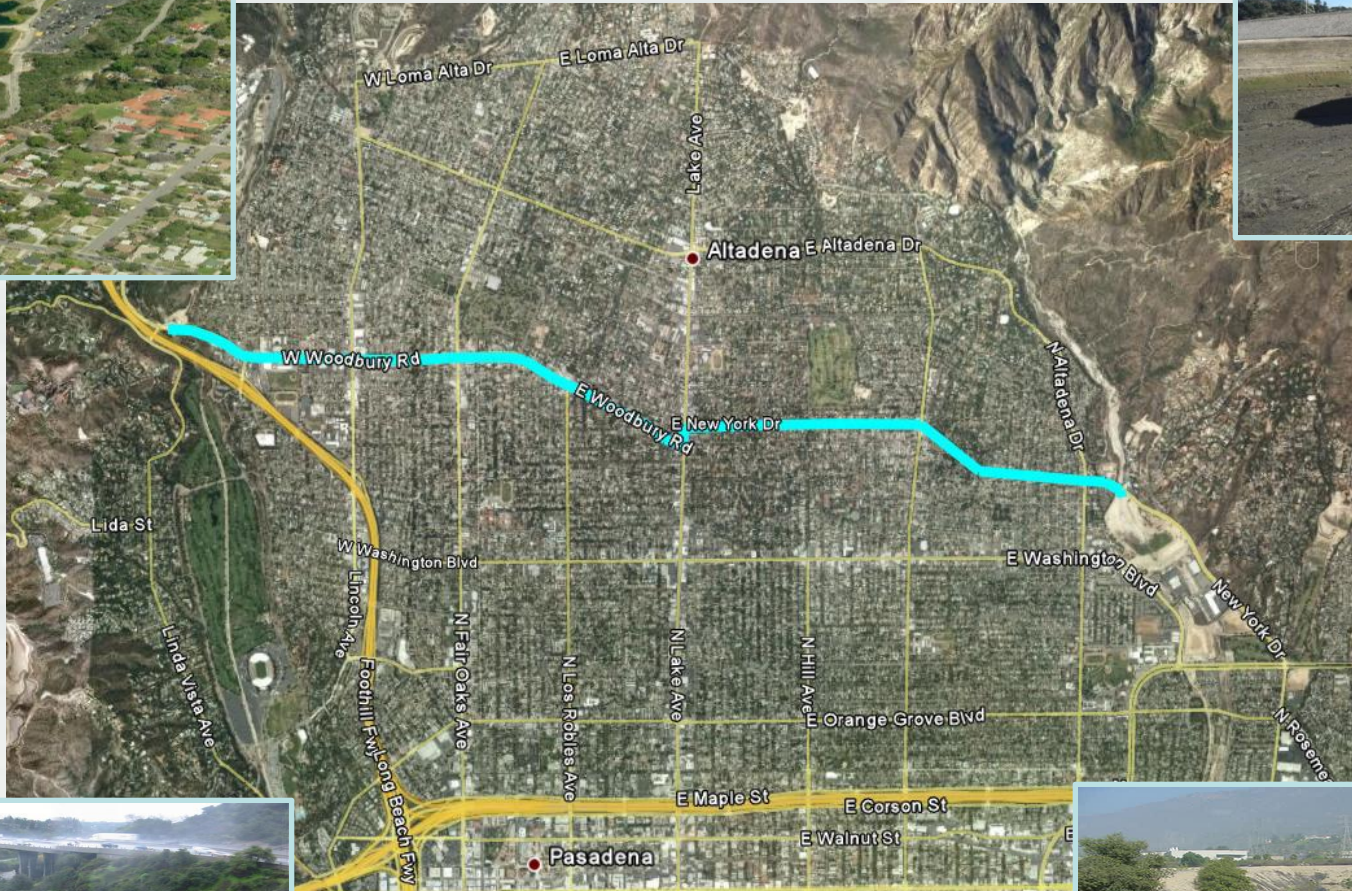


- ❖ The Los Angeles District U.S. Army Corps of Engineers is partnering with many stakeholders.



Foothill Water Coalition

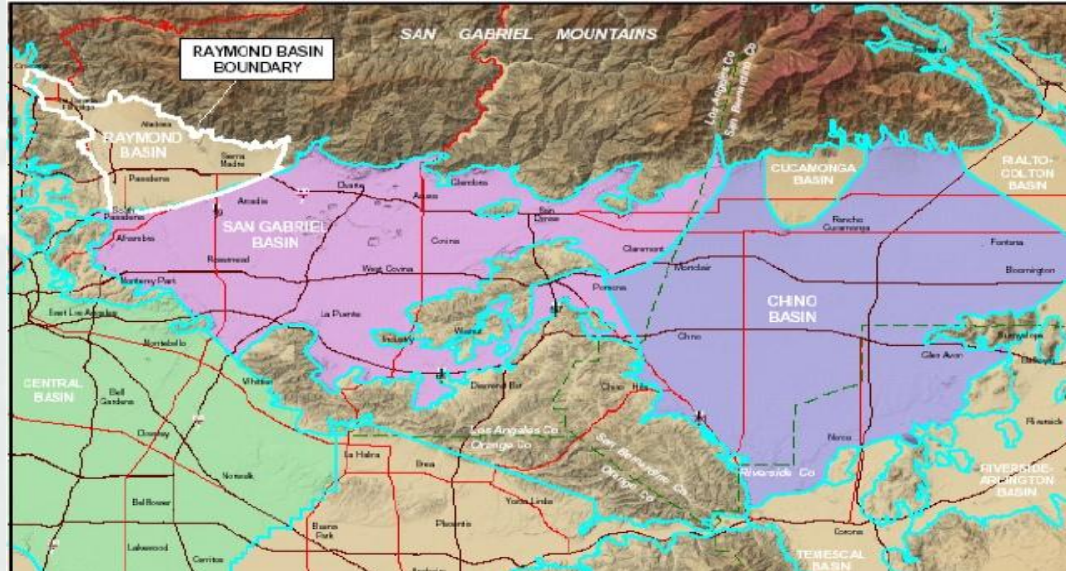
Water Supply Reliability Program



Foothill Water Coalition

Water Supply Reliability Program

- ❖ Innovative, regional, cost effective solutions
- ❖ Enhanced capacity and operational flexibility
- ❖ Potential collectively for generating 19,030 AFY
- ❖ Significant energy savings



Key Regional Stakeholders

Collaborating and Leaning Forward

- U.S. Army Corps of Engineers
- U.S. Bureau of Reclamation
- Los Angeles County Flood Control District
- Los Angeles County Sanitation District
- City of Arcadia
- City of Azusa
- City of Glendale
- City of Irwindale
- City of Pasadena
- Foothill Municipal Water District
- Main San Gabriel Basin Watermaster
- Raymond Basin Management Board
- San Gabriel Valley Municipal Water District
- Three Valleys Municipal Water District
- Upper San Gabriel Valley Municipal Water District



Water Independence Now

Water Replenishment District



- Goal to eliminate 26,000 AFY of imported water.
- Emphasis on increasing stormwater and recycled water use through groundwater recharge and seawater intrusion prevention.



Water Independence Now

Whittier Narrows Conservation Pool

Increased Conservation Pool – 1,100 AF of new water each year



Water Independence Now

Groundwater Reliability Improvement Program

- ❖ Increase local water supply sustainability
- ❖ Install water recycling infrastructure
- ❖ Reclaim and recharge about 21,000 AFY

