



Non-native horses and burros in the Southwest

Tolani Francisco DVM, MPH

USDA Forest Southwest Regional Office

Wild Horse and Burro Coordinator



Photo of Pueblo of Laguna



- Must be on or associated with a BLM Herd Management Area or FS Territory
 - 177 BLM
 - 53 FS
- Protections come under PL 92-195 (The Free-Roaming Wild Horse and Burro Act of 1971)
 - Does not apply to tribal lands
 - No Genetic test to determine
- Wild Horse is a proper noun, wild horse is as description of behavior

What is a Wild Horse?

- Where are wild horses an issue?
- Tribal lands
 - BIA classifies as an Invasive Species
 - Public lands not covered by the Act
 - State lands
 - Private lands



Horses grazing along a riverbank

Where is the issue?

574 Federally Recognized tribes in US/236 Federally recognized Reservations



Tribal Lands in the US-lower 48

Map showing all tribal lands and US Forest Service lands

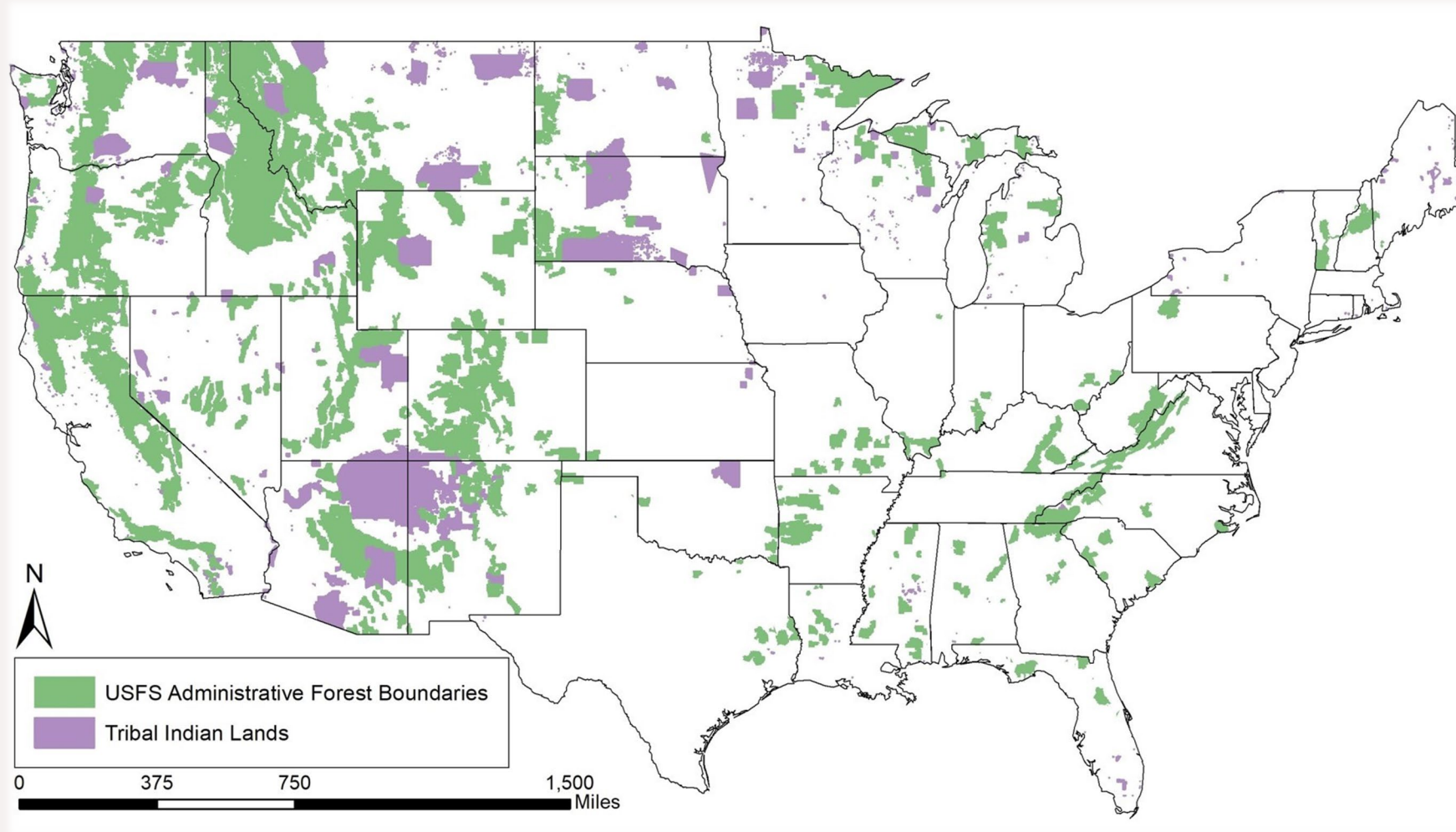




Photo of Big Mouth Bass

Fish and aquatics
 Big Mouth Bass
 Mosquito fish, crayfish,
 Many others



Photos of Starling and Horse

Birds and Other animals
 House Sparrow
 European Starlings
 Horses and burros
(depending on where they are located: BIA classifies as an IA)



Photo of YB Grass

Plants
 Yellow Bluestem grass
 Kudzu vine, Russian Olive,
 Salt Cedar, etc.

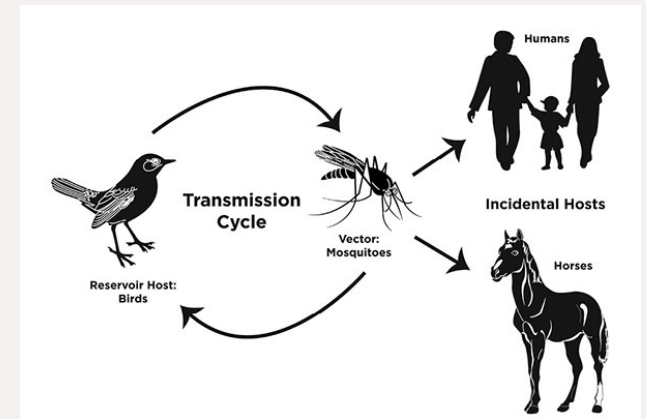


Photo of WNV cycle

Many things we cannot see
 Viruses, Bacteria,
 Parasites, etc.

What is an invasive species?

Examples of effects from invasive species

Many of the invasive species have effects not immediately thought of, such as:

- Bacteria causing ill health ie. *Mycoplasma* sp.
- Spring Viremia of Carp, Herpes Virus
- Spread of plant species by fecal deposits
 - Artificial feeding of animals with contaminated feed
- Competition with native species not just biological but also Geopolitical issues
 - Wild Horses vs wild acting horses
 - Crayfish harvesting
 - FMD introduction-economic devastation
- So many others





Photo Salt Creek 1994



Photo Salt Creek 2004

- 1995, approx. 1995 horses removed
- 2004 TNC recovery report
 - Alakli Sacaton/Saltbrush
 - 14% cover up to 30% cover in areas near water
 - Inland Saltgrass
 - 34% cover to 52% cover in areas near water
 - Many new invasive grasses
 - Oryx utilization
- Unpublished: stream beds increased in horse trails > increased Pup Fish, now increased mosquito fish feeding on pup fish

White Sands Missile Range example



19 Pueblo Tribes in NM

Laguna (largest in land mass and population)

Speak Keres language with 6 other Pueblos

Horse = Cavallo (Caballo)

Alligator = wock wock (Laguna is not written traditionally)

Horses can be a vector for many other invasive species such as ticks, grass seed, viruses and bacteria which can be zoonotic

Tribal example from Laguna Pueblo



What can we do?

Working across all professions is a great start

Some Resources:

<https://www.invasivespeciesinfo.gov/terrestrial/vertebrates>

<https://www.bia.gov/service/competitive-fisheries-wildlife-recreation-programs/invasive-species>

Thank you

Tolani Francisco DVM MPH
Tolani.Francisco@usda.gov

