

# Palmer Point Park: A Wetland Restoration...

By

Jimmy Sellers, Coastal Management Specialist  
*Wetland Assessment, Regulation & Mitigation Session*  
INTECOL 9 - Orlando, FL  
June 7, 2012



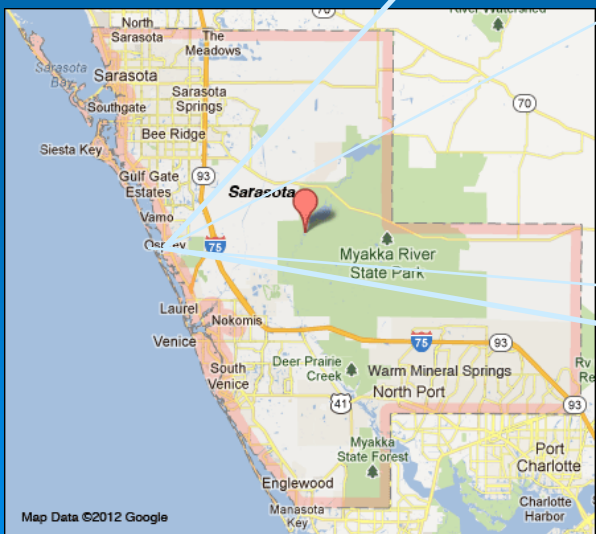
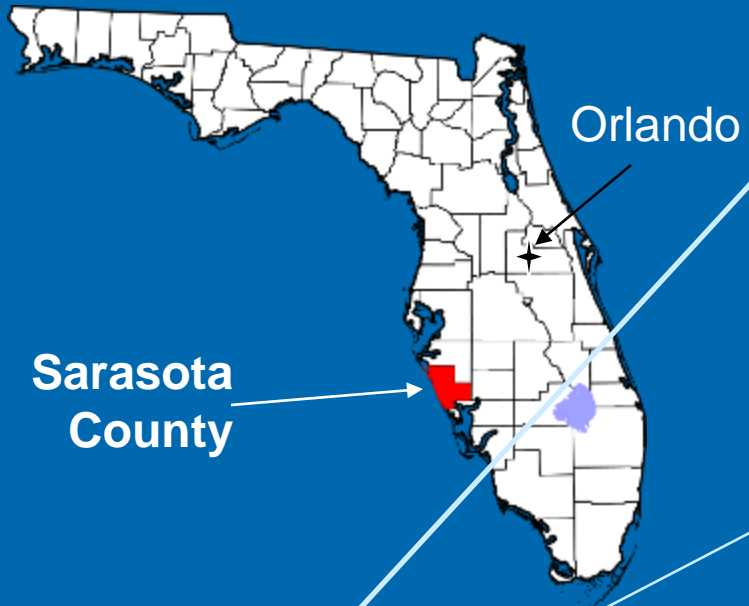
# Co-Authors

- **Curtis Smith, P.G.**
  - **Sarasota County Project Manager**
  
- **Jenna Vogt-Phillips, M.S.**
  - **Coastal Tech Project Engineer**

# Outline

- I. Location**
- II. History**
- III. USACE Role**
- IV. Project Funding**
- V. Pre-Project Site Conditions**
- VI. Design & Permitting**
  - **Conceptual Designs**
  - **Construction Access**
  - **Minimization Measures**
- VII. Construction**

# Location



# History

## ➤ ICWW Construction

- 1960-1967
- 152 miles long X 100 feet wide X 9 feet deep
- Hydraulic dredging – Spoil Disposal
- Pinellas County south to Lee County

## ➤ Midnight Pass

- Started a northern migration in 1969
- Closed in 1983 by human intervention

# History



# USACE Role

- **Sarasota Bay designated a priority water body by US EPA**
  - 40% of historical intertidal wetlands lost
  - Portion of the loss due to ICWW
  
- **1135 Report for Sarasota Bay**
  - “...improving the quality of the environment in the public interest.”
  - Targeted 6 “islands” resulting from ICWW construction

# USACE Role

## ➤ Ecosystem Restoration Report

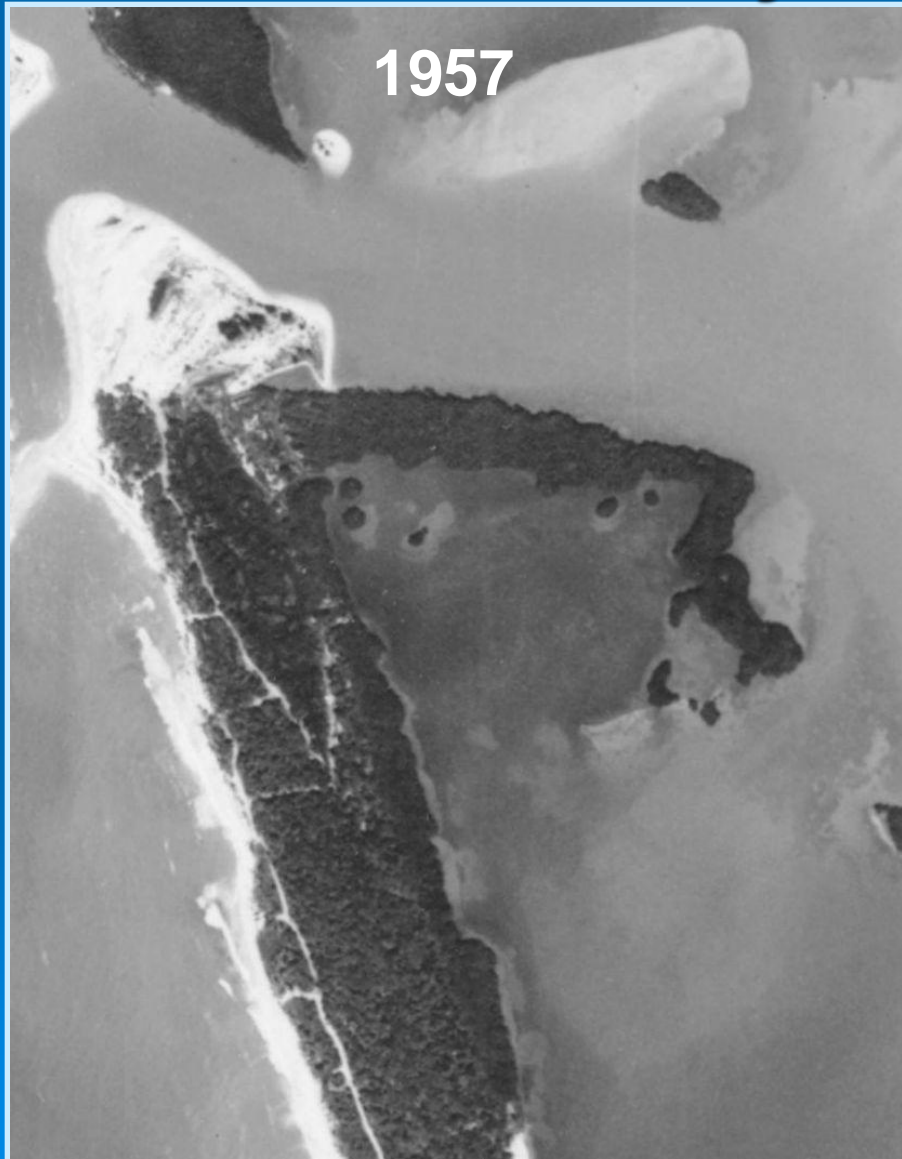
- Goal – ...to ecologically restore the degraded habitat by removing exotic vegetation, excavating tidal channels, and planting native vegetation.
- Objective - ...restore the degraded ecosystem structure, function, and dynamic processes...and recommend the most efficient, reliable, and cost effective alternatives for restoring...



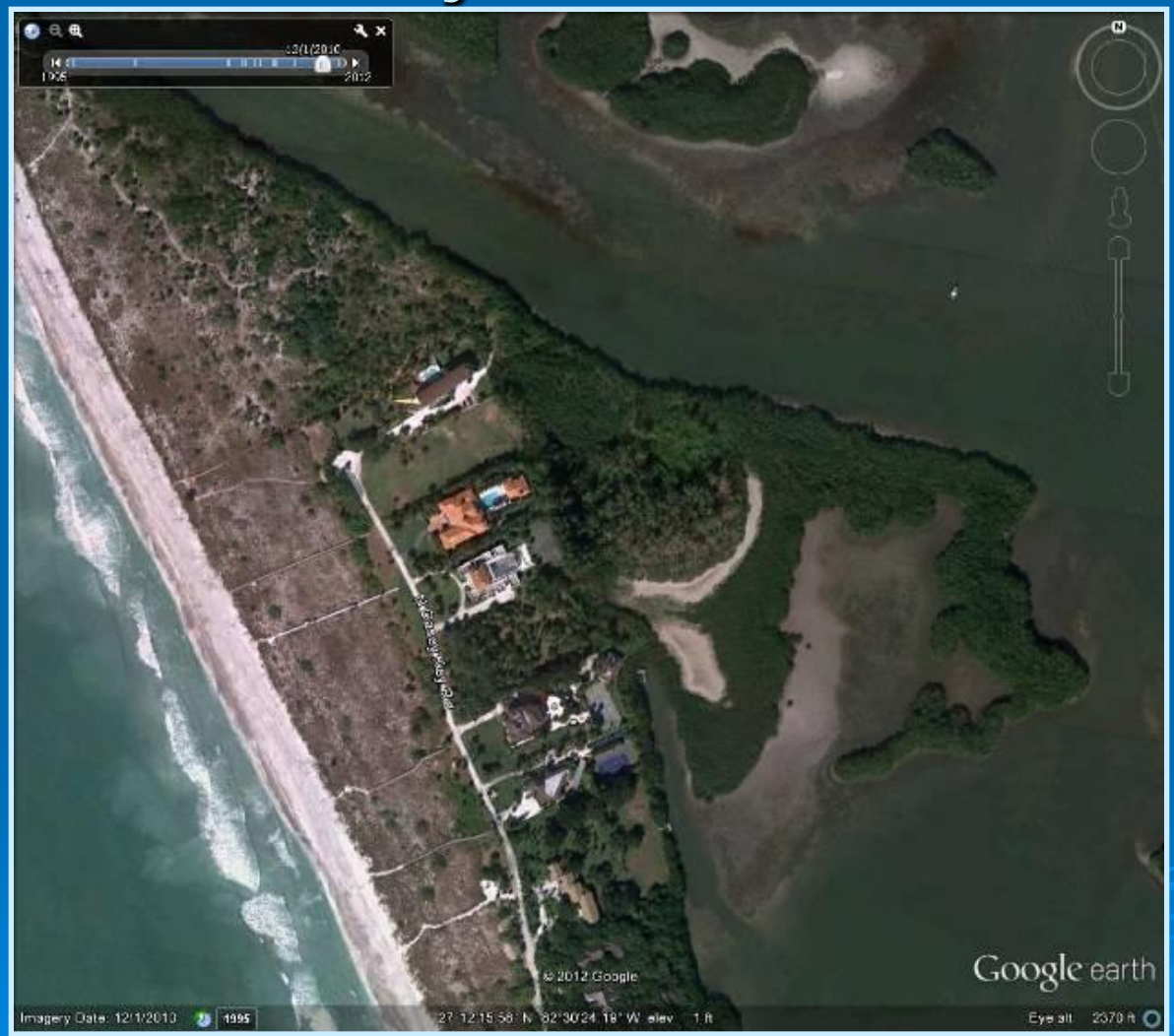
# Project Funding

- **1135 Funding for Construction did not get appropriated**
- **Sarasota County & the Sarasota Bay National Estuary Program partnered for 2 of the islands with funding from:**
  - **Southwest Florida Water Management District**
    - **Surface Water Improvement and Management (SWIM) Program**
  - **West Coast Inland Navigation District**
  - **Jacksonville Community Foundation**

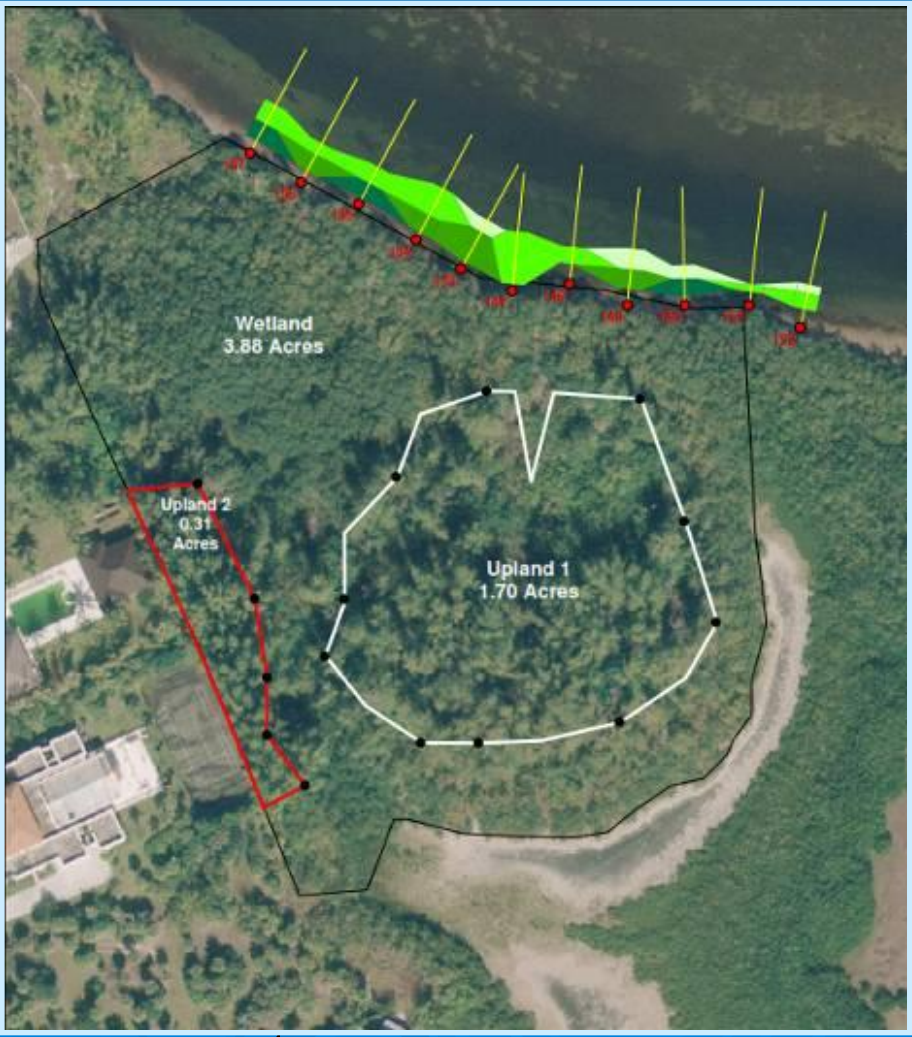
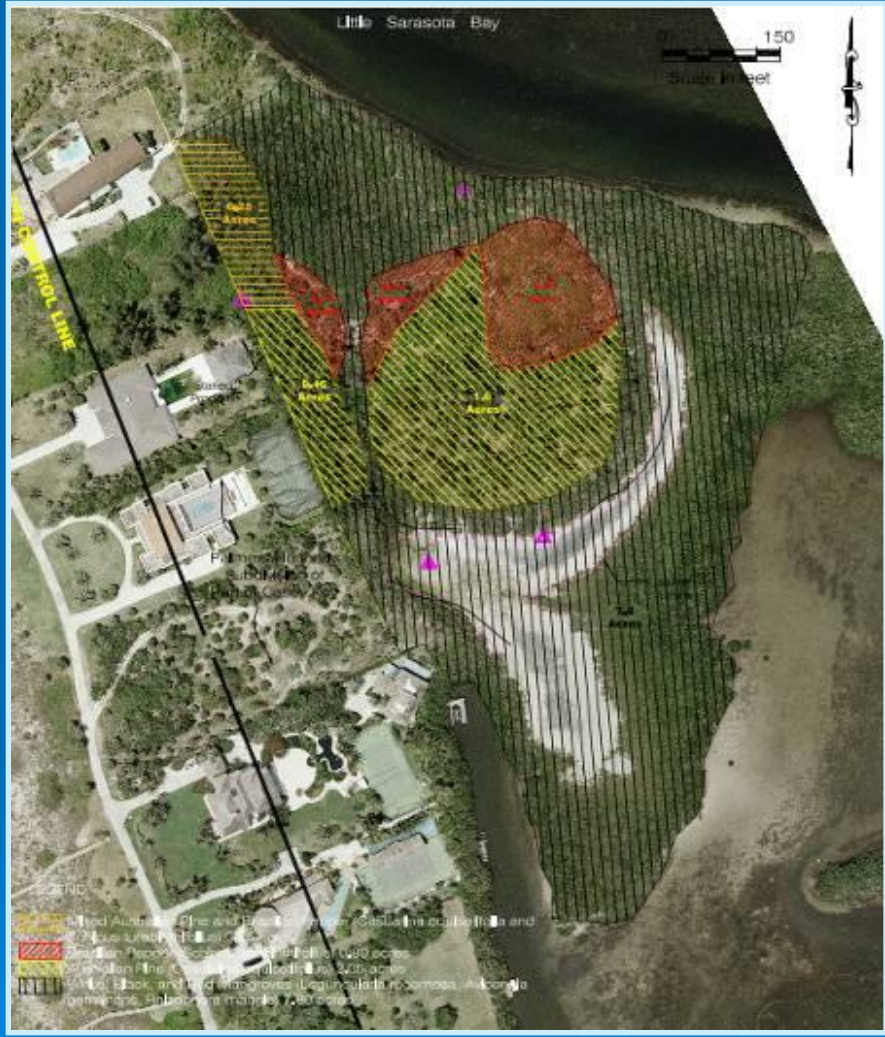
# Pre-Project Condition



# Pre-Project Condition



# Pre-Project Condition



# Pre-Project Condition



**Australian Pine Canopy**

**Brazilian Pepper Understory**



# Conceptual Designs

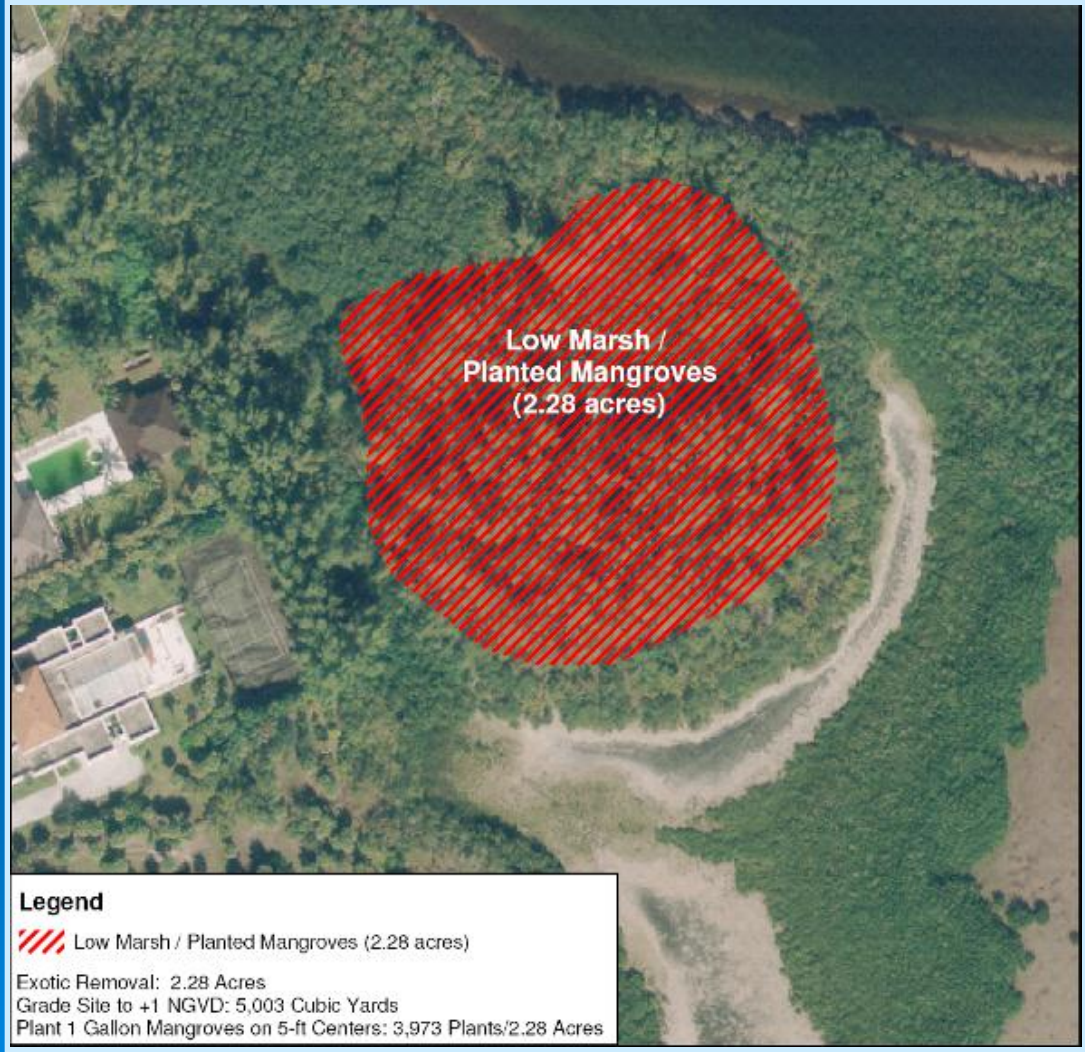
## ➤ Three Concepts

- Concept 1 – Grade down, Plant Mangroves
- Concept 2 – Grade down, Excavate lagoon, Plant Mangroves
- Concept 3 – Grade down, Excavate lagoon, Install culvert, Plant Mangroves

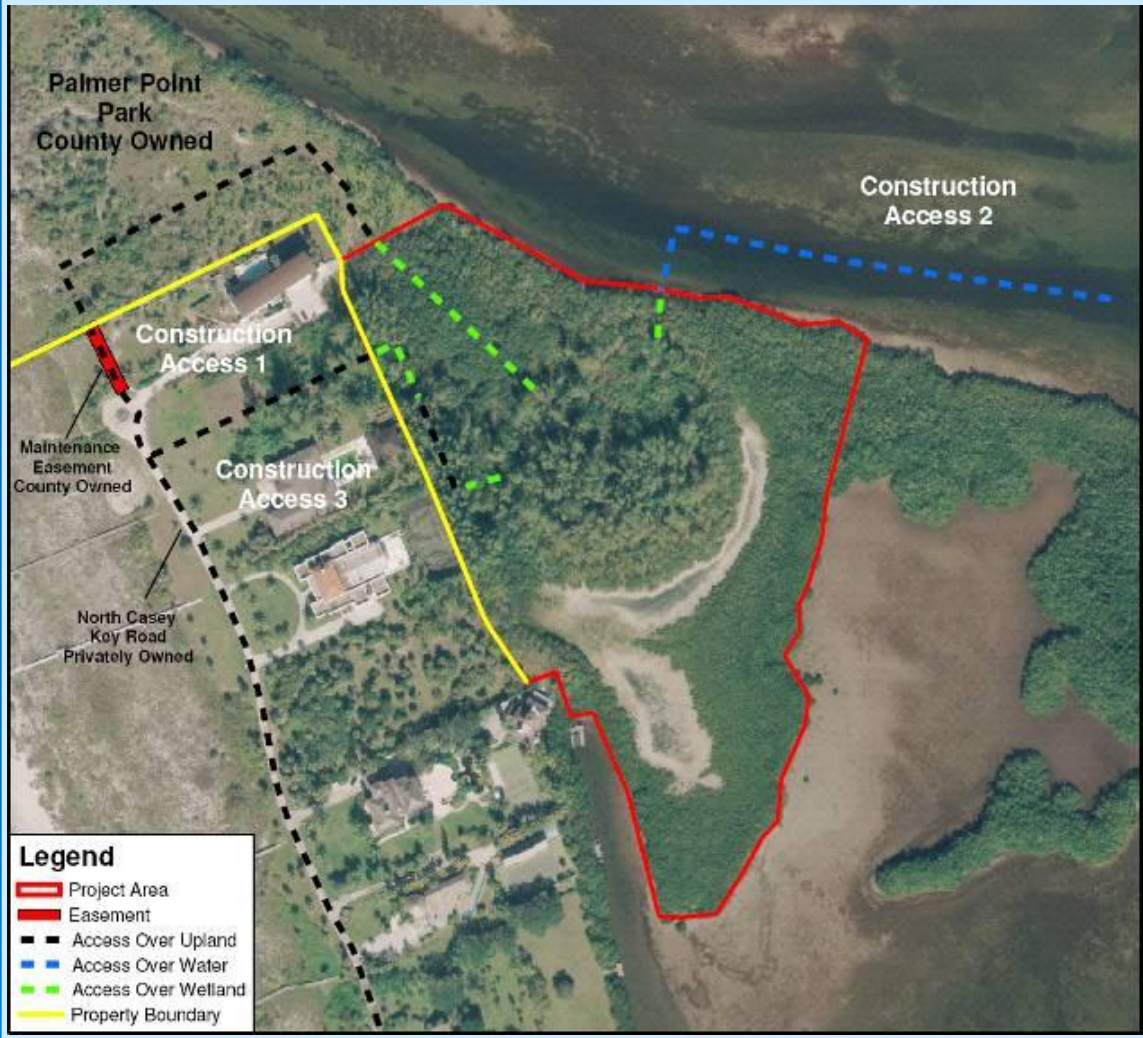
## ➤ Concepts consistent with original 1135 Report Goals:

- Exotic Removal
- Tidal Channel Excavation
- Planting Native Vegetation

# Conceptual Design 1

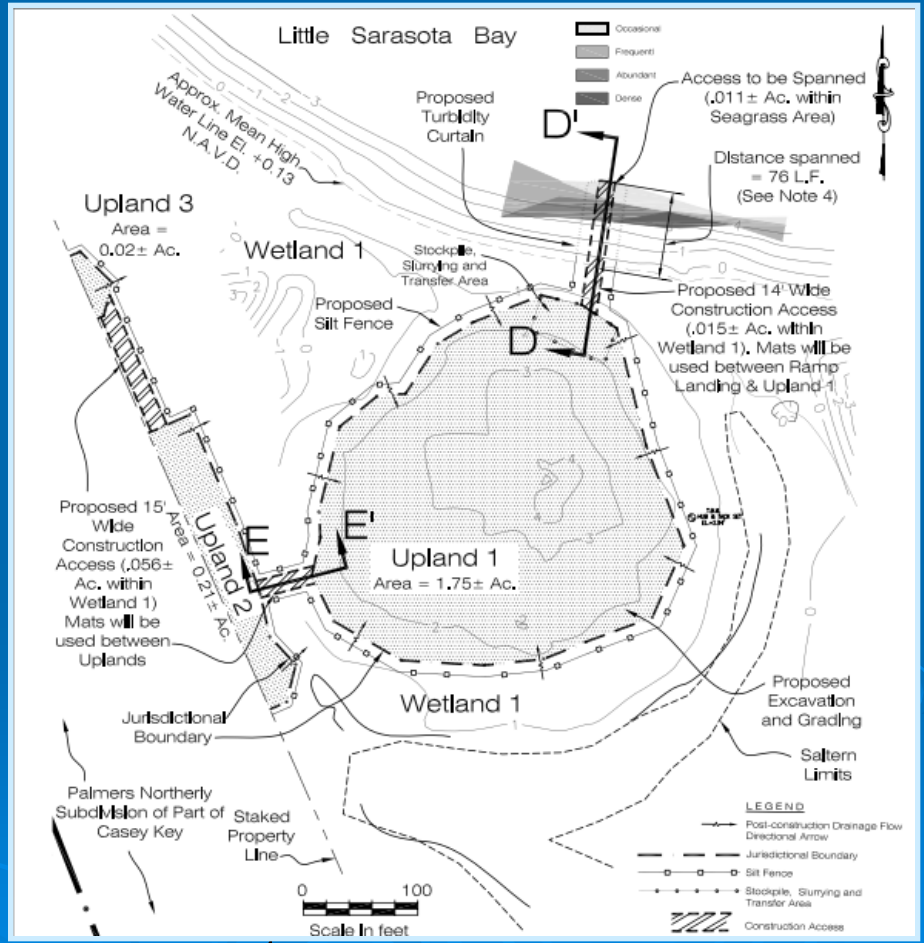


# Construction Access

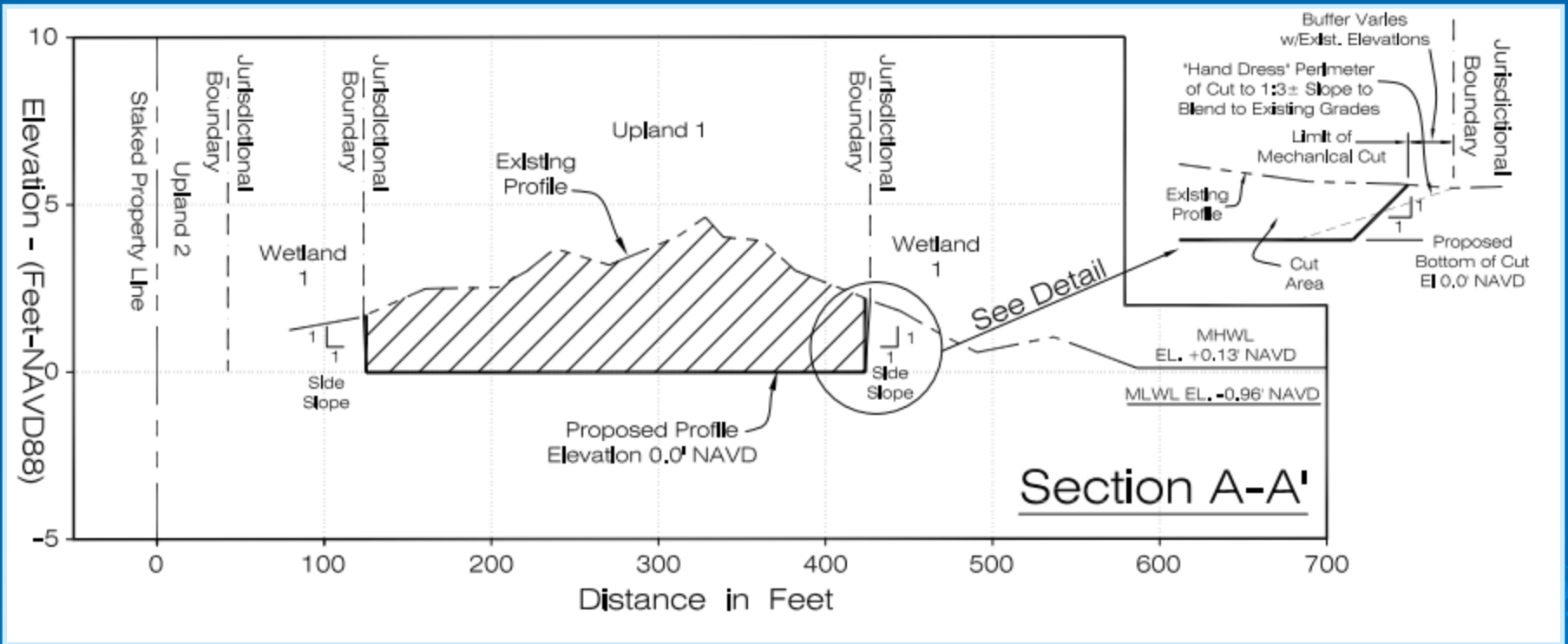




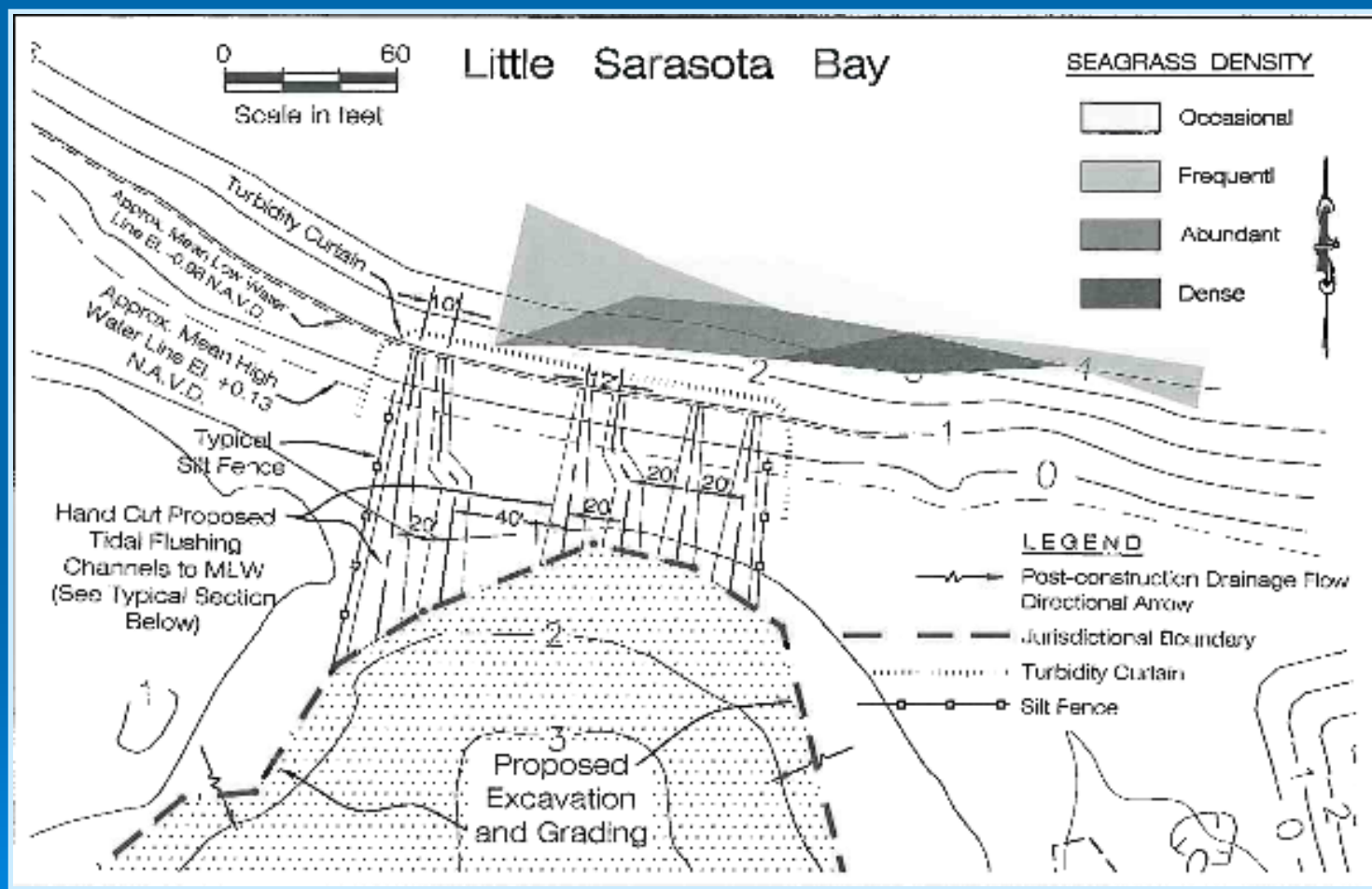
# Permitting: Wetland Minimization Measures



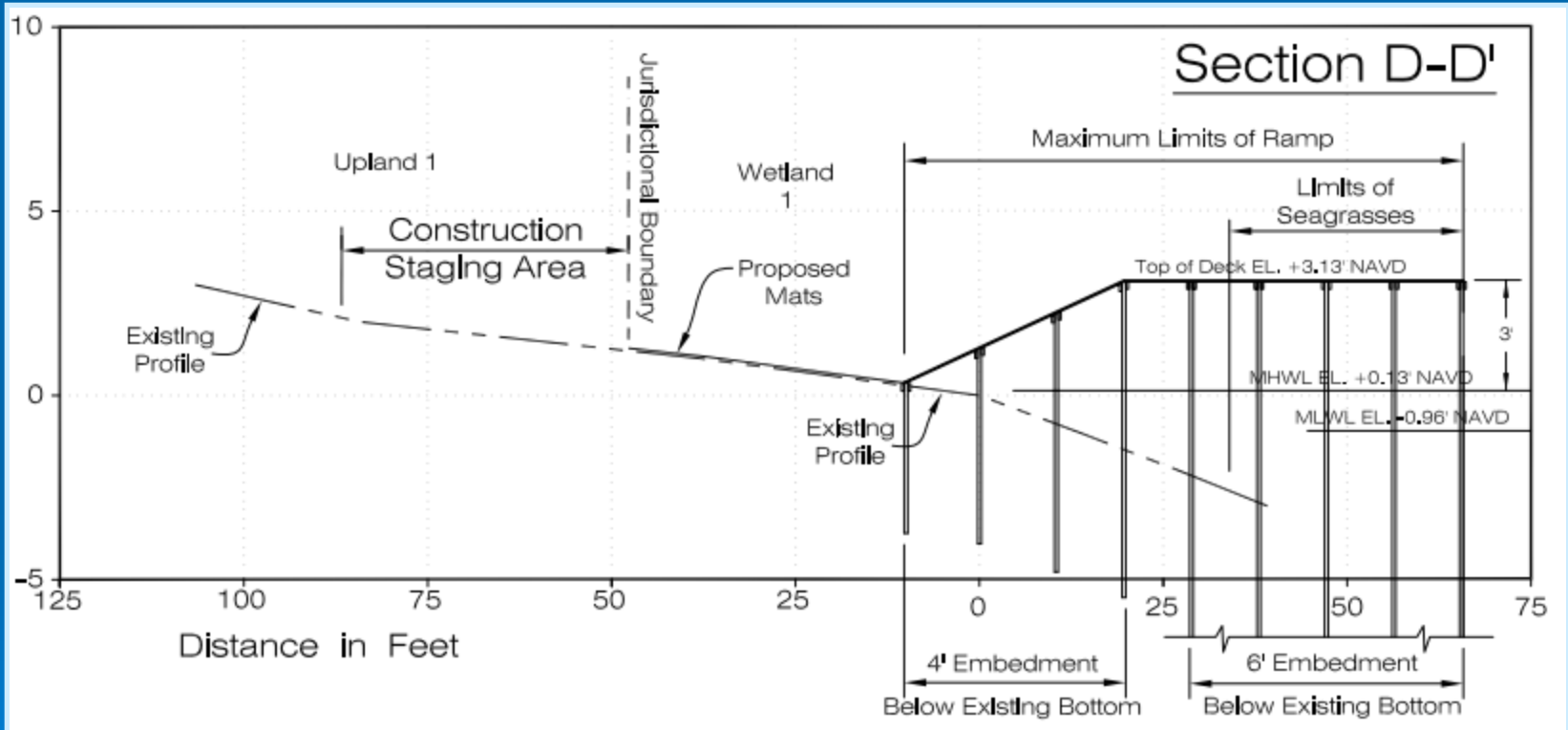
# Permitting: Wetland Minimization Measures



# Permitting: Mangrove Minimization Measures



# Permitted Project Seagrass Minimization Measures



# Mid-Construction



# Mid-Construction



# Mid-Construction



Thank You!  
Questions?

