



Biotic Resistance in Weed Biological Control

MELISSA C. SMITH, ELLEN C. LAKE, CAREY R. MINTEER, MIN
RAYAMAHJI, GREG WHEELER, PHILIP TIPPING, F. ALLEN DRAY

GEER 2017, APRIL 18

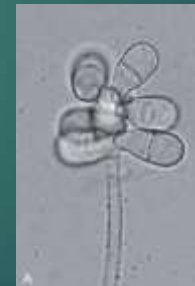
Biotic Resistance



Competition



Predation



Pathogens &
Parasites

Elton (1958)

Biological Control

- ▶ >50% of arthropods released for weed biological control are suppressed by native species
- ▶ Why do some biological control introductions fail??
 - ▶ Agent fails to establish at all
 - ▶ Populations establish, but target weed does not decline
 - ▶ Local failure
 - ▶ Global failure

Biotic Resistance

- ▶ For Biological Control?
 - ▶ Enemy release
 - ▶ Competitor release
 - ▶ Allee effects



Biotic Resistance

- ▶ For Biological Control?
 - ▶ Enemy release
 - ▶ Competitor release
 - ▶ Allee effects
 - ▶ Relation to a pest spp.



Biological Control Failures: Examples

▶ *Austromusotima camptozonale*



- Pyralid moth introduced to control *Lygodium microphyllum*
- Larvae and pupae attacked by native parasitoids and predators (Boughton & Pemberton 2008)
- < 2 generations in the field

Biological Control Failures: Examples

▶ *Spodoptera pectinicornis*



- Noctuid moth introduced to control *Pistia stratiotes* (Water lettuce)
- Larvae and pupae attacked by native birds and fire ants (Dray et al. 2001)

Biological control conflicts

- ▶ Insect Biological control vs. Weed Biological control



Trichogramma exiguum



European corn borer

Biological control conflicts

- ▶ Insect Biological control vs. Weed Biological control



Trichogramma exiguum



European corn borer

Biological control conflicts

- ▶ Insect Biological control vs. Weed Biological control



Trichogramma exiguum



Neomusotima conspurcatalis

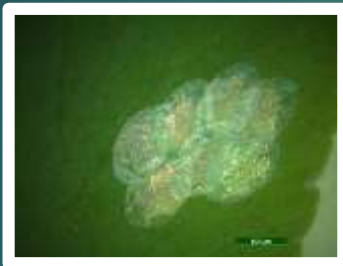
What can be done?

- ▶ Susceptible biocontrol agents rapidly accumulate native parasitoids (Paynter et al. 2010)
- ▶ Biological control agents in proximity to analogs
- ▶ Example: *Neomusotima conspurcatalis*



Boughton et al.
2012

Cotesia
sp.



Megamelus scutellaris



Megamelus davisii



Kalopolynema ema



What can be done?

- ▶ Actively search out insects without native analogs in close proximity
- ▶ Example: *Oxyops vitiosa* (*Melaleuca quinquenervia*)



What can be done?

- ▶ Sometimes you don't have any other options:
 - ▶ *Lygodium microphyllum*
 - ▶ *Rhodomyrtus tomentosa*
- ▶ Parasitoid accumulation in the native range doesn't predict parasitoid susceptibility in the adventive range
- ▶ Parasitoid species assemblages are often poorly studied – difficult to predict
- ▶ **Study the native insect communities in the invaded communities**
- ▶ **Coordinate between insect biological control and weed biological control**

Discussion and Questions?

- ▶ References:
- ▶ Goeden, R.D. and S.M. Louda. 1976. Biotic interference with insects imported for weed control. *Ann. Rev. Entomology*.
- ▶ Paynter, Q. et al. 2010. Predicting parasitoid accumulation on biological control agents of weeds. *J. Appl. Ecol.*
- ▶ Boughton, A.J. and R.W. Pemberton. 2008. Efforts to establish a foliage-feeding moth, *Austromusotima camptozonale*, against *Lygodium microphyllum* in Florida.... *Biological Control*
- ▶ THANK YOU:
 - ▶ Dr. Ellen Lake
 - ▶ Dr. F. Allen Dray
 - ▶ Dr. Carey Minter