

Chesapeake Bay Climate Adaptation



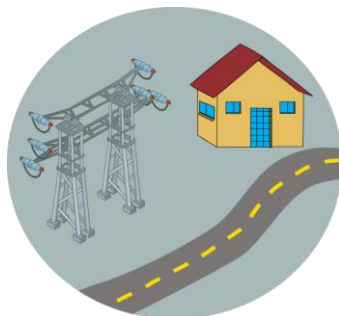
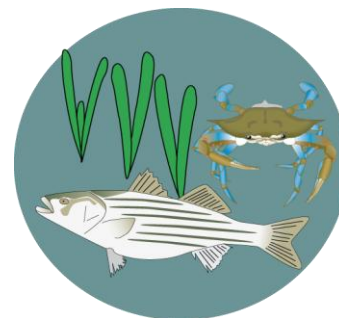
Climate Change & the Bay

A 2100 Snapshot

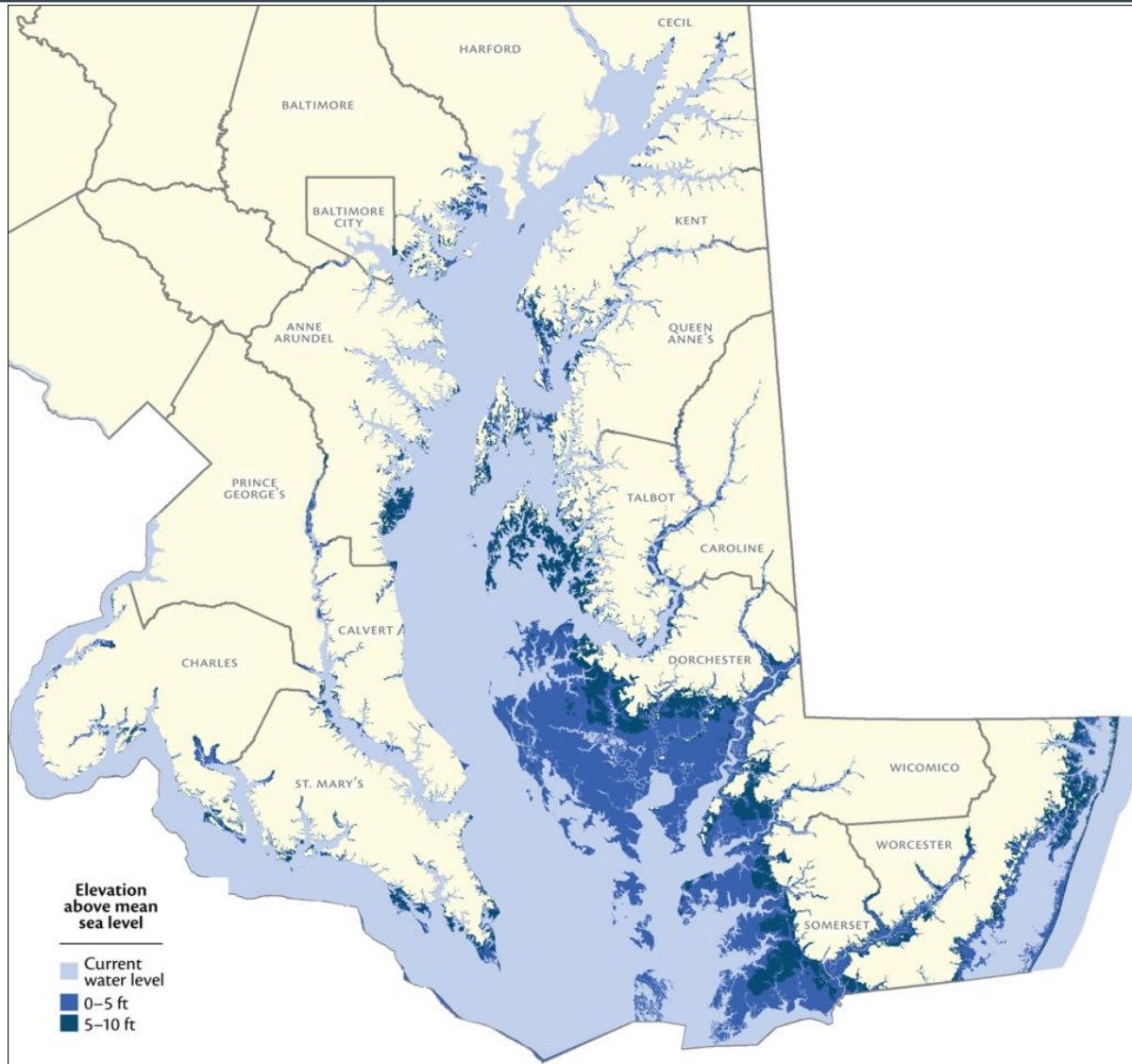
- ✓ Sea Level Rise: + 3- 4 feet (1 to 1.5 meters)
 - ✓ Temperature: + 4 - 7 degrees F
 - ✓ Annual Precipitation: -10% to +20%
 - ✓ Spring Runoff: Higher
 - ✓ Summer Runoff: Lower

*Global Climate Change = Real Consequences
for the Chesapeake and its Resources*

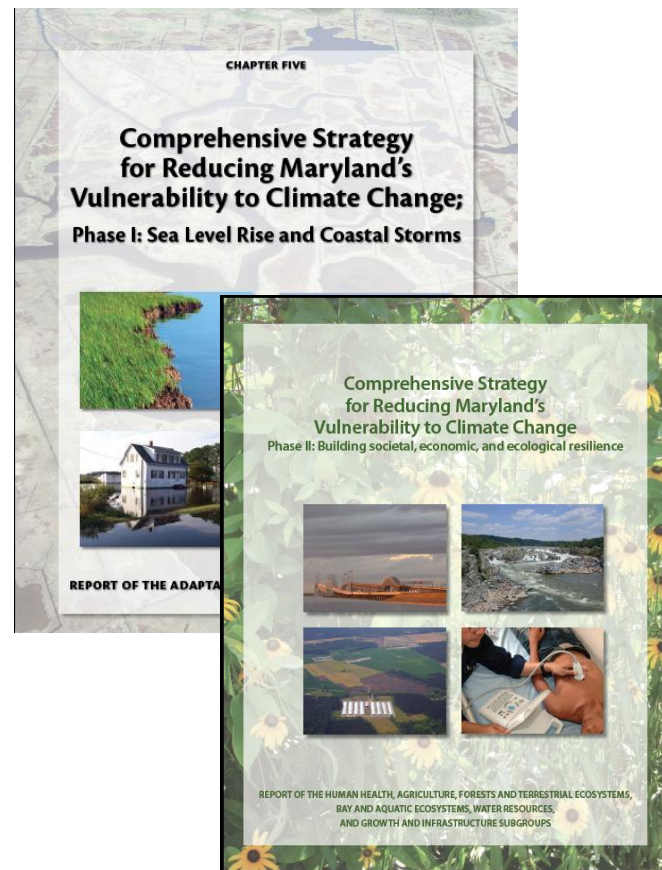
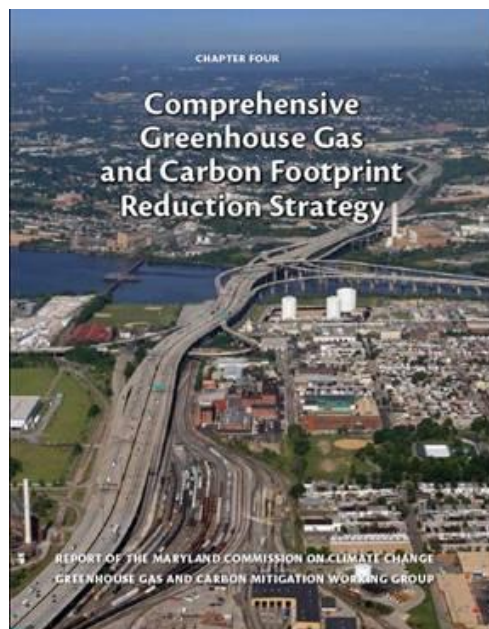
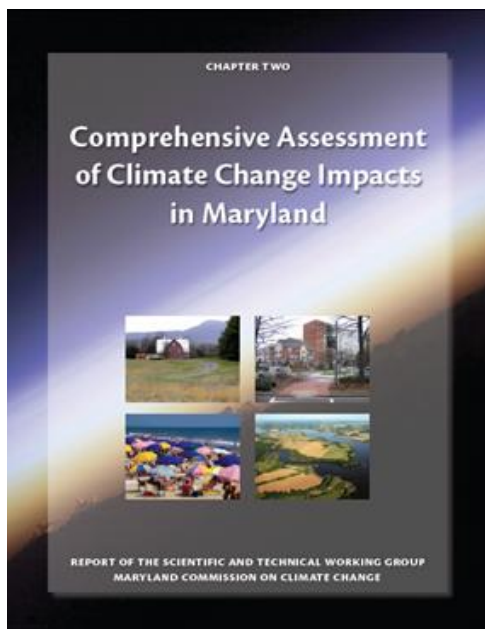
All sectors of our economy, society and environment will be impacted



Largest Threat : Vulnerability to Sea Level Rise



Maryland Climate Action Plan





Zoë P. Johnson

zjohnson@dnr.state.md.us

(410) 260-8741

<http://www.dnr.state.md.us/climatechange>

