



PORT NOLA

THE PORT OF NEW ORLEANS

Gary LaGrange
President & CEO
Port of New Orleans
glagrange@portno.com

WORLD'S LARGEST PORT SYSTEM



- 5 deepwater port authorities along 290-mile stretch of River.
- More than 12,000 vessel traverses on Lower Mississippi River
- 500 million tons of cargo annually on the LMR
- 60 percent of the nation's grain for export.
- 20 percent of the nation's coal and petroleum products.



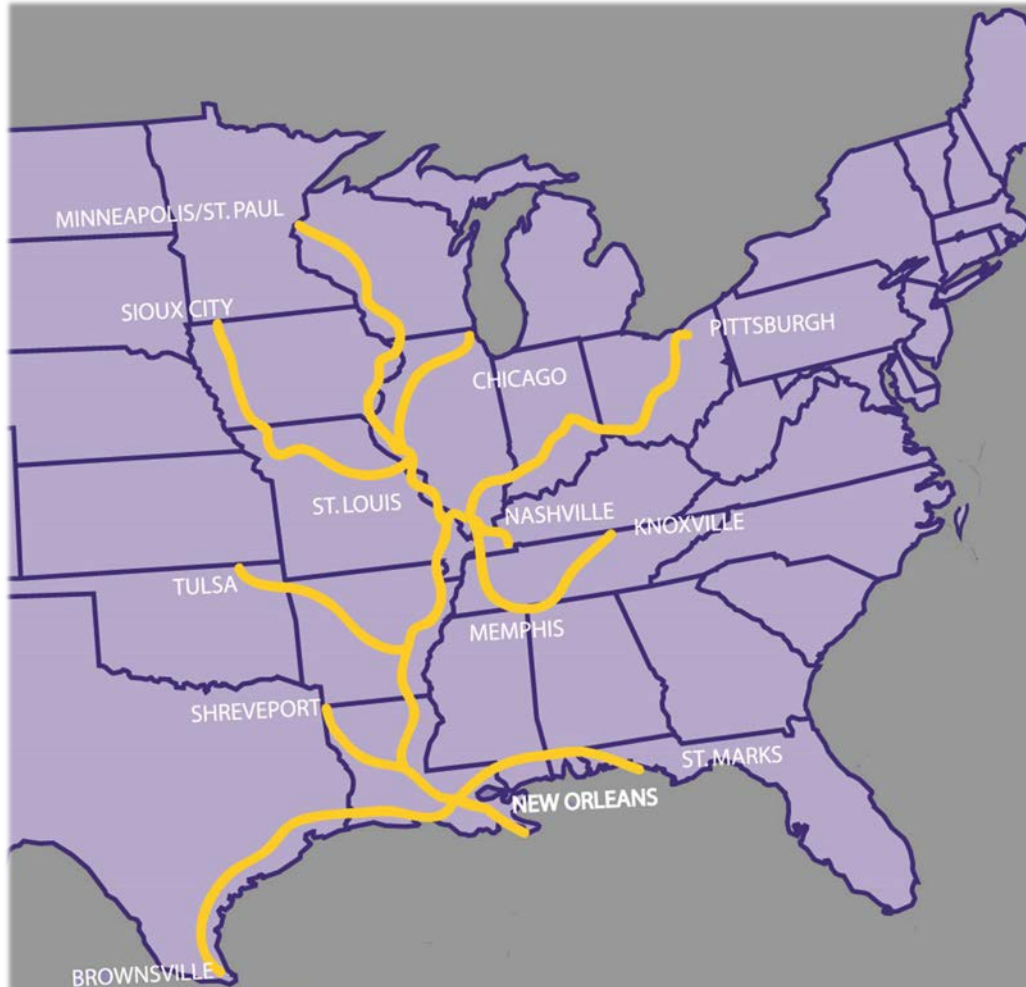
SUPERIOR CONNECTIVITY



50 Ocean Carriers, 6
Rail Lines,
16 Barge Lines, 75
Truck Lines



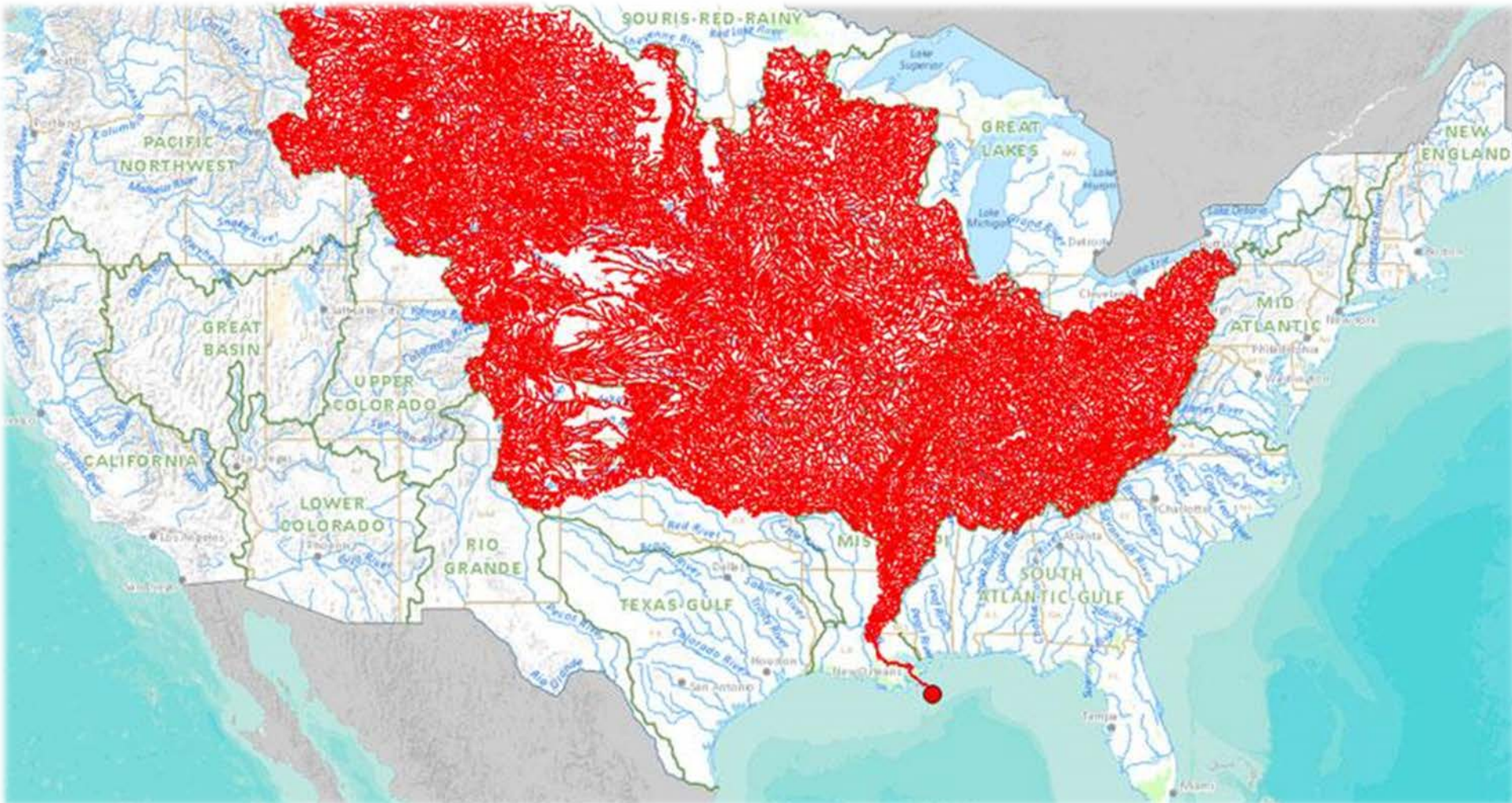
INLAND WATERWAY SYSTEM



- A 14,500-mile inland waterway system
- Reaches 31 states.
- Servicing 279,099,369 people in U.S.
- 500,000 barge movements



Mississippi River & Tributaries



Source: USGS National Map

MISSISSIPPI RIVER DEEPENING



Deepening the Mississippi River to 50 Feet:

- \$11.49 Billion U.S. Production Annually
- Generate 17,000 New Jobs
- \$849 Million Increased Income Annually
- \$89.40 to \$1. Benefit/Cost Ratio
- Increase Competitiveness of U.S. Exporters

Source: Tim Ryan 2013 Study



Panama Canal could generate 3.5- 5 Million TEUs for Gulf ports by 2028

