

OVERVIEW OF THE NEVADA CONSERVATION CREDIT SYSTEM

A Community on Ecosystem Services

Technology at Work in the Sagebrush Ecosystem

Washington D.C.

December 4, 2018

Kelly McGowan

Program Manager



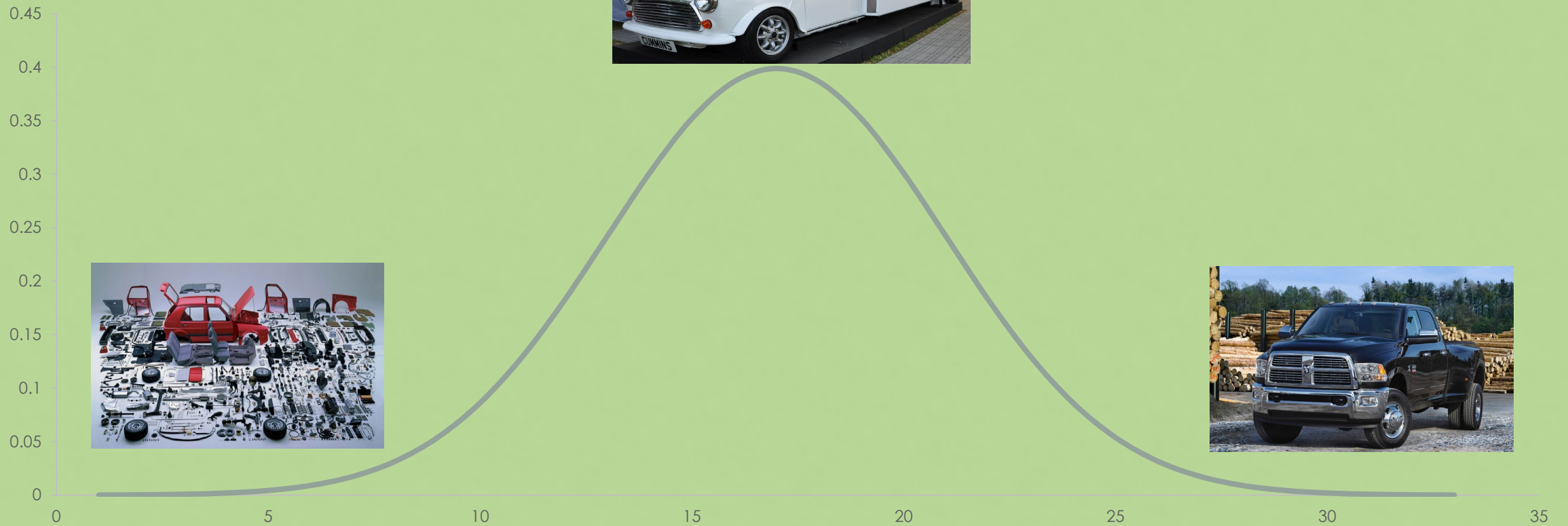
CONSERVATION CREDIT SYSTEM GOAL

To offset impacts from anthropogenic disturbances through enhancement and protection that results in a net benefit for greater sage-grouse habitats in the state of Nevada

CONSERVATION CREDIT SYSTEM OBJECTIVES

- Achieve high-quality mitigation, and incentivize avoidance and minimization of impacts to high-quality habitat
- Meet high bar of additionality and durability for mitigation projects
- Ensure net conservation gain while addressing risk of project failure
- Get conservation on the ground quickly and increase mitigation investments for habitat improvements and protection
- Understand the net change to habitat across a large landscape over time

STATUS:



LESSONS LEARNED

How to Generate Credits

The steps below describe the process for generating credits through the Nevada Conservation Credit System. Use the links below to download the form(s) necessary to complete each step. For questions regarding this process, email [Kelly McGowan](mailto:kmcgowan@sagebrushhcco.nv.gov).

01

Submit Validation Checklist

Complete the checklist and email to kmcgowan@sagebrushhcco.nv.gov. The checklist helps the SETT confirm that the project will meet minimum eligibility requirements.



The SETT will review the checklist and, if minimum eligibility requirements are met, issue a **Notice of Validation**.

02

Submit Draft Management Plan

Complete sections I through III of the Management Plan and email to kmcgowan@sagebrushhcco.nv.gov. The Management Plan allows the SETT to provide guidance on project design before investing in habitat assessment. The remainder of the Management Plan will be completed after the SETT conducts a habitat assessment using the [Credit System User's Guide](#) and the [Credit Project Calculator](#).



The SETT will review the Management Plan and complete a desktop analysis of the proposed project using the [Credit System User's Guide](#) and the [Credit Project Calculator](#). The desktop analysis provides information on the potential habitat quality of the project area. The SETT will share the results of the desktop analysis and provide comments on the draft Management Plan, including recommendations related to restoration, enhancement or long-term stewardship actions. The SETT will meet with the Credit Developer to discuss if needed.

03

Complete Habitat Assessment

After addressing any comments provided by the SETT on the draft Management Plan, contact Kelly McGowan at kmcgowan@sagebrushhcco.nv.gov to schedule a field analysis for the project area.



The SETT, or certified verifier, will complete the field analysis using the [Credit System User's Guide](#) and the [Credit Project Calculator](#). The SETT or certified verifier must complete the field analysis even if the Credit Developer has already done so, in order for credits to be officially released.

04

Finalize Management Plan and Sign Participant Contract

Working with the SETT, complete sections IV through VI of the Management Plan and fill in the Participant Contract. Once all parties agree to the terms in the Management Plan and Participant Contract, the documents are signed and credits are released and ready for sale.



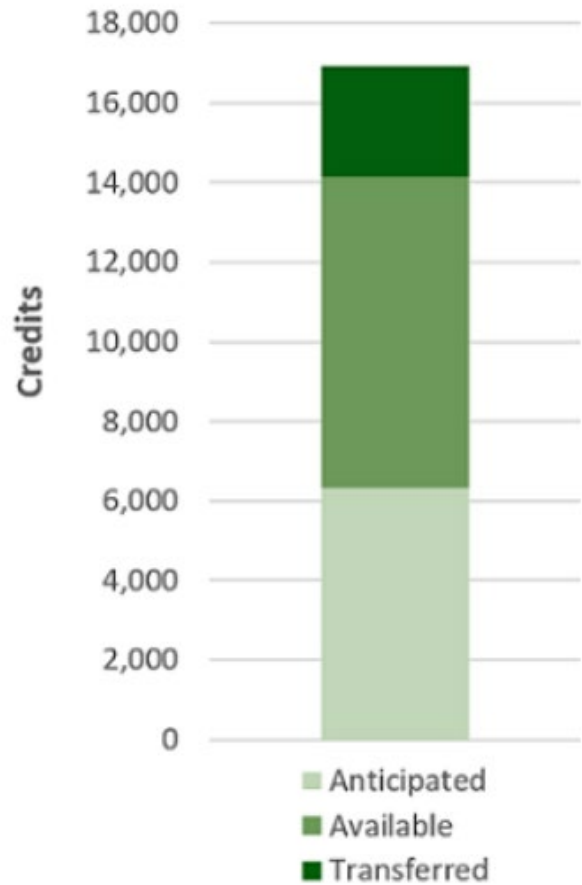
The SETT will set up an account for the Credit Developer and deposit all released credits into the account. Additional credit releases will be deposited into the Credit Developer's account once performance measures defined in the Management Plan are met.

05

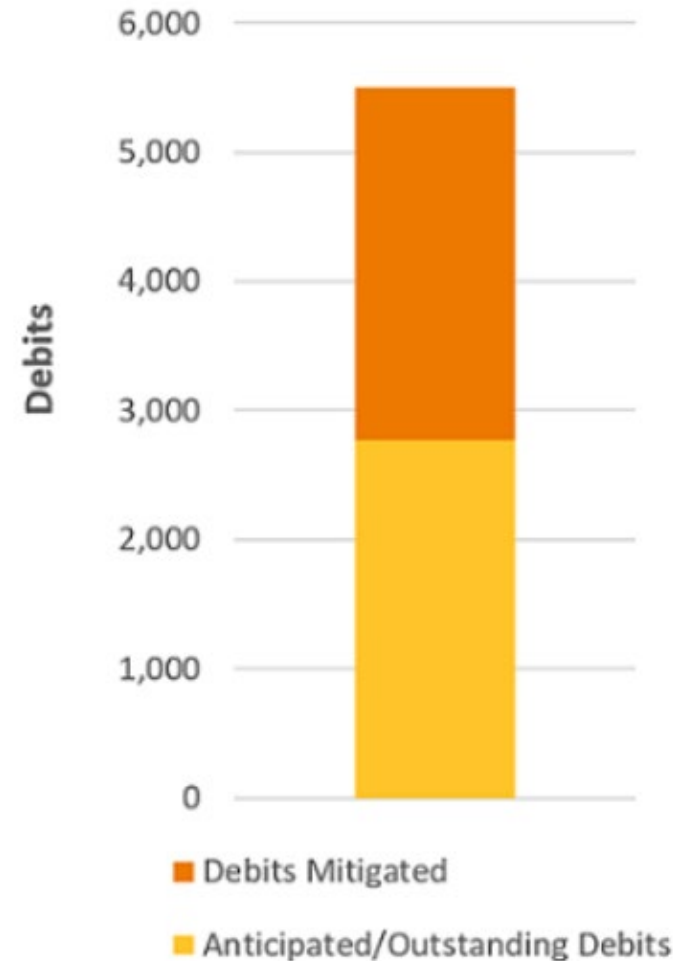
Sell Credits!

The Credit Developer may work with the SETT, or independently, to identify a credit buyer. A [Credit Purchase Agreement](#) must be signed by both parties and a [Credit Transfer Form](#) must be submitted to Kelly McGowan (kmcgowan@sagebrushhcco.nv.gov) to sell credits.

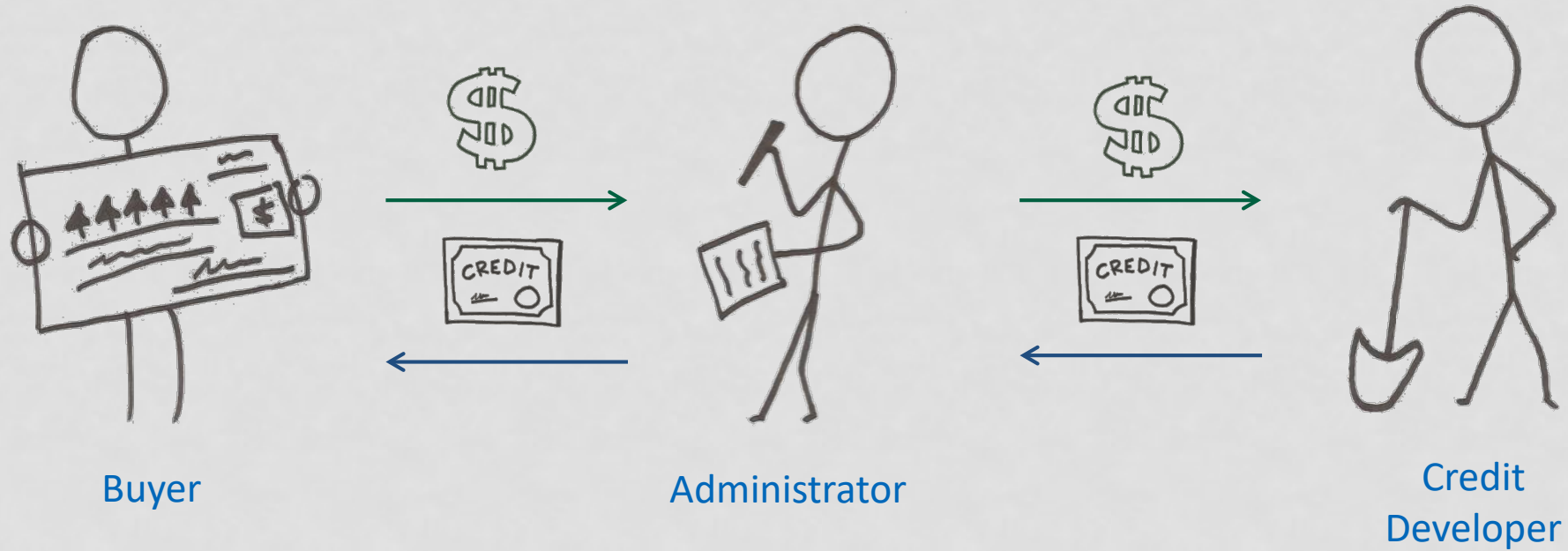
TRANSACTIONS COMPLETED & PIPELINE AS OF DECEMBER 2018



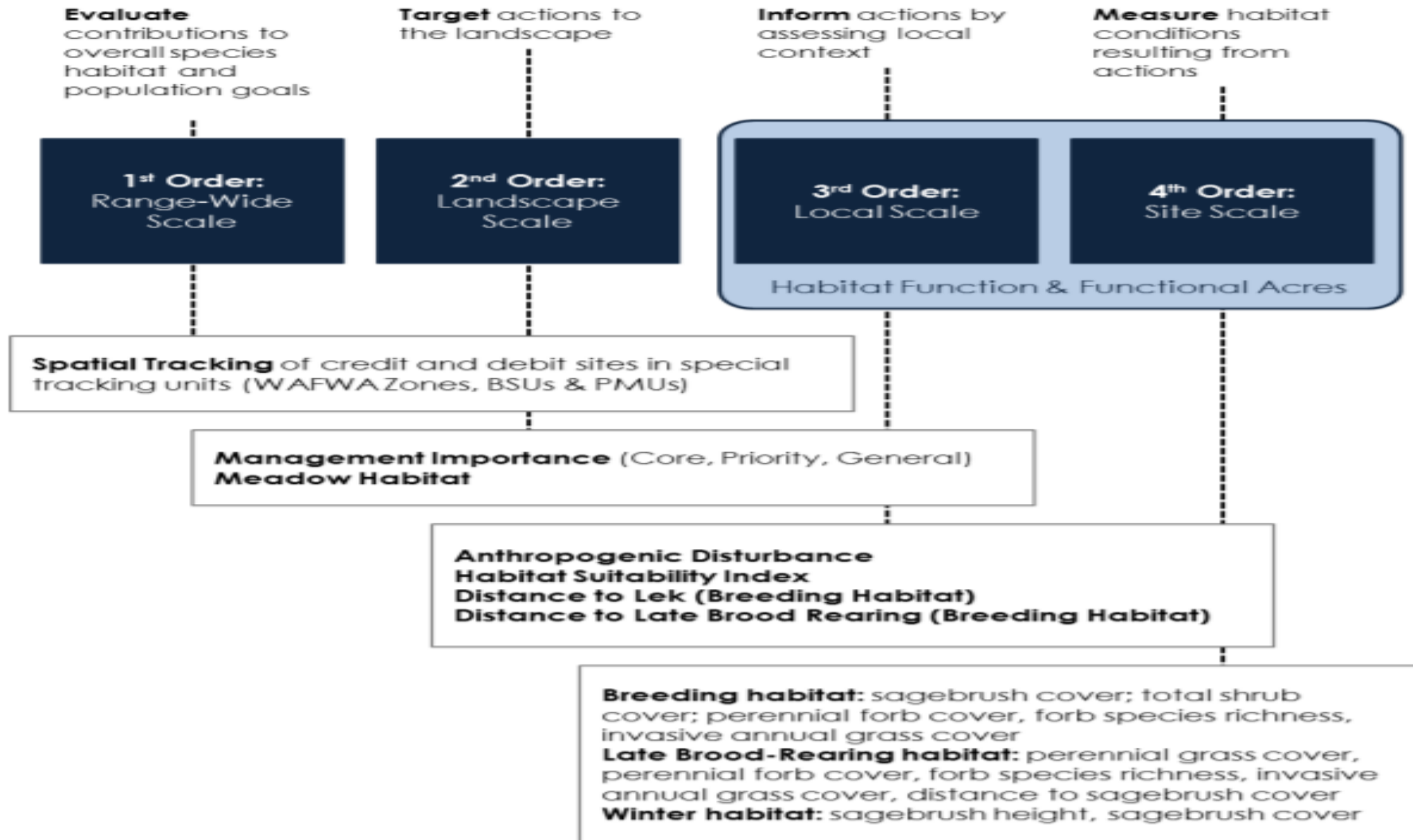
**Anticipated credits have been roughly estimated.*



TRANSACTION PROCESS



HABITAT QUANTIFICATION FRAMEWORK



LANDSCAPE & LOCAL SCALE PARAMETERS

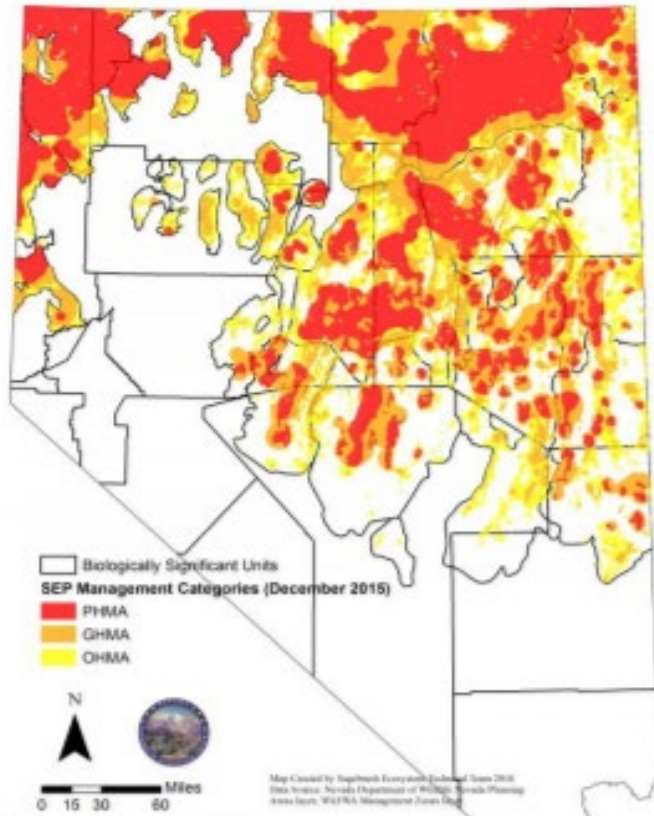


Figure 5. Sagebrush Ecosystem Program's Management Categories Map used to determine habitat importance at the landscape scale

Spring Habitat Suitability Attribute Measurement

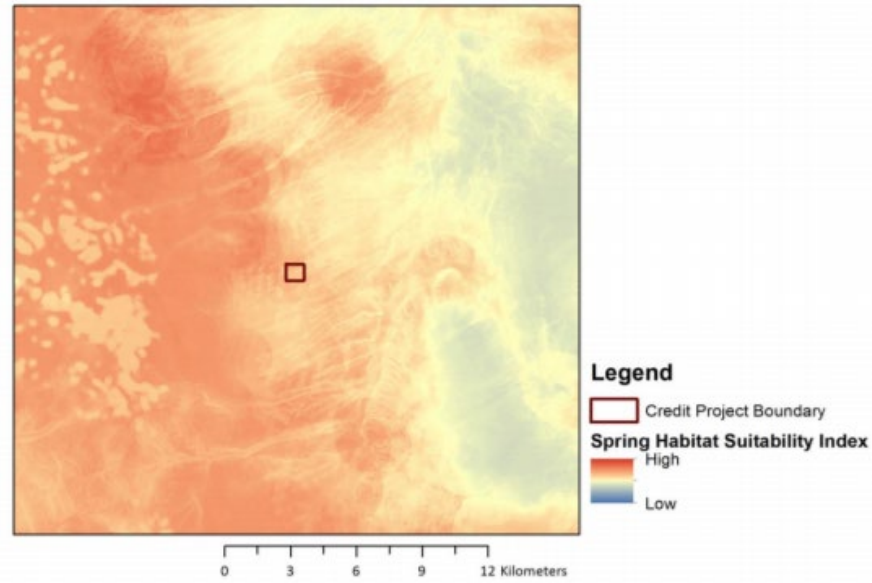


Figure 9. Habitat suitability related to the Spring HSI in the area surrounding an example credit project site

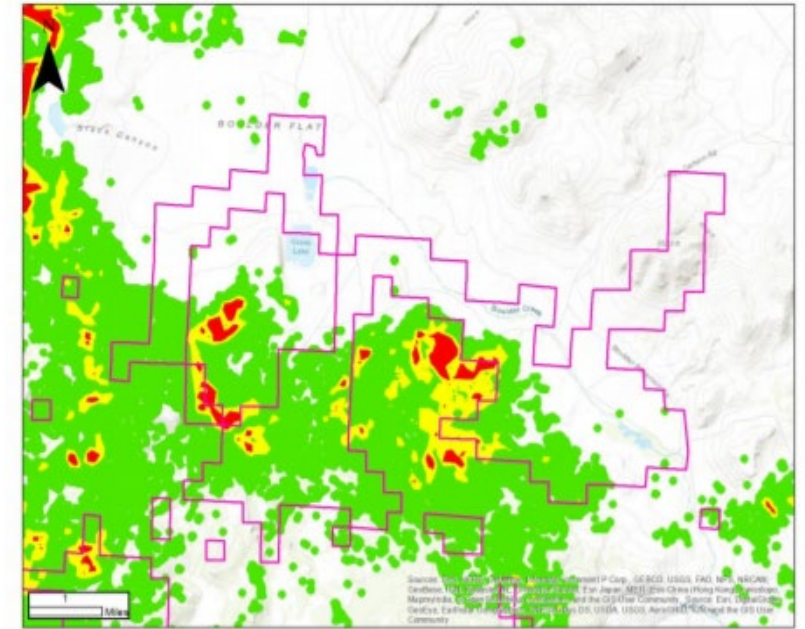


Figure 6. Sagebrush Ecosystem Program's map used to provide initial determination of areas of conifer cover.

INDIRECT EFFECTS

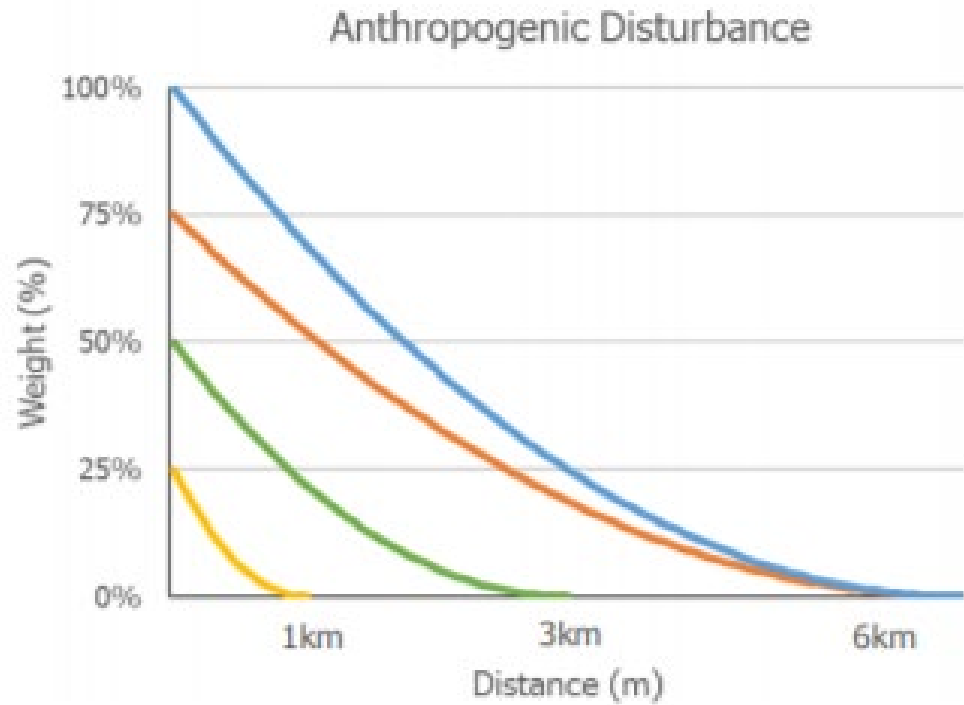


Figure7: Example distance-decay curves with the y-intercept the weight and the x-intercept the distance associated with the anthropogenic disturbances.

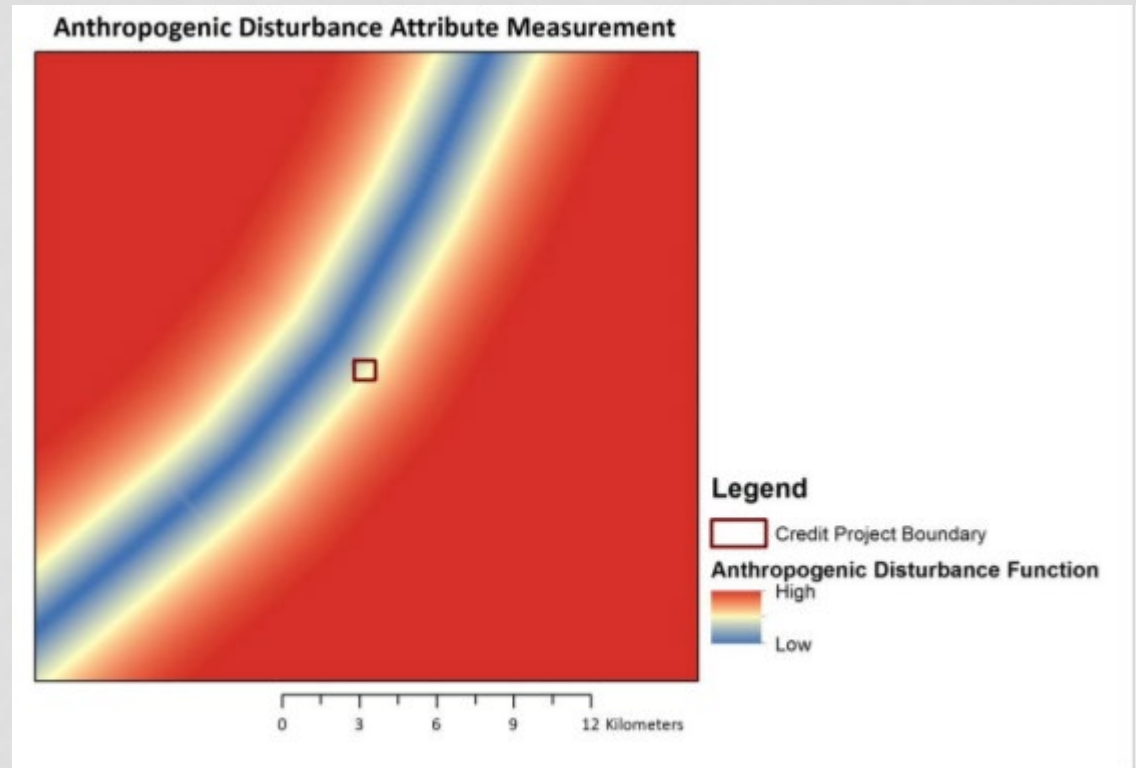
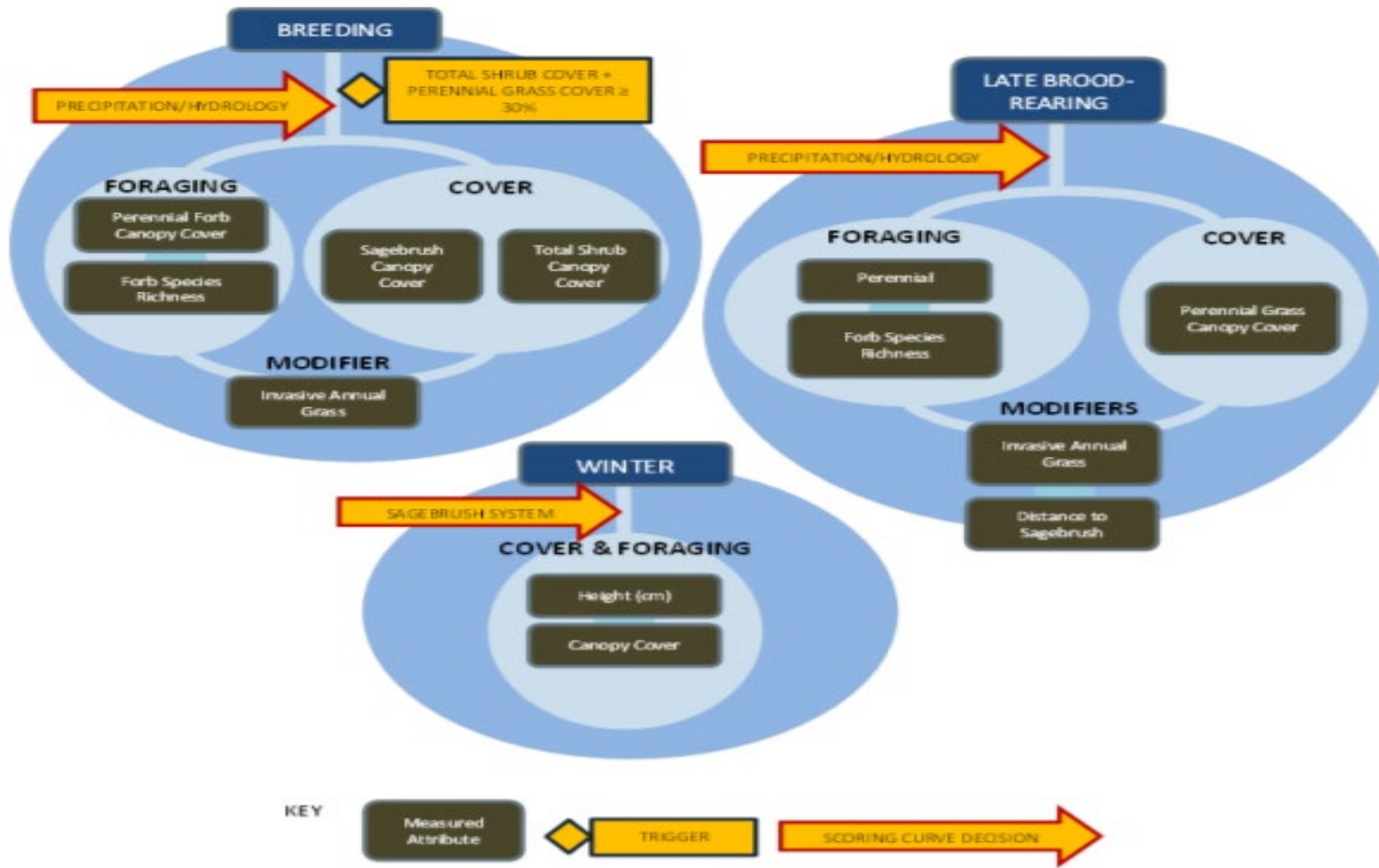


Figure 8: Indirect effects of anthropogenic disturbance on sage-grouse habitat as visualized in a continuous surface raster in the area surrounding an example credit project site

SITE-SCALE PARAMETERS



QUANTIFICATION PROCESS

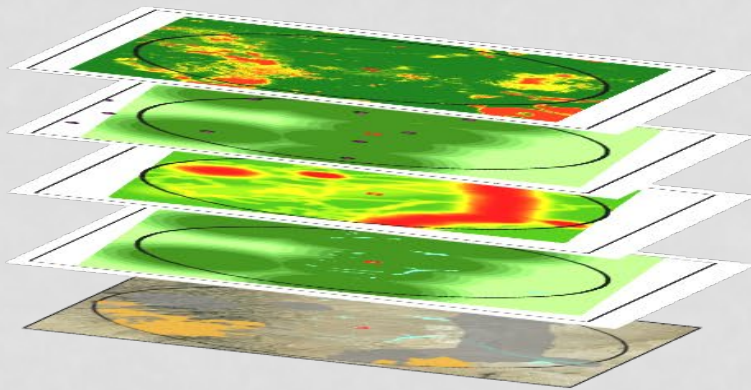
GIS Analysis & Field Data



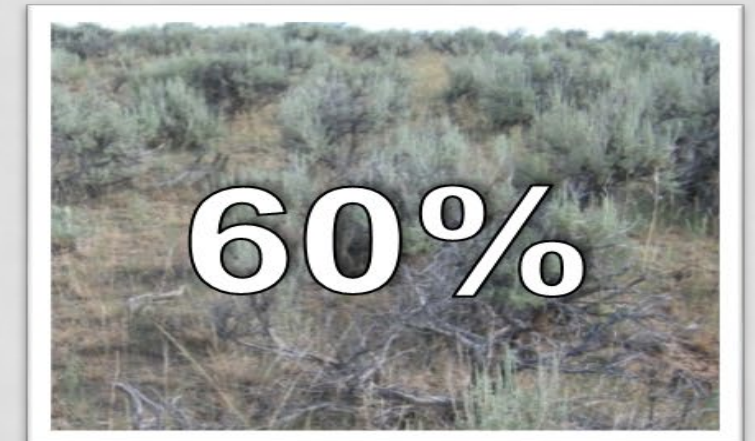
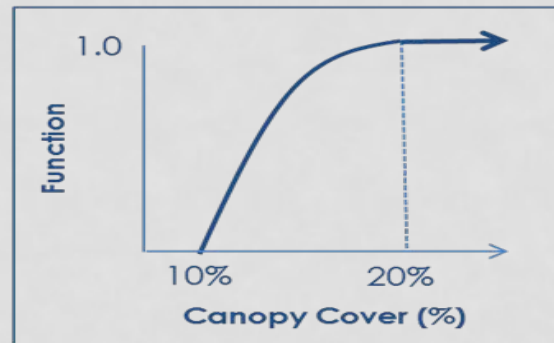
Scoring Approach & Calculator



Habitat Function (Quality) Output



Breeding | Sagebrush Canopy Cover



Reserve Account Summary				
2	Standard Contribution Percent (%)			4%
3	Resistance & Resilience Reserve Account Contribution Percent (%)			1%
4	Competing Land Use Reserve Account Contribution Percent (%)			3%
5	Total Contribution Percent (%)			8%
6				
7				
Credit Estimate Summary				
8	Baseline Area-Weighted Average Habitat Function (%)	19%	Baseline Area-Weighted Average Habitat Function (%)	19%
9	Current Area-Weighted Average Habitat Function (%)	24%	Projected Post-Project Area-Weighted Average Habitat Function (%)	24%
10	Current Functional Acres Above Baseline	2,818.1	Projected Post-Project Functional Acres Above Baseline (f-acres)	2,803.8
11	Current Area-Weighted Average Mitigation Ratio (multiplier)	27.381	Projected Post-Project Area-Weighted Average Mitigation Ratio (multiplier)	27.622
12	Current Credits Generated (credits)	49,174.4	Projected Post-Project Credits Generated (credits)	51,504.6
13	Current Reserve Account Contribution (credits)	3,934.0	Projected Post-Project Reserve Account Contribution (credits)	4,120.4
14	Current Credits for Sale (credits)	45,240.5	Projected Post-Project Credits for Sale (credits)	47,384.3
15				

CURRENT HQT INTERFACES

Full Assessment

- HQT Users Guide
- GIS Toolkit
- Field Sheets
- MS Excel-based Calculator
- MS Excel-based Registry

Site Screening Tool

STATE OF NEVADA CONSERVATION CREDIT SYSTEM

Site Screening Tool for Potential Credit Developers


Are you a landowner or land manager potentially interested in participating in the Nevada Conservation Credit System? The online site screening tool enables potential credit developers to quickly get a snapshot of their property's suitability for participating in the program.

Landowners simply delineate the potential credit site boundaries on a map and answer basic questions about the property. The tool evaluates potential site habitat quality based on important habitat characteristics and proximity to roads, mines, and other man-made features.

Users can run the tool multiple times for different properties, and adjust site boundaries to optimize site quality. Results are private, and no data is saved or transmitted without the user's permission.

For questions about the program or this tool, contact Credit System Program Manager Kelly McGowan at kmcgowan@sagebrushesco.nv.gov.

1. Draw your site boundary



2. Tell us about your site

What percentage of the site has meadows?

Are there powerlines present within 6km (3.8 miles) of the site? Yes No

3. Calculate estimated site quality

Calculate Site Quality

Habitat Quality

High
Low

Management Category

PHMA
OHMA
GHMA

SAGEBRUSH ECOSYSTEM PROGRAM

NEVADA DEPARTMENT OF CONSERVATION AND NATURAL RESOURCES

Bradley Crowell (Director)
Jim Lawrence (Deputy Director)

SAGEBRUSH ECOSYSTEM TECHNICAL TEAM

Kelly McGowan (SEP Program Manager)
Katie Andrlle (Nevada Department of Wildlife)
Dan Huser (Nevada Division of Forestry)
Kathleen Petter (Nevada Division of State Lands)
Ethan Mower (Nevada Department of Agriculture)



SAGEBRUSH ECOSYSTEM COUNCIL

J.J. Goicoechea, Chair (Local Government)
Chris MacKenzie, Vice Chair (Board of Wildlife)
Allen Biaggi (Mining)
Steve Boies (Ranching)
Gerry Emm (Tribal Nations)
Starla Lacy (Energy)
Bevan Lister (Agriculture)
William Molini (Conservation and Environmental)
Sherman Swanson (General Public)

Ex-Officio Members

Bradley Crowell (Nevada Department of Conservation and Natural Resources)
Jerri Conrad (Nevada Department of Agriculture)
Ray Dotson (U.S.D.A. Natural Resources Conservation Service)
Bill Dunkelberger (U.S. Forest Service)
Brian Amme (Bureau of Land Management)
Carolyn Swed (U.S. Fish & Wildlife Service)
Tony Wasley (Nevada Department of Wildlife)

For information please contact:

Kelly McGowan
Program Manager
Nevada Sagebrush Ecosystem Program
kmcgowan@sagebrusheco.nv.gov
(775) 684-8600